

## Additional Rules

**Adopt-a-Trail:** Please inquire at the gatehouse about Wranglers' Adopt-a-Trail Program as you ride and pick up free litter bags.

**Feed:** Only use weed and seed free hay and feed. Pack out any unused feed, hay, and straw to help prevent the introduction of noxious weeds.

Horses are NOT permitted on graveled living space of campsites. Protect our water supply; do NOT tie horses or pile manure near water sources.

**Horse Health Policy:** For the health of your horses, we require all horses to have proof of a current equine infectious anemia (EIA) Coggins test and a current veterinary health certificate in compliance with Kentucky State laws. Refer to [www.kyagr.com](http://www.kyagr.com) or call 502-564-4696 for more information.

**Horse and Wagon Trail Riding:** Review our horse trail map for trail rules.

**Horse Stalls:** Stalls may be reserved or rented upon arrival. Stall cleaning is the responsibility of stall renters and expected daily.

**Horse Wash Stations:** Washing your horse is allowed only at our horse wash stations.

**Manure Removal:** Use manure pits located at the barns or pile manure at edge of campground roads or at end of barns on opposite side from water hydrants so maintenance staff can easily remove it.

**Rodeo:** Plan to come to our annual rodeo in July.

**Stables:** Check out our seasonal riding stables. For guided trail rides call 270-924-2211.

**Stallions:** Keep stallions in a stall or trailer at night.

**Tethering:** Electric fences are NOT permitted. Metal panels may be used within the tethering areas. In primitive overflow areas, panels shall be used within impacted area. Please help avoid unnecessary wear and tear in grassy areas.

**Wagons:** Fluorescent triangles required on all wagons. Front and rear lights required for night rides. No racing or jumping horses allowed.

## Wranglers Camp

5100 Laura Furnace Rd, Golden Pond, KY 42211

N 36° 44' 15.24" | W 87° 59' 56.78"

270-924-2201

Wranglers Campground specializes in providing year-round opportunities for horseback riding and wagon driving enthusiasts. All campers are welcome.

It offers 220 well-defined sites — some with electric/water/sewer, electric/water, electric only, and basic sites. Most sites are capable of handling large motor homes and horse trailers. There are 12 primitive cabins, stalls, and seasonal and group camping available. Purchase ice and firewood at the gatehouse.

Campers have access to modern facilities, 100 miles of horse trails, and an activity court. Farrier/blacksmith services and Outpost camp store are available on weekends from April through November. Check with gatehouse staff for times throughout the season.

Guided trail rides and riding stables are available from April through October.

Annual and daily horse riding permits available for purchase at gatehouse.

All overnight campers with horses must camp at Wranglers Campground.

Reservations by phone, 800-525-7077 or online, [www.landbetweenthe lakes.us/reservations](http://www.landbetweenthe lakes.us/reservations).



[www.landbetweenthe lakes.us](http://www.landbetweenthe lakes.us)  
800-525-7077 | 270-924-2000  
Email: [lblinfo@fs.fed.us](mailto:lblinfo@fs.fed.us)

USDA Forest Service  
Land Between the Lakes  
National Recreation Area  
238 Visitor Center Drive  
Golden Pond, KY 42211

**In case of emergency dial 9-1-1**  
To contact Forest Service Law Enforcement  
Call 877-861-2457

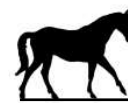
USDA is an equal opportunity employer, provider and lender.

## Wranglers ~Campground~ In Western Kentucky

### Land Between the Lakes National Recreation Area



Horses  
have the right-of-way at  
**Wranglers Campground**

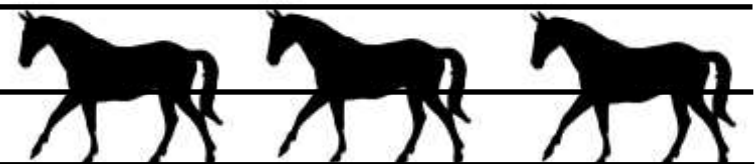


United States  
Department of  
Agriculture

Forest  
Service

## Wranglers Camping Rules

### Land Between the Lakes National Recreation Area



**Find complete camping rules** online at [www.landbetweenthe lakes.us](http://www.landbetweenthe lakes.us).

**Arrival:** Campers must arrive, check-in, and occupy reserved sites within 24 hours from the scheduled arrival date. **After Hours:** Refer to posted instructions, occupy your assigned site, and check-in by 8am.

**Alcohol:** Public consumption of alcohol is prohibited in Kentucky.

**Campfires:** All campfires must be contained in fire rings. Extinguish fire thoroughly before leaving the site. No trash burning allowed.

**Camping Equipment:** Camping equipment may not be left unattended overnight.

**Camping Unit:** A camping unit is one sleeping tent or one wheeled vehicle—such as a Recreational Vehicle, motorhome, pop-up trailer, trailer, fifth-wheel, truck camper, van camper, or a truck with topper. A camping fee is charged for each camping unit.

**Campsite:** Campsites are available by reservation or at time of registration on a first-come, first-served basis. Reserve and pay for your entire stay because your site may not be available for extension.

**Campsite Capacity:** Each paid campsite allows for two vehicles. Additional visitors and vehicles will be charged. Campsites are limited to a maximum of eight people, two camping units in which only one may be wheeled, and up to five overnight vehicles. When the number exceeds the maximum, a second site must be rented, paid for, and occupied by an additional camping unit.

**Campsite Change:** Changing campsites requires staff to check availability before you can move. A change fee may be applied. If gatehouse staff is unavailable, check the "After Hours" notice posted on gatehouse information board for guidance.

**Campsite Gravel Pad:** All camping units and equipment must be placed on prepared gravel campsite pads. Stakes can be driven through the gravel campsite pads.

**Campsite Occupation:** A camping unit must occupy the site immediately after registration and must be fully set up including tents and pop-up trailers. Sites may not be "held" with a temporary camping unit. At least one adult, 18 years of age or older, and a proper camping unit must occupy site the first night and may not be left unattended overnight. Campers under 18 years of age must be accompanied by an adult.

**Check In/Out Time:** Check-in is 4:30pm | Check-out is 3:30pm. A \$16 late checkout fee will be assessed.

**Commercial Activities:** Registered campers wishing to sell items, conduct business, or distribute information must obtain prior approval, pay appropriate fees, and display his/her Special Use Permit.

**Emergency:** In case of emergency, dial 9-1-1.

**For non-emergency situations** or to report a theft, loss, accident, or disturbance — contact campground staff or call Forest Service Law Enforcement at 877-861-2457.

**Glass Containers:** Glass containers are not permitted in public areas.

**Group Activity Shelters:** All registered campers share activity shelters unless reserved in advance.

**Hunting Season:** Hunters with our Hunter Use Permits may store unloaded firearms at campsites.

**Liability:** Land Between the Lakes is neither liable nor responsible for damage, loss, or theft of personal property or for injuries to visitors.

**Length of Stay:** Regulations limit camping to 21 consecutive days. After 21 days, you must move to another site for a minimum of 7 days before returning to previous occupied site.

**Minimum Stay:** We have a two-night minimum stay on weekends and a three-night minimum stay on holidays.

**Natural Resources:** All wildlife and plants are protected. Please do not feed the wildlife. Use fallen branches as firewood. Do not nail, carve, or hang anything, including lanterns, on trees.

**Parking:** All vehicles must park on campsite gravel pad or in designated overflow areas.

**Pets:** Pets, including horses, must be on a leash of 6-feet or less and under physical control at all times while in campground. You are required to clean up after your pet. Pets are not permitted in bathrooms, shower buildings, and cabins. Pets must not be left alone.

**Prohibited:** Fireworks, metal detectors, vehicle maintenance, discharging gray or black water, golf carts, bicycles, mopeds, all-terrain vehicles (ATVs), and archery target practice are prohibited at all times.

**Recycle:** Please recycle at recycling stations.

**Road Rules:** 15 mph speed limit in campgrounds; Follow all state and federal regulations.

**Safety:** You are responsible for your own safety. Camp and ride at your own risk.

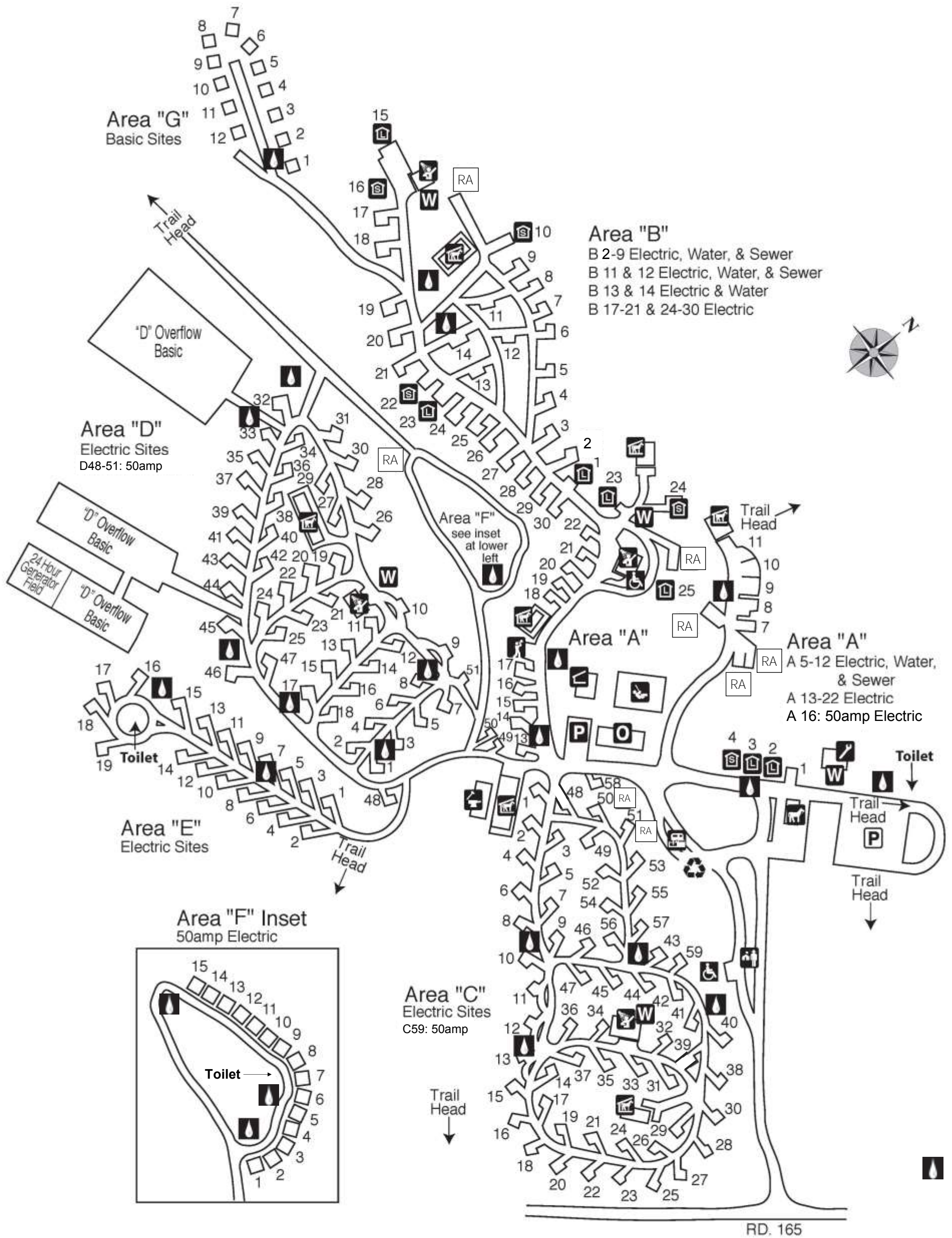
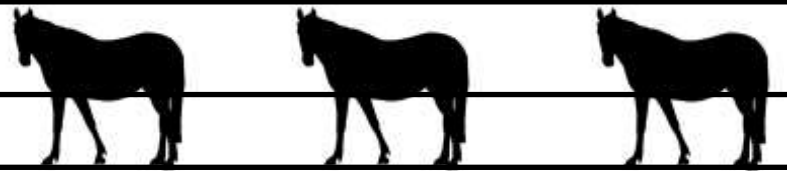
**Quiet Hours:** Quiet hours 11pm to 6am. Generators may not be used except in 24 hour generator area. Limit vehicle traffic to entering and exiting.

**Visitors:** All camp visitors must register at the gatehouse and obtain a current vehicle permit. Visiting hours are 6am to 11pm; vehicle fee is \$4 for up to 8 people. After 11pm, a full camping fee will be charged.

**Water:** Protect our water supply; please use biodegradable products and follow the rules. Discharge gray or black water at designated dump stations ONLY. Do NOT clean fish or other game in shower buildings, sinks, or at water faucets and hydrants. Do NOT wash dishes, brush teeth, or wash up at potable water sources. Do NOT wash vehicles or trailers at campground. Do NOT connect hoses to faucets or plug campers into outlets at shower buildings. To help protect our water supply from harmful bacteria, detach hoses from hydrants and remove from area when not in use. Do NOT tie up pets or horses to hydrants. For your safety, state certified employees monitor our drinking water. Waste water is processed on site through state permitted treatment facilities and eventually discharged into lakes.

# Wranglers Campground

Land Between the Lakes National Recreation Area



- |                          |                      |                   |                    |
|--------------------------|----------------------|-------------------|--------------------|
| Accessible Mounting Ramp | Farrier/Blacksmith   | Outpost           | Recycling Stations |
| Activity Court           | Gatehouse            | Parking           | Resident Attendant |
| Camping Shelters - Large | Horse Rental         | Parking (Day-Use) | Shower Building    |
| Camping Shelters - Small | Horse Wash           | Pavilion          | Stall/Barn         |
| Dump Station             | Maintenance Building | Playground        | Water Hydrant      |