



To Book a trip call 270-703-6133 or visit our website
www.kicknbass.net

Nov. 5th, 2015

Lake Levels ...

Caution ... Lower water levels! Know where you are at all times when running and use the channel markers, they're there for a reason. At lower water levels use caution when loading and unloading at the launching ramps.

Current lake level is just inches above winter pool and approximately 4.75 feet below summer pool and on a slow drawdown in accordance with the normal TVA operating schedule. For additional info, including generation schedule for Kentucky Lake, visit the TVA website: http://www.tva.gov/lakes/kyh_r.htm

Water Clarity and Temperature ... Both lakes have what I would consider ideal water clarity for fishing. The Lowrance temperature probe on my Ranger showed surface water temp at 62 degrees on the main lake with the water warming in the afternoon on sunny days.

Weather Outlook

Friday...Partly sunny. A chance of showers and a slight chance of thunderstorms in the morning. Highs around 70. Northwest winds 10 to 15 mph. Chance of precipitation 50 percent.

Friday Night...Partly cloudy. Lows in the upper 40s. North winds 5 to 10 mph.

Saturday...Mostly sunny. Highs around 60. North winds 5 to 10 mph.

Saturday Night...Clear. Lows in the upper 30s. North winds around 5 mph.

Sunday...Sunny. Highs in the mid 50s.

Sunday Night...Mostly clear with a 20 percent chance of rain showers. Lows around 40.

Monday...Partly sunny with a 20 percent chance of rain showers. Highs in the upper 50s.

Monday Night...Partly cloudy. Lows in the lower 40s.

Tuesday...Partly sunny. Highs in the lower 60s.

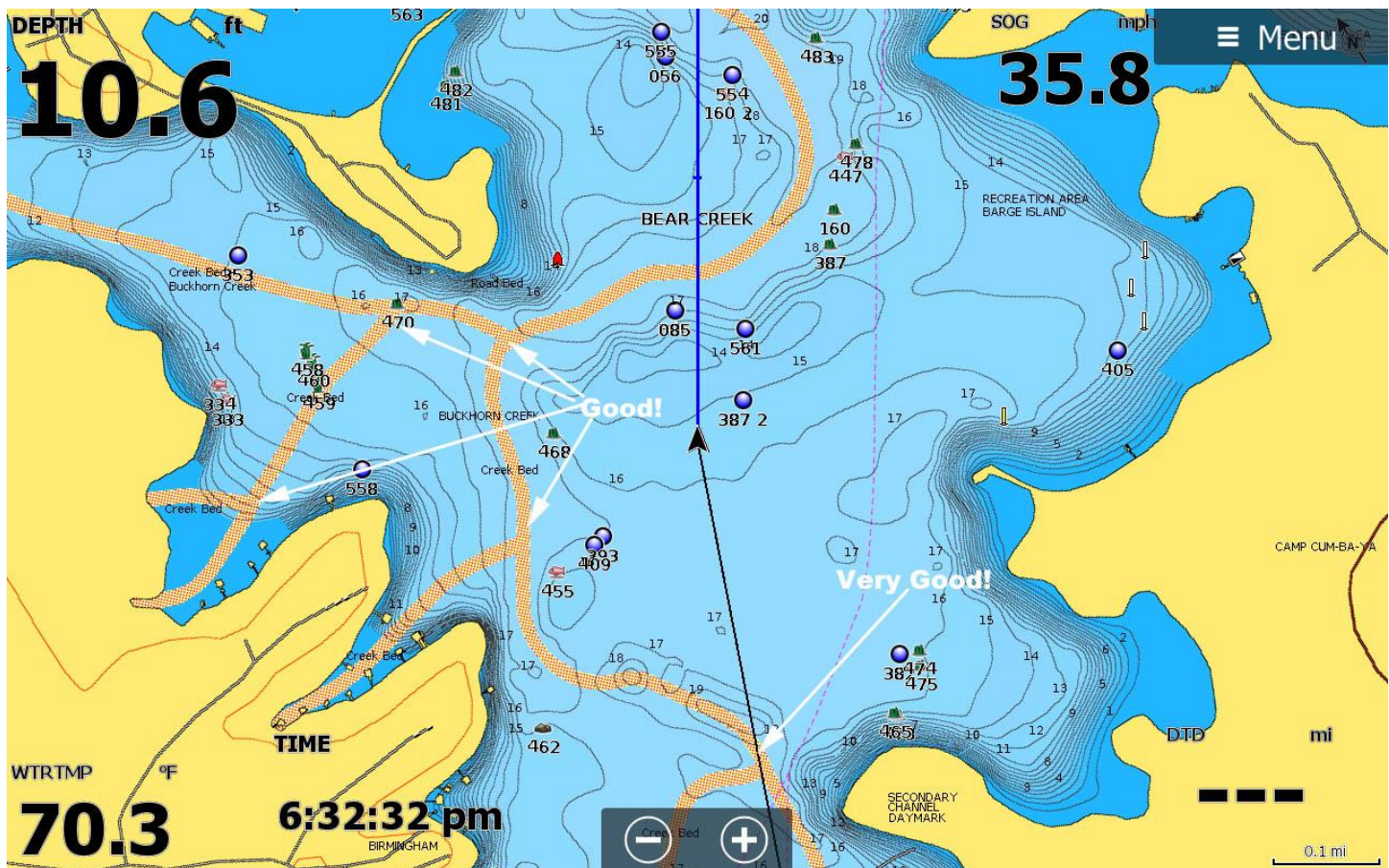
Tuesday Night...Partly cloudy. Lows in the upper 40s.

Veterans Day...Partly sunny with a 30 percent chance of showers. Highs in the mid 60s.

Fishing Report ...

Bass Fishing ...

We are seeing a lot more fish in very shallow water in the backs of the bays, especially in cloudy or overcast conditions. One day this week we had fog until 10:30 am and the action in the back of the bays was ridiculously good on Buzz Baits, Pop-R's and a Whopper Plopper. We're still catching some fish on sunny days at the mouth of the bays and deeper banks towards the back of the bays but the shallow bite is getting right. The bait is going shallower and the bass are following. We've seen large schools of shad feeding on moss-covered rocks on shallow banks and bass so shallow that their backs are almost out of the water when busting shad. That is the good part! Unfortunately it took some trial and error to find bass if they weren't shallow and we couldn't see any baitfish present.



Experience has shown that if the fish weren't shallow in the back most likely they were hanging out on the first deep connector where a drainage ditch intersects with the creek. But it's still hard to make yourself leave that ultra shallow bite and I'll admit we did spend some unproductive time this week trying to force a bite that wasn't there. Once we realized an adjustment was needed we worked the areas that drain from the back going towards the mouth of the bay. Some of our best fishing occurred when we've zeroed in on these areas and generally speaking the fish were bigger too! Use your electronic topo map to zero in on these locations. We altered our presentation depending on the mood of the fish ... using a Steel Shad Blade Bait for super aggressive fish, a Square Bill for moderately aggressive fish and a jerk bait for those fish that had to be sweet-talked into biting.

Look for this pattern to continue for a couple more weeks barring any unforeseen weather event.

Crappie Fishing ...

Lots and Lots of smaller fish is the word. Where these were fish this Spring nobody knows. Ronda at Bass & Gas has been filling minnow buckets non-stop all week and we've seen some folks in there twice daily. Best depths seem to be 6-12 feet and with the cloudy water the fish aren't spooky over brush or stake beds. *(Check out the Sonar Tip of the Week screen shot for a birds eye view of the type of cover they fish are holding on).*

Stripes ...

Yellows and whites are mixed in with crappie and are being caught on minnows and at the same depth. Also if you want to get in on some fast action cast a Steel Shad Blade Bait anywhere near the intersection of a drainage ditch and creek channel and you'll have a blast.

Come Fish With Us On the Kick'n Bass Pontoon!



November brings some of the best fishing of the year!

Have a Blast on the Kick'n Bass Pontoon. Families and Groups Welcome and Corporate Trips are our Specialty. We appreciate folks with Special Needs. We furnish the rods & reels and lures, clean and package your catch. It's the BEST VALUE on the lake.

Book Your Trip NOW! Call 270-703-6133

Precision Sonar

Electronics Tip of the Week

Sonar Accessory website: <http://precisionsonar.com/index.htm>



When Crappie are near or tight to cover using Lowrance Structurescan is the real deal. A properly tuned system will easily identify these fish holding areas. Knowing where the fish are allows you to position your boat and effectively fish.

The screen shot shows larger more aggressive fish positioned away from the cover and smaller fish tight among the stake bed. The larger fish were easily caught swimming a Kentucky Green curly tail grub on a 3/32 Ken's light wire hook lead head. The smaller fish were less aggressive and would only bite a minnow fished over the cover on a ESB slip bobber.

In our class we'll find areas like this, mark the position and show you how to return without ever assigning a waypoint. You'll learn this and much more!

Our sonar class is a hands on, in your boat, using your electronics program that will take your sonar ability to the next level. Schedule your personalized "On the Water" Sonar Class and contact rk@precisionsonar.com

Here's what some of our clients are saying about Precision Sonar's "On the Water" Sonar Class and their Precision Sonar Mounting Systems ...

Best thing ... hands down ... I've ever done to help my fishing!

Bobby Todd – St. Louis, Missouri

I was skeptical because I participated in another class whereby the instructor never left the parking lot. Needless to say I didn't learn a lot! I decided to try another instructor and I heard about Randy from some of the guys in our bass club and I must say his class is the real deal. I not only know now how to use my system, it performs better than it ever did. Well worth the time and investment in my opinion.

Col. Jim White (USAF Ret.) – Louisville, KY.

Great Class well worth the drive and the folks at Bass & Gas are top notch when it comes to installation and service.

Clark Thomas – Bowling Green, Ohio

Remember ...

The first step in our "On the Water Sonar Class" is to perform an inspection of your system to make sure the installation has been done to factory specs and all components are installed in the proper location. We'll meet at our Installation and Repair facility and if adjustments are needed we can have them made prior to beginning your class. Doing so assures you that your system will perform at a high level and you'll get the most out of your time on the water.

Our service is not an indoor seminar, watching a video on youtube, or looking at a depth finder in a classroom. It's hands on, in your boat using your electronics class that will take your understanding and know-how to another level!

IF YOU'RE **CONFUSED, FRUSTRATED, AND NEED ANSWERS then
Precision Sonar's "On the Water Sonar Class" is for YOU!**

Here's just some of what Precision Sonar can do for YOU!

- **Make sure your HDS unit(s) has the correct settings for the type of fishing you do.**

- Program the individual screens and install the overlay data on the screen that you want. Example: Depth, Water Temp, Time, etc.
- Arrange the screens so they display what you want them to show and make going from page to page orderly and non-confusing.
- Eliminate unwanted, non-practical on screen data that clutters your screen and gets in the way of using your unit to its maximum potential.
- Learn the art of waypoint management. No more cluttered maps with useless or unproductive waypoints. You'll learn how to identify which locations are waypoint worthy and how to go back to those locations without ever assigning a waypoint. You'll learn to only assign a waypoint once you are satisfied the location is worth saving.
- Demo the unit for you to help you be familiar with the screens and commands, so you'll have a good understanding of how to use the unit and take advantage of its fish finding capabilities.
- Provide you with back up material to keep you on track once the class is over

As a bonus you'll learn to read an electronic topo map and learn how to condense and area to a manageable level and identify those sweet spots that hold fish.

Check out the [PRECISION SONAR Console & Bow mounting systems for your boat at www.precisionsonar.com](http://www.precisionsonar.com)

Precision Sonar has sonar accessories for most makes and models of boats be sure and visit our website and look at the photo gallery



Bow Mount Sonar Bracket (Tall) & Bow Replacement Panel