



**To Book a trip call 270-703-6133 or visit our website**  
**[www.kicknbass.net](http://www.kicknbass.net)**

**Oct 14, 2015**

**Lake Levels ...** Current lake level is approximately 4 feet below summer pool and on a slow drawdown in accordance with the normal TVA operating schedule. For additional info, including generation schedule for Kentucky Lake, visit the TVA website:  
[http://www.tva.gov/lakes/kyh\\_r.htm](http://www.tva.gov/lakes/kyh_r.htm)

**Water Clarity and Temperature ...** Both lakes have what I would consider ideal water clarity for fishing. The Lowrance temperature probe on my Ranger showed surface water temp at 70 degrees on the main lake with the water warming in the afternoon on sunny days.

### **Weather Outlook**

**Wednesday...**Sunny. Highs in the lower 70s. Northwest winds around 5 mph.

**Wednesday Night...**Clear. Lows in the mid 40s. North winds 5 mph in the evening becoming calm after midnight.

**Thursday...**Sunny. Highs in the mid 70s. South winds 5 to 10 mph.

**Thursday Night...**Mostly clear. Lows in the lower 50s.

**Friday...**Mostly sunny. Highs in the mid 60s.

**Friday Night...**Clear. Lows in the lower 40s.

**Saturday...**Sunny. Highs in the upper 50s.

**Saturday Night...**Clear. Patchy frost. Lows in the upper 30s.

**Sunday...**Sunny. Highs in the lower 60s.

**Sunday Night...**Mostly clear. Lows in the mid 40s.

**Monday...**Mostly sunny. Highs around 70.

## Prime Feeding Times for Gilbertsville, KY 42044

14	15	16	17	18
<b>Sun:</b> <b>Rise:</b> 7:30 AM <b>Transit:</b> 1:00 PM <b>Set:</b> 6:30 PM <b>Moon:</b> <b>Rise:</b> 8:59 AM <b>Transit:</b> 2:20 PM <b>Under Foot:</b> 2:45 AM <b>Set:</b> 7:35 PM <b>Moon Phase:</b> Waxing Crescent 3% Illuminated <b>Good Activity:</b> 7:59 AM - 9:59 AM 6:35 PM - 8:35 PM <b>Excellent Activity:</b> 1:15 AM - 4:15 AM 12:50 PM - 3:50 PM <b>Day Rating:</b> 	<b>Sun:</b> <b>Rise:</b> 7:31 AM <b>Transit:</b> 1:00 PM <b>Set:</b> 6:28 PM <b>Moon:</b> <b>Rise:</b> 9:58 AM <b>Transit:</b> 3:06 PM <b>Under Foot:</b> 3:31 AM <b>Set:</b> 8:09 PM <b>Moon Phase:</b> Waxing Crescent 7% Illuminated <b>Good Activity:</b> 8:58 AM - 10:58 AM 7:09 PM - 9:09 PM <b>Excellent Activity:</b> 2:01 AM - 5:01 AM 1:36 PM - 4:36 PM <b>Day Rating:</b> 	<b>Sun:</b> <b>Rise:</b> 7:32 AM <b>Transit:</b> 12:59 PM <b>Set:</b> 6:26 PM <b>Moon:</b> <b>Rise:</b> 10:56 AM <b>Transit:</b> 3:53 PM <b>Under Foot:</b> 4:20 AM <b>Set:</b> 8:48 PM <b>Moon Phase:</b> Waxing Crescent 12% Illuminated <b>Good Activity:</b> 9:56 AM - 11:56 AM 7:48 PM - 9:48 PM <b>Excellent Activity:</b> 2:50 AM - 5:50 AM 2:23 PM - 5:23 PM <b>Day Rating:</b> 	<b>Sun:</b> <b>Rise:</b> 7:34 AM <b>Transit:</b> 12:59 PM <b>Set:</b> 6:24 PM <b>Moon:</b> <b>Rise:</b> 11:52 AM <b>Transit:</b> 4:43 PM <b>Under Foot:</b> 5:10 AM <b>Set:</b> 9:32 PM <b>Moon Phase:</b> Waxing Crescent 20% Illuminated <b>Good Activity:</b> 10:52 AM - 12:52 PM 8:32 PM - 10:32 PM <b>Excellent Activity:</b> 3:40 AM - 6:40 AM 3:13 PM - 6:13 PM <b>Day Rating:</b> 	<b>Sun:</b> <b>Rise:</b> 7:35 AM <b>Transit:</b> 12:59 PM <b>Set:</b> 6:22 PM <b>Moon:</b> <b>Rise:</b> 12:45 PM <b>Transit:</b> 5:34 PM <b>Under Foot:</b> 6:02 AM <b>Set:</b> 10:23 PM <b>Moon Phase:</b> Waxing Crescent 28% Illuminated <b>Good Activity:</b> 11:45 AM - 1:45 PM 9:23 PM - 11:23 PM <b>Excellent Activity:</b> 4:32 AM - 7:32 AM 4:04 PM - 7:04 PM <b>Day Rating:</b> 

### Fishing Report - Bass Fishing from the Ranger Boat

#### **Bass Fishing ...**

**Alabama Rig ...** Pretty good choice right now for suspended fish off secondary points, both at the mouth of the bays and underwater points near the ledges. Best depth seems to be 8-12 feet. Scan and look for suspended fish, the A-Rig can be deadly at this time.

**Top Water ...** This has been a fairly bright spot for us early and late. Watch for surface action. White bass and largemouth are schooling together and herding baitfish. Prime locations are gravel points at the mouth of the bays and along deeper banks.

My good friend Bill Hurle from Louisville gave me a *WHOPPER PLOPPER 90 by River2sea lures and told me to try it*. The first cast I made with it I caught a 6.3 pound Largemouth and then promptly lost it on my second cast when I got broke off when a Chain Pickerel, a cousin to the Northern Pike broke me off. It's been a couple of years since I've seen a Chain Pickerel. If anyone else has seen these fish let me know. I would later find the bait floating on the surface.

**Ledge Fishing ...** we're still catching some fish dragging plastics and Shakey Heads but the bite is very concentrated and on specific areas. Look for drains and where creeks intersect with the ledge. Best depths are 14-20 feet.

## Pontoon Fishing ...

**Crappie ...** Trolling cranks for crappie has been consistent for our clients this week. Capt. Rich has been trolling cranks deep 16-19 feet and catching some big blacks and whites. The numbers have been not great but respectable each day. Several fish are in the 14-16 inch class

**White & Yellow bass ...** fishing has been really good for those clients fishing from the pontoon. We're catching some decent fish on the ledges and the mouth of the bays on a Steel Shad blade bait and Ken's Hybrid Spinner but right now live bait is king. Use your electronics to determine what depth the fish are holding and drop a minnow or live shad and hang on. You might have to go thru some bait but the action is great.

**Catfish ...** fair on the top of the ledges next to deeper water, 20 plus on a Steel Shad blade bait.

## ***Kick'n Bass Pontoon It's Crappie Time Again !!!***



***The Big Crappie are showing up again. Joseph Go from Hendersonville Tennessee with a 16 incher caught trolling cranks from the Pontoon.***

***Everyone has a good time on our boat ! Jere Westbrook (center) from Wichita, KS and an unidentified Packer Fan from Wisconsin with a BIG Crappie.***

## ***Come Fish With Us On the Kick'n Bass Pontoon!***



**Have a Blast on the Kick'n Bass Pontoon. Families and Groups Welcome and Corporate Trips are our Specialty.**

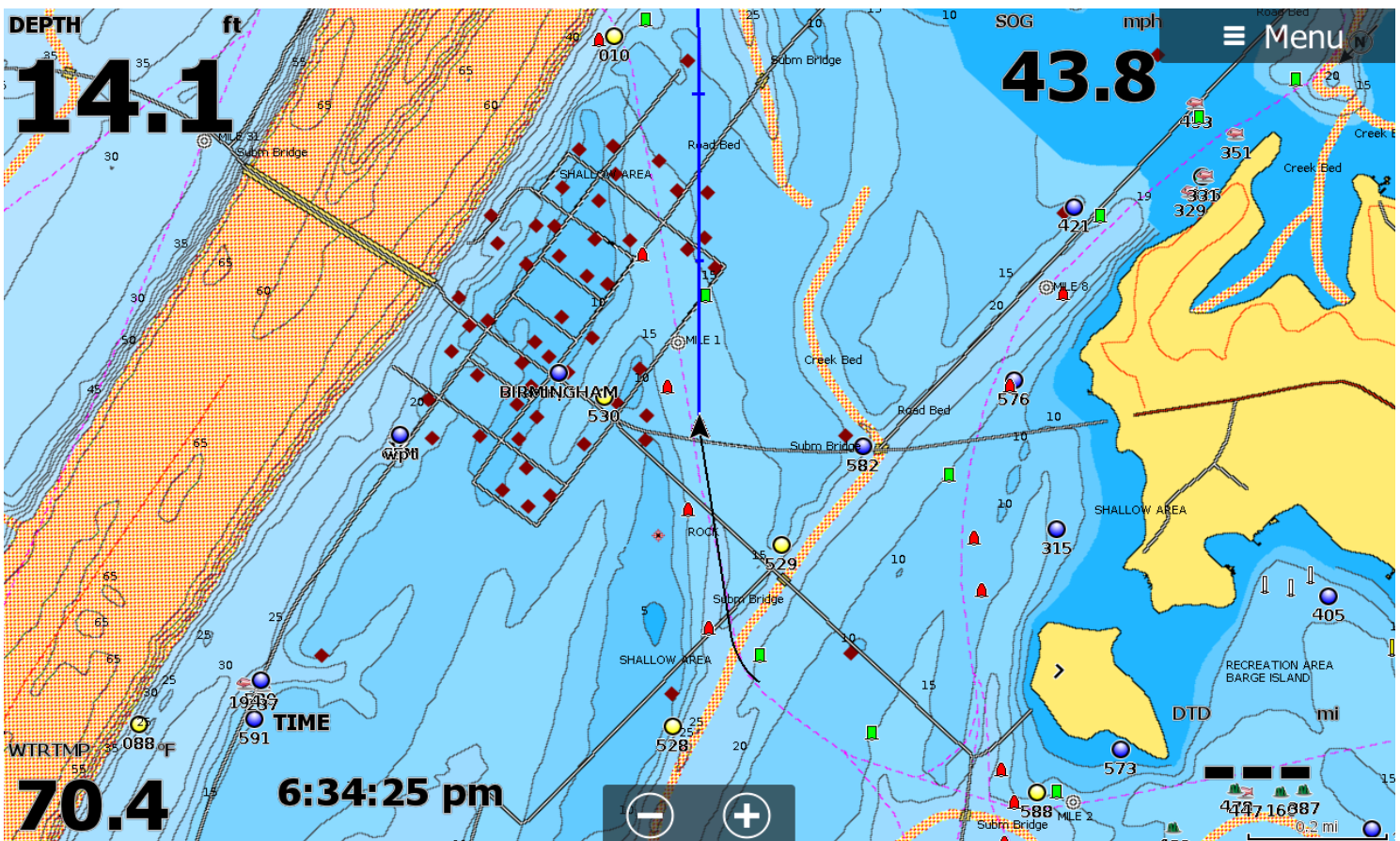
**We appreciate folks with Special Needs. We furnish the rods & reels and lures, clean and package your catch. It's the BEST VALUE on the lake.**

**Book Your Trip NOW! Call 270-703-6133**

## ***Precision Sonar***

### ***Electronics Tip of the Week***

Sonar Accessory website: <http://precisionsonar.com/index.htm>



***Understanding Your Electronic Topo Map Will Help You  
Become a Better Fisherman***

*In our sonar class we spend a quite of bit of time educating our fellow fishermen on how to get the most out of their electronic topographical map. Electronic maps are updated periodically and in a lot of cases are more current than the older paper maps.*

*Not everyone can spend 300 days a year on the water and time fishing is limited to the weekends and an occasional day off. It's important to be able to make the most of your time on the water. In our class you'll learn to take an area the lake and condense it to a manageable form, thus eliminating unproductive water and find areas that have the highest potential to hold game fish. Having the most updated Navionics map card is essential to do this. As you can see, among other things, fish holding areas like submerged road beds, foundations and creek channels are clearly defined.*

*Our sonar class is a hands on, in your boat, using your electronics program that will take your sonar ability to the next level. Schedule your personalized "On the Water" Sonar Class and contact [rk@precisionsonar.com](mailto:rk@precisionsonar.com)*

## ***Here's what some of our clients are saying about Precision Sonar's "On the Water" Sonar Class and their Precision Sonar Mounting Systems ...***

### ***Here is a Recent Post on our Facebook page from Art Fowler from Saratoga Springs, NY***

*Art Fowler*

*October 11 at 8:05am*

*I first talked with Randy Kuhens, the owner of Precision Sonar, when I ordered a one of his Bow Mount Sonar Brackets and two sets of the DuraSafe Universal Elocks. For a while, I had been looking for someone with set-up expertise for Lowrance depth finders and could not find anyone in my area. After talking with Randy and looking at the Precision Sonar website, I realized that I had found the right person. I made the long trip from upstate New York to Southwest Kentucky. By that time, I had also talked with Matt Quinn of Bass & Gas from whom I purchased a Genesis HD 9 and 12. They installed the units on the promised date and the next day I was on the water with Randy. Very simply put, Randy knows fishing electronics and knows how to teach the subject. He couples his guide experience with the knowledge of sonar to give you real views of what we all want to see when trying to locate fish. The morning I spent with him was well worth the trip. I heartily recommend both Precision Sonar and Bass & Gas.*

***Art it was a pleasure meeting you and we appreciate all the kind comments!***

***RK***

## **Remember ...**

*The first step in our "On the Water Sonar Class" is to perform an inspection of your system to make sure the installation has been done to factory specs and all components are installed in the proper location. We'll meet at our Installation and Repair facility and if adjustments are needed we can have them made prior to beginning your class. Doing so assures you that your system will perform at a high level and you'll get the most out of your time on the water.*

**Our service is not an indoor seminar, watching a video on youtube, or looking at a depth finder in a classroom. It's hands on, in your boat using your electronics class that will take your understanding and know-how to another level!**

**IF YOU'RE **CONFUSED, FRUSTRATED, AND NEED ANSWERS** then Precision Sonar's "On the Water Sonar Class" is for YOU!**

**Here's just some of what Precision Sonar can do for YOU!**

- **Make sure your HDS unit(s) has the correct settings for the type of fishing you do.**
- **Program the individual screens and install the overlay data on the screen that you want. Example: Depth, Water Temp, Time, etc.**
- **Arrange the screens so they display what you want them to show and make going from page to page orderly and non-confusing.**
- **Eliminate unwanted, non-practical on screen data that clutters your screen and gets in the way of using your unit to its maximum potential.**
- **Learn the art of waypoint management. No more cluttered maps with useless or unproductive waypoints. You'll learn how to identify which locations are waypoint worthy and how to go back to those locations without ever assigning a waypoint. You'll learn to only assign a waypoint once you are satisfied the location is worth saving.**
- **Demo the unit for you to help you be familiar with the screens and commands, so you'll have a good understanding of how to use the unit and take advantage of its fish finding capabilities.**
- **Provide you with back up material to keep you on track once the class is over**

**As a bonus you'll learn to read an electronic topo map and learn how to condense and area to a manageable level and identify those sweet spots that hold fish.**



Check out the **PRECISION SONAR Console & Bow mounting systems for your boat at [www.precisionsonar.com](http://www.precisionsonar.com)**

**Precision Sonar Single Mount and Side by Side Mounting systems available for FX, ZX and iclass Skeeter consoles.**



***Don't Miss the LOWRANCE Open House at Bass & Gas !!!!***

<p>PHONE (270) 527-1900 <a href="http://WWW.BASSNGAS.COM">WWW.BASSNGAS.COM</a></p>		<p><b>Bass &amp; Gas</b> TACKLE &amp; MORE!</p>		<p>3243 US HIGHWAY 68 EAST BENTON, KY 42025</p>			
<p>OPEN HOUSE EVENTS</p>		<p>YOUR INVITED!!!</p>					
<p><b>Raymarine®</b> BY <b>FLIR</b></p>		<p>FREE SEMINARS OVER \$10,000 IN GIVEAWAYS / RAFFLES</p>					
<p>OCTOBER 2-3, 2015</p>		<p>MEET THE PRO'S ON THE WATER DEMOS NEW PRODUCT DEMOS HUGE PRODUCT DISCOUNTS</p>					
<p><b>HUMMINBIRD</b> <b>MINN-KOTA</b></p>		<p>FRIDAYS 1PM-6PM SATURDAYS 10AM-6PM</p>					
<p>OCTOBER 9-10, 2015</p>		<p>FOR MORE INFORMATION VISIT OUR FACEBOOK PAGE <a href="http://www.facebook.com/bassngas">www.facebook.com/bassngas</a></p>					
<p><b>LOWRANCE®</b></p>		<p> FOR MORE INFORMATION VISIT OUR FACEBOOK PAGE <a href="http://www.facebook.com/bassngas">www.facebook.com/bassngas</a></p>					
<p>OCTOBER 30-31, 2015</p>							

