



To Book a trip call 270-703-6133 or visit our website
www.kicknbass.net

Oct 2, 2015

Lake Levels ... Current lake level is approximately 4 feet below summer pool and on a slow drawdown in accordance with the normal TVA operating schedule. For additional info, including generation schedule for Kentucky Lake, visit the TVA website:
http://www.tva.gov/lakes/kyh_r.htm

Water Clarity and Temperature ... Both lakes have what I would consider ideal water clarity for fishing. The Lowrance temperature probe on my Ranger showed surface water temp at 74 degrees on the main lake with the water warming in the afternoon on sunny days.

Weather Outlook

Today...Mostly cloudy. A 20 percent chance of showers in the afternoon. Highs in the mid 60s. North winds 10 to 15 mph.

Tonight...Cloudy with a 30 percent chance of showers. Lows in the lower 50s. Northeast winds 10 to 15 mph.

Saturday...Mostly cloudy with a 20 percent chance of showers. Highs in the lower 60s. Northeast winds 10 to 15 mph.

Saturday Night...Cloudy with a 20 percent chance of showers. Lows in the lower 50s. North winds around 10 mph.

Sunday...Partly sunny. Highs in the lower 70s. North winds around 10 mph.

Sunday Night...Mostly cloudy. Lows in the upper 50s.

Monday...Mostly sunny. Highs in the upper 70s.

Monday Night...Mostly clear. Lows in the upper 50s.

Tuesday...Mostly sunny. Highs in the upper 70s.

Tuesday Night...Mostly clear. Lows in the upper 50s.

Wednesday...Partly sunny. Highs around 80.

Wednesday Night...Mostly clear. Lows in the lower 60s.

Thursday...Partly sunny. Highs in the lower 80s.

Prime Feeding Times for Gilbertsville, KY 42044

2	3	4	5	6	7	8
Sun: Rise: 7:13 AM Transit: 1:03 PM Set: 6:52 PM Moon: Rise: 10:21 PM Transit: 5:00 AM Under Foot: 5:29 PM Set: 12:32 PM Moon Phase: Waning Gibbous 73% Illuminated Good Activity: 11:32 AM - 1:32 PM 9:21 PM - 11:21 PM Excellent Activity: 3:30 AM - 6:30 AM 3:59 PM - 6:59 PM Day Rating: 	Sun: Rise: 7:15 AM Transit: 1:03 PM Set: 6:50 PM Moon: Rise: 11:13 PM Transit: 5:55 AM Under Foot: 6:24 PM Set: 1:31 PM Moon Phase: Waning Gibbous 62% Illuminated Good Activity: 12:31 PM - 2:31 PM 10:13 PM - 12:13 AM(n) Excellent Activity: 4:25 AM - 7:25 AM 4:54 PM - 7:54 PM Day Rating: 	Sun: Rise: 7:16 AM Transit: 1:03 PM Set: 6:48 PM Moon: Rise: (r) Transit: 6:49 AM Under Foot: 7:17 PM Set: 2:23 PM Moon Phase: Last Quarter 52% Illuminated Good Activity: 11:09 PM(p) - 1:09 AM 1:23 PM - 3:23 PM Excellent Activity: 5:19 AM - 8:19 AM 5:47 PM - 8:47 PM Day Rating: 	Sun: Rise: 7:17 AM Transit: 1:02 PM Set: 6:46 PM Moon: Rise: 12:09 AM Transit: 7:40 AM Under Foot: 8:07 PM Set: 3:07 PM Moon Phase: Waning Crescent 42% Illuminated Good Activity: 11:09 PM(p) - 1:09 AM 2:07 PM - 4:07 PM Excellent Activity: 6:10 AM - 9:10 AM 6:37 PM - 9:37 PM Day Rating: 	Sun: Rise: 7:19 AM Transit: 1:02 PM Set: 6:45 PM Moon: Rise: 1:07 AM Transit: 8:29 AM Under Foot: 8:55 PM Set: 3:46 PM Moon Phase: Waning Crescent 32% Illuminated Good Activity: 12:07 AM - 2:07 AM 2:46 PM - 4:46 PM Excellent Activity: 6:59 AM - 9:59 AM 7:25 PM - 10:25 PM Day Rating: 	Sun: Rise: 7:20 AM Transit: 1:02 PM Set: 6:43 PM Moon: Rise: 2:06 AM Transit: 9:16 AM Under Foot: 9:41 PM Set: 4:19 PM Moon Phase: Waning Crescent 23% Illuminated Good Activity: 1:06 AM - 3:06 AM 3:19 PM - 5:19 PM Excellent Activity: 7:46 AM - 10:46 AM 8:11 PM - 11:11 PM Day Rating: 	Sun: Rise: 7:21 AM Transit: 1:01 PM Set: 6:41 PM Moon: Rise: 3:05 AM Transit: 10:01 AM Under Foot: 10:25 PM Set: 4:49 PM Moon Phase: Waning Crescent 16% Illuminated Good Activity: 2:05 AM - 4:05 AM 3:49 PM - 5:49 PM Excellent Activity: 8:31 AM - 11:31 AM 8:55 PM - 11:55 PM Day Rating:

Fishing Report - Bass Fishing from the Ranger Boat

Bass Fishing ... With the baitfish beginning their fall migration the bass and all species of fish for that matter are moving and are scattered from the main lake to the bays and all points in between. While this does make the fish difficult to pattern once you do find them you'll be rewarded with some pretty good action. As the migration continues we'll see bigger schools of baitfish and lots of bass working them. So get ready for some of the best fishing of the year.

This week we switch back and forth working both the night shift and early morning trips. Our efforts fishing the night shift coincided with the full moon and we were not disappointed. Early in the week Scott McGlinchy and I fished together and had a great trip catching a lot of quality fish. If you haven't fished at night you don't know what you're missing. We basically had the lake to ourselves, the fish were cooperative and it was just a great overall experience. With the baitfish transitioning to shallower water the bass are not as spooky at night and are easier to catch. Remember the places that are good during the day are great at night. We fished basically deep water banks and fished slow using soft plastics. During the day steel shad blade baits, medium running crank baits were used to fish the mouths of the bays to catch a fair amount of fish.

Top Water ... This has been a fairly bright spot for us early and late. Watch for surface action. White bass and largemouth are schooling together and herding baitfish. Prime locations are gravel points at the mouth of the bays and along deeper banks.

Crappie ... Trolling cranks for crappie has been consistent for our clients this week. Capt. Rich has been trolling SPRO cranks deep 16-19 feet and catching some big blacks and whites. The numbers have been not great but respectable each day.

White & Yellow bass ... fishing has been really good for those clients fishing from the

pontoon. We're catching some decent fish on the ledges and the mouth of the bays on a Steel Shad blade bait and Ken's Hybrid Spinner but right now live bait is king. Use your electronics to determine what depth the fish are holding and drop a minnow or live shad and hang on. You might have to go thru some bait but the action is great.

Bluegill ... No Report

Catfish ... fair on the top of the ledges next to deeper water, 20 plus on a Steel Shad blade bait.

Kick'n Bass Pontoon

It's Crappie Time Again !!!



The Big Ones are showing up again ... Captain Rich with some nice ones caught trolling cranks from the Kick'n Bass Pontoon

Come Fish With Us On the Kick'n Bass Pontoon!

Have a Blast on the Kick'n Bass Pontoon. Families and Groups Welcome and Corporate Trips are our Specialty.

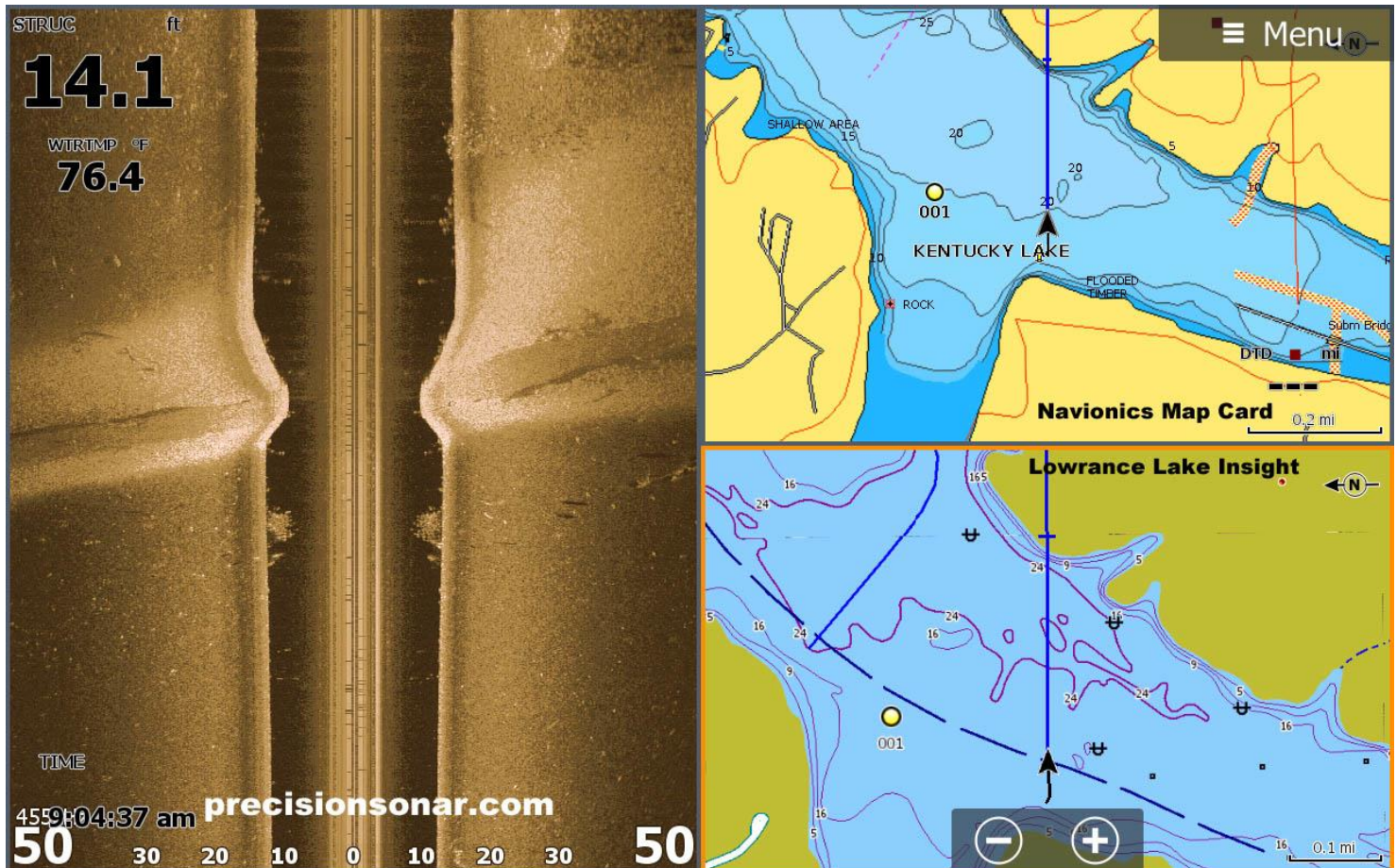
We appreciate folks with Special Needs. We furnish the rods & reels and lures, clean and package your catch. It's the BEST VALUE on the lake.

Book Your Trip NOW! Call 270-703-6133

Precision Sonar

Electronics Tip of the Week

Sonar Accessory website: <http://precisionsonar.com/index.htm>



Learn To Use an Electronic Topo Map - Navionics vs. Lake Insight

Clients ask me which is better Navionics Mapping or Lake Insight (Lowrance built in mapping)? Each has their own features and benefits and advantages but the biggest

asset of having both maps is being able to use them in conjunction with Structurescan to locate areas of importance that would otherwise be missed.

Take the screen shot below for example ... with the Navionics map many landmarks, contours and in this case a road bed, is not shown due to the lake being sounded at winter pool level (5 feet lower than summer pool)

Lake Insight on the other hand identifies the road bed (Blue Line) and displays the boat Icon (Black Arrow) on the road bed. The Structurescan image confirms the location of the road and authenticates the accuracy of the Lake Insight map. Both Maps add value!

Our sonar class is a hands on, in your boat, using your electronics program that will take your sonar ability to the next level. Schedule your personalized "On the Water" Sonar Class and contact rk@precisionsonar.com

Here's what some of our clients are saying about Precision Sonar's "On the Water" Sonar Class and their Precision Sonar Mounting Systems ...

This is a Recent Post on Bass Boat Central from Sam Rhudy from Abingdon, VA.

On water sonar class with Precision Sonar

This week I took a class with Randy Kuhens, owner of Precision Sonar on Kentucky lake. What a eye opening experience this was. I run 2 HDS 9 gen 3 graphs and after Randy set them up to proper specs and then we hit the water. Randy went over several things with me in my boat that will for sure make a huge difference in my fishing. I learned things about my graphs that I never new existed and will use them everytime I'm on the water now. The images are incredible how clear they can be with a unit that is setup right. He goes over every aspect of your graph and makes sure you understand how to use the correctly. He's good at answering any questions you might have (and trust me, you will have them). He also shows you what key areas look like on your charts and how to eliminate dead water. Just knowing this will give you more confidence in your fishing alone. I am more confident now than ever knowing my graphs are right. I can use them to their fullest potential to help me find fish, structure and cover and then put more fish in the boat. I have never met anyone more knowledgeable on graphs than he is.

Bottom line is, this class will help you catch more fish no doubt!! I made the 7hr drive and came out by myself. I had never been to Kentucky lake before and from talking to the locals the fishing has been tough. Everyone said you came at the wrong time. But I was coming for the class first and foremost, but who can pass up fishing Kentucky lake!!! It took me about a day to find a pattern and after eliminating a bunch of water and finding key brush piles on my graphs I started catching them and cought 10 or so. Yesterday morning I sat on a brush piles that I had found and marked the day before and for 2hrs I loaded the boat with 20+ bass that were a average of 2-3lbs. I couldn't have asked for a better day!! Thanks Randy for teaching me and giving me the confidence to go to my home lake or a new lake and find fish and catch them!! Take this class and catch more fish!!!!

Sam, thank you so much for all the kind words. It's posts like this that really make my day and motivate me to keep doing the "On the Water" sonar classes.

RK

Remember ...

The first step in our "On the Water Sonar Class" is to perform an inspection of your system to make sure the installation has been done to factory specs and all components are installed in the proper location. We'll meet at our Installation and Repair facility and if adjustments are needed we can have them made prior to beginning your class. Doing so assures you that your system will perform at a high level and you'll get the most out of your time on the water.

Our service is not an indoor seminar, watching a video on youtube, or looking at a depth finder in a classroom. It's hands on, in your boat using your electronics class that will take your understanding and know-how to another level!

IF YOU'RE **CONFUSED, FRUSTRATED, AND NEED ANSWERS then Precision Sonar's "On the Water Sonar Class" is for YOU!**

Here's just some of what Precision Sonar can do for YOU!

- **Make sure your HDS unit(s) has the correct settings for the type of fishing you do.**
- **Program the individual screens and install the overlay data on the screen that you want. Example: Depth, Water Temp, Time, etc.**
- **Arrange the screens so they display what you want them to show and make going from page to page orderly and non-confusing.**
- **Eliminate unwanted, non-practical on screen data that clutters your screen and gets in the way of using your unit to its maximum potential.**
- **Learn the art of waypoint management. No more cluttered maps with useless or unproductive waypoints. You'll learn how to identify which locations are waypoint worthy and how to go back to those locations without ever assigning a waypoint. You'll learn to only assign a waypoint once you are satisfied the location is worth saving.**
- **Demo the unit for you to help you be familiar with the screens and commands, so you'll have a good understanding of how to use the unit and take advantage of its fish finding capabilities.**
- **Provide you with back up material to keep you on track once the class is over**

As a bonus you'll learn to read an electronic topo map and learn how to condense and area to a manageable level and identify those sweet spots that hold fish.

Check out the **PRECISION SONAR Console & Bow mounting systems for your boat at www.precisionsonar.com**

**Precision Sonar Side by Side Mounting system
for earlier Ranger Z Series consoles**



Don't Miss the Open House at Bass & Gas !!!!

<p>PHONE (270) 527-1900 WWW.BASSNGAS.COM</p>	<p>Bass & Gas <small>Tackle & More!!</small></p>	<p>3243 US HIGHWAY 68 EAST BENTON, KY 42025</p>
<p>OPEN HOUSE EVENTS</p>		<p>YOUR INVITED!!!</p>
<p>Raymarine® <small>BY FLIR</small> OCTOBER 2-3, 2015</p>		<p>FREE SEMINARS OVER \$10,000 IN GIVEAWAYS / RAFFLES</p>
<p>HUMMINBIRD® MINN-KOTA® OCTOBER 9-10, 2015</p>		<p>MEET THE PRO'S ON THE WATER DEMOS NEW PRODUCT DEMOS HUGE PRODUCT DISCOUNTS</p>
<p>LOWRANCE® OCTOBER 30-31, 2015</p>		<p>FRIDAYS 1PM-6PM SATURDAYS 10AM-6PM f FOR MORE INFORMATION VISIT OUR FACEBOOK PAGE www.facebook.com/bassngas</p>

