



**To Book a trip call 270-703-6133 or visit our website**  
[www.kicknbass.net](http://www.kicknbass.net)

**Sept 25th, 2015**

**\*\*\*\*\* FOR SALE \*\*\*\*\***

**Minn Kota Terrova 101 36 Volt**  
**Includes foot control - \$800**  
**Contact [rk@kicknbass.net](mailto:rk@kicknbass.net)**

### **Subscribe to our Fishing report**

Over 2500 and growing! Join the growing number of fishermen and women that receive our fishing report weekly. All you have to do is sign up! Click on this link  
<http://eepurl.com/-3Sbj>.

**Lake Levels ...** Current lake level is approximately 3.75 feet below summer pool and on a slow drawdown in accordance with the normal TVA operating schedule. For additional info, including generation schedule for Kentucky Lake, visit the TVA website:  
[http://www.tva.gov/lakes/kyh\\_r.htm](http://www.tva.gov/lakes/kyh_r.htm)

**Water Clarity and Temperature ...** Both lakes have what I would consider ideal water clarity for fishing. The Lowrance temperature probe on my Ranger showed surface water temp at 74 degrees on the main lake with the water warming in the afternoon on sunny days.

### **Weather Outlook**

**Friday...**Partly sunny. Highs in the lower 80s. Northeast winds 5 to 10 mph.

**Friday Night...**Mostly cloudy with a 30 percent chance of showers. Lows around 60. Northeast winds 5 to 10 mph.

**Saturday...**Mostly cloudy with a 30 percent chance of showers. Highs in the mid 70s. Northeast winds around 5 mph.

**Saturday Night...**Mostly cloudy with a 20 percent chance of showers. Lows in the lower 60s. East winds 5 mph.

**Sunday...**Partly sunny with isolated showers. Highs around 80. Chance of precipitation 20 percent.

**Sunday Night...**Mostly clear. Lows in the lower 60s.

**Monday...**Partly sunny with a 20 percent chance of showers. Highs in the lower 80s.

**Monday Night...**Partly cloudy with a 20 percent chance of showers. Lows in the mid 60s.

**Tuesday...**Partly sunny. A chance of showers in the morning... Then a slight chance of showers and thunderstorms in the afternoon. Highs in the lower 80s. Chance of precipitation 30 percent.

**Tuesday Night...**Partly cloudy. A 20 percent chance of showers and thunderstorms in the evening. Lows in the mid 60s.

**Wednesday...**Partly sunny. A 20 percent chance of showers and thunderstorms in the morning. Highs in the lower 80s.

**Wednesday Night...**Partly cloudy. Lows in the lower 60s.

### Prime Feeding Times for Gilbertsville, KY 42044

| 25  | 26   | 27  | 28  | 29  | 30   |
|---|--|---|---|---|--|
| <b>Sun:</b><br>Rise: 7:04 AM<br>Transit: 1:06 PM<br>Set: 7:06 PM                              | <b>Sun:</b><br>Rise: 7:06 AM<br>Transit: 1:05 PM<br>Set: 7:04 PM                         | <b>Sun:</b><br>Rise: 7:07 AM<br>Transit: 1:05 PM<br>Set: 7:02 PM                              | <b>Sun:</b><br>Rise: 7:08 AM<br>Transit: 1:05 PM<br>Set: 7:00 PM                            | <b>Sun:</b><br>Rise: 7:10 AM<br>Transit: 1:04 PM<br>Set: 6:58 PM                            | <b>Sun:</b><br>Rise: 7:11 AM<br>Transit: 1:04 PM<br>Set: 6:56 PM                             |
| <b>Moon:</b><br>Rise: 5:44 PM<br>Transit: 11:20 PM<br>Under Foot:<br>11:51 AM<br>Set: 3:50 AM | <b>Moon:</b><br>Rise: 6:20 PM<br>Transit: (t)<br>Under Foot:<br>12:19 AM<br>Set: 5:06 AM | <b>Moon:</b><br>Rise: 6:55 PM<br>Transit: 12:17 AM<br>Under Foot:<br>12:47 PM<br>Set: 6:23 AM | <b>Moon:</b><br>Rise: 7:31 PM<br>Transit: 1:13 AM<br>Under Foot:<br>1:43 PM<br>Set: 7:41 AM | <b>Moon:</b><br>Rise: 8:08 PM<br>Transit: 2:09 AM<br>Under Foot:<br>2:40 PM<br>Set: 8:59 AM | <b>Moon:</b><br>Rise: 8:48 PM<br>Transit: 3:06 AM<br>Under Foot:<br>3:37 PM<br>Set: 10:14 AM |
| <b>Moon Phase:</b><br>Waxing Gibbous<br>91% Illuminated                                       | <b>Moon Phase:</b><br>Waxing Gibbous<br>97% Illuminated                                  | <b>Moon Phase:</b><br>Full Moon<br>100% Illuminated   | <b>Moon Phase:</b><br>Waning Gibbous<br>99% Illuminated                                     | <b>Moon Phase:</b><br>Waning Gibbous<br>96% Illuminated                                     | <b>Moon Phase:</b><br>Waning Gibbous<br>90% Illuminated                                      |
| <b>Good Activity:</b><br>2:50 AM - 4:50 AM<br>4:44 PM - 6:44 PM                               | <b>Good Activity:</b><br>4:06 AM - 6:06 AM<br>5:20 PM - 7:20 PM                          | <b>Good Activity:</b><br>5:23 AM - 7:23 AM<br>5:55 PM - 7:55 PM                               | <b>Good Activity:</b><br>6:41 AM - 8:41 AM<br>6:31 PM - 8:31 PM                             | <b>Good Activity:</b><br>7:59 AM - 9:59 AM<br>7:08 PM - 9:08 PM                             | <b>Good Activity:</b><br>9:14 AM - 11:14 AM<br>7:48 PM - 9:48 PM                             |
| <b>Excellent Activity:</b><br>10:21 AM - 1:21 PM<br>9:50 PM -<br>12:50 AM(n)                  | <b>Excellent Activity:</b><br>10:47 PM(p) -<br>1:47 AM<br>10:49 PM(p) -<br>1:49 AM       | <b>Excellent Activity:</b><br>10:47 PM(p) -<br>1:47 AM<br>11:17 AM - 2:17 PM                  | <b>Excellent Activity:</b><br>11:43 PM(p) -<br>2:43 AM<br>12:13 PM - 3:13 PM                | <b>Excellent Activity:</b><br>12:39 AM - 3:39 AM<br>1:10 PM - 4:10 PM                       | <b>Excellent Activity:</b><br>1:36 AM - 4:36 AM<br>2:07 PM - 5:07 PM                         |
| <b>Day Rating:</b><br>★☆☆☆☆   | <b>Day Rating:</b><br>★★★★☆  | <b>Day Rating:</b><br>★★★★★   | <b>Day Rating:</b><br>★★★★☆   | <b>Day Rating:</b><br>★★★☆☆   | <b>Day Rating:</b><br>☆☆☆☆☆  |

### Fishing Report - Bass Fishing from the Ranger Boat

**Bass Fishing ...** Another beautiful week of late summer weather here on the twin lakes but catching bass, well it's been pretty tough on us. Little current and wind and no clouds to speak of has made fishing a bit tough but persistence beats resistance most of the time and we've managed to be mildly successful. Keeping tabs on the current generation schedule and prime feeding times, we've positioned ourselves on main lake humps on the north end of the lake to find schools of smaller bass. Dragging a shakey head and drop shots 12-14 feet deep has rewarded us with some good numbers, though small in size. Our main lake dock pattern, skipping tubes and flukes, is waning but we've caught enough fish to still mention it in the report. **Top Water ...** This has been a fairly bright spot for us early and late. Watch for surface

action. White bass and largemouth are schooling together and herding baitfish. Prime locations are gravel points at the mouth of the bays.

**Crappie ...** Trolling cranks for crappie has been consistent for our clients this week. Capt. Rich has been trolling SPRO cranks deep 16-19 feet and catching some big blacks and whites. The numbers have been not great but respectable each day.

**White & Yellow bass ...** fishing has been really good for those clients fishing from the pontoon. We're catching some decent fish on the ledges and the mouth of the bays on a Steel Shad blade bait and Ken's Hybrid Spinner but right now live bait is king. Use your electronics to determine what depth the fish are holding and drop a minnow or live shad and hang on. You might have to go thru some bait but the action is great.

**Bluegill ... No Report**

**Catfish ...** fair on the top of the ledges next to deeper water, 20 plus on a Steel Shad blade bait.

## ***Come Fish With Us On the Kick'n Bass Pontoon!***



***Who said girls can't fish ...***

***Carri Haerting from St. Louis caught this big 'ole crappie while fishing from the pontoon and outfished her boys too!***

***Have a Blast on the Kick'n Bass Pontoon. Families and Groups Welcome and Corporate Trips are our Specialty.***

***We appreciate folks with Special Needs. We furnish the rods & reels and lures, clean and package your catch. It's the BEST VALUE on the lake.***

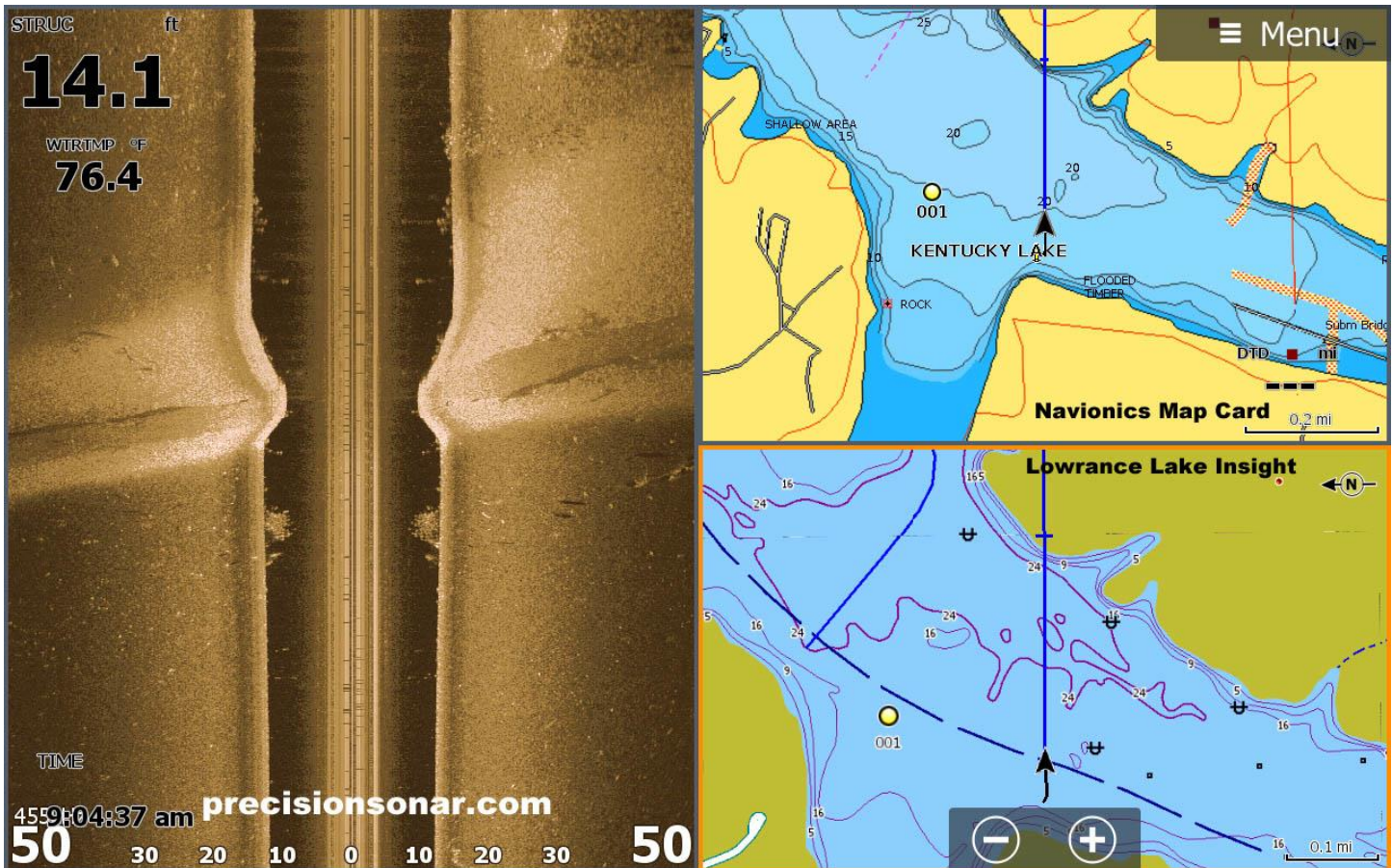
***Book Your Trip NOW!***

***Call 270-703-6133***

# Precision Sonar

## Electronics Tip of the Week

Sonar Accessory website: <http://precisionsonar.com/index.htm>



### Learn To Use an Electronic Topo Map - Navionics vs. Lake Insight

Clients ask me which is better Navionics Mapping or Lake Insight (Lowrance built in mapping)? Each has their own features and benefits and advantages but the biggest asset of having both maps is being able to use them in conjunction with Structurescan to locate areas of importance that would otherwise be missed.

Take the screen shot below for example ... with the Navionics map many landmarks, contours and in this case a road bed, is not shown due to the lake being sounded at winter pool level (5 feet lower than summer pool)

Lake Insight on the other hand identifies the road bed (Blue Line) and displays the boat Icon (Black Arrow) on the road bed. The Structurescan image confirms the location of the road and authenticates the accuracy of the Lake Insight map. Both Maps add value!

Our sonar class is a hands on, in your boat, using your electronics program that will take your sonar ability to the next level. Schedule your personalized "On the Water" Sonar Class and contact [rk@precisionsonar.com](mailto:rk@precisionsonar.com)

## **Here's what some of our clients are saying about Precision Sonar's "On the Water" Sonar Class and their Precision Sonar Mounting Systems ...**

*Wow! What a great class! Now I am armed with a tool that will make a better angler and add to the enjoyment of owning my new boat.*

*Clarence James – Tipp City, OH.*

***Man I loved your new Ranger Boat. Liked driving it too!***

**RK**

*Randy is make no sense at all for someone to spend the amount of money it takes to purchase these sonar systems and not take your class. Also I would highly recommend that anyone considering making a purchase contact you and discuss what his or her thoughts are. It seems there is a lot of disinformation out there these days and your advice concerning my purchase was instrumental in me not only getting what I needed but saved me a lot of money in the process. Thank you very much!!!*

*Philip Fant – Indianapolis, IN*

***Philip, glad it all worked out. Getting the right sonar equipment for the way you fish is real important. Getting the best value for the dollar is too!***

**RK**

### **Remember ...**

*The first step in our "On the Water Sonar Class" is to perform an inspection of your system to make sure the installation has been done to factory specs and all components are installed in the proper location. We'll meet at our Installation and Repair facility and if adjustments are needed we can have them made prior to beginning your class. Doing so assures you that your system will perform at a high level and you'll get the most out of your time on the water.*

**Our service is not an indoor seminar, watching a video on youtube, or looking at a depth finder in a classroom. It's hands on, in your boat using your electronics class that will take your understanding and know-how to another level!**

**IF YOU'RE **CONFUSED, FRUSTRATED, AND NEED ANSWERS** then  
Precision Sonar's "On the Water Sonar Class" is for YOU!**

**Here's just some of what Precision Sonar can do for YOU!**

- Make sure your HDS unit(s) has the correct settings for the type of fishing you do.
- Program the individual screens and install the overlay data on the screen that you want. Example: Depth, Water Temp, Time, etc.
- Arrange the screens so they display what you want them to show and make going from page to page orderly and non-confusing.
- Eliminate unwanted, non-practical on screen data that clutters your screen and gets in the way of using your unit to its maximum potential.
- Learn the art of waypoint management. No more cluttered maps with useless or unproductive waypoints. You'll learn how to identify which locations are waypoint worthy and how to go back to those locations without ever assigning a waypoint. You'll learn to only assign a waypoint once you are satisfied the location is worth saving.
- Demo the unit for you to help you be familiar with the screens and commands, so you'll have a good understanding of how to use the unit and take advantage of its fish finding capabilities.
- Provide you with back up material to keep you on track once the class is over

As a bonus you'll learn to read an electronic topo map and learn how to condense and area to a manageable level and identify those sweet spots that hold fish.

**Check out the PRECISION SONAR Console & Bow mounting systems for your boat at [www.precisionsonar.com](http://www.precisionsonar.com)**

### **Precision Sonar Side by Side Mounting system for earlier Ranger Z Series consoles**



**Don't Miss the Open House at Bass & Gas !!!!**

PHONE  
(270) 527-1900  
WWW.BASSNGAS.COM

**Bass & Gas**  
TACKLE & MORE!

3243 US HIGHWAY 68 EAST  
BENTON, KY 42025

**OPEN HOUSE EVENTS**

**YOUR INVITED!!!**

**Raymarine®**  
BY **FLIR**

**OCTOBER 2-3, 2015**

**FREE SEMINARS  
OVER \$10,000 IN  
GIVEAWAYS / RAFFLES**

**HUMMINBIRD**

**MINN-KOTA**

**OCTOBER 9-10, 2015**

**MEET THE PRO'S  
ON THE WATER DEMOS  
NEW PRODUCT DEMOS  
HUGE PRODUCT DISCOUNTS**

**LOWRANCE®**

**OCTOBER 30-31, 2015**

**FRIDAYS 1PM-6PM  
SATURDAYS 10AM-6PM**



FOR MORE INFORMATION VISIT OUR FACEBOOK PAGE  
[www.facebook.com/bassngas](http://www.facebook.com/bassngas)