



To Book a trip call 270-703-6133 or visit our website

www.kicknbass.net

Sept 18th, 2015

Subscribe to our Fishing report

Over 2500 and growing! Join the growing number of fishermen and women that receive our fishing report weekly. All you have to do is sign up! Click on this link

<http://eepurl.com/-3Sbj>.

Lake Levels ... Current lake level is approximately 3.25 feet below summer pool and on a slow drawdown in accordance with the normal TVA operating schedule. For additional info, including generation schedule for Kentucky Lake, visit the TVA website:

http://www.tva.gov/lakes/kyh_r.htm

Water Clarity and Temperature ... Both lakes have what I would consider ideal water clarity for fishing. The Lowrance temperature probe on my Ranger showed surface water temp at 77 degrees on the main lake with the water warming in the afternoon on sunny days.

Weather Outlook

Friday...Mostly sunny. Highs in the upper 80s. South winds 5 to 10 mph.

Friday Night...Mostly clear. Lows in the upper 60s. South winds around 5 mph.

Saturday...Partly sunny with a 30 percent chance of showers and thunderstorms. Highs in the lower 80s. Southwest winds 5 to 10 mph in the morning shifting to the northwest in the afternoon.

Saturday Night...Partly cloudy. Lows in the upper 50s. North winds 5 to 10 mph.

Sunday...Partly sunny. Highs in the mid 70s.

Sunday Night...Partly cloudy. Lows in the mid 50s.

Monday...Mostly sunny. Highs in the mid 70s.

Monday Night...Mostly clear. Lows in the lower 50s.

Tuesday...Mostly sunny. Highs in the upper 70s.

Tuesday Night...Mostly clear. Lows in the mid 50s.

Wednesday...Mostly sunny. Highs around 80.

Wednesday Night...Mostly clear. Lows in the upper 50s.

Prime Feeding Times for Gilbertsville, KY 42044

18	19	20	21	22	23	24
Sun: Rise: 6:55 AM Transit: 1:08 PM Set: 7:20 PM Moon: Rise: 12:03 PM Transit: 5:08 PM Under Foot: 5:34 AM Set: 10:08 PM Moon Phase: Waxing Crescent 25% Illuminated Good Activity: 11:03 AM - 1:03 PM 9:08 PM - 11:08 PM Excellent Activity: 4:04 AM - 7:04 AM 3:38 PM - 6:38 PM Day Rating: ★☆☆☆☆	Sun: Rise: 6:57 AM Transit: 1:08 PM Set: 7:18 PM Moon: Rise: 1:01 PM Transit: 5:56 PM Under Foot: 6:24 AM Set: 10:49 PM Moon Phase: Waxing Crescent 33% Illuminated Good Activity: 12:01 PM - 2:01 PM 9:49 PM - 11:49 PM Excellent Activity: 4:54 AM - 7:54 AM 4:26 PM - 7:26 PM Day Rating: ★★☆☆☆	Sun: Rise: 6:58 AM Transit: 1:07 PM Set: 7:16 PM Moon: Rise: 1:57 PM Transit: 6:47 PM Under Foot: 7:15 AM Set: 11:36 PM Moon Phase: Waxing Crescent 43% Illuminated Good Activity: 12:57 PM - 2:57 PM 10:36 PM - 12:36 AM(n) Excellent Activity: 5:45 AM - 8:45 AM 5:17 PM - 8:17 PM Day Rating: ★★★☆☆	Sun: Rise: 6:59 AM Transit: 1:07 PM Set: 7:14 PM Moon: Rise: 2:50 PM Transit: 7:39 PM Under Foot: 8:08 AM Set: (s) Moon Phase: First Quarter 54% Illuminated Good Activity: 11:30 PM(p) - 1:30 AM 1:50 PM - 3:50 PM Excellent Activity: 8:38 AM - 9:38 AM 8:09 PM - 9:09 PM Day Rating: ★★☆☆☆	Sun: Rise: 7:01 AM Transit: 1:07 PM Set: 7:12 PM Moon: Rise: 3:39 PM Transit: 8:33 PM Under Foot: 9:03 AM Set: 12:30 AM Moon Phase: Waxing Gibbous 64% Illuminated Good Activity: 11:30 PM(p) - 1:30 AM 2:39 PM - 4:39 PM Excellent Activity: 7:33 AM - 10:33 AM 7:03 PM - 10:03 PM Day Rating: ★☆☆☆☆	Sun: Rise: 7:02 AM Transit: 1:06 PM Set: 7:10 PM Moon: Rise: 4:25 PM Transit: 9:29 PM Under Foot: 9:59 AM Set: 1:31 AM Moon Phase: Waxing Gibbous 74% Illuminated Good Activity: 12:31 AM - 2:31 AM 3:25 PM - 5:25 PM Excellent Activity: 8:29 AM - 11:29 AM 7:59 PM - 10:59 PM Day Rating: ☆☆☆☆☆	Sun: Rise: 7:03 AM Transit: 1:06 PM Set: 7:08 PM Moon: Rise: 5:06 PM Transit: 10:24 PM Under Foot: 10:54 AM Set: 2:38 AM Moon Phase: Waxing Gibbous 84% Illuminated Good Activity: 1:38 AM - 3:38 AM 4:06 PM - 6:06 PM Excellent Activity: 9:24 AM - 12:24 PM 8:54 PM - 11:54 PM Day Rating: ☆☆☆☆☆

Fishing Report - Bass Fishing from the Ranger Boat

Bass Fishing ... Has been very inconsistent for us. Dragging a shakey head and drop shot thru offshore shell beds 12-14 feet deep has rewarded us with some good catches but we've had to resort to several methods to catch fish. Main lake boat docks have produced fair numbers of fish as has top water early and late along deeper banks in the bays and on the east side. Current generation and Prime Feeding Times are paramount these days as the fish are beginning their early fall transition and with the lake levels at a slow draw down fish are definitely scattered and somewhat hard to pattern.

Top Water ... This has been a fairly bright spot for us early and late. Watch for surface action and Blue Herons along the shoreline. They're there for a reason and so are the bass. White bass and largemouth are schooling together and herding baitfish. Prime locations are gravel points at the mouth of the bays.

Crappie ... Trolling cranks for crappie has been consistent for our clients this week. Capt. Rich has been trolling SPRO cranks deep 16-19 feet and catching some big blacks and whites. The numbers have been not great but respectable each day.

White bass ... fishing has been really good for those clients fishing from the pontoon. We're catching some big fish on the ledges and the mouth of the bays on a Steel Shad blade bait and Ken's Hybrid Spinner. ***I'd rate stripe fishing as an B+ or us right now.***

Bluegill ... No Report

Catfish ... fair on the top of the ledges next to deeper water, 20 plus on a Steel Shad blade bait.

Come Fish With Us On the Kick'n Bass Pontoon!



The FMC Boyz from Illinois caught some real nice fish from the Pontoon this week.

Have a Blast on the Kick'n Bass Pontoon. Families and Groups Welcome and Corporate Trips are our Specialty.

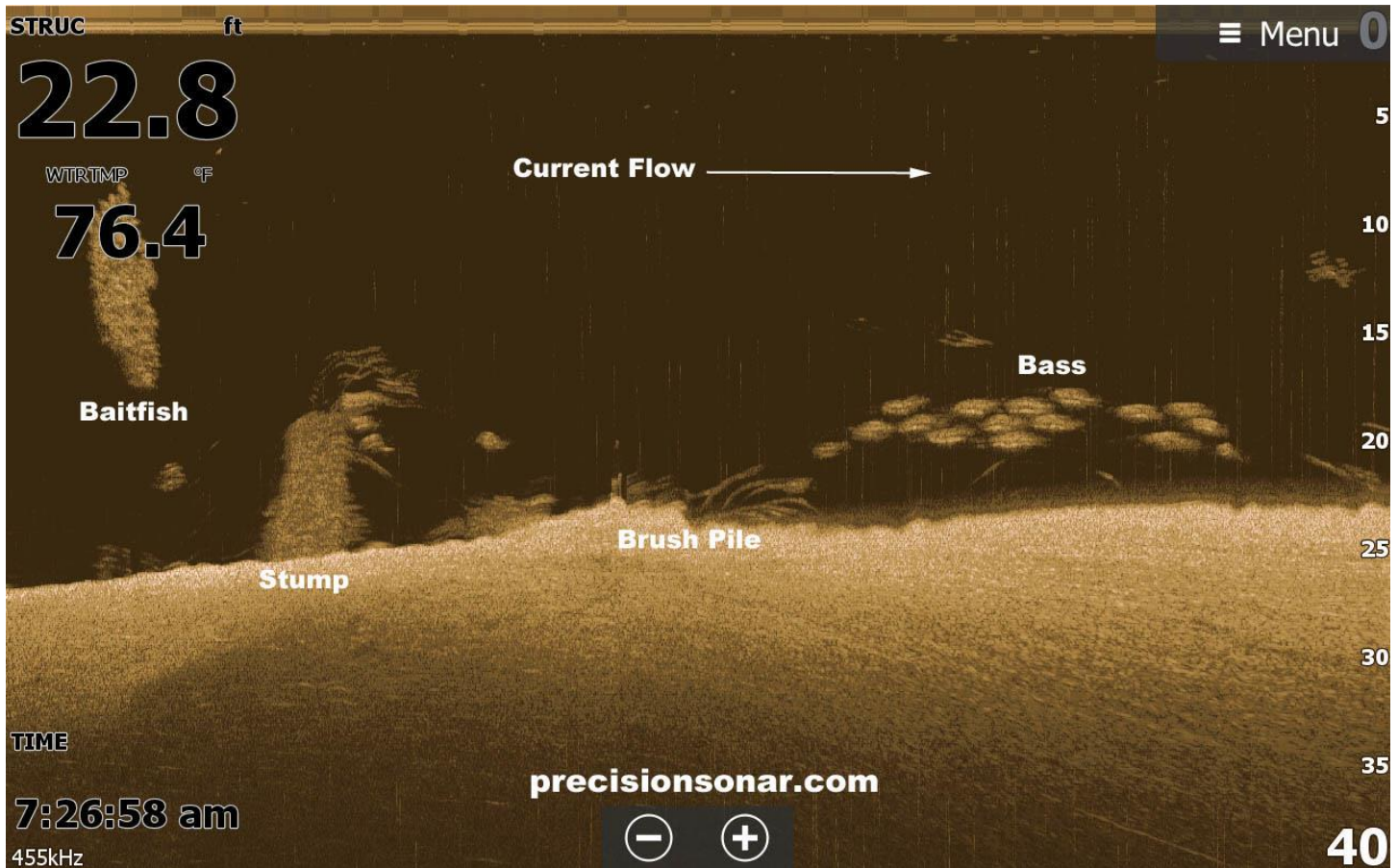
We appreciate folks with Special Needs. We furnish the rods & reels and lures, clean and package your catch. It's the BEST VALUE on the lake.

Book Your Trip NOW! Call 270-703-6133

Precision Sonar

Electronics Tip of the Week

Sonar Accessory website: <http://precisionsonar.com/index.htm>



(Image from HDS 12 Touch & HDI Skimmer Transducer
Mounted on a Minn Kota Fourtrex

Our lakes are in the midst of their annual drawdown and the fall shad migration is starting making game fish difficult to pattern. This is a double whammy for most of us fishermen but while catching fish can be difficult it's not impossible. Our primary targeted fish is the Largemouth Bass. When compared to a Smallmouth Bass or Stripe the physical make up of the Largemouth is not conducive to heavy current ... they like current just not lot's of it. The Largemouth is an ambush predator and will set up on structure or cover that acts as a buffer from the current.

Today we had a rough go of it until I looked at my HDS 12 and saw this image, which shows how the current breaks had the fish positioned. Once I saw this we set up and worked our Steel Shad Blade Baits thru the breaks to catch a real nice bunch of quality fish.

Looking back I wished I had practiced a little more of what I preach in my weekly fishing reports and that is to pay special attention to the Generation Schedules (TVA App) and Prime Feeding Times and then scan for areas that offered current breaks for the bass to set up on.

Good lesson for me...

Our sonar class is a hands on, in your boat, using your electronics program that will take your sonar ability to the next level. Schedule your personalized "On the Water" Sonar Class and contact rk@precisionsonar.com

Here's what some of our clients are saying about Precision Sonar's "On the Water" Sonar Class and their Precision Sonar Mounting Systems ...

Wow! What a great class! I cannot wait to get back home on Lake Erie and use what I've learned. This class is the best thing I have ever done to help my fishing.

Bob Douglas – Hamilton, Ohio

Bob, I know you'll send me your coordinates when you find those sweet spots LOL!

RK

I will admit I was a little skeptical when I heard about your class from a friend but he was pretty insistent on how much it helped him so I figure what the hell I didn't have anything to loose by taking your class. Besides I like fishing KY Lake anyway. I must admit I was more than pleasantly surprised and I must say that the class was everything and more. I didn't realize what I was missing and I bet there are a lot of folks out there just like me that need to take your class.

Donnie Reddington – Lexington, KY.

Ain't it nice when a plan comes together!

RK

Remember ...

The first step in our "On the Water Sonar Class" is to perform an inspection of your system to make sure the installation has been done to factory specs and all components are installed in the proper location. We'll meet at our Installation and Repair facility and if adjustments are needed we can have them made prior to beginning your class. Doing so assures you that your system will perform at a high level and you'll get the most out of your time on the water.

Our service is not an indoor seminar, watching a video on youtube, or looking at a depth finder in a classroom. It's hands on, in your boat using your electronics class that will take your understanding and know-how to another level!

IF YOU'RE **CONFUSED, FRUSTRATED, AND NEED ANSWERS then Precision Sonar's "On the Water Sonar Class" is for YOU!**

Here's just some of what Precision Sonar can do for YOU!

- **Make sure your HDS unit(s) has the correct settings for the type of fishing you do.**
- **Program the individual screens and install the overlay data on the screen that you want. Example: Depth, Water Temp, Time, etc.**
- **Arrange the screens so they display what you want them to show and make going from page to page orderly and non-confusing.**
- **Eliminate unwanted, non-practical on screen data that clutters your screen and gets in the way of using your unit to its maximum potential.**
- **Learn the art of waypoint management. No more cluttered maps with useless or unproductive waypoints. You'll learn how to identify which locations are waypoint worthy and how to go back to those locations without ever assigning a waypoint. You'll learn to only assign a waypoint once you are satisfied the location is worth saving.**
- **Demo the unit for you to help you be familiar with the screens and commands, so you'll have a good understanding of how to use the unit and take advantage of its fish finding capabilities.**
- **Provide you with back up material to keep you on track once the class is over**

As a bonus you'll learn to read an electronic topo map and learn how to condense and area to a manageable level and identify those sweet spots that hold fish.

Check out the **PRECISION SONAR Console & Bow mounting systems for your boat at www.precisionsonar.com**



John Carroll from Leitchfield, KY shows off his 2016 Legend V-20 with Custom Graphics and Precision Sonar Console Mounting system and Lowrance HDS 12 Touch.