



To Book a trip call 270-703-6133 or visit our website
www.kicknbass.net

Sept 11th, 2015

Subscribe to our Fishing report

Over 2500 and growing! Join the growing number of fishermen and women that receive our fishing report weekly. All you have to do is sign up! Click on this link
<http://eepurl.com/-3Sbj>.

Lake Levels ... Current lake level is approximately 3 feet below summer pool and on a slow drawdown in accordance with the normal TVA operating schedule. For additional info, including generation schedule for Kentucky Lake, visit the TVA website:
http://www.tva.gov/lakes/kyh_r.htm

Water Clarity and Temperature ... Both lakes have what I would consider ideal water clarity for fishing. The Lowrance temperature probe on my Ranger showed surface water temp at 79.6 degrees on the main lake with the water warming in the afternoon on sunny days.

Weather Outlook

Friday Night...Partly cloudy. A 20 percent chance of showers in the evening. Lows in the mid 50s. Northwest winds 5 to 10 mph.

Saturday...Partly sunny with isolated showers. Highs around 70. North winds 5 to 10 mph. Chance of precipitation 20 percent.

Saturday Night...Mostly clear. Lows in the upper 40s. Northwest winds 5 to 10 mph.

Sunday...Mostly sunny. Highs in the lower 70s.

Sunday Night...Mostly clear. Lows in the upper 40s.

Monday...Mostly sunny. Highs in the upper 70s.

Monday Night...Clear. Lows in the mid 50s.

Tuesday...Mostly sunny. Highs in the lower 80s.

Tuesday Night...Mostly clear. Lows in the lower 60s.

Prime Feeding Times for Gilbertsville, KY 42044

11	12	13	14	15	16	17
Sun: Rise: 6:47 AM Transit: 1:11 PM Set: 7:34 PM Moon: Rise: 5:11 AM Transit: 12:03 PM Under Foot: 12:27 AM Set: 6:46 PM Moon Phase: Waning Crescent 2% Illuminated Good Activity: 4:11 AM - 6:11 AM 5:46 PM - 7:46 PM Excellent Activity: 10:57 PM(p) - 1:57 AM 10:33 AM - 1:33 PM Day Rating: ★★☆☆☆☆	Sun: Rise: 6:48 AM Transit: 1:10 PM Set: 7:32 PM Moon: Rise: 6:11 AM Transit: 12:46 PM Under Foot: 1:09 AM Set: 7:13 PM Moon Phase: Waning Crescent 0% Illuminated Good Activity: 5:11 AM - 7:11 AM 6:13 PM - 8:13 PM Excellent Activity: 11:39 PM(p) - 2:39 AM 11:16 AM - 2:16 PM Day Rating: ★★★★★★	Sun: Rise: 6:49 AM Transit: 1:10 PM Set: 7:30 PM Moon: Rise: 7:10 AM Transit: 1:29 PM Under Foot: 1:52 AM Set: 7:39 PM Moon Phase: New Moon 0% Illuminated Good Activity: 6:10 AM - 8:10 AM 6:39 PM - 8:39 PM Excellent Activity: 12:22 AM - 3:22 AM 11:59 AM - 2:59 PM Day Rating: ★★★★★★	Sun: Rise: 6:50 AM Transit: 1:09 PM Set: 7:28 PM Moon: Rise: 8:08 AM Transit: 2:11 PM Under Foot: 2:34 AM Set: 8:06 PM Moon Phase: Waxing Crescent 2% Illuminated Good Activity: 7:08 AM - 9:08 AM 7:06 PM - 9:06 PM Excellent Activity: 1:04 AM - 4:04 AM 12:41 PM - 3:41 PM Day Rating: ★★★☆☆☆	Sun: Rise: 6:52 AM Transit: 1:09 PM Set: 7:26 PM Moon: Rise: 9:07 AM Transit: 2:53 PM Under Foot: 3:17 AM Set: 8:33 PM Moon Phase: Waxing Crescent 5% Illuminated Good Activity: 8:07 AM - 10:07 AM 7:33 PM - 9:33 PM Excellent Activity: 1:47 AM - 4:47 AM 1:23 PM - 4:23 PM Day Rating: ★★☆☆☆☆	Sun: Rise: 6:53 AM Transit: 1:09 PM Set: 7:24 PM Moon: Rise: 10:06 AM Transit: 3:37 PM Under Foot: 4:01 AM Set: 9:01 PM Moon Phase: Waxing Crescent 10% Illuminated Good Activity: 9:06 AM - 11:06 AM 8:01 PM - 10:01 PM Excellent Activity: 2:31 AM - 5:31 AM 2:07 PM - 5:07 PM Day Rating: ☆☆☆☆☆☆	Sun: Rise: 6:54 AM Transit: 1:08 PM Set: 7:22 PM Moon: Rise: 11:05 AM Transit: 4:21 PM Under Foot: 4:47 AM Set: 9:33 PM Moon Phase: Waxing Crescent 17% Illuminated Good Activity: 10:05 AM - 12:05 PM 8:33 PM - 10:33 PM Excellent Activity: 3:17 AM - 6:17 AM 2:51 PM - 5:51 PM Day Rating: ☆☆☆☆☆☆
18	19					

Fishing Report - Bass Fishing from the Ranger Boat

Bass Fishing ... Has been very inconsistent for us. Dragging a shakey head and drop shot thru offshore shell beds 12-14 feet deep has rewarded us with some good catches but we've had to resort to several methods to catch fish. Main lake boat docks have produced fair numbers of fish as has top water early and late along deeper banks in the bays and on the east side. Current generation and Prime Feeding Times are paramount these days as the fish are beginning their early fall transition and with the lake levels at a slow draw down fish are definitely scattered and somewhat hard to pattern.

Dock Pattern ... With the water being drawn down this pattern is still good enough to talk about it. Using spinning gear with 6lb line and a Zman ZINKERZ (*Senko type lure*) casting WACKY style, we caught some fish around boat docks especially those adjacent deeper creeks. The ElaZtech construction makes the ZinkerZ the most durable stick bait on the market and it's loaded with salt so it sinks at a controlled, slow rate when rigged weightless. The tough material allows you to wacky rig without the use of O-rings or other devices. With the young of the year fry approaching 1-2 inches the larger shad and bluegill are having a field day and the bass are taking advantage of the shad and bluegill. **When things slow up or you can't fish where you want boat docks are a good way to go.**

Top Water ... This has been a fairly bright spot for us early and late. Watch for surface action and Blue Herons along the shoreline. They're there for a reason and so are the bass. White bass and largemouth are schooling together and herding baitfish. Prime locations are gravel points at the mouth of the bays.

Crappie ... Trolling cranks for crappie has been consistent for our clients this week. Capt. Rich has been trolling SPRO cranks deep 16-19 feet and catching some big blacks and whites. The numbers have been not great but respectable each day.

White bass ... fishing has been really good for those clients fishing from the pontoon. We're catching some big fish on the ledges and the mouth of the bays on a Steel Shad blade bait and Ken's Hybrid Spinner. ***I'd rate stripe fishing as an B+ or us right now.***

Bluegill ... No Report

Catfish ... fair on the top of the ledges next to deeper water, 20 plus on a Steel Shad blade bait.

Come Fish With Us On the Kick'n Bass Pontoon!



The Lockett Boys and friends got some nice cats and stripes and the Peaslee boys from Detroit caught some real nice white bass on fishing from the Pontoon

Have a Blast on the Kick'n Bass Pontoon. Families and Groups Welcome and Corporate Trips are our Specialty.

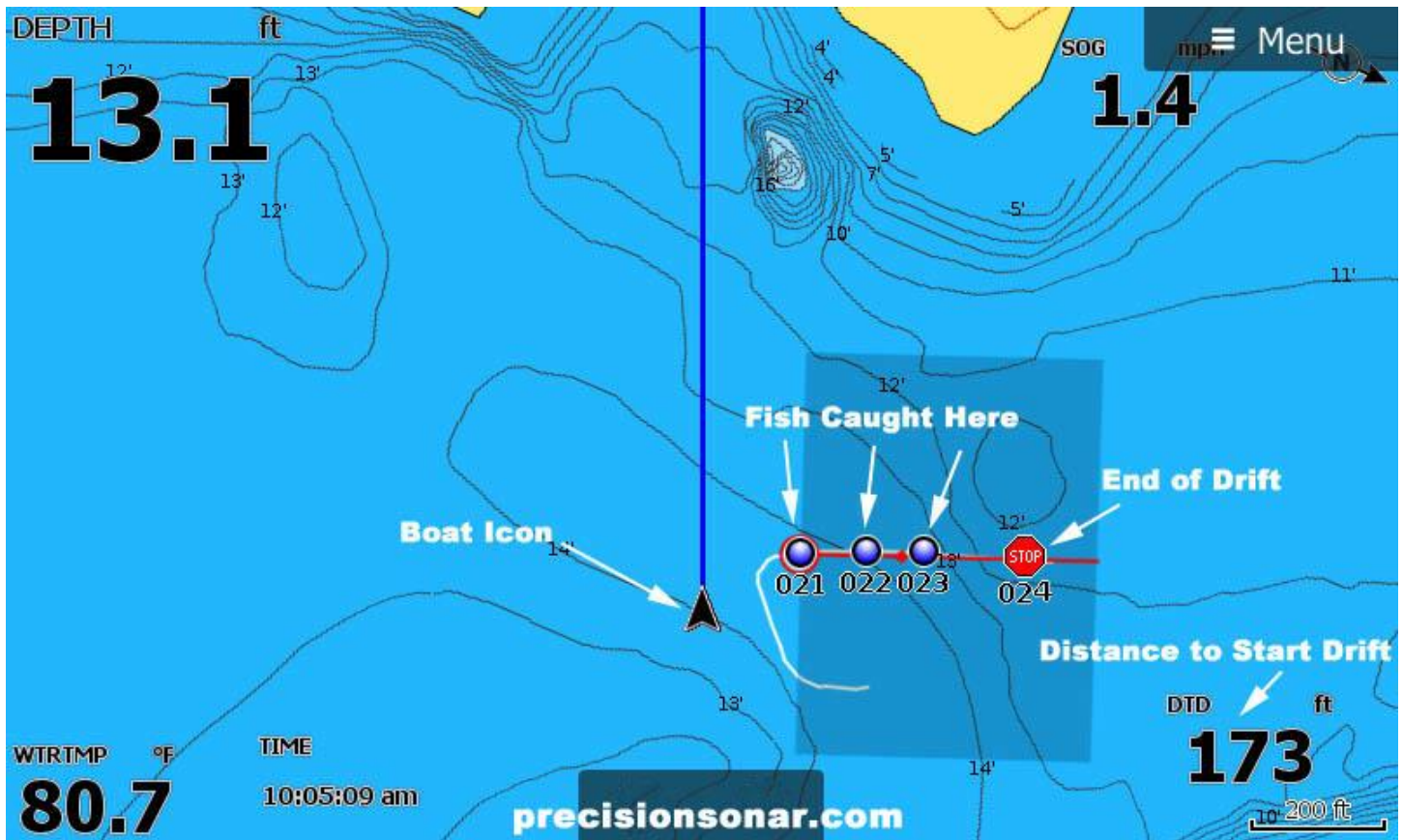
We appreciate folks with Special Needs. We furnish the rods & reels and lures, clean and package your catch. It's the BEST VALUE on the lake.

Book Your Trip NOW! Call 270-703-6133

Precision Sonar

Electronics Tip of the Week

Sonar Accessory website: <http://precisionsonar.com/index.htm>



One of the really neat processes you will learn in our sonar class is how to use your Trails function and Waypoint management system to develop a "Drift Line" to maximize boat control in high percentage areas. Once the "Drift Line" is established, one can position the boat and follow a defined Trail and set of Waypoints to track a course through productive water, mark your catch and return to fish the area again. There are times when I've seen this practice be the absolute best way to catch numbers of fish.

Our sonar class is a hands on, in your boat, using your electronics program that will take your sonar ability to the next level. Schedule your personalized "On the Water" Sonar Class and contact rk@precisionsonar.com

Here's what some of our clients are saying about Precision Sonar's "On the Water" Sonar Class and their Precision Sonar Mounting Systems ...

This is the definite place to learn either the basics or advanced techniques utilizing your sonar equipment. Randy is VERY patient and puts it all into simple terms you can understand. He also may make other suggestions to improve the efficiency and convenience of utilizing your boat. I am far more confident using my systems than I was before.

Ronald E. Whitford, DVM

I didn't used to be so patient but as I've gotten older I have learned that Patience is both an asset and an advantage! I've learned that from my good customers like you.

RK

Be sure to attend Randy's On-The-Water Sonar class. You have no idea how little you do know about your sonar until you take his class. Thanks Randy.

Dan "the Electric Man" Edington

Yeah but when the lights go out I'll be calling you ... so you've still got one up on me, brother! LOL!

RK

Remember ...

The first step in our "On the Water Sonar Class" is to perform an inspection of your system to make sure the installation has been done to factory specs and all components are installed in the proper location. We'll meet at our Installation and Repair facility and if adjustments are needed we can have them made prior to beginning your class. Doing so assures you that your system will perform at a high level and you'll get the most out of your time on the water.

Our service is not an indoor seminar, watching a video on youtube, or looking at a depth finder in a classroom. It's hands on, in your boat using your electronics class that will take your understanding and know-how to another level!

IF YOU'RE **CONFUSED, FRUSTRATED, AND NEED ANSWERS then Precision Sonar's "On the Water Sonar Class" is for YOU!**

Here's just some of what Precision Sonar can do for YOU!

- **Make sure your HDS unit(s) has the correct settings for the type of fishing you do.**
- **Program the individual screens and install the overlay data on the screen that you want. Example: Depth, Water Temp, Time, etc.**

- Arrange the screens so they display what you want them to show and make going from page to page orderly and non-confusing.
- Eliminate unwanted, non-practical on screen data that clutters your screen and gets in the way of using your unit to its maximum potential.
- Learn the art of waypoint management. No more cluttered maps with useless or unproductive waypoints. You'll learn how to identify which locations are waypoint worthy and how to go back to those locations without ever assigning a waypoint. You'll learn to only assign a waypoint once you are satisfied the location is worth saving.
- Demo the unit for you to help you be familiar with the screens and commands, so you'll have a good understanding of how to use the unit and take advantage of its fish finding capabilities.
- Provide you with back up material to keep you on track once the class is over

As a bonus you'll learn to read an electronic topo map and learn how to condense and area to a manageable level and identify those sweet spots that hold fish.

Check out the **PRECISION SONAR Console & Bow mounting systems for your boat at www.precisionsonar.com**



2014 Skeeter ZX with Precision Sonar Smart Bracket Console Mounting System

*Precision Sonar makes an awesome product!! Fits like a glove, raised the unit up to the right height and built to hold up in the worst possible conditions. Exactly what I needed, thank you
Lane Masters – Fisher, LA.*

I am a Electronics Training Guide on Lake Fork in Texas. Bottom line this mount is absolutely awesome. A quality product and a world class company. Thank you Randy!

Slade Dougharty – Lake Fork Texas