



To Book a trip call 270-703-6133 or visit our website

www.kicknbass.net

July 24, 2015

Subscribe to our Fishing report

Over 2500 and growing! Join the growing number of fishermen and women that receive our fishing report weekly. All you have to do is sign up! Click on this link

<http://eepurl.com/-3Sbj>.

Lake Levels ... Current lake level is right at summer pool. Barring any major influx of water from the south, expect within a few days for the lake to begin to drop slowly in accordance with the normal TVA operating schedule. For additional info, including generation schedule for Kentucky Lake, visit the TVA website: http://www.tva.gov/lakes/kyh_r.htm

Water Clarity and Temperature ... Both lakes have what I would consider ideal water clarity for fishing. The Lowrance temperature probe on my Ranger showed water temps ranging from 86 degrees on the main lake and 88 in the bays with water warming in the afternoon on sunny days.

Weather Outlook

Friday...Mostly sunny. Areas of fog in the morning. Highs in the upper 80s. North winds 5 mph.

Friday Night...Clear. Lows in the upper 60s. Northeast winds 5 mph in the evening becoming calm after midnight.

Saturday...Mostly sunny with a 20 percent chance of showers and thunderstorms. Highs in the lower 90s. Calm winds in the morning becoming east 5 mph in the afternoon.

Saturday Night...Mostly clear. Lows in the lower 70s. East winds 5 mph in the evening becoming calm after midnight.

Sunday...Partly sunny. Highs in the lower 90s.

Sunday Night...Partly cloudy. Lows in the mid 70s.

Monday...Partly sunny with a 20 percent chance of showers and thunderstorms. Highs in the mid 90s.

Monday Night...Mostly clear. Lows in the mid 70s.

Prime Feeding Times for Gilbertsville, KY 42044

24	25	26	27	28	29	30
Sun: Rise: 5:46 AM Transit: 1:20 PM Set: 8:54 PM Moon: Rise: 2:25 PM Transit: 7:44 PM Under Foot: 8:10 AM Set: 12:27 AM Moon Phase: Waxing Gibbous 55% Illuminated Good Activity: 11:27 PM(p) - 1:27 AM 1:25 PM - 3:25 PM Excellent Activity: 6:40 AM - 9:40 AM 6:14 PM - 9:14 PM Day Rating: ★☆☆☆☆	Sun: Rise: 5:47 AM Transit: 1:20 PM Set: 8:53 PM Moon: Rise: 3:25 PM Transit: 8:32 PM Under Foot: 8:59 AM Set: 12:58 AM Moon Phase: Waxing Gibbous 65% Illuminated Good Activity: 11:58 PM(p) - 1:58 AM 2:25 PM - 4:25 PM Excellent Activity: 7:29 AM - 10:29 AM 7:02 PM - 10:02 PM Day Rating: ★☆☆☆☆	Sun: Rise: 5:48 AM Transit: 1:20 PM Set: 8:52 PM Moon: Rise: 4:26 PM Transit: 9:22 PM Under Foot: 9:51 AM Set: 1:34 AM Moon Phase: Waxing Gibbous 74% Illuminated Good Activity: 12:34 AM - 2:34 AM 3:26 PM - 5:26 PM Excellent Activity: 8:21 AM - 11:21 AM 7:52 PM - 10:52 PM Day Rating: ★☆☆☆☆	Sun: Rise: 5:49 AM Transit: 1:20 PM Set: 8:51 PM Moon: Rise: 5:25 PM Transit: 10:15 PM Under Foot: 10:45 AM Set: 2:15 AM Moon Phase: Waxing Gibbous 83% Illuminated Good Activity: 1:15 AM - 3:15 AM 4:25 PM - 6:25 PM Excellent Activity: 9:15 AM - 12:15 PM 8:45 PM - 11:45 PM Day Rating: ★☆☆☆☆	Sun: Rise: 5:50 AM Transit: 1:20 PM Set: 8:50 PM Moon: Rise: 6:22 PM Transit: 11:10 PM Under Foot: 11:41 AM Set: 3:04 AM Moon Phase: Waxing Gibbous 90% Illuminated Good Activity: 2:04 AM - 4:04 AM 5:22 PM - 7:22 PM Excellent Activity: 10:11 AM - 1:11 PM 9:40 PM - 12:40 AM(n) Day Rating: ☆☆☆☆☆	Sun: Rise: 5:51 AM Transit: 1:20 PM Set: 8:49 PM Moon: Rise: 7:14 PM Transit: (t) Under Foot: 12:10 AM Set: 4:00 AM Moon Phase: Waxing Gibbous 96% Illuminated Good Activity: 3:00 AM - 5:00 AM 6:14 PM - 8:14 PM Excellent Activity: 10:38 PM(p) - 1:38 AM 10:40 PM(p) - 1:40 AM Day Rating: ★★★☆☆	Sun: Rise: 5:53 AM Transit: 1:20 PM Set: 8:47 PM Moon: Rise: 8:01 PM Transit: 12:08 AM Under Foot: 12:38 PM Set: 5:05 AM Moon Phase: Waxing Gibbous 99% Illuminated Good Activity: 4:05 AM - 6:05 AM 7:01 PM - 9:01 PM Excellent Activity: 10:38 PM(p) - 1:38 AM 11:08 AM - 2:08 PM Day Rating: ★★★★☆

Fishing Report



Ledges and main lake points are once again holding bass and we're catching them on Shakeyheads, Spoons, Steel Shad Blade Baits and Hair Jigs and some real nice fish are being

caught like the ones (*Photo L*) Frank Haysley from Louisville and Gene Huber from Missouri caught this week.

The Topwater bite is good early and late on Spooks, SPRO McStick jerk baits and buzz baits fished in the back of the bays where any shoreline weed growth is present.

With the shad and fry lingering around boat docks, ones with spud poles are holding the majority of the bass. A lot it seems but they are mostly in the 12-15 inch class. Topwater has worked, so has slow-rolling a curly Tail grub . The dock fish are fairly aggressive.

Stripes (White and Yellow Bass) White bass are beginning to show up in decent numbers and Yellows are too. And they're mixed in with some nice cats too! Casting a **Steel Shad Blade Bait** has been our best bet on the ledges where we're finding decent schools of whites suspending off the main drops in 12-18 feet of water. Try ripping the bait off the bottom and them abruptly stop it and let it flutter to the bottom. Some of our best catches have been on the fall.

Crappie Fishing ... Mixed results number wise but really big fish. Trolling cranks is beginning to be a serious factor off the points and ledges where some big whites and blacks are being caught. This best bite seems to be best on sunny days. This is a really cool way to fish and have fun.

Catfish ... catfishing is the best it's been in years for sure and on just about any live bait you want to use. A big juicy nite crawler would be my choice but a lot of the bait shops have a great assortment of catfish baits and tackle. Captain Rich has been loading the boat all week and some BIG ONES too on a Steel Shad Blade Bait!

Try Kick'n Bass Pontoon Fishing Adventures



(Photo L) John, Henry and Lucy Mathis from Kentucky and the Chad Sidmonds Group (Photo R) with some real nice catfish caught fishing Steel Shad Blade Baits from the pontoon.

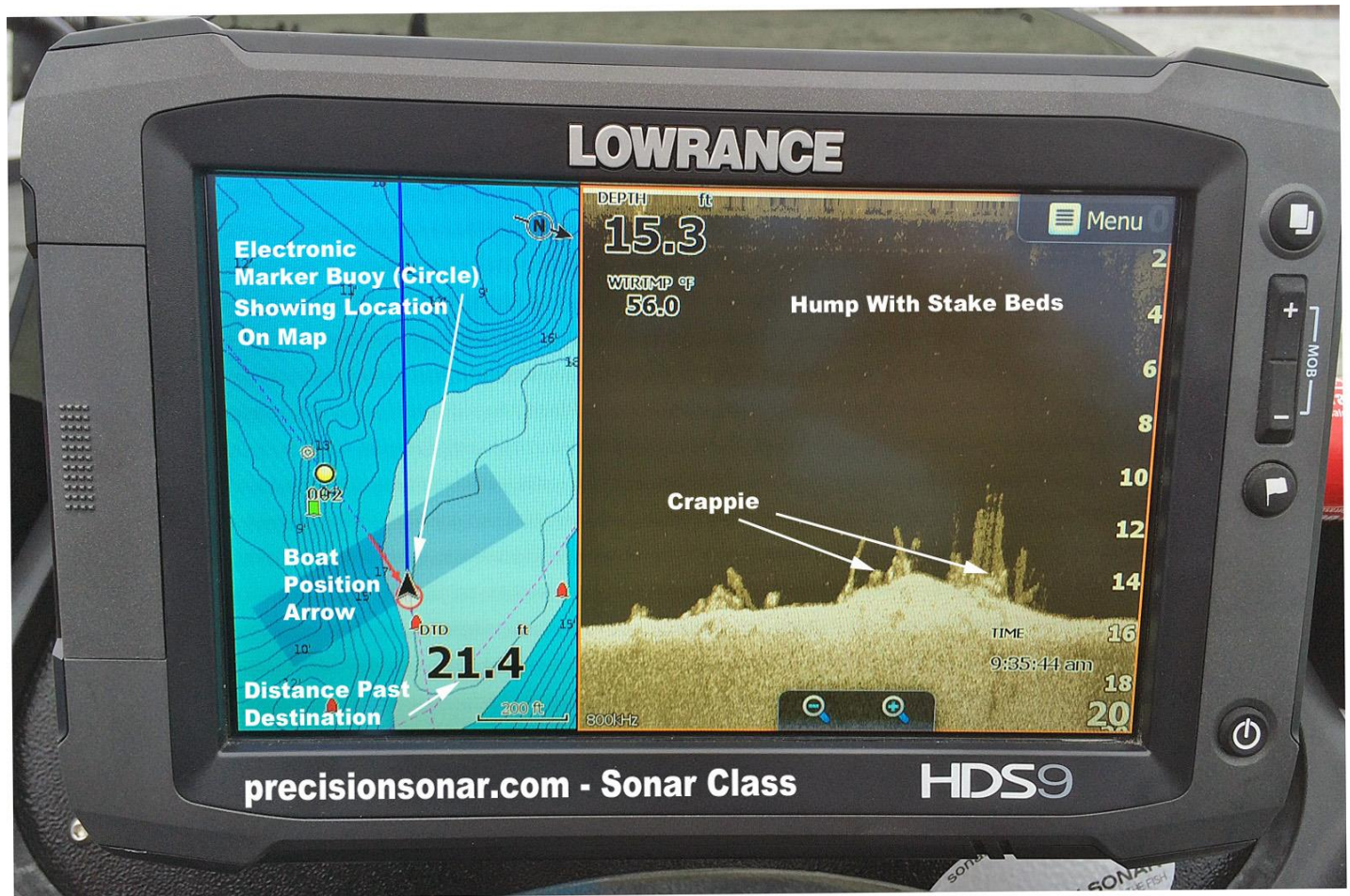
Have a Blast on the Kick'n Bass Pontoon. Families and Groups Welcome and Corporate Trips are our Specialty. We appreciate folks with Special Needs. We furnish the rods & reels and lures, clean and package your catch. It's the BEST VALUE on the lake. Book Your Trip NOW!

Call 270-703-6133

Precision Sonar

Electronics Tip of the Week

Sonar Accessory website: <http://precisionsonar.com/index.htm>



Finding, Marking and Going Back to cast to the fish makes a lot of sense doesn't it? This screen allows you to pinpoint fish location and use the "Go To Track Back" Function to go back to the fish. Want to find out more? Our sonar class is a hands on, in your boat, using your electronics program developed to take your sonar ability to the next level. Schedule your personalized "On the Water" Sonar Class and contact rk@precisionsonar.com

***Here's what some of our clients are saying about
Precision Sonar's "On the Water" Sonar Class and their
Precision Sonar Mounting Systems ...***



*Randy thanks again for the class. I enjoyed it and learned a lot.
Brian Mulrooney ...*

***I'll say ... looks like you and
your nephew found some honey
holes Too!***

RK

*The class was fun and easy. I have
a lot more confidence in my system
now and me being able to use it.*

Fred Davis - St. Louis, Mo.

***You made the class easy for me. It's nice when someone comes prepared to learn like
you did.***

RK

*Thanks for all the advice on setting up my system and I
love the Precision Sonar Console Mount. I'm having a
lot of fun these days on the water thanks to your class.*

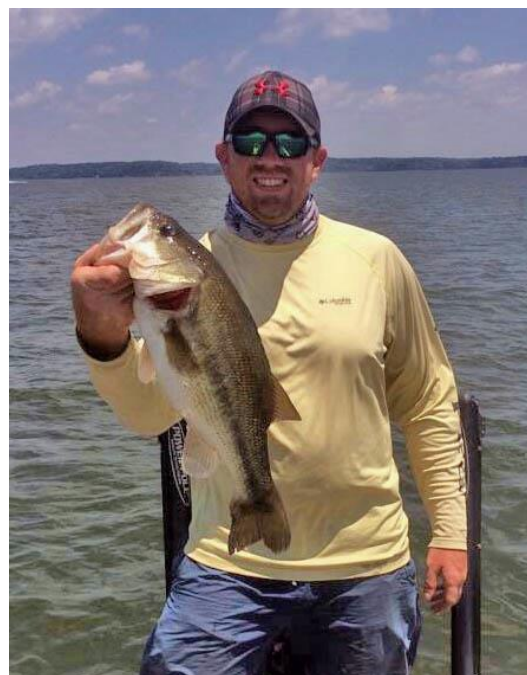
Pete Rudolph – North Carolina

***Glad to have helped out and we sincerely
appreciate your business!***

RK

Remember ...

*The first step in our "On the Water Sonar Class" is to
perform an inspection of your system to make sure the
installation has been done to factory specs and all*



components are installed in the proper location. We'll meet at our Installation and Repair facility and if adjustments are needed we can have them made prior to beginning your class. Doing so assures you that your system will perform at a high level and you'll get the most out of your time on the water.

Our service is not an indoor seminar, watching a video on youtube, or looking at a depth finder in a classroom. It's hands on, in your boat using your electronics class that will take your understanding and know-how to another level!

IF YOU'RE **CONFUSED, FRUSTRATED, AND NEED ANSWERS then Precision Sonar's "On the Water Sonar Class" is for YOU!**

Here's just some of what Precision Sonar can do for YOU!

- **Make sure your HDS unit(s) has the correct settings for the type of fishing you do.**
- **Program the individual screens and install the overlay data on the screen that you want. Example: Depth, Water Temp, Time, etc.**
- **Arrange the screens so they display what you want them to show and make going from page to page orderly and non-confusing.**
- **Eliminate unwanted, non-practical on screen data that clutters your screen and gets in the way of using your unit to its maximum potential.**
- **Learn the art of waypoint management. No more cluttered maps with useless or unproductive waypoints. You'll learn how to identify which locations are waypoint worthy and how to go back to those locations without ever assigning a waypoint. You'll learn to only assign a waypoint once you are satisfied the location is worth saving.**
- **Demo the unit for you to help you be familiar with the screens and commands, so you'll have a good understanding of how to use the unit and take advantage of its fish finding capabilities.**
- **Provide you with back up material to keep you on track once the class is over**

As a bonus you'll learn to read an electronic topo map and learn how to condense and area to a manageable level and identify those sweet spots that hold fish.

Be sure and check out the **PRECISION SONAR Console & Bow mounting systems for your boat at www.precisionsonar.com**



Precision Sonar U-Bracket Bow Mount & Replacement Panel on a Ranger C Series boat.