



**To Book a trip call 270-703-6133 or visit our website**

**[www.kicknbass.net](http://www.kicknbass.net)**

**May 29 2015**

### **Subscribe to our Fishing report**

Over 2500 and growing! Join the growing number of fishermen and women that receive our fishing report weekly. All you have to do is sign up! Click on this link

<http://eepurl.com/-3Sbj>

### **Lake Conditions**

**Lake Levels ...** The water levels have been fluctuating between summer pool and about a foot over pool the last few days. As an example in the mornings the lake will be up and by nite fall close to pool level. This can only mean one thing that there's good current in the lake which means good fishing. For additional info, including generation schedule for Kentucky Lake, visit the TVA website: [http://www.tva.gov/lakes/kyh\\_r.htm](http://www.tva.gov/lakes/kyh_r.htm)

**Water Clarity and Temperature ...** Both lakes have what I would consider as ideal water clarity for fishing. The Lowrance temperature probe on my Ranger showed water temps ranging from 73 degrees on the main lake and 75 in the bays with water warming in the afternoon on sunny days.

### **Weather Outlook**

**Friday...**Partly sunny with a 50 percent chance of showers and thunderstorms. Highs in the lower 80s. South winds 5 to 10 mph.

**Friday Night...**Mostly cloudy with a 50 percent chance of showers and thunderstorms. Lows in the upper 60s. South winds around 5 mph.

**Saturday...**Showers and thunderstorms likely. Highs around 80. Southwest winds 5 to 10 mph. Chance of precipitation 70 percent.

**Saturday Night...**Showers and thunderstorms likely. Lows in the mid 60s. West winds 5 mph. Chance of precipitation 70 percent.

**Sunday...**Showers and thunderstorms likely. Highs in the mid 70s. Chance of precipitation 60 percent.

**Sunday Night...**Cloudy with a 50 percent chance of showers and thunderstorms. Lows in the lower 60s.

**Monday...**Mostly cloudy with a 50 percent chance of showers and thunderstorms. Highs in the mid 70s.

**Monday Night...**Mostly cloudy with a 50 percent chance of showers and thunderstorms. Lows in the lower 60s.

## Prime Feeding Times for Gilbertsville, KY 42044

Primary Feeding Times

May 2015

Month:


May

Year:

2015


Go

Phases:




May 4

Full Moon




May 11

Last Quarter



May 18

New Moon



May 25

First Quarter

Date (CDT)	Morning		Evening	
	Minor	Major	Minor	Major
29	2:28AM	8:28AM	3:34PM	8:50PM
30	3:01AM	9:13AM	4:32PM	9:36PM
31	3:36AM	10:00AM	5:29PM	10:25PM
1	4:17AM	10:50AM	6:28PM	-----
2	5:02AM	11:16PM	7:25PM	11:42AM
3	5:51AM	12:09AM	8:21PM	12:36PM
4	6:47AM	1:04AM	9:14PM	1:32PM
5	7:47AM	1:59AM	10:02PM	2:27PM

## Fishing Report

**Bass Fishing ...** Offshore fishing has really come into it's own this week with good numbers and large fish being taken. With steady current in the lake, as each day progresses we are seeing more fish heading towards the ledges. However, a lot of fish are still in the bays, especially at the mouth of the bays.



Two methods have worked equally well. One technique that has gained momentum with my clients and I is dragging a 6" Blueback Herring ZMan swimmerZ (A swimbait type lure) on a PJ's freestyle football head jig. The ElaZtech material keeps the shad imitator floating tail up while the jig keeps the bait nose down while lifelike action is achieved as the freestyle hook allows the swimbait to move back & forth. As the jig is dragged across the bottom silt is kicked up and the SwimmerZ gives the appearance of a large shad feeding on the bottom. Our heaviest fish have come with on this bait.

ZMan finesse worms fished Shakey Head style using a PJ's Bass extractor Jig with a special wire keeper to keep the worm snug against the jig head has been an absolute killer for numbers of



fish on the ledges. We used Shimano Crucial & Cumara Shakey Head rods and Shimano ci4 reels spooled with Power Pro yellow 10lb. braid and a 10lb 100% fluorocarbon leader. This set up gives you the feel, castability and strength without the weight to fish all day long and fight some real good fish. Besides, it's just plain fun to fish this way. If you haven't tried this combination then you don't know what you're missing. If you're in the KY Lakes area see Rhonda at Bass & Gas on Hwy 68 and she'll show you the right equipment. Carolina rigged lizards and slow rolling 8" swim baits on main lake ledges has produced some fish.

*(Photo) Frank Haysley from Louisville with a good one.*

### **Bluegill & Redear Fishing**

Fishing for both species been good this week. Some nice redear are showing up with regularity and "Bull" bluegills are plentiful as the spawn is in full force. We're looking for another wave of spawners to come on shortly as the full moon of June approaches. We're finding new beds daily.

Using Shelton's Bluegill bug with and without a cricket we did some serious damage on the bluegill and redear populations. Fishing a cricket under an ESB slip bobber was a strong second. The redear seem to be bedding slightly deeper than last year and aren't as plentiful so if you don't find them real shallow keep this in mind. Calm areas 5-6 feet deep with sandy gravel banks are prime areas to find these bedding fish.

### ***Everlasting Slip Bobbers ... not just your ordinary slip bobber!***



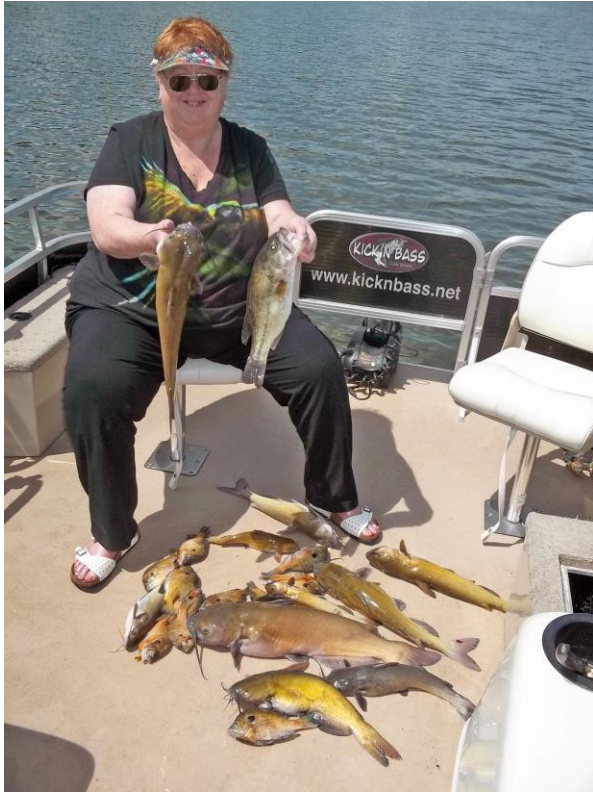
Choosing the right slip bobber is just as important as having the right rod & reel and line. **ESB** bobbers have several advantages that will help you catch more fish and keep rigging time to a minimum. As an example every **ESB** bobber comes with a highly polished glass bead that is molded into the top of the tube. No more loose beads to deal with! The high polished bead *won't* cut fishing line and reduced line friction allows the line to flow smoothly increasing casting distance and accuracy, plus the bait gets to the fish much faster than

an ordinary slip float. The bottom end of the tube is protected by a brass guard so the tube itself won't become worn and fray your line. The tube is made of a clear synthetic material that won't swell, split or rot plus you can see your line coming thru the tube when you're rigging up. **ESB** bobbers come in assorted sizes for bluegill to big catfish and in an array colors, plus each bobber comes *with a slip knot*. What could be better! No more frayed lines and loose beads rolling around on the floor, they cast like a dream and everything you need to rig up comes in one neat little package. ESB Bobbers are the only slip bobbers Kick'n Bass uses. (***ESB** bobbers are available at the tackle shops around the Kentucky Lake area or you can order them online at <http://www.hloutdoors.com>* )



## Crappie Fishing ...

The results have been about the same as last week. Mixed results number wise but really big fish. Trolling cranks is beginning to be a serious factor off the points and ledges where some big whites and blacks are being caught. This best bite seems to be best on sunny days. This is a really cool way to fish and have fun.



**Catfish ...** catfishing is very good on just about any live bait you want to use. A big juicy nite crawler would be my choice but a lot of the bait shops have a great assortment of catfish baits and tackle. Bass & Gas on HWY 68 has a real nice assortment of tackle and baits for catfishing. Captain Rich has been loading the boat all week. *Deb Austin (Photo) caught the big one this week fishing from the Kick'n Bass Pontoon and it was a real good fight but Deb won out! Way to go Deb!!!.*

## Pontoon Fishing Adventures

***Have a Blast on the Kick'n Bass Pontoon. Families and Groups Welcome and Corporate Trips are our Specialty. We appreciate folks with Special Needs.***



*The Randy Rinearson group (Photo Left) caught a mixed bag of crappie, catfish, Redear and Bluegill fishing from the Kick'n Bass Pontoon. Hey Randy when are we having the fish fry ????*

***We furnish the rods & reels and lures, clean and package your catch. It's the BEST VALUE on the lake.***

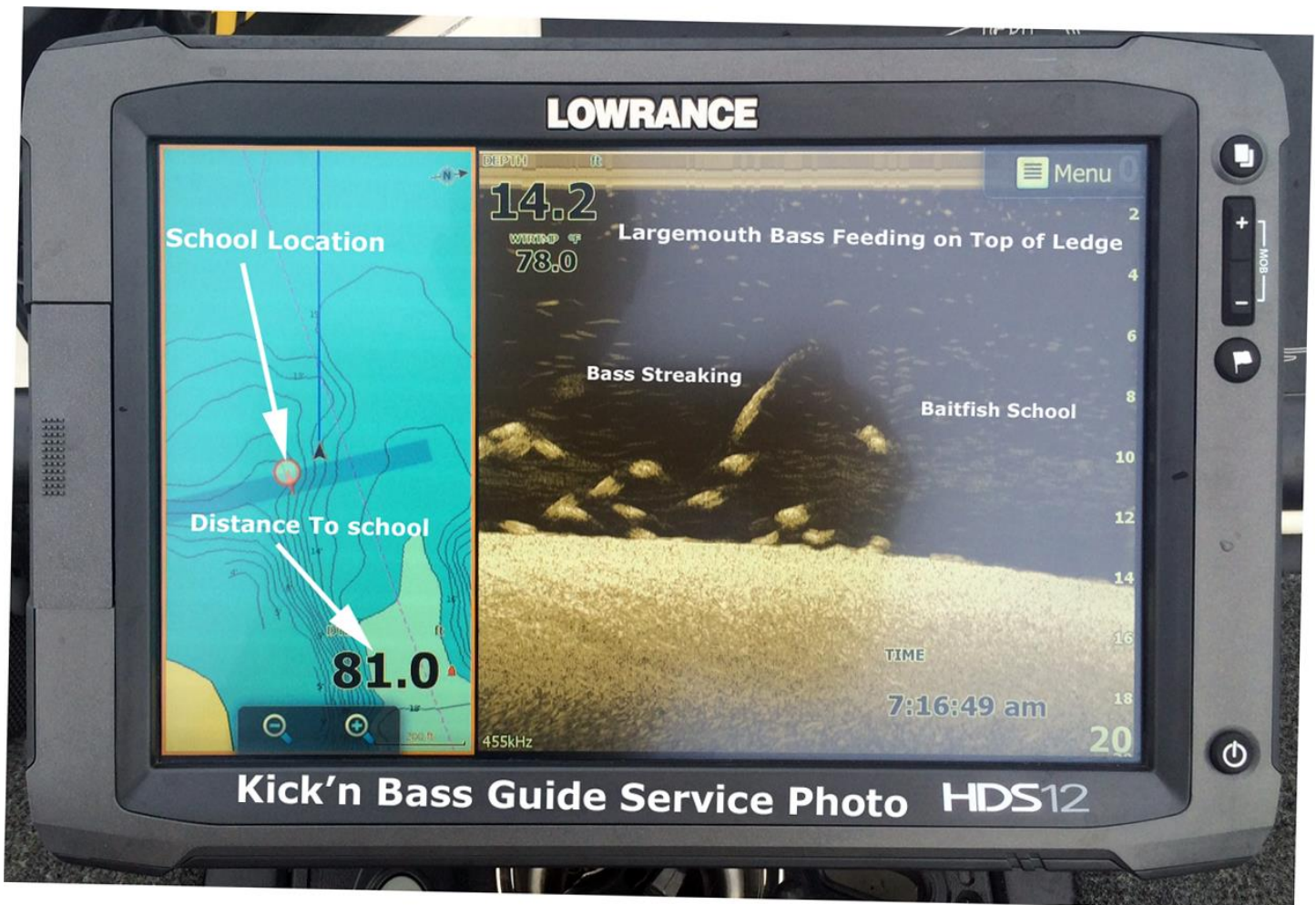
***Book Your Trip NOW!***

***Call 270-703-6133***

# ***Precision Sonar***

## ***Electronics Tip of the Week***

Sonar Accessory website: <http://precisionsonar.com/index.htm>



***Scan & Find the Fish + Mark the Fish + Go Back To the Fish + Catch the Fish***

Your system is capable of completing this task and more. Catching the fish is up to you! Learn to use your sonar equipment effectively and become a better angler. To find out more and schedule your personalized "On the Water" Sonar Class contact [rk@precisionsonar.com](mailto:rk@precisionsonar.com)



## ***Here's what some of our clients are saying about Precision Sonar's "On the Water" Sonar Class ...***



*A "BIG" Thank You goes out to Randy with Precision Sonar for taking the time to get my Lowrance units straightened out and working properly. If your tired of spending all that money and not feeling as confident as you should you need to take his sonar class.*

*Finally having my duel 12's securely mounted up front and not having to deal with the sun glare will be a blessing. I will be proudly showing off my Precision Sonar equipment at all of the FLW Rayovac events for now on. @bobmccumbyfishing.com*

### ***Remember ...***

*The first step in our "On the Water Sonar Class" is to perform an inspection of your system to make sure the installation has been done to factory specs and all components are installed in the proper location. We'll meet at our Installation and Repair facility and if adjustments are needed we can have them made prior to beginning your class. Doing so assures you that your system will perform at a high level and you'll get the most out of your time on the water.*

**Our service is not a seminar, watching a video on youtube, or looking at a depth finder in a classroom. It's hands on, in your boat using your electronics class that will take your understanding and know-how to another level!**

**IF YOU'RE **CONFUSED, FRUSTRATED, AND NEED ANSWERS** then Precision Sonar's "On the Water Sonar Class" is for YOU!**

**Here's just some of what Precision Sonar can do for YOU!**

- **Make sure your HDS unit(s) has the correct settings for the type of fishing you do.**
- **Program the individual screens and install the overlay data on the screen that you want. Example: Depth, Water Temp, Time, etc.**
- **Arrange the screens so they display what you want them to show and make going from page to page orderly and non-confusing.**
- **Eliminate unwanted, non-practical on screen data that clutters your screen and gets in the way of using your unit to its maximum potential.**

- Learn the art of waypoint management. No more cluttered maps with useless or unproductive waypoints. You'll learn how to identify which locations are waypoint worthy and how to go back to those locations without ever assigning a waypoint. You'll learn to only assign a waypoint once you are satisfied the location is worth saving.
- Demo the unit for you to help you be familiar with the screens and commands, so you'll have a good understanding of how to use the unit and take advantage of its fish finding capabilities.
- Provide you with back up material to keep you on track once the class is over.

As a bonus you'll learn to read an electronic topo map and learn how to condense and area to a manageable level and identify those sweet spots that hold fish.

**Be sure and check out the **PRECISION SONAR Console & Bow mounting systems for your boat at**  
[www.precisionsonar.com](http://www.precisionsonar.com)**

**Like us on Facebook Lots of product announcements,  
 Monthly contests.**

**[www.facebook.com/precisionsonar](http://www.facebook.com/precisionsonar)**



*I want to thank Randy with my selection and delivery of my custom console mount! The first thought that came to mind once I knew I was going to upgrade my HDS 8 and instead of getting a refurbished one was how am I going to install the HDS 9 in my Alpha 211 console. I wanted the mount to be durable, adjustable, secure, and most of all I did not want the unit and mount interfering with my elbow room! I am a big guy so these broad shoulders and elbows take up some space when I am at the helm. I checked the website out and filled the order the sheet with my info. Randy called me back later that evening and we talked about the measurements of my console. Once we confirmed the size I needed the order was placed and I received my package in two days!! That's already a plus in my book! The installation instructions were clear, simple, and tips were provided to make the install as smooth as possible. I took my time and installed the mount myself. Total install time was about 45 minutes!!! The mount looks sweet, its custom to match my custom Legend, adds value to my rig, and I will not need another mount if I decide*

*to upgrade the size of my unit in the future. As an option I purchased key locks instead of using knobs to secure my unit to the mount. The mount is fully adjustable, allows for unit tweaks while keeping your hands on the steering wheel, it performs and looks awesome!*

*Sherod Brown – Massachusetts*

