



To Book a trip call 270-703-6133 or visit our website

www.kicknbass.net

May 22, 2015

Subscribe to our Fishing report

Over 2500 and growing! Join the growing number of fishermen and women that receive our fishing report weekly. All you have to do is sign up! Click on this link

<http://eepurl.com/-3Sbj>

Lake Conditions

Lake Levels ... Stable at summer pool. For additional info, including generation schedule for Kentucky Lake, visit the TVA website: http://www.tva.gov/lakes/kyh_r.htm

Water Clarity and Temperature ... Both lakes have what I would consider as ideal water clarity for fishing. The Lowrance temperature probe on my Ranger showed water temps ranging from 71 degrees on the main lake and 73 in the bays with water warming to the mid-70's in the afternoon on sunny days.

Weather Outlook

Today...Mostly sunny. Areas of fog in the morning. Highs in the lower 70s. Calm winds.

Tonight...Partly cloudy. Lows in the mid 50s. Calm winds in the evening becoming southeast 5 mph after midnight.

Saturday...Partly sunny. Highs around 80. Southeast winds 5 to 10 mph.

Saturday Night...Partly cloudy. Lows in the lower 60s. Southeast winds around 5 mph.

Sunday...Cloudy in the morning then becoming partly sunny. Scattered showers and thunderstorms. Highs in the lower 80s. South winds 10 to 15 mph. Chance of precipitation 40 percent.

Sunday Night...Mostly cloudy with scattered showers and thunderstorms. Lows in the upper 60s. Chance of precipitation 50 percent.

Memorial Day...Showers and thunderstorms likely. Highs around 80. Chance of precipitation 60 percent.

Monday Night...Mostly cloudy with a 50 percent chance of showers and thunderstorms. Lows in the upper 60s.

Tuesday...Mostly cloudy with a 50 percent chance of showers and thunderstorms. Highs in the upper 70s.

Prime Feeding Times for Gilbertsville, KY 42044

Primary Feeding Times

May 2015

Month:


May

Year:

2015


Go

Phases:




May 4

Full Moon




May 11

Last Quarter



May 18

New Moon



May 25

First Quarter

Date (CDT)	Morning		Evening	
	Minor	Major	Minor	Major
22	9:09AM	3:18AM	11:11PM	3:42PM
23	10:05AM	4:06AM	----	4:30PM
24	11:49PM	4:52AM	11:01AM	5:15PM
25	12:23AM	5:37AM	11:55AM	5:58PM
26	12:55AM	6:20AM	12:50PM	6:41PM
27	1:26AM	7:02AM	1:44PM	7:23PM
28	1:56AM	7:45AM	2:39PM	8:06PM

Fishing Report

Bass Fishing ... As each day progresses we are seeing more fish heading towards the ledges. However, a lot of fish are still in the bays, especially at the mouth of the bays.

Again this week our most productive method has been working main lake pea gravel banks and concentrating on underwater points to get some great numbers of bass, mostly 1-3/4 – 2-1/2 pounders. Not a lot of big fish but just good quality fun fighters. Most fish have been caught using ZMan finesse worms fished Shakey Head style using a PJ's Bass extractor Jig with a special wire keeper to keep the worm snug against the jig head. We used Shimano Crucial & Cumara Shakey Head rods and Shimano ci4 reels spooled with Power Pro yellow 10lb. braid and a 10lb 100% fluorocarbon leader. This set up gives you the feel, castability and strength without the weight to fish all day long and fight some real good fish. Besides, it's just plain fun to fish this way. If you haven't tried this combination then you don't know what you're missing. If you're in the KY Lakes area see Rhonda at Bass & Gas on Hwy 68 and she'll show you the right equipment. Carolina rigged lizards and slow rolling 8" swim baits on main lake ledges has produced some fish. Generally speaking the ledges aren't holding a huge number of fish just yet but in some locations they are plentiful. It seems we had to do more scanning to find the right location but once we did the fish were cooperative

Bluegill & Redear Fishing

Fishing for both species been good this week. Some nice redear are showing up with regularity and "Bull" bluegills are plentiful as the spawn is in full force. We're looking for another wave of spawners to come on shortly as the full moon of June approaches. We're finding new beds daily.

Using Shelton's Bluegill bug with and without a cricket we did some serious damage on the bluegill and redear populations. Fishing a cricket under an ESB slip bobber was a strong second. The redear seem to be bedding slightly deeper than last year and aren't as plentiful so if you

don't find them real shallow keep this in mind. Calm areas 5-6 feet deep with sandy gravel banks are prime areas to find these bedding fish.

Everlasting Slip Bobbers ... not just your ordinary slip bobber!



Choosing the right slip bobber is just as important as having the right rod & reel and line. **ESB** bobbers have several advantages that will help you catch more fish and keep rigging time to a minimum. As an example every **ESB** bobber comes with a highly polished glass bead that is molded into the top of the tube. No more loose beads to deal with! The high polished bead *won't* cut fishing line and reduced line friction allows the line to flow smoothly increasing casting distance and accuracy, plus the bait gets to the fish much faster than

an ordinary slip float. The bottom end of the tube is protected by a brass guard so the tube itself won't become worn and fray your line. The tube is made of a clear synthetic material that won't swell, split or rot plus you can see your line coming thru the tube when you're rigging up. **ESB** bobbers come in assorted sizes for bluegill to big catfish and in an array colors, plus each bobber comes *with a slip knot*. What could be better! No more frayed lines and loose beads rolling around on the floor, they cast like a dream and everything you need to rig up comes in one neat little package. ESB Bobbers are the only slip bobbers Kick'n Bass uses. (***ESB** bobbers are available at the tackle shops around the Kentucky Lake area or you can order them online at <http://www.hloutdoors.com>)*



Crappie Fishing ...

Kick'n Bass Pontoon Fishing ... The results have been about the same as last week. Mixed results number wise but really big fish. Trolling cranks is beginning to be a serious factor off the points and ledges where some big whites and blacks are being caught. This best bite seems to be best on sunny days. This is a really cool way to fish and have fun.

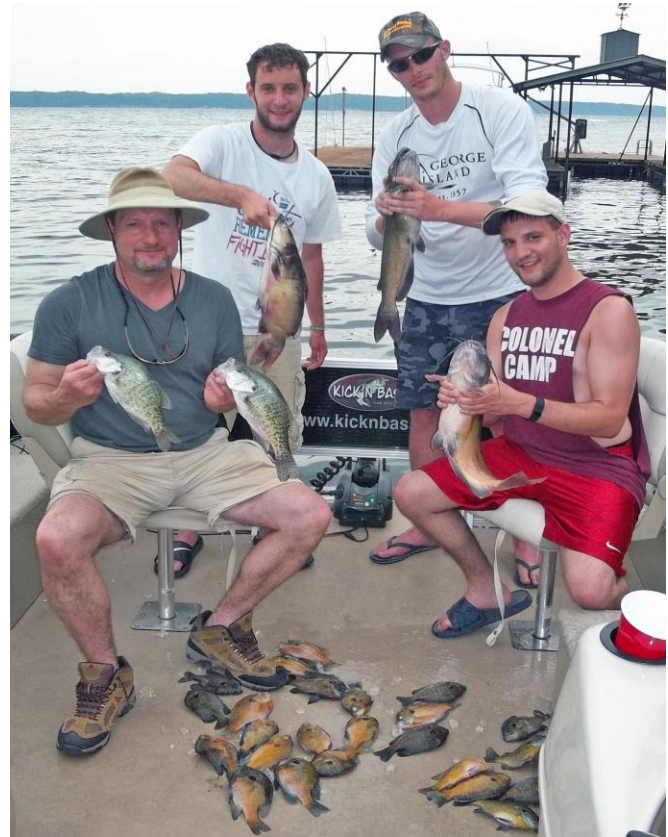
Mike Brock (Photo left) caught the big Crappie of the week

Catfish ... Although we didn't target this species we did manage to catch more than we deserved this week panfishing which indicates that catfishing is very good on just about any live bait you want to use. A big juicy nite crawler would be my choice but a lot of the bait shops have a great assortment of catfish baits and tackle. Bass & Gas on HWY 68 has a real nice assortment of tackle and baits for catfishing

Kick'n Bass Guide Service

Pontoon Fishing Adventures

Have a Blast on the Kick'n Bass Pontoon. Families and Groups Welcome and Corporate Trips are our Specialty. We appreciate folks with Special Needs.



WHO SAID GIRLS CAN'T FISH ... Sisters Donna Shaver and Judy Perry from Missouri (Photo Left) spent some quality time with their mother Sheba fishing for Bluegill, Redear and Catfish from the Kick'n Bass Guide Service. What a great way to enjoy some quality time with your mom!

The Jeff Brewer group (Photo Right) braved a couple of days of torrential downpours and caught a mixed bag of crappie, catfish, Redear and Bluegill

We furnish the rods & reels and lures, clean and package your catch. It's the BEST VALUE on the lake.

Book Your Trip NOW!

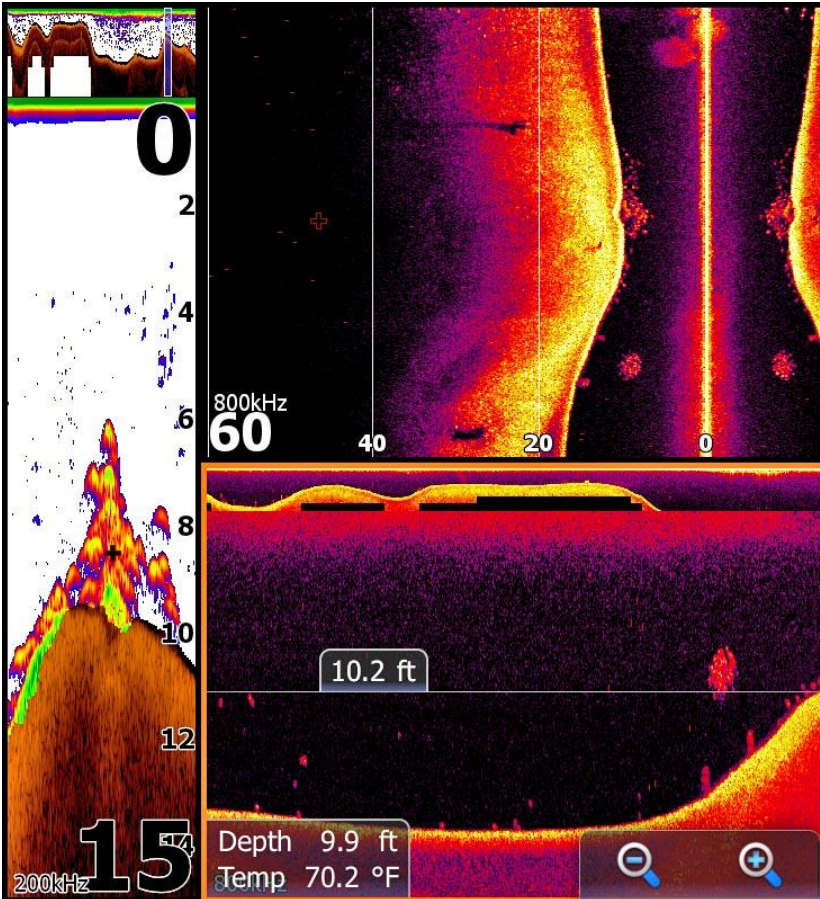
Call 270-703-6133

Precision Sonar

Electronics Tip of the Week

Sonar Accessory website: <http://precisionsonar.com/index.htm>

Jim Champion from Alabama got creative and worked up a pretty interesting screen (Below Photo). Read below what he has to say about his great day on the water using his Lowrance High Definition Sonar System...



Randy, Please find attached a screen shot (shown above) I took while fishing recently, which shows exactly why your on-the-water sonar class is so valuable.

Notice that the 2d sonar, side scan and down scan all show the same structure, bait fish and huge bass in their appropriate formats. I have also attached a picture of one of the bass taken from this location. The spot actually gave up two smallmouth bass over five and three largemouth bass over five and several others that were in the three and four pound range.

The Precision Sonar mounting systems I purchased are also an asset to make sonar use easier than conventional mounting methods, not to mention, viewing and operation is much better. Look forward to visiting again!

Jim Champion – Huntsville, AL.

Here's what some of our clients are saying about Precision Sonar's "On the Water" Sonar Class ...



A "BIG" Thank You goes out to Randy with Precision Sonar for taking the time to get my Lowrance units straightened out and working properly. If your tired of spending all that money and not feeling as confident as you should you need to take his sonar class.

Finally having my duel 12's securely mounted up front and not having to deal with the sun glare will be a blessing. I will be proudly showing off my Precision Sonar equipment at all of the FLW Rayovac events for now on. @bobmccumbyfishing.com

Remember ...

The first step in our "On the Water Sonar Class" is to perform an inspection of your system to make sure the installation has been done to factory specs and all components are installed in the proper location. We'll meet at our Installation and Repair facility and if adjustments are needed we can have them made prior to beginning your class. Doing so assures you that your system will perform at a high level and you'll get the most out of your time on the water.

Our service is not a seminar, watching a video on youtube, or looking at a depth finder in a classroom. It's hands on, in your boat using your electronics class that will take your understanding and know-how to another level!

IF YOU'RE **CONFUSED, FRUSTRATED, AND NEED ANSWERS then Precision Sonar's "On the Water Sonar Class" is for YOU!**

Here's just some of what Precision Sonar can do for YOU!

- **Make sure your HDS unit(s) has the correct settings for the type of fishing you do.**
- **Program the individual screens and install the overlay data on the screen that you want. Example: Depth, Water Temp, Time, etc.**

- Arrange the screens so they display what you want them to show and make going from page to page orderly and non-confusing.
- Eliminate unwanted, non-practical on screen data that clutters your screen and gets in the way of using your unit to its maximum potential.
- Learn the art of waypoint management. No more cluttered maps with useless or unproductive waypoints. You'll learn how to identify which locations are waypoint worthy and how to go back to those locations without ever assigning a waypoint. You'll learn to only assign a waypoint once you are satisfied the location is worth saving.
- Demo the unit for you to help you be familiar with the screens and commands, so you'll have a good understanding of how to use the unit and take advantage of its fish finding capabilities.
- Provide you with back up material to keep you on track once the class is over.

As a bonus you'll learn to read an electronic topo map and learn how to condense and area to a manageable level and identify those sweet spots that hold fish.



**Be sure and check out the
PRECISION SONAR Console &
Bow mounting systems for your
boat at www.precisionsonar.com**

***Like us on Facebook Lots of
product announcements,
Monthly contests.***

www.facebook.com/precisionsonar

***(Photo) 2015 Nitro Z-9 with our Precision Sonar
Side by Side Smart Bracket Console Mounting
System and Lowrance HDS 9 Touch Sonar Units.***