



To Book a trip call 270-703-6133 or visit our website
www.kicknbass.net

Oct 24, 2014

Lake Conditions

This week both lakes are about 4 feet below summer pool and falling during the seasonal drawdown. *At this time both Kentucky and Barkley Dams have gates open creating significant current in the lakes. This could change at any time depending on the amount of inflow.* For more information including a generation schedule visit the TVA website at http://www.tva.gov/lakes/kyh_r.htm

Both lakes range from cloudy in some of the creeks with the main lake and larger bays generally clear. Surface water temps on both lakes are in the 63-degree range. The water temp can go higher or lower depending on the weather we'll have, as October is the month of change.

Weather Outlook

Friday...Mostly sunny. Highs around 70. West winds 5 mph.

Friday Night...Mostly clear. Lows in the lower 50s. Southwest winds 5 mph.

Saturday...Partly sunny. Highs in the upper 70s. West winds 5 to 10 mph.

Saturday Night...Mostly clear. Lows around 50.

Sunday...Sunny. Highs in the mid 70s.

Sunday Night...Mostly clear. Lows in the mid 50s.

Monday...Mostly sunny. Highs around 80.

Monday Night...Partly cloudy. Lows in the lower 60s.

Tuesday...Mostly cloudy with a chance of showers and a slight chance of thunderstorms. Highs in the lower 70s. Chance of precipitation 40 percent.

Prime Feeding Times for Kentucky & Barkley Lakes

Date	Sun Data	Moon Data	Moon Phase	Major Activity Times	Minor Activity Times	Prediction
Friday 10/24/2014	Rises: 7:09 am Sets: 6:04 pm	Rises: 7:47 am Sets: 6:45 pm Over: 1:19 pm Under: 12:54 am	1% Waxing Crescent	12:54 am-2:54 am 1:19 pm-3:19 pm	7:47 am-8:47 am 6:45 pm-7:45 pm	★★★★★ Best
Saturday 10/25/2014	Rises: 7:10 am Sets: 6:03 pm	Rises: 8:46 am Sets: 7:28 pm Over: 2:10 pm Under: 1:44 am	3% Waxing Crescent	1:44 am-3:44 am 2:10 pm-4:10 pm	8:46 am-9:46 am 7:28 pm-8:28 pm	★★★★ Better
Sunday 10/26/2014	Rises: 7:11 am Sets: 6:02 pm	Rises: 9:46 am Sets: 8:16 pm Over: 3:03 pm Under: 2:36 am	8% Waxing Crescent	2:36 am-4:36 am 3:03 pm-5:03 pm	9:46 am-10:46 am 8:16 pm-9:16 pm	★★★ Good
Monday 10/27/2014	Rises: 7:12 am Sets: 6:01 pm	Rises: 10:44 am Sets: 9:09 pm Over: 3:58 pm Under: 3:30 am	15% Waxing Crescent	3:30 am-5:30 am 3:58 pm-5:58 pm	10:44 am-11:44 am 9:09 pm-10:09 pm	★★ Average
Tuesday 10/28/2014	Rises: 7:13 am Sets: 5:59 pm	Rises: 11:39 am Sets: 10:07 pm Over: 4:53 pm Under: 4:25 am	24% Waxing Crescent	4:25 am-6:25 am 4:53 pm-6:53 pm	11:39 am-12:39 pm 10:07 pm-11:07 pm	★ Average
Wednesday 10/29/2014	Rises: 7:14 am Sets: 5:58 pm	Rises: 12:30 pm Sets: 11:09 pm Over: 5:49 pm Under: 5:21 am	34% Waxing Crescent	5:21 am-7:21 am 5:49 pm-7:49 pm	12:30 pm-1:30 pm 11:09 pm-12:09 am	★ Average
Thursday 10/30/2014	Rises: 7:15 am Sets: 5:57 pm	Rises: 1:17 pm Sets: --:-- Over: 6:44 pm Under: 6:17 am	50% First Quarter	6:17 am-8:17 am 6:44 pm-8:44 pm	1:17 pm-2:17 pm --:--:--:--:--	★ Average

Kick'n Bass Launches New Website



The banner features the Precision Sonar logo at the top, which includes a stylized blue sonar wave icon and the text "PRECISION SONAR" in large, bold, black letters, with "OUTSMART THE FISH" in smaller letters below it. Below the logo is a navigation bar with a blue background and white text. The first item is "us out vs. the Competition" with a white checkmark icon. Other items include "PRODUCTS", "REVIEWS", "GALLERY", "SONAR CLASS", "PARTNERS", "ORDER", and "CONTACT". The main image shows two Lowrance HD512 sonar units mounted side-by-side on a boat's console. A hand is pointing at the right unit's screen, which displays a depth of 20.3. The left unit's screen shows a depth of 7.1 and a time of 10:07:23 am. A blue text box in the bottom right of the image reads "SIDE BY SIDE MOUNTING SYSTEMS". Below the main image is a row of five small blue squares. At the bottom of the banner are three sections: "PRODUCTS" with an image of sonar accessories and a blue arrow pointing right; "SONAR CLASSES" with an image of a person on a boat and a blue arrow pointing right; and "TECH TIPS" with a logo and the text "Expand Your Expertise" and a blue arrow pointing right.

PRECISION SONAR
OUTSMART THE FISH

✓ us out vs. the Competition | PRODUCTS | REVIEWS | GALLERY | SONAR CLASS | PARTNERS | ORDER | CONTACT

SIDE BY SIDE MOUNTING SYSTEMS

PRODUCTS
Sonar Accessories >

SONAR CLASSES
Know Your Electronics >

TECH TIPS
Expand Your Expertise >

Kick'n Bass Guide Service Sonar Accessory business has grown by leaps and bounds. Folks appreciate our top of the line products and willingness to go the extra mile to help out ... that's been the cornerstone of our business and success. With that being said, we're not done yet! We're ready to take our Sonar Accessory business to another level. Effective immediately to better serve you our new sister company, Precision Sonar has been launched. Visit our website <http://precisionsonar.com/index.htm> to view the new products we have available, including our new **Side by Side Smart Bracket Console Mounting System**.

Your business is sincerely appreciated and we look forward to working with you!

Randy Kuhens

It's CRAPPIE Time!!!

Catch Fish & Have Fun on the Kick'n Bass Pontoon

Have we got a deal for you! We furnish the rods & reels and lures, clean and package your catch, pick you up and bring you back. It's the BEST VALUE on the lake!

Families and Groups are Welcome. Corporate Trips are our Specialty. We appreciate folks with Special Needs.



(Photo L) Robbie Hand and his group had a good time on the Kick'n bass Pontoon catching early fall crappie and big white bass trolling crankbaits. So did Rick Bay from Chicago (Photo R).

Book Your Trip NOW! Call 270-703-6133

Check out our video on Illinois Outdoors TV on Trolling Crank Baits for Crappie from the PONTOON ...

<https://www.youtube.com/watch?v=nVGnbN5tvSw&list=UUUAXuK-wS4XHVYy6Bo4GnaQ>

Bass Fishing ... OK, it's early morning, slight mist on the lake, cool and no one else in sight ... not even the pre-tournament boys. My client and I pull up to a shaded deep water main lake point and double on our first cast ... two 4 pounders. I catch another 4 pounder on the next cast and we've got 12 pounds in 3 casts. Not a bad way to start the day. Unfortunately for the next 4 hours we fish hard and never get a bite! Sad but it's true. That's the way it seems it's either feast or famine right now when it comes to bass fishing.

I don't know how long the gates are going to be open and creating significant current in the lake but if I were you I would concentrate on fishing the deeper main lake points. I can tell you that there is a significant number of bass hanging around those areas and at times they bite good and other times they leave me wondering why they won't bite. My best advice, as hard as it will be to do this, is to use something that DOESN'T look like a shad. Our best results were slowly fishing a ZMan finesse worm shakey head style and not moving it at all. Darn near like cat fishing. There were time I never felt the bite, not even with my trusty braid and fluorocarbon line combo. That's how light the fish are biting with the North Northeast winds we've been having.

With the favorable feeding times this weekend (see chart above) and a return to westerly winds the fish will be more aggressive and the bite will improve. If so the following will apply ...

Early and late during calm conditions think Topwater working the long tapering points in 5-8 feet of water or along chunk rock banks mid way back in the bays. Spook type baits and the Excalibur Spitti'n image are two of the better baits right now. The SPRO McStick will do some serious damage when the fish are aggressive. Best banks are those with coffee can size rocks and deeper water, 10 feet or so, that is a cast away from the bank. Later in the day some bass can be caught slow-rolling spinner baits or better yet a Chatterbait by paralleling these same areas. Very late in the afternoon the back of the bays where cover is present will be the place to be and use a SPRO square bill crank bait. This pattern has been pretty good in the past keep in mind we've had to work a lot of areas to find cooperating fish. The best Square bill bar none has been the SPRO Fat John 60 in any shad pattern. A slow retrieve and wide wobble worked real well on several trips.

Some Bass are also being caught on the ledges but with the shad migrating towards the bays the action on these areas are hard to figure out. If there's current present you can catch some fish but a lot of those are suspended among schools of baitfish and being caught on a STEEL SHAD blade bait. .

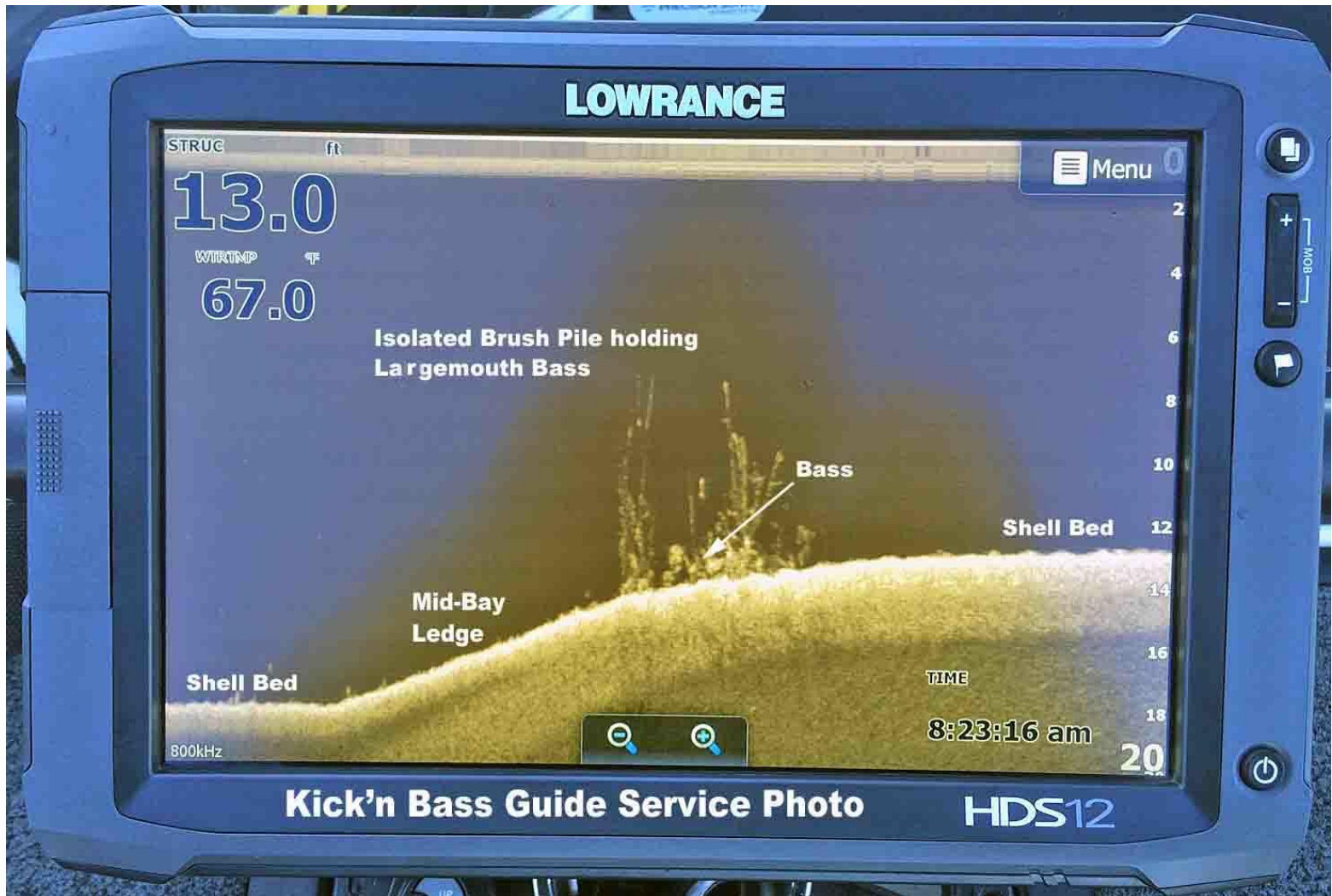
Crappie Fishing ... from the Kick'n Bass Pontoon has been feast or famine. Good weather and prevailing winds make for good fishing. We've had neither lately but thinks are looking very good for the next few days. Crappie are slow to fair over brush in 10-12 feet of water and are very scattered. Once the gates at the Dam close you will see a more normal bite return.

White Bass & Yellow Bass ... fishing is feast or famine. Some of the bigger fish have been suspended 20 feet deep with big schools of baitfish over much deeper water. **Ken's Hybrid Spinner**, made locally by Master Lure Designer Ken McGregor, has been absolutely the hottest lure bar none. Make a long cast and let the lure settle on the bottom and then rip it off the bottom and continue with a steady retrieve. As always a **Steel Shad** blade bait is a good backup plan.

Catfish ... We've managed to catch a few everyday on either a Ken's Hybrid spinner or a Steel Shad whether we're bass fishing from the Ranger boat or the Pontoon. They're on the ledges 15-20 feet deep next to deeper water. For best results keep your bait on or near the bottom using a slow yo-yo retrieve.



Sonar Tip Of The Week Featuring Lowrance High Definition Sonar Systems



This location was discovered during one of our guide trips this week. The image shows an isolated brush pile on a submerged roadbed covered in shells. Shell Beds are a fish magnet and where the ecosystem of a lake starts and any time you can find cover present you can bet game fish will set up there. The bass were burrowed in the brush pile and we spent several minutes casting to get the bait right where they would hit. While we only caught one fish from this brush pile, its High Percentage areas like this that present a good opportunity. It's a good idea to take the time to look an area like this over with your Lowrance HDS system to see what's down there.

Be the best angler you can be by learning to use your electronics to their full potential. For your personalized "On the water Sonar Class" contact Lowrance Pro Staffer Randy Kuhens at rk@kicknbass.net.

Here's what some of our clients had to say about their "On the Water" class experience ...

I bought a new bass boat in may of 2014 boat was set with lowrance units. I was having trouble with finding fish and other structure . While fishing a bass open I was told about Randy from Kentucky Lake , told he is the geek squad for fish finders . I made a trip with Randy and was it well worth it . We met at Bass & Gas and after a thorough evaluation of my system I found out my units were not set up properly.

The team from Bass & Gas immediately went to work to adjust my system and get me going . They went over board if you know what I'm saying. Randy then took me on the water, and wow what a class. Anyone wanting to learn to use his or her system, 110 percent needs to get with Randy.

Keith Sensenig – West Virginia

Randy, I was to the point I was so frustrated with my electronics that I was basically using them as a very expensive depth finder. Your class changed all of that. Best investment I could have made to help my fishing and reduce my stress level! LOL! Thanks for a great class!

Paul LaPierre – Indianapolis, IN

Randy, I went on vacation to St Clair in pursuit of smallmouth bass. Once on the lake I found the fish, went back to them and caught them. I used what I learned in our class to do that.

Charley Calvin – Tipp City, OH

Remember ... The first step in our "On the Water Sonar Class" is to perform an inspection of your system to make sure the installation has been done to factory specs and all components are installed in the proper location. If adjustments are needed we can have them made prior to beginning your class. Doing so assures you that your system will perform at a high level and you'll get the most out of your time on the water. You've made a Significant Investment in Electronics. Be the best angler you can be by learning to use your electronics to their full potential. For your personalized "On the water Sonar Class" contact Lowrance Pro Staffer Randy Kuhens at rk@kicknbass.net

The "On the Water Sonar Class" is a one on one, hands on, in your boat using your electronics instruction that will take your understanding and know-how to another level. We get it and you will too!

Kick'n Bass' 7 Essential Steps to Simplify Using Your HDS System.

Kick'n Bass will perform the following ...

- 1. Complete a detailed inspection on your system to certify the installation has been done to factory specs. (If adjustments are required technicians are available to fine tune your system prior to beginning your class. Doing so assures you that your system will perform at an optimum level and you'll get the most out of your time on the water).**
- 2. Check all network settings for compatibility and make adjustments if needed.**
- 3. Program the individual screens and install the overlay data that is best suits the type fishing you do. Example: Depth, Water Temp, Time, etc. Eliminate unwanted, non-practical on screen clutter that hampers using your unit to its maximum potential.**
- 4. Arrange the screens so that going from page to page is orderly and non-confusing. You'll become familiar with the screens and commands and what they'll do for you.**

5. Dial in Sonar and Structure Scan Graphics and choose appropriate Palette for the lakes you fish.
6. Demonstrate the art of waypoint management. No more cluttered maps with useless or unproductive waypoints. You'll learn to identify which locations are waypoint worthy and how to go back to those locations without ever assigning a waypoint. You'll assign a waypoint once you are satisfied the location is worth saving.
7. Demo the unit so you'll be able to take advantage of its fish finding capabilities. You'll learn to identify shell beds, submerged stumps, brush piles, ledges, game fish species and more.

As a bonus Kick'n Bass will help you learn to read an electronic topo map and find "places of interest" that could be potential fishing hot spots.

*** ***FREE*** *Installation October* ***

That's right ... **FREE Installation** at Bass & Gas in Benton, KY on all Lowrance, Humminbird, Minn Kota Talons and Trolling Motors purchased in the month of October. A \$450 value for FREE!!!!



Don't miss out on a professional installation on the quality marine equipment you have been waiting for. (This offer is only good on marine electronics purchased from **Bass & Gas** during the month of September 2014). Call for details 270-527-1900.