



**To Book a trip call 270-703-6133 or visit our website**  
[www.kicknbass.net](http://www.kicknbass.net)

**Oct 3, 2014**

## Lake Conditions

This week both lakes are about 4 feet below summer pool and falling during the seasonal drawdown. For more information including a generation schedule visit the TVA website at [http://www.tva.gov/lakes/kyh\\_r.htm](http://www.tva.gov/lakes/kyh_r.htm)

Both lakes range from cloudy in some of the creeks with the main lake and larger bays generally clear. Surface water temps on both lakes are in the 74-degree range. The water temp can go higher or lower depending on the weather we'll have, as October is the month of change.

## Weather Outlook

**Friday ..** Mostly cloudy with a 20 percent chance of showers. Highs in the lower 70s. West winds 10 to 15 mph. **Tonight...** Mostly clear. Lows in the lower 40s. West winds 10 to 15 mph.

**Saturday...** Mostly sunny. Highs in the lower 60s. West winds 10 to 15 mph.

**Saturday Night...** Mostly clear. Lows in the upper 30s. Southwest winds 5 to 10 mph.

**Sunday...** Partly sunny. Highs in the lower 70s. Southwest winds 10 to 15 mph. Gusts up to 30 mph in the afternoon.

**Sunday Night...** Partly cloudy with a 30 percent chance of showers. Lows in the lower 50s.

**Monday...** Partly sunny with a 40 percent chance of showers. Highs in the lower 70s.

**Monday Night...** Mostly cloudy with a 50 percent chance of showers. Lows in the mid 50s.

**Tuesday...** Partly sunny with a 20 percent chance of showers. Highs in the mid 70s.

**Tuesday Night...** Mostly clear. Lows in the lower 50s. Highs in the upper 70s.

## Prime Feeding Times for Kentucky & Barkley Lakes

Date	Sun Data	Moon Data	Moon Phase	Major Activity Times	Minor Activity Times	Prediction
Saturday 10/4/2014	Rises: 6:50 am Sets: 6:31 pm	Rises: 4:02 pm Sets: 2:24 am Over: 9:45 pm Under: 9:18 am	81% Waxing Gibbous	9:18 am-11:18 am 9:45 pm-11:45 pm	2:24 am-3:24 am 4:02 pm-5:02 pm	★ Average
Sunday 10/5/2014	Rises: 6:51 am Sets: 6:30 pm	Rises: 4:43 pm Sets: 3:33 am Over: 10:40 pm Under: 10:13 am	90% Waxing Gibbous	10:13 am-12:13 pm 10:40 pm-12:40 am	3:33 am-4:33 am 4:43 pm-5:43 pm	★ Average
Monday 10/6/2014	Rises: 6:52 am Sets: 6:28 pm	Rises: 5:23 pm Sets: 4:42 am Over: 11:34 pm Under: 11:07 am	96% Waxing Gibbous	11:07 am-1:07 pm 11:34 pm-1:34 am	4:42 am-5:42 am 5:23 pm-6:23 pm	★★★★ Better
Tuesday 10/7/2014	Rises: 6:53 am Sets: 6:27 pm	Rises: 6:02 pm Sets: 5:52 am Over: 12:29 am Under: 12:02 pm	99% Waxing Gibbous	12:29 am-2:29 am 12:02 pm-2:02 pm	5:52 am-6:52 am 6:02 pm-7:02 pm	★★★★★ Best
Wednesday 10/8/2014	Rises: 6:54 am Sets: 6:25 pm	Rises: 6:42 pm Sets: 7:01 am Over: 12:29 am Under: 12:56 pm	100% FULL MOON	12:29 am-2:29 am 12:56 pm-2:56 pm	7:01 am-8:01 am 6:42 pm-7:42 pm	★★★★★ Best
Thursday 10/9/2014	Rises: 6:55 am Sets: 6:24 pm	Rises: 7:24 pm Sets: 8:08 am Over: 1:23 am Under: 1:50 pm	98% Waning Gibbous	1:23 am-3:23 am 1:50 pm-3:50 pm	8:08 am-9:08 am 7:24 pm-8:24 pm	★★★★ Better

# ***Catch Fish & Have Fun on the Kick'n Bass Pontoon***

***Have we got a deal for you! We furnish the rods & reels and lures, clean and package your catch, pick you up and bring you back. It's the BEST VALUE on the lake!***

***Families and Groups are Welcome. Corporate Trips are our Specialty. We appreciate folks with Special Needs.***

***Book Your Trip NOW! Call 270-703-6133***



***"Hey Randy, I got a bone to pick with you!" say's Ken Rideout. "You let my wife catch a bigger crappie than me!" Well that's just what Mary Ann did (Photo L) as she caught a couple of early fall monster crappie trolling crankbaits from the Kick'n Bass Pontoon. (Photo R) Our good friend Rusty Burnett from Louisville with another Giant fall crappie caught from the Kick'n Bass ponton.***

***Check out our video on Illinois Outdoors TV on Trolling Crank Baits for Crappie from the PONT00N ...***

***<https://www.youtube.com/watch?v=nVGnbN5tvSw&list=UUUAXuK-wS4XHVVy6Bo4GnaQ>***

**Bass Fishing ...** Up until the cold front hit us bass fishing had been pretty good on a variety of baits. Early my clients and I caught good numbers on Topwater working the long tapering points in 5-8 feet of water or along chunk rock banks mid way back in the bays. I was taught a pretty good lesson this week from one of my clients who twitched a SPRO McStick and caught 8 good bass to my one. I was using a Pop-R among other things. Best banks are those with coffee can size rocks and deeper water, 10 feet or so, that is a cast away from the bank. Later in the day some bass are being caught slow-rolling spinner baits or better yet a Chatterbait by paralleling these same areas. Very late in the afternoon the back of the bays where cover is present is the place to be.

Some Bass are also being caught on the ledges but with the shad migrating towards the bays the action on these areas are hard to figure out. If there's current present you can catch some fish but if not the ledges are basically void of fish so check the generation schedule.

**Crappie ...** When the Monarch butterflies start their southerly migration from Canada to Mexico it's time for some good crappie fishing. So says resident crappie expert Buddy Coy. Buddy must be right because we're off to a really good start crappie fishing and the Monarchs can be seen all over the lake headed south. Crappie fishing has been especially good trolling crank baits from the Kick'n Bass pontoon.

**White Bass & Yellow Bass ...** fishing is feast or famine. Some of the bigger fish have been suspended 20 feet deep with big schools of baitfish over much deeper water. **Ken's Hybrid Spinner**, made locally by Master Lure Designer Ken McGregor, has been absolutely the hottest lure bar none. Make a long cast and let the lure settle on the bottom and then rip it off the bottom and continue with a steady retrieve. As always a Steel Shad blade bait is a good backup plan.

**Catfish ...** We've managed to catch a few everyday on either a Ken's Hybrid spinner or a Steel Shad whether we're bass fishing from the Ranger boat or the Pontoon. They're on the ledges 15-20 feet deep next to deeper water. For best results keep your bait on or near the bottom using a slow yo-yo retrieve.

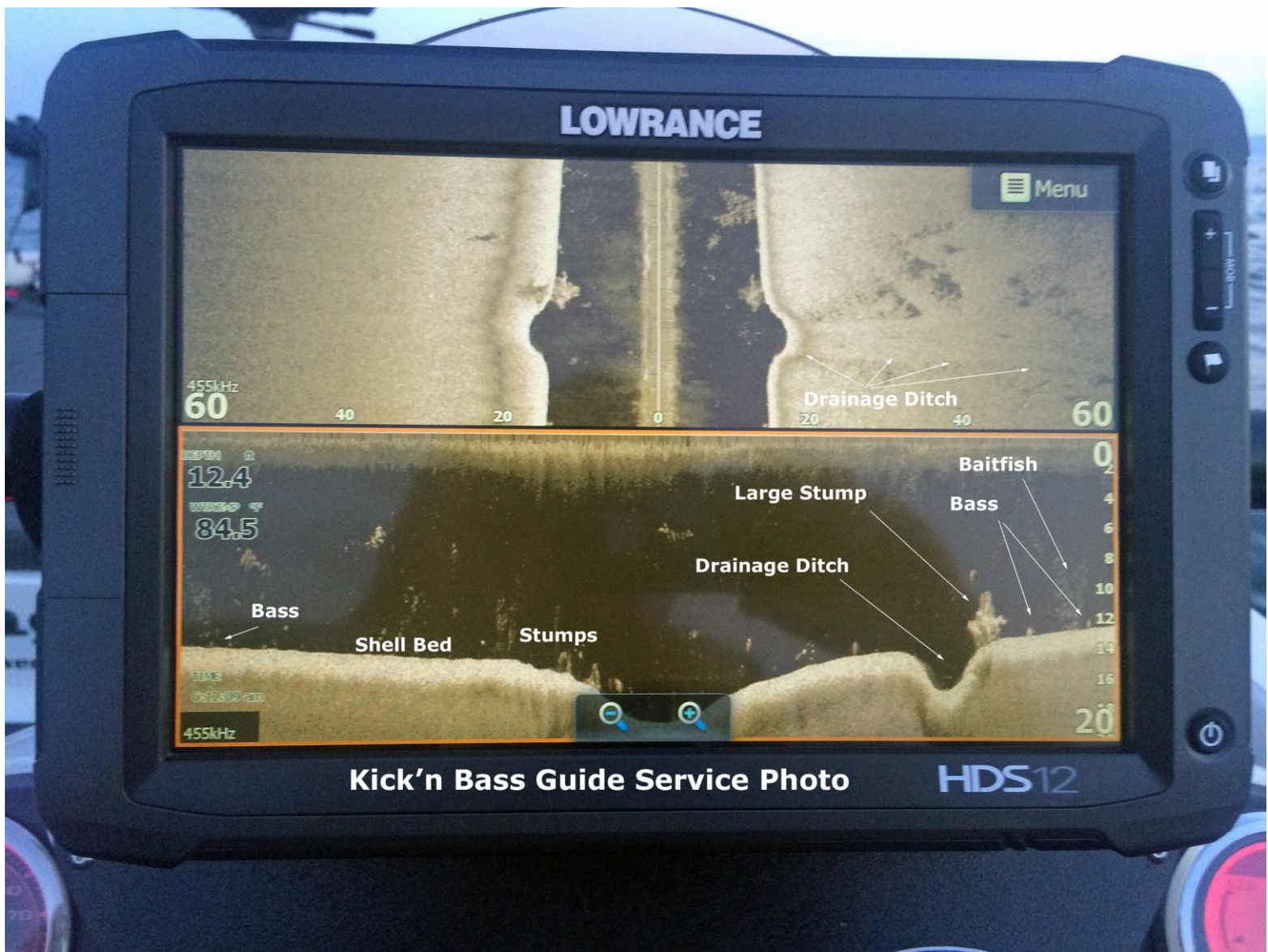
\*\*\* **FREE** *Installation October* \*\*\*

That's right ... **FREE Installation** at Bass & Gas in Benton, KY on all Lowrance, Humminbird, Minn Kota Talons and Trolling Motors purchased in the month of October. A \$450 value for FREE!!!!



Don't miss out on a professional installation on the quality marine equipment you have been waiting for. (This offer is only good on marine electronics purchased from **Bass & Gas** during the month of September 2014). Call for details 270-527-1900.

**Sonar Tip Of The Week Featuring  
Lowrance High Definition Sonar System**



*This is one of my favorite pages, it is so very efficient and easy to use. This set up allows the angler to scan both left and right and below the boat. The upper portion of the screen shows a side scan view of the area find stumps that might hold some good fish or a road bed or ditch or two. In this case I noticed a ditch that drained a rather large flat before it emptied into the Tennessee River. There were some nice fish gathering just a few feet from the ditch that we caught ripping spoons off the bottom*

*Be the best angler you can be by learning to use your electronics to their full potential. For your personalized "On the water Sonar Class" contact Lowrance Pro Staffer Randy Kuhens at [rk@kicknbass.net](mailto:rk@kicknbass.net).*

**Here's what some of our clients had to say about *The Smart Bracket Console Mounting System* and their "On the Water Sonar Class"**



*I did a ton of research sonar mounting systems, I knew I wanted the best and that's why I chose Kick N Bass Mounts. I looked at other products; I found that the Smart Bracket Console Mounting System offered the features that were important to me. I don't have any sun glare on the screen, it's easy to make changes while running down the lake, no vibrations, it's fully adjustable and it's solid as a rock. The mounts don't have any sharp edges and they have a coating on them that will last forever.*

*Randy "fine tuned" the graphs and then we hit the water for a Sonar Class he teaches. I learned a lot. The customer service was top notch. I couldn't ask for anything else.*

*Mark Wenger – Louisville, KY*

***The "On the Water Sonar Class" is a one on one, hands on, in your boat using your electronics instruction that will take your understanding and know-how to another level. We get it and you will too!***

## ***Kick'n Bass' 7 Essential Steps to Simplify Using Your HDS System.***

***Kick'n Bass will perform the following ...***

- 1. Complete a detailed inspection on your system to certify the installation has been done to factory specs. (If adjustments are required technicians are available to fine tune your system prior to beginning your class. Doing so assures you that your system will perform at an optimum level and you'll get the most out of your time on the water).***
- 2. Check all network settings for compatibility and make adjustments if needed.***
- 3. Program the individual screens and install the overlay data that is best suits the type fishing you do. Example: Depth, Water Temp, Time, etc. Eliminate unwanted, non-practical on screen clutter that hampers using your unit to its maximum potential.***
- 4. Arrange the screens so that going from page to page is orderly and non-confusing. You'll become familiar with the screens and commands and what they'll do for you.***
- 5. Dial in Sonar and Structure Scan Graphics and choose appropriate Palette for the lakes you fish.***
- 6. Demonstrate the art of waypoint management. No more cluttered maps with useless or unproductive waypoints. You'll learn to identify which locations are waypoint worthy and how to go back to those locations without ever assigning a waypoint. You'll assign a waypoint once you are satisfied the location is worth saving.***

7. Demo the unit so you'll be able to take advantage of its fish finding capabilities. You'll learn to identify shell beds, submerged stumps, brush piles, ledges, game fish species and more.

As a bonus Kick'n Bass will help you learn to read an electronic topo map and find "places of interest" that could be potential fishing hot spots.



**Smart Bracket Console Mounting System Available for**

**Most Makes and Models of Boats**

**Order Now! 270-703-6133**

**Ranger & Ranger Aluminum, Triton, Skeeter, Phoenix, Nitro, Bass Cat and others ...**

**Be sure and Check out our webpage for more photos & other Sonar Accessories. <http://kicknbass.net/sonar-accessories.php>**