



To Book a trip call 270-703-6133 or visit our website
www.kicknbass.net

Sept. 5th 2014

Lake Conditions

This week both lakes are approximately 2.5 feet below summer pool and falling slightly during the seasonal drawdown. For more information including a generation schedule visit the TVA website at http://www.tva.gov/lakes/kyh_r.htm

Both lakes range from cloudy in some of the creeks with the main lake and larger bays generally clear. Surface water temps on both lakes are in the 82 degree range and trending higher in the afternoons on sunny days.

Weather Outlook

Friday...Partly sunny. A 20 percent chance of showers and thunderstorms in the afternoon. Highs in the lower 90s. Southwest winds around 5 mph.

Friday Night...Partly cloudy in the evening then becoming mostly cloudy. A 30 percent chance of showers and thunderstorms. Lows in the lower 70s. West winds 5 mph.

Saturday...Mostly cloudy with a chance of showers and isolated thunderstorms. Highs in the lower 80s. North winds 5 to 10 mph. Chance of precipitation 40 percent.

Saturday Night...Mostly cloudy. Lows in the mid 60s. North winds 5 to 10 mph.

Sunday...Mostly sunny. Highs around 80.

Sunday Night...Mostly clear. Lows in the upper 50s.

Monday...Mostly sunny. Highs in the lower 80s.

Monday Night...Mostly clear. Lows in the lower 60s.

Prime Feeding Times for Kentucky & Barkley Lakes

Date	Sun Data	Moon Data	Moon Phase	Major Activity Times	Minor Activity Times	Prediction
Friday 9/5/2014	Rises: 6:26 am Sets: 7:15 pm	Rises: 4:40 pm Sets: 2:24 am Over: 10:05 pm Under: 9:36 am	84% Waxing Gibbous	9:36 am-11:36 am 10:05 pm-12:05 am	2:24 am-3:24 am 4:40 pm-5:40 pm	☉ Average
Saturday 9/6/2014	Rises: 6:27 am Sets: 7:14 pm	Rises: 5:27 pm Sets: 3:33 am Over: 11:03 pm Under: 10:34 am	92% Waxing Gibbous	10:34 am-12:34 pm 11:03 pm-1:03 am	3:33 am-4:33 am 5:27 pm-6:27 pm	☼☼ Good
Sunday 9/7/2014	Rises: 6:28 am Sets: 7:12 pm	Rises: 6:10 pm Sets: 4:43 am Over: --:-- Under: 11:32 am	97% Waxing Gibbous	--:--:-- 11:32 am-1:32 pm	4:43 am-5:43 am 6:10 pm-7:10 pm	☼☼☼ Better
Monday 9/8/2014	Rises: 6:29 am Sets: 7:11 pm	Rises: 6:51 pm Sets: 5:55 am Over: 12:00 am Under: 12:28 pm	100% FULL MOON	12:00 am-2:00 am 12:28 pm-2:28 pm	5:55 am-6:55 am 6:51 pm-7:51 pm	☼☼☼☼ Best
Tuesday 9/9/2014	Rises: 6:29 am Sets: 7:09 pm	Rises: 7:31 pm Sets: 7:06 am Over: 12:56 am Under: 1:23 pm	99% Waning Gibbous	12:56 am-2:56 am 1:23 pm-3:23 pm	7:06 am-8:06 am 7:31 pm-8:31 pm	☼☼☼☼ Best
Wednesday 9/10/2014	Rises: 6:30 am Sets: 7:08 pm	Rises: 8:10 pm Sets: 8:16 am Over: 1:51 am Under: 2:18 pm	96% Waning Gibbous	1:51 am-3:51 am 2:18 pm-4:18 pm	8:16 am-9:16 am 8:10 pm-9:10 pm	☼☼☼ Better
Thursday 9/11/2014	Rises: 6:31 am Sets: 7:06 pm	Rises: 8:51 pm Sets: 9:24 am Over: 2:45 am Under: 3:11 pm	90% Waning Gibbous	2:45 am-4:45 am 3:11 pm-5:11 pm	9:24 am-10:24 am 8:51 pm-9:51 pm	☼☼ Good

Catch Fish & Have Fun on the Kick'n Bass Pontoon

Have we got a deal for you! We furnish the rods & reels and lures, clean and package your catch, pick you up and bring you back. It's the BEST VALUE on the lake!

Families and Groups are Welcome. Corporate Trips are our Specialty. We appreciate folks with Special Needs.

Book Your Trip NOW! Call 270-703-6133



The Luckett's (Photo L) from Louisville had a great trip with us this week fishing from the Kick'n Bass Pontoon and caught some huge Catfish and White Bass.

Talk about starting them out early ... Bobby & Amy Shannon and their brood had a blast on the Pontoon. Check out the little one on mom's lap reaching for the fish, LOL! The Pontoon truly is, a boat for all ages ... c'mon on give it a try!

Check out our video on Illinois Outdoors TV on Trolling Crank Baits for Crappie from the PONTOON ...

<https://www.youtube.com/watch?v=nVGnbN5tvSw&list=UUUAXuK-wS4XHVVy6Bo4GnaQ>

White Bass fishing is really good as big numbers and size are the norm. The big schools are finally beginning to show up along the Tennessee River channel ledges. Some of the bigger fish have been suspended 20 feet deep with big schools of baitfish over much deeper water. **Ken's Hybrid Spinner**, made locally by Master Lure Designer Ken McGregor, has been absolutely the hottest lure bar none. Make a long cast and let the lure settle on the bottom and then rip it off the bottom and continue with a steady retrieve. As always a Steel Shad blade bait is a good backup plan.

Catfish ... is a close second to white bass fishing. We've managed to catch a bunch everyday on either a Ken's Hybrid spinner or a Steel Shad whether we're bass fishing from the Ranger boat or the Pontoon. So if Catfish is your thing the time is NOW !. They're on the ledges 15-20 feet deep next to deeper water. Their stomachs are full of Mayfly larva so for best results keep your bait on or near the bottom using a slow yo-yo retrieve.

Bass Fishing ... Bass Fishing has been picked up considerably especially in the afternoons during favorable feeding times and current generation. With the extreme heat and the demand for electricity TVA is running four generators from Midnight to Midnight and this is creating lots of current in the upper lake. Largemouth bass are relating to offshore shell beds where schools of baitfish are congregating. The mouths of the bays are another prime location where schools of bass are gathering. A Steel Shad blade bait and a shad colored SPRO crank bait are catching their fair share. Large white Bass are mixed in with the bass. To extend the bite your best bet is to have a back up plan when the fish go to the bottom like dragging a ZMan Shakey Head or a PJ's jig.

*** **FREE** Installation September ***

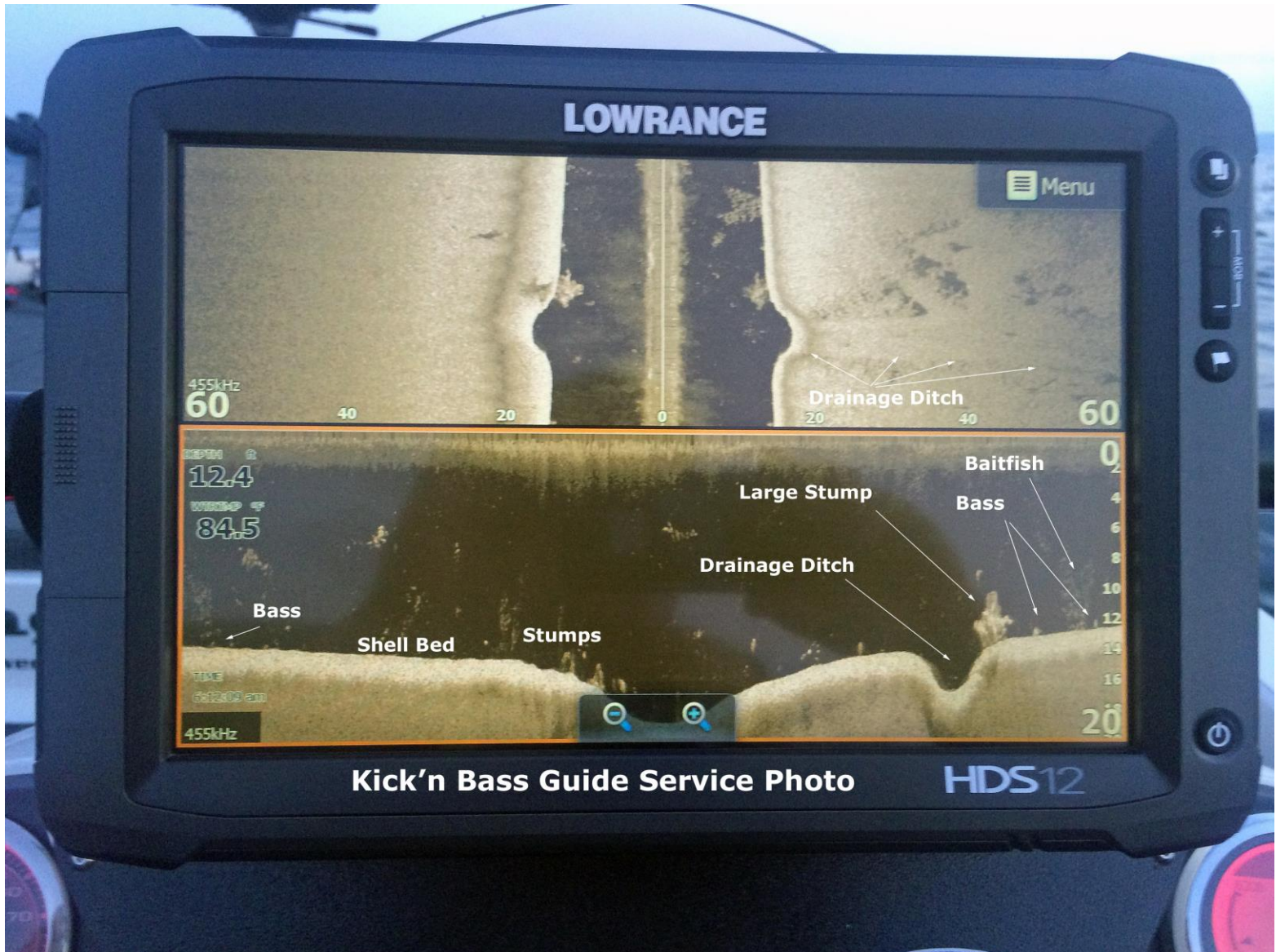
That's right ... **FREE Installation** at Bass & Gas in Benton, KY on all Lowrance, Humminbird, Minn Kota Talons and Trolling Motors purchased in the month of September. A \$450 value for FREE!!!!



Don't miss out on a professional installation on the quality marine equipment you have been waiting for. (This offer is only good on marine electronics purchased from **Bass & Gas** during the month of September 2014). Call for details 270-527-1900

Sonar Tip Of The Week Featuring

Lowrance High Definition Sonar System



This is one of my favorite pages, it is so very efficient and easy to use. This set up allows the angler to scan both left and right and below the boat. The upper portion of the screen shows a side scan view of the area find stumps that might hold some good fish or a road bed or ditch or two. In this case I noticed a ditch that drained a rather large flat before it emptied into the Tennessee River. There were some nice fish gathering just a few feet from the ditch that we caught ripping spoons off the bottom

Be the best angler you can be by learning to use your electronics to their full potential. For your personalized "On the water Sonar Class" contact Lowrance Pro Staffer Randy Kuhens at rk@kicknbass.net.

The "On the Water Sonar Class" is a one on one, hands on, in your boat using your electronics instruction that will take your

understanding and know-how to another level. We get it and you will too!

Kick'n Bass' 7 Essential Steps to Simplify Using Your HDS System.

Kick'n Bass will perform the following ...

- 1. Complete a detailed inspection on your system to certify the installation has been done to factory specs. (If adjustments are required technicians are available to fine tune your system prior to beginning your class. Doing so assures you that your system will perform at an optimum level and you'll get the most out of your time on the water).***
- 2. Check all network settings for compatibility and make adjustments if needed.***
- 3. Program the individual screens and install the overlay data that is best suits the type fishing you do. Example: Depth, Water Temp, Time, etc. Eliminate unwanted, non-practical on screen clutter that hampers using your unit to its maximum potential.***
- 4. Arrange the screens so that going from page to page is orderly and non-confusing. You'll become familiar with the screens and commands and what they'll do for you.***
- 5. Dial in Sonar and Structure Scan Graphics and choose appropriate Palette for the lakes you fish.***
- 6. Demonstrate the art of waypoint management. No more cluttered maps with useless or unproductive waypoints. You'll learn to identify which locations are waypoint worthy and how to go back to those locations without ever assigning a waypoint. You'll assign a waypoint once you are satisfied the location is worth saving.***
- 7. Demo the unit so you'll be able to take advantage of its fish finding capabilities. You'll learn to identify shell beds, submerged stumps, brush piles, ledges, game fish species and more.***

As a bonus Kick'n Bass will help you learn to read an electronic topo map and find "places of interest" that could be potential fishing hot spots.

Smart Bracket Console Mounting Available for

Most Makes and Models of Boats

Order Now! 270-703-6133



Nitro Z-7

The Finished Product ... Just the Right Location & View !

**Ranger & Ranger Aluminum, Triton, Skeeter, Phoenix,
Nitro, Bass Cat and more ...**

**Be sure and Check out our webpage for more photos and
other Sonar Accessories. <http://kicknbass.net/sonar-accessories.php>**