



To Book a trip call 270-703-6133 or visit our website

www.kicknbass.net

Aug. 29, 2014

Lake Conditions

This week both lakes are approximately 2.5 feet below summer pool and falling slightly during the seasonal drawdown. For more information including a generation schedule visit the TVA website at http://www.tva.gov/lakes/kyh_r.htm

Both lakes range from cloudy in some of the creeks with the main lake and larger bays generally clear. Surface water temps on both lakes are in the 82 degree range and trending higher in the afternoons on sunny days.

Weather Outlook

Friday...Mostly sunny. Highs in the lower 90s. South winds 5 to 10 mph.

Friday Night...Partly cloudy with a 20 percent chance of showers and thunderstorms. Lows in the lower 70s. South winds around 5 mph.

Saturday...Showers and thunderstorms likely. Highs in the upper 80s. Southwest winds 5 to 10 mph. Chance of precipitation 60 percent. **Saturday Night**...Showers and thunderstorms likely. Lows in the lower 70s. South winds 5 to 10 mph. Chance of precipitation 60 percent.

Sunday...Showers and thunderstorms likely in the morning...Then a chance of showers and thunderstorms in the afternoon. Highs in the lower 80s. Chance of precipitation 60 percent.

Sunday Night...Mostly cloudy. A 20 percent chance of showers and thunderstorms in the evening. Lows in the lower 70s.

Labor Day...Partly sunny with a 40 percent chance of showers and thunderstorms. Highs in the upper 80s. **Monday Night**...Partly cloudy with a 40 percent chance of showers and thunderstorms. Lows in the lower 70s.

Prime Feeding Times for Kentucky & Barkley Lakes

Date	Sun Data	Moon Data	Moon Phase	Major Activity Times	Minor Activity Times	Prediction
Friday 5/30/2014	Rises: 5:36 am Sets: 8:05 pm	Rises: 7:18 am Sets: 9:43 pm Over: 2:32 pm Under: 2:07 am	4% Waxing Crescent	2:07 am-4:07 am 2:32 pm-4:32 pm	7:18 am-8:18 am 9:43 pm-10:43 pm	*** Better
Saturday 5/31/2014	Rises: 5:35 am Sets: 8:06 pm	Rises: 8:09 am Sets: 10:25 pm Over: 3:20 pm Under: 2:56 am	8% Waxing Crescent	2:56 am-4:56 am 3:20 pm-5:20 pm	8:09 am-9:09 am 10:25 pm-11:25 pm	** Good
Sunday 6/1/2014	Rises: 5:35 am Sets: 8:06 pm	Rises: 9:03 am Sets: 11:05 pm Over: 4:07 pm Under: 3:44 am	14% Waxing Crescent	3:44 am-5:44 am 4:07 pm-6:07 pm	9:03 am-10:03 am 11:05 pm-12:05 am	* Average
Monday 6/2/2014	Rises: 5:34 am Sets: 8:07 pm	Rises: 9:57 am Sets: 11:40 pm Over: 4:52 pm Under: 4:30 am	22% Waxing Crescent	4:30 am-6:30 am 4:52 pm-6:52 pm	9:57 am-10:57 am 11:40 pm-12:40 am	* Average
Tuesday 6/3/2014	Rises: 5:34 am Sets: 8:07 pm	Rises: 10:52 am Sets: --:-- Over: 5:36 pm Under: 5:15 am	30% Waxing Crescent	5:15 am-7:15 am 5:36 pm-7:36 pm	10:52 am-11:52 am --:-----:--	* Average
Wednesday 6/4/2014	Rises: 5:34 am Sets: 8:08 pm	Rises: 11:47 am Sets: 12:13 am Over: 6:20 pm Under: 5:58 am	39% Waxing Crescent	5:58 am-7:58 am 6:20 pm-8:20 pm	12:13 am-1:13 am 11:47 am-12:47 pm	* Average
Thursday 6/5/2014	Rises: 5:34 am Sets: 8:09 pm	Rises: 12:41 pm Sets: 12:44 am Over: 7:02 pm Under: 6:41 am	50% First Quarter	6:41 am-8:41 am 7:02 pm-9:02 pm	12:44 am-1:44 am 12:41 pm-1:41 pm	* Average

Catch Fish & Have Fun on the *Kick'n Bass Pontoon*

Have a Blast on the Kick'n Bass Pontoon. We furnish the rods & reels and lures, clean and package your catch. It's the BEST VALUE on the lake!

Families and Groups Welcome and Corporate Trips are our Specialty. We appreciate folks with Special Needs.

Book Your Trip NOW! Call 270-703-6133



The David Goerke group had a great trip with us this week fishing from the Kick'n Bass Pontoon to catch some huge Catfish and White Bass.

Check out our video on Illinois Outdoors TV on Trolling Crank Baits for Crappie ...

<https://www.youtube.com/watch?v=nVGnbN5tvSw&list=UUUA XuK-wS4XHVYy6Bo4GnaQ>

White Bass fishing gets top billing again this week as big numbers and size are the norm. The big

*schools are finally beginning to show up along the Tennessee River channel ledges. Some of the bigger fish have been suspended 20 feet deep with big schools of baitfish over much deeper water. **Ken's Hybrid Spinner**, made locally by Master Lure Designer Ken McGregor, has been absolutely the hottest lure bar none. Make a long cast and let the lure settle on the bottom and then rip it off the bottom and continue with a steady retrieve. As always a Steel Shad blade bait is a good backup plan.*

Catfish ... It's insane how good catfishing is. We've managed to catch a bunch everyday on either a Ken's Hybrid spinner or a Steel Shad whether we're bass fishing from the Ranger boat or the Pontoon. So if Catfish is your thing the time is NOW !. They're on the ledges 15-20 feet deep next to deeper water. Their stomachs are full of Mayfly larva so for best results keep your bait on or near the bottom using a slow yo-yo retrieve.

Ken's Hybrid Spinner for White, Hybrid, Yellow Bass and Largemouth Too!

Every now and then a truly great bait comes along and **Ken's Hybrid Spinner** is no exception. Not new to the Lakes area but maybe new to you, I can tell you that this lure is a fish catching machine and a staple in Kick'n Bass tackle box. Master lure designer and maker Ken McGregor, owner of the Fisherman's Friend in Lake City, Ky. has made numerous handcrafted baits that anglers swear by but none is any more effective than the Hybrid Spinner.

You see, the Hybrid Spinner is not your ordinary in line spinner bait and a lot of unique elements and attention to detail goes into every lure. As an example, a special heavy gauge French blade is used rather than the elongated willow leaf blade found on competitive products. The French blade starts spinning the moment it enters the water creating instant vibration, which attracts the fish. In other words you don't have to pump the rod or vary the retrieve to get the blade started. Doubling the beads between the blade and the lure body enables the blade to produce maximum flash at all speeds. You can fish the bait slow or fast, deep or on top to match the mood of the fish. No more bent lures or hooks either. The extra heavy gauge wire used in the body of the lure retains its shape even after repeated encounters with better than average fish. Premium hooks are used that stay sharp and retain their shape. There's a size and color for nearly every fish that swims too; from a 1/32 oz. bluegill and redear bait all the way up to a 1½ oz. size used for Stripers and everything in between.

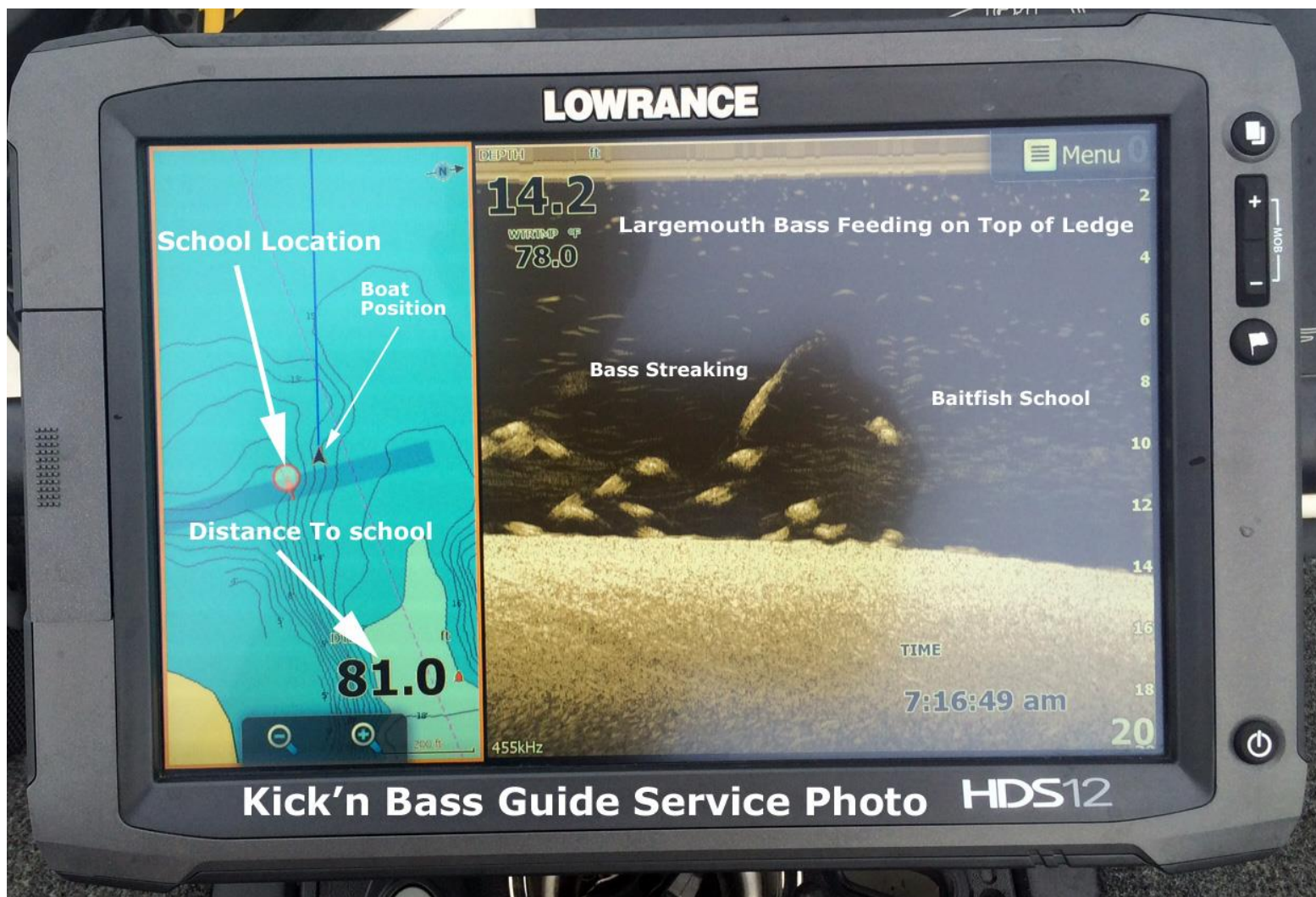
You can find the Ken's Hybrid Spinner at area tackle shops or call The Fisherman's Friend at (270-362-4323). Just so you'll know ... Ken McGregor won't put his name on anything that won't catch fish and his Hybrid Spinner is no exception!



Bass Fishing ... Fishing has been very good especially in the afternoons during favorable feeding times and current generation. With the extreme heat and the demand for electricity TVA is running four generators from Midnight to Midnight and this is creating lots of current in the upper lake. Largemouth bass are relating to offshore shell beds where schools of baitfish are congregating. The mouths of the bays are another prime location where schools of bass are gathering. A Steel Shad blade bait and a shad colored SPRO crank bait are catching their fair share. Large white Bass are mixed in with the bass. To extend the bite your best bet is to have a back up plan when the fish go to the bottom like dragging a ZMan Shakey Head or a PJ's jig.

White bass ... As mentioned before fishing has been great for those clients fishing from the pontoon. We're catching some big fish on the ledges and the mouth of the bays on a Steel Shad blade bait and Ken's Hybrid Spinner.

Sonar Tip Of The Week Featuring Lowrance High Definition Sonar Systems



The screen shows a school of big bass feeding on baitfish on a deep flat located next to an underwater ledge. The ledge tapered to about 18 feet before it dropped into the Tennessee River channel.

The Chart screen shows the location of the school as well as the distance and direction the boat is positioned from the school. Using our HDS 12 Bow unit with the HDI Transducer we relocated the school and situated the boat within easy casting distance. A Steel Shad blade bait was counted down to 10 feet, using a side sweep motion my clients and I worked the school over pretty good catching some very nice bass. Gold was the best color.

Be the best angler you can be by learning to use your electronics to their full potential. For your personalized "On the water Sonar Class" contact Lowrance Pro Staffer Randy Kuhens at rk@kicknbass.net.

Remember ... The first step in our "On the Water Sonar Class" is to perform an inspection of your system to make sure the installation has been done to factory specs and all components are installed in the proper location. If adjustments are needed we can have them made prior to beginning your class. Doing so assures you that your system will perform at a high level and you'll get the most out of your time on the water. You've made a Significant Investment in Electronics. Be the best angler you can be by learning to use your electronics to their full potential. For your personalized "On the water Sonar Class" contact Lowrance Pro Staffer Randy Kuhens at rk@kicknbass.net

Here's what some of our clients had to say about their "On the Water Sonar Class"

Randy, thanks for going the extra mile to see that my system was set up properly. The old saying "You don't know what you don't know" holds true. I thought my system was working ok. Now I can see that it wasn't but now is. The class was great and I'll recommend all my buddies in the bass club contact you to do take the class.

Ford Fredericks – St. Joseph, Illinois.

Randy, it's quite a surprise when something is better than advertised. Your class helped me immensely.

Robert Jones – Columbia, MO.

The "On the Water Sonar Class" is a one on one, hands on, in your boat using your electronics instruction that will take your understanding and know-how to another level. We get it and you will too!

Kick'n Bass' 7 Essential Steps to Simplify Using Your HDS System.

Kick'n Bass will perform the following ...

- 1. Complete a detailed inspection on your system to certify the installation has been done to factory specs. (If adjustments are required technicians are available to fine tune your system prior to beginning your class. Doing so assures you that your system will perform at an optimum level and you'll get the most out of your time on the water).**
- 2. Check all network settings for compatibility and make adjustments if needed.**
- 3. Program the individual screens and install the overlay data that is best suits the type fishing you do. Example: Depth, Water Temp, Time, etc. Eliminate unwanted, non-practical on screen clutter that hampers using your unit to its maximum potential.**

4. Arrange the screens so that going from page to page is orderly and non-confusing. You'll become familiar with the screens and commands and what they'll do for you.
5. Dial in Sonar and Structure Scan Graphics and choose appropriate Palette for the lakes you fish.
6. Demonstrate the art of waypoint management. No more cluttered maps with useless or unproductive waypoints. You'll learn to identify which locations are waypoint worthy and how to go back to those locations without ever assigning a waypoint. You'll assign a waypoint once you are satisfied the location is worth saving.
7. Demo the unit so you'll be able to take advantage of its fish finding capabilities. You'll learn to identify shell beds, submerged stumps, brush piles, ledges, game fish species and more.

As a bonus Kick'n Bass will help you learn to read an electronic topo map and find "places of interest" that could be potential fishing hot spots.

Smart Bracket Console Mounting Available for

Most Makes and Models of Boats

Order Now! 270-703-6133



**Ranger & Ranger Aluminum, Triton, Skeeter, Phoenix,
Nitro, Bass Cat and more ...**

Be sure and Check out our webpage for more photos and

other Sonar Accessories. <http://kicknbass.net/sonar-accessories.php>