



To Book a trip call 270-703-6133 or visit our website
www.kicknbass.net

Aug. 8, 2014

Lake Conditions

This week both lakes are about a foot and a half below summer pool and falling slightly during the seasonal drawdown. For more information including a generation schedule visit the TVA website at http://www.tva.gov/lakes/kyh_r.htm

Both lakes range from cloudy in some of the creeks with the main lake and larger bays generally clear. Surface water temps on both lakes are in the 80 degree range and trending higher in the afternoons on sunny days.

Weather Outlook

Friday...Showers and thunderstorms likely. Highs in the mid 80s. Southwest winds 5 to 10 mph. Chance of precipitation 70 percent. **Friday Night**...Mostly cloudy with a 50 percent chance of showers and thunderstorms. Lows around 70. South winds 5 mph.

Saturday...Mostly cloudy with a 30 percent chance of showers and thunderstorms. Highs in the upper 80s. West winds 5 to 10 mph. **Saturday Night**...Mostly cloudy in the evening then becoming partly cloudy. A 20 percent chance of showers and thunderstorms. Lows in the lower 70s. West winds 5 mph.

Sunday...Partly sunny with a 20 percent chance of showers and thunderstorms. Highs in the upper 80s. **Sunday Night**...Mostly cloudy with a 30 percent chance of showers and thunderstorms. Lows in the upper 60s.

Monday...Partly sunny with a 40 percent chance of showers and thunderstorms. Highs in the upper 80s. **Monday Night**...Partly cloudy. A 20 percent chance of showers and thunderstorms. Lows in the upper 60s. Highs in the upper 80s.

Prime Feeding Times for Kentucky & Barkley Lakes

Date	Sun Data	Moon Data	Moon Phase	Major Activity Times	Minor Activity Times	Prediction
Friday 8/8/2014	Rises: 6:03 am Sets: 7:52 pm	Rises: 6:02 pm Sets: 3:37 am Over: 11:23 pm Under: 10:53 am	94% Waxing Gibbous	10:53 am-12:53 pm 11:23 pm-1:23 am	3:37 am-4:37 am 6:02 pm-7:02 pm	★★ Good
Saturday 8/9/2014	Rises: 6:04 am Sets: 7:51 pm	Rises: 6:52 pm Sets: 4:45 am Over: --:-- Under: 11:53 am	98% Waxing Gibbous	--:--:-- 11:53 am-1:53 pm	4:45 am-5:45 am 6:52 pm-7:52 pm	★★★ Better
Sunday 8/10/2014	Rises: 6:05 am Sets: 7:50 pm	Rises: 7:38 pm Sets: 5:57 am Over: 12:23 am Under: 12:52 pm	100% FULL MOON	12:23 am-2:23 am 12:52 pm-2:52 pm	5:57 am-6:57 am 7:38 pm-8:38 pm	★★★★★ Best
Monday 8/11/2014	Rises: 6:06 am Sets: 7:49 pm	Rises: 8:20 pm Sets: 7:09 am Over: 1:21 am Under: 1:50 pm	99% Waning Gibbous	1:21 am-3:21 am 1:50 pm-3:50 pm	7:09 am-8:09 am 8:20 pm-9:20 pm	★★★ Better
Tuesday 8/12/2014	Rises: 6:07 am Sets: 7:48 pm	Rises: 9:00 pm Sets: 8:20 am Over: 2:18 am Under: 2:45 pm	94% Waning Gibbous	2:18 am-4:18 am 2:45 pm-4:45 pm	8:20 am-9:20 am 9:00 pm-10:00 pm	★★★ Better
Wednesday 8/13/2014	Rises: 6:08 am Sets: 7:46 pm	Rises: 9:39 pm Sets: 9:30 am Over: 3:12 am Under: 3:39 pm	87% Waning Gibbous	3:12 am-5:12 am 3:39 pm-5:39 pm	9:30 am-10:30 am 9:39 pm-10:39 pm	★ Average
Thursday 8/14/2014	Rises: 6:08 am Sets: 7:45 pm	Rises: 10:17 pm Sets: 10:38 am Over: 4:05 am Under: 4:32 pm	79% Waning Gibbous	4:05 am-6:05 am 4:32 pm-6:32 pm	10:38 am-11:38 am 10:17 pm-11:17 pm	★ Average

Catch Fish & Have Fun on the Kick'n Bass Pontoon

Have a Blast on the Kick'n Bass Pontoon. We furnish the rods & reels and lures, clean and package your catch. It's the BEST VALUE on the lake!

Families and Groups Welcome and Corporate Trips are our Specialty. We appreciate folks with Special Needs.

Call NOW 270-703-6133

Jordan Burge, Tim Fulton, Ivan Aska and NBA's Houston Rockets Point Guard Isaiah Cannon had a great day on the Kick'n Bass Pontoon catching some huge White Bass.



White Bass fishing gets top billing this week as big numbers and size are the norm. The big schools are finally beginning to show up along the Tennessee River channel ledges. Some of the bigger fish have been suspended 20 feet deep with big schools of baitfish over much deeper water. **Ken's Hybrid Spinner**, made locally by Master Lure Designer Ken McGregor, has been absolutely the hottest lure bar none. Make a long cast and let the lure settle on the bottom and then rip it off the bottom and continue with a steady retrieve. As always a Steel Shad blade bait is a good backup plan.

Ken's Hybrid Spinner for White & Yellow Bass and Largemouth Too!



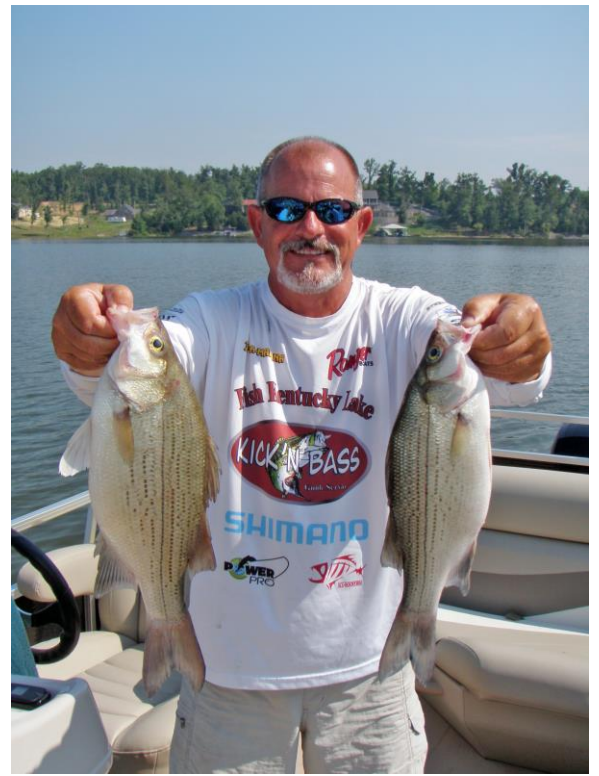
Every now and then a truly great bait comes along

and **Ken's Hybrid Spinner** is no exception. Not new to the Lakes area but maybe new to you, I can tell you that this lure is a fish catching machine and a staple in Kick'n Bass tackle box. Master lure designer and maker Ken McGregor, owner of the Fisherman's Friend in Lake City, Ky. has made numerous handcrafted baits that anglers swear by but none is any more effective than the Hybrid Spinner.

You see, the Hybrid Spinner is not your ordinary in line spinner bait and a lot of unique elements and attention to detail goes into every lure. As an example, a special heavy gauge French blade is used rather than the elongated willow leaf blade found on competitive products. The French blade starts spinning the moment it enters the water creating instant vibration, which attracts

the fish. In other words you don't have to pump the rod or vary the retrieve to get the blade started. Doubling the beads between the blade and the lure body enables the blade to produce maximum flash at all speeds. You can fish the bait slow or fast, deep or on top to match the mood of the fish. No more bent lures or hooks either. The extra heavy gauge wire used in the body of the lure retains its shape even after repeated encounters with better than average fish. Premium hooks are used that stay sharp and retain their shape. There's a size and color for nearly every fish that swims too; from a 1/32 oz. bluegill and redear bait all the way up to a 1½ oz. size used for Stripers and everything in between.

You can find the Ken's Hybrid Spinner at area tackle shops or call The Fisherman's Friend at (270-362-4323). Just so you'll know ... Ken McGregor won't put his name on anything that won't catch fish and his Hybrid Spinner is no exception!



Bass Fishing ... With a return of some Southerly winds this week and longer periods of current created by extended generation schedules at the Dam Bass fishing has been significantly better. We found active schools at the mouth of the bays and the ledge bite has been much improved. With the return of more favorable feeding times this week we can expect a pretty good week of fishing. As usual we'll be

on the water every day and I'm looking forward to this weeks fishing. Our best lures this week were the Shakey Head combos consisting of a ¼ oz. PJ's Bass Extractor jig and ZMan Finesse worm and Dragging a ½ ounce PJ's freestyle Football head with a 10 ½" Zman worm. SPRO deep diving crank baits produced a few fish cranking shallow ledges as did **Ken's Magnum Ledge Spoon**. Best depths on the ledges has been 13-15 feet.

Dock Pattern ... *I keep bring this patter to you attention because it has been productive.* With the water being drawn down this pattern has waned a little but is still good enough to talk about it. Using spinning gear with 6lb line and a Zman ZINKERZ (*Senko type lure*) casting WACKY style, we caught some fish around boat docks especially those on the main lake and with spud poles. The ElaZtech construction makes this the most durable stick bait on the market and it's loaded with salt so it sinks at a controlled, slow rate when rigged weightless. The tough material allows you to wacky rig without the use of O-rings or other devices. With the young of the year fry approaching 1-2 inches the larger shad and bluegill are having are having a field day and the bass are taking advantage of the shad and bluegill. When things slow up or you can't fish where you want boat docks are a good way to go.

Top Water ... early and late surface action has been only fair on both white bass and largemouth as the two species are schooling together and herding baitfish. Prime locations are around boat docks and gravel points at the mouth of the bays.

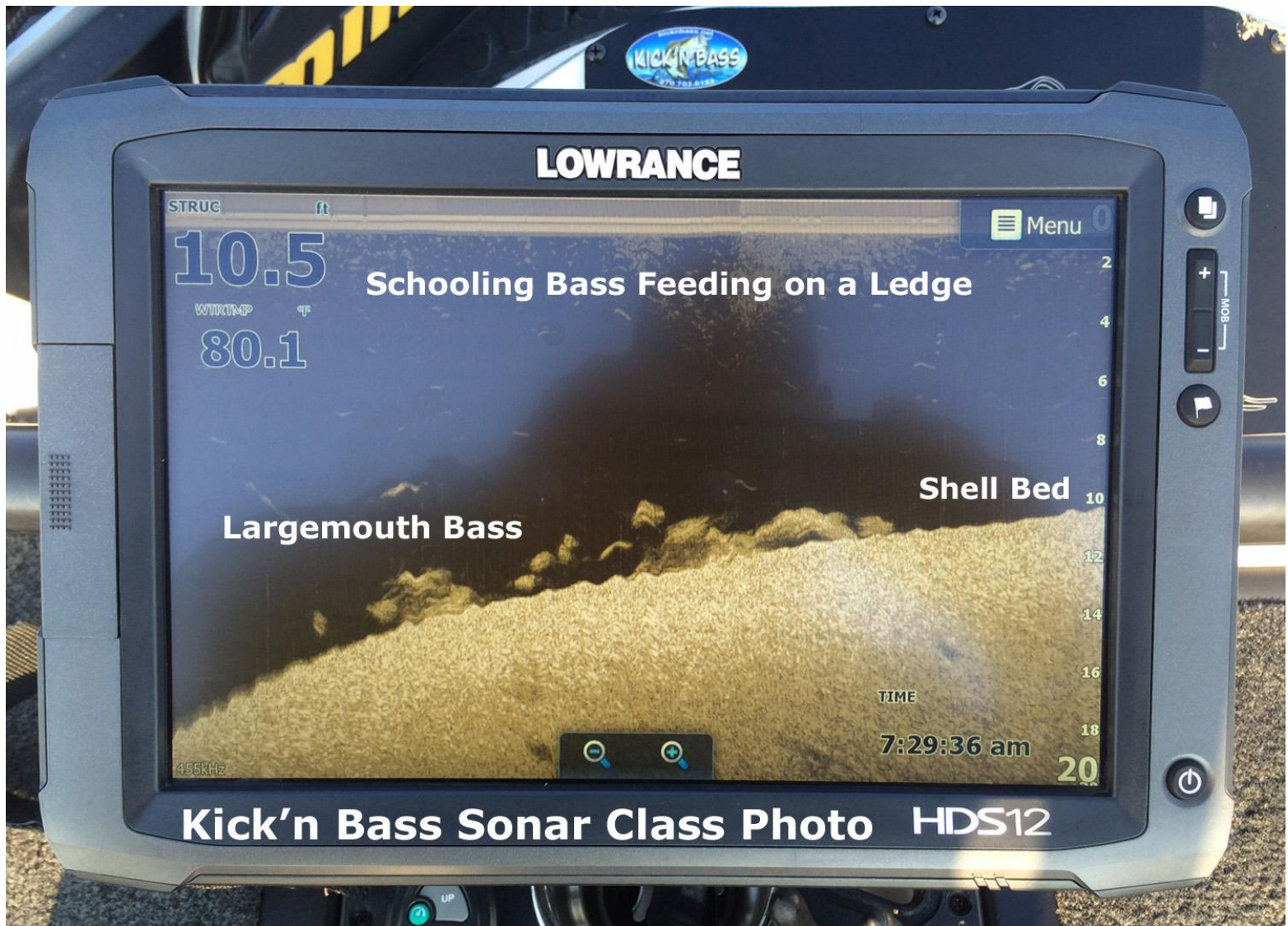
Crappie ... Trolling cranks for crappie has been consistent for our clients this week. Capt. Rich has been trolling SPRO cranks deep 16-19 feet and catching some big blacks and whites. The numbers have been respectable each day.

White bass ... As mentioned before fishing has been great for those clients fishing from the pontoon. We're catching some big fish on the ledges and the mouth of the bays on a Steel Shad blade bait and **Ken's Hybrid Spinner**.

Bluegill ... Fair still good numbers being caught by our clients this week using a Shelton's Bluegill bug and a Ken's cricket with and without a live cricket. Fishing a cricket under an ESB slip bobber was a strong second.

Catfish ... fair on the top of the ledges next to deeper water 20 plus on Stink Baits and a Steel Shad blade bait when fishing for white bass.

***Sonar Tip Of The Week Featuring
Lowrance High Definition Sonar Systems***



It never hurts to just take time to look around! We found this school of active fish next to the Tennessee River and marked their location. Later we fished this spot and others like it and had a very nice day of fishing. We didn't catch any real big fish but lots of three pounders. The key was finding active fish on shell beds where the ledge made a significant drop. The bass were feeding on crayfish and we used a 1/2 jig to catch all our fish.

Be the best angler you can be by learning to use your electronics to their full potential. For your personalized "On the water Sonar Class" contact Lowrance Pro Staffer Randy Kuhens at rk@kicknbass.net.

Remember ... The first step in our "On the Water Sonar Class" is to perform an inspection of your system to make sure the installation has been done to factory specs and all components are installed in the proper location. If adjustments are needed we can have them made prior to beginning your class. Doing so assures you that your system will perform at a high level and you'll get the most out of your time on the water. You've made a Significant Investment in Electronics. Be the best angler you can be by learning to use your electronics to their full potential. For your personalized "On the water Sonar Class" contact Lowrance Pro Staffer Randy Kuhens at rk@kicknbass.net

Here's what some of our clients had to say about their "On the Water Sonar Class"

Randy, what a great day my wife and I had with you. After the class we fished for several hours and just like you said we found fish, went back to them and caught them on a variety of lures. No way could we have done that prior to the class. The class was great. We'll book a fishing trip with you soon.

Carlton Davis – Marietta, Ga.

Randy, Wow what a great class. It exceeded my expectations. Can't wait to get to Erie and put it into practice there.

Phil Valencio – Port Clinton, OH.

The "On the Water Sonar Class" is a one on one, hands on, in your boat using your electronics instruction that will take your understanding and know-how to another level. We get it and you will too!

Kick'n Bass' 7 Essential Steps to Simplify Using Your HDS System.

Kick'n Bass will perform the following ...

- 1. Complete a detailed inspection on your system to certify the installation has been done to factory specs. (If adjustments are required technicians are available to fine tune your system prior to beginning your class. Doing so assures you that your system will perform at an optimum level and you'll get the most out of your time on the water).***
- 2. Check all network settings for compatibility and make adjustments if needed.***
- 3. Program the individual screens and install the overlay data that is best suits the type fishing you do. Example: Depth, Water Temp, Time, etc. Eliminate unwanted, non-practical on screen clutter that hampers using your unit to its maximum potential.***
- 4. Arrange the screens so that going from page to page is orderly and non-confusing. You'll become familiar with the screens and commands and what they'll do for you.***
- 5. Dial in Sonar and Structure Scan Graphics and choose appropriate Palette for the lakes you fish.***
- 6. Demonstrate the art of waypoint management. No more cluttered maps with useless or unproductive waypoints. You'll learn to identify which locations are waypoint worthy and how to go back to those locations without ever assigning a waypoint. You'll assign a waypoint once you are satisfied the location is worth saving.***

7. Demo the unit so you'll be able to take advantage of its fish finding capabilities. You'll learn to identify shell beds, submerged stumps, brush piles, ledges, game fish species and more.

As a bonus Kick'n Bass will help you learn to read an electronic topo map and find "places of interest" that could be potential fishing hot spots.

**Smart Bracket Console Mounting for
Nitro Z-7 & Nitro Z-8 & 7-9
System Now Available.
Order Now! 270-703-6133**



**Be sure and Check out our webpage for more photos and
other Sonar Accessories. <http://kicknbass.net/sonar-accessories.php>**

**Campers and RV'ers Check out the KY Dam
Village Campground!**

Kentucky Dam Village is one of three resort parks on the waters surrounding Land Between the Lakes National Recreation Area; a 170,000 acre wooded peninsula bound by Kentucky Lake and Lake Barkley. The abundance of water offers uncrowded cruising, water skiing, snorkeling and fishing. With its wide choice of accommodations, excellent marina and fine dining, Kentucky Dam Village is one of Kentucky's most popular resorts.

Vital Statistics

Open from April 1 – Oct. 31st

Campsites – 200 w/ water & Electricity **Bath Houses and Dump Stations** – 3

Cost - \$22 per nite week days & \$24 per nite week ends

Discounts – Senior & Veterans **Also check out** www.Groupon.com

Specials Starting August 1st

\$74 for 2 nites stay which includes a \$100 coupon to be used at KY Dam Marina towards a watercraft rental.

\$139 for a 4 nites stay which includes a \$200 coupon to be used at KY Dam Marina towards a watercraft rental.

To make a reservation call Kentucky Dam Village State Park (270) 362-4271
link below ...

or check out the

<http://kentuckystateparks.reserveamerica.com/camping/kentucky-dam-village-state-resort-park/r/campgroundDetails.do?contractCode=KY&parkId=91909>

HOOKED ON SCOUTING BASS TOURNAMENT

When: Saturday August 9, 2014 **Where:** Kentucky Dam Marina

Times: Registration 4am CST **Launch Time** - 6am - 2pm CST

Registration Fee - \$150 per boat 2 contestants per boat only.

Payout – 70% Payback - 20% of field - \$2500 Guaranteed First Place

Proceeds will benefit the Lincoln Heritage Council, Boy Scouts of America