



**To Book a trip call 270-703-6133 or visit our website**

**[www.kicknbass.net](http://www.kicknbass.net)**

**July 18, 2014**

## **Lake Conditions**

This week both lakes are about a half a foot below summer pool and falling slightly as TVA begins it's seasonal drawdown. For more information including a generation schedule visit the TVA website at [http://www.tva.gov/lakes/kyh\\_r.htm](http://www.tva.gov/lakes/kyh_r.htm)

## **Water Clarity and Temperature**

Both lakes range from cloudy in some of the creeks with the main lake and larger bays generally clear. Surface water temps on both lakes are in the 80 degree range and trending higher in the afternoons on sunny days.

## **Weather Outlook**

**Today**...Mostly cloudy. A slight chance of showers in the morning...Then a slight chance of showers and thunderstorms in the afternoon. Highs in the upper 70s. East winds 5 mph. Chance of precipitation 20 percent.

**Tonight**...Mostly cloudy with a 20 percent chance of showers and thunderstorms. Lows in the lower 60s. Southeast winds 5 mph.

**Saturday**...Mostly cloudy. Highs around 80. Southeast winds 5 mph.

**Saturday Night**...Partly cloudy in the evening then becoming mostly cloudy. Lows in the mid 60s. Southeast winds 5 mph.

**Sunday**...Partly sunny. Highs in the mid 80s. Southeast winds 5 mph.

**Sunday Night**...Partly cloudy. Lows in the upper 60s.

**Monday**...Partly sunny with a 20 percent chance of showers and thunderstorms. Highs in the upper 80s.

**Monday Night**...Partly cloudy. Lows around 70.

**Tuesday**...Partly sunny with a 20 percent chance of showers and thunderstorms. Highs around 90.

**Tuesday Night**...Partly cloudy. Lows in the lower 70s.

**Wednesday**...Partly cloudy. A 30 percent chance of showers and thunderstorms. Highs in the lower 90s. Lows in the lower 70s.

**Wednesday Night**...Partly cloudy. A 30 percent chance of showers and thunderstorms. Highs in the lower 90s. Lows in the lower 70s.

**Thursday**...Partly sunny a 40 percent chance of showers and thunderstorms. Highs in the upper 80s.

# How Barometric Pressure Affects Fishing

It I have known for a while that the barometric pressure affects fishing, but sometimes I forget to take this into consideration when I'm on my guide trips. Maybe if I'd just remember to take the time to check barometric pressure and how it's trending then maybe I'd be more efficient angler and a better fishing guide. A couple days of subpar fishing this week has caused me to step back and look at how this unusually cooler weather were having has affected our fishing.

Last night I looked at the National weather map on the web. I could see those blue "H"s and red "L"s indicating areas of High and Low pressure with the High pressure areas being those with the most favorable weather. The Kentucky Lake area, over the last several days has been experiencing a **Super High Pressure** weather system whereby we've had clear blue skies, very windy or little or no wind at times and unusually cooler temperatures. Fishing at times has been slow; this time of year we normally experience some of our best fishing. That being the case I've done a little research to help put things into perspective and to better prepare myself for the future. This is what I found out ...

Barometric pressure has an effect on fishing. How the pressure directly effects the fish is still not fully understood, but knowing how to use the barometric pressure readings can greatly increase your chances of having a successful fishing trip.

What is Barometric Pressure anyway? It is the measure of the weight of the atmosphere above us exerting pressure on the waters we fish. It changes how fish and game feel and affects their feeding habits. The barometric pressure changes as weather systems change. Weathermen use the Barometric Pressure to predict the weather and it can also be used by fishermen to predict how fishing will be and more importantly how to fish.

Here's an idea of what you can expect depending on the Barometric Pressure.

<b>Barometric Pressure</b>	<b>Typical Weather</b>	<b>Fishing Trends</b>
High	Clear Skies	Fishing is slow, go deep or fish very tight to cover
Rising	Clearing	Fishing is improving
Normal / Stable	Fair	Normal fishing
Falling	Degrading	Best fishing occurs
Slightly Lower	Cloudy	Fish go shallower and become aggressive
Low	Rainy & Stormy	Fish are less active

The best times to fish is when the barometric pressure is falling and when it's between 29.90 - 30.90. This is when fish will be most active.

You could check the barometric pressure online like I did this morning but probably a better idea would be to get a hand-held barometer so you can keep an eye on the pressure in real-time. That way when the pressure starts moving in a favorable direction you can plan accordingly.

## Prime Feeding Times for Kentucky & Barkley Lakes

Date	Sun Data	Moon Data	Moon Phase	Major Activity Times	Minor Activity Times	Prediction
Friday 7/18/2014	Rises: 5:47 am Sets: 8:10 pm	Rises: --- Sets: 12:52 pm Over: 6:14 am Under: 6:39 pm	50% Last Quarter	6:14 am-8:14 am 6:39 pm-8:39 pm	--- Sets: 12:52 pm 12:52 pm-1:52 pm	☉ Average
Saturday 7/19/2014	Rises: 5:48 am Sets: 8:09 pm	Rises: 12:18 am Sets: 1:55 pm Over: 7:04 am Under: 7:29 pm	43% Waning Crescent	7:04 am-9:04 am 7:29 pm-9:29 pm	12:18 am-1:18 am 1:55 pm-2:55 pm	☉ Average
Sunday 7/20/2014	Rises: 5:49 am Sets: 8:09 pm	Rises: 12:57 am Sets: 2:54 pm Over: 7:54 am Under: 8:19 pm	33% Waning Crescent	7:54 am-9:54 am 8:19 pm-10:19 pm	12:57 am-1:57 am 2:54 pm-3:54 pm	☉ Average
Monday 7/21/2014	Rises: 5:49 am Sets: 8:08 pm	Rises: 1:39 am Sets: 3:52 pm Over: 8:44 am Under: 9:09 pm	24% Waning Crescent	8:44 am-10:44 am 9:09 pm-11:09 pm	1:39 am-2:39 am 3:52 pm-4:52 pm	☉ Average
Tuesday 7/22/2014	Rises: 5:50 am Sets: 8:07 pm	Rises: 2:22 am Sets: 4:45 pm Over: 9:34 am Under: 9:59 pm	16% Waning Crescent	9:34 am-11:34 am 9:59 pm-11:59 pm	2:22 am-3:22 am 4:45 pm-5:45 pm	☉ Average
Wednesday 7/23/2014	Rises: 5:51 am Sets: 8:07 pm	Rises: 3:09 am Sets: 5:36 pm Over: 10:23 am Under: 10:48 pm	9% Waning Crescent	10:23 am-12:23 pm 10:48 pm-12:48 am	3:09 am-4:09 am 5:36 pm-6:36 pm	☉☉ Good
Thursday 7/24/2014	Rises: 5:52 am Sets: 8:06 pm	Rises: 3:59 am Sets: 6:21 pm Over: 11:12 am Under: 11:36 pm	5% Waning Crescent	11:12 am-1:12 pm 11:36 pm-1:36 am	3:59 am-4:59 am 6:21 pm-7:21 pm	☉☉☉ Better

### *Fishing Report from the Kick'n Bass Ranger Boat.*

#### Bass Fishing ...

The Ledge bite has been real spotty this week and we've gone thru some periods of tough fishing but none the less, some real good fish have been caught. Most of our fish over 5 pounds have come from the deeper ledges where the larger baitfish schools are more prevalent. Some of the more productive lures have been a ZMan Turbo CrawZ on a ½ oz. PJ's Freestyle Football head jig or Shakey Head combo consisting of a ¼ oz. PJ's Bass Extractor jig and ZMan Finesse worm. There were days when the ZMan Turbo Crawz out produced all other baits combined with or without current or wind.

### **ZMan Turbo CrawZ & PJ's Freestyle Football**

### **Head Jig ... a Great Combination!**



Prior to going to the lake last week we tested this combination in the fish tank at **Bass & Gas**, one of the local tackle shops in the area that sells ZMan products. We found that the slightest movement causes the ZMan Turbo CrawZ to thump and gyrate irresistibly. Also the buoyant nature of the ElaZtech material allows the claws to rise up and assume the defensive posture of a crayfish. Once on the lake we found that slowly dragging or at times deadsticking this combo would produce. Color didn't seem to matter much either, there was no doubt when you had a bite, the bass absolutely crushed the bait and basically set the hook for you. Don't discount using the Turbo CrawZ on a Carolina Rig either. I had one

client this week caught a number of good bass using this method. The Turbo CrawZ is really effective be sure and try it. **Bass & Gas** in Benton and **The Cabin Bait and Tackle** in Kuttawa here in the Lakes area carry a good assortment of Zman products. [www.zmanfishing.com](http://www.zmanfishing.com)

**Dock Pattern ...** Actually this pattern was more consistent than any we had this week but the size of the fish were on the small size with a 3 ¾ pounder being the biggest. Using spinning gear with 6lb line and a Zman ZINKERZ (*Senko type lure*) casting WACKY style, we caught some fish around boat docks especially those on the main lake and with spud poles. The ElaZtech construction makes this the most durable stickbait on the market and it's loaded with salt so it sinks at a controlled, slow rate when rigged weightless. The tough material allows you to wacky rig without the use of O-rings or other devices. With the young of the year fry approaching 1-2 inches the larger shad and bluegill are having a field day and the bass are taking advantage of the shad and bluegill. When things slow up or you can't fish where you want boat docks are a good way to go.

**Top Water ...** early and late surface action has been only fair on both white bass and largemouth as the two species are schooling together and herding baitfish. Prime locations are around boat docks and gravel points at the mouth of the bays. A two-hook version of the **SPRO McStick** is a good choice using a jerk, jerk, pause and the jerk retrieve.

## ***Fishing Report from the Kick'n Bass Pontoon***

***Contact Us Right Away To Get In On the Action !!!***

**Crappie ...** Trolling cranks for crappie has been consistent for our clients this week. Capt. Rich has been trolling SPRO cranks deep 16-19 feet and catching some big blacks and whites. The numbers have been respectable each day.

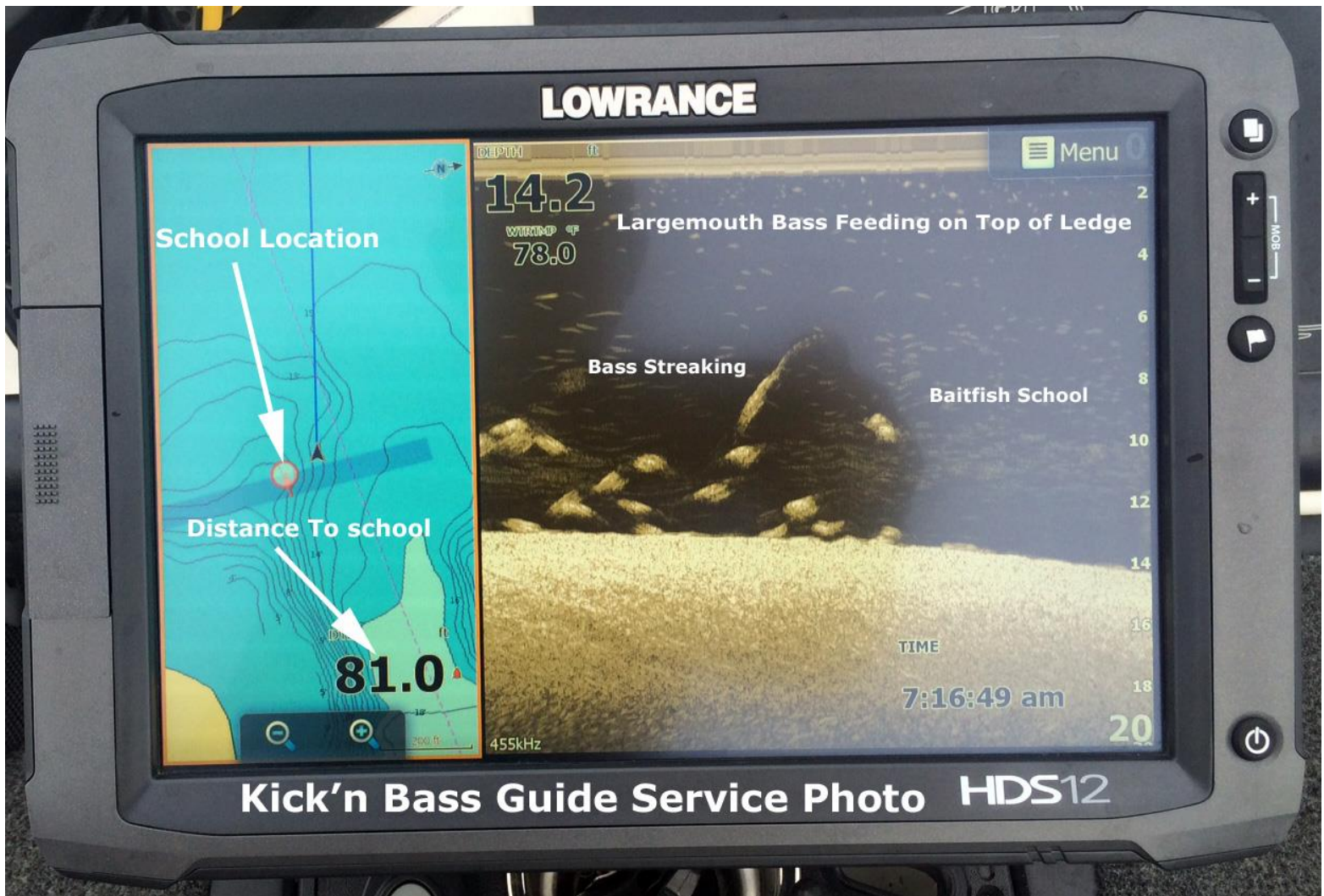
**White bass ...** fishing has been good for those clients fishing from the pontoon. We're catching some big fish on the ledges and the mouth of the bays on a Steel Shad blade bait and Ken's Hybrid Spinner. The fish are just now beginning to school up nicely and good number of big fish are being caught.

**Bluegill ...** Slowing considerably but still good numbers being caught by our clients this week using a Shelton's Bluegill bug and a Ken's cricket with and without a live cricket. Fishing a cricket under an ESB slip bobber was a strong second.

**Catfish ...** fair on the ledges 20-25 deep a Steel Shad blade bait.

***Sonar Tip Of The Week Featuring  
Lowrance High Definition Sonar Systems***





The screen shows a school of big bass feeding on baitfish on a deep flat located next to an underwater ledge. The ledge tapered to about 18 feet before it dropped into the Tennessee River channel.

The Chart screen shows the location of the school as well as the distance and direction the boat is positioned from the school. Using our HDS 12 Bow unit with the HDI Transducer we relocated the school and situated the boat within easy casting distance. A Steel Shad blade bait was counted down to 10 feet, using a side sweep motion my clients and I worked the school over pretty good catching some very nice bass. Gold was the best color.

Locating this school would not have been possible without our Lowrance Touch Screen HDS 12. Be the best angler you can be by learning to use your electronics to their full potential. For your personalized "On the water Sonar Class" contact Lowrance Pro Staffer Randy Kuhens at [rk@kicknbass.net](mailto:rk@kicknbass.net).

**Remember ...** The first step in our "On the Water Sonar Class" is to perform an inspection of your system to make sure the installation has been done to factory specs and all components are installed in the proper location. If adjustments are needed we can have them made prior to beginning your class. Doing so assures you that your system will perform at a high level and you'll get the most out of your time on the water. You've made a Significant Investment in Electronics. Be the best angler you can be by learning to use your electronics to their full potential. For your personalized "On the water Sonar Class" contact Lowrance Pro Staffer Randy Kuhens at [rk@kicknbass.net](mailto:rk@kicknbass.net)

## ***Here's what our clients had to say about their "On the Water Sonar Class"***

*Randy your class is a must for those wanting to learn to use electronics. It helped me more than you'll know! Knowing how to use electronics is a must in today's fishing.*

*Travis Faulkner – Outdoor Writer & Guide*

*Randy, thanks for the patience. I was ready to give up on my electronics. I was so frustrated that I was ready to sell them all and go back to a flasher. Your class changed all of that for the better. I now feel much better about my investment. I know I have to practice to get better but I'm definitely on the right track. Thanks!*

*Ben Patronsky – St. Louis, Mo.*

***The "On the Water Sonar Class" is a one on one, hands on, in your boat using your electronics instruction that will take your understanding and know-how to another level. We get it and you will too!***

### ***Kick'n Bass' 7 Essential Steps to Simplify Using Your HDS System.***

***Kick'n Bass will perform the following ...***

- 1. Complete a detailed inspection on your system to certify the installation has been done to factory specs. (If adjustments are required technicians are available to fine tune your system prior to beginning your class. Doing so assures you that your system will perform at an optimum level and you'll get the most out of your time on the water).***
- 2. Check all network settings for compatibility and make adjustments if needed.***
- 3. Program the individual screens and install the overlay data that is best suited for the type of fishing you do. Example: Depth, Water Temp, Time, etc. Eliminate unwanted, non-practical on-screen clutter that hampers using your unit to its maximum potential.***
- 4. Arrange the screens so that going from page to page is orderly and non-confusing. You'll become familiar with the screens and commands and what they'll do for you.***
- 5. Dial in Sonar and Structure Scan Graphics and choose appropriate Palette for the lakes you fish.***
- 6. Demonstrate the art of waypoint management. No more cluttered maps with useless or unproductive waypoints. You'll learn to identify which locations are waypoint worthy and how to go back to those locations without ever assigning a waypoint. You'll assign a waypoint once you are satisfied the location is worth saving.***



7. Demo the unit so you'll be able to take advantage of its fish finding capabilities. You'll learn to identify shell beds, submerged stumps, brush piles, ledges, game fish species and more.

As a bonus Kick'n Bass will help you learn to read an electronic topo map and find "places of interest" that could be potential fishing hot spots.

**Smart Bracket Console Mounting for  
Phoenix Big Gauge Console  
System Now Available.  
Order Now! 270-703-6133**



**Be sure and Check out our webpage for more photos and other Sonar Accessories. <http://kicknbass.net/sonar-accessories.php>**