



**To Book a trip call 270-703-6133 or visit our website
www.kicknbass.net**

June 6, 2014

Lake Conditions

This week we've had mostly steady conditions until Wednesday nite when we received torrential rains. Currently both lakes are slightly above summer pool. For more information including current generation schedules visit the TVA website at http://www.tva.gov/lakes/kyh_r.htm

Water Clarity and Temperature ...

Both lakes range from cloudy in some of the creeks with the main lake and larger bays clear. Surface water temps on both lakes are in the 75-degree range and trending higher in the afternoons on sunny days.

Weather Outlook

Friday...Mostly cloudy with scattered showers and isolated thunderstorms. Highs in the mid 80s. East winds 5 mph. Chance of precipitation 50 percent.

Friday Night...Mostly cloudy with a slight chance of showers and thunderstorms in the evening...Then partly cloudy after midnight. Lows in the upper 60s. East winds around 5 mph in the evening becoming calm after midnight. Chance of precipitation 20 percent.

Saturday...Partly sunny with a 30 percent chance of showers and thunderstorms. Highs in the mid 80s. East winds 5 mph.

Saturday Night...Partly cloudy. A 20 percent chance of showers and thunderstorms in the evening. Lows in the upper 60s. Southeast winds 5 mph.

Sunday...Partly sunny with a 50 percent chance of showers and thunderstorms. Highs in the mid 80s.

Sunday Night...Partly cloudy with a 20 percent chance of showers and thunderstorms. Lows in the upper 60s.

Monday...Partly sunny with a 40 percent chance of showers and thunderstorms. Highs in the mid 80s.

Monday Night...Partly cloudy with a 20 percent chance of showers and thunderstorms. Lows around 70.

Tuesday...Partly sunny with a 40 percent chance of showers and thunderstorms. Highs in the mid 80s.

Tuesday Night...Partly cloudy. A 20 percent chance of showers and thunderstorms. Lows in the upper 60s. Highs in the mid 80s.

Wednesday...Partly cloudy. A 20 percent chance of showers and thunderstorms. Lows in the upper 60s. Highs in the mid 80s.

Wednesday Night...Mostly clear. Lows in the upper 60s.

Thursday...Partly sunny with a 30 percent chance of showers and thunderstorms. Highs in the mid 80s.

Prime Feeding Times for Gilbertsville, KY 42044

| Date | Sun Data | Moon Data | Moon Phase | Major Activity Times | Minor Activity Times | Prediction |
|---------------------|---------------------------------|--|-----------------------|---------------------------------------|------------------------------------|---------------|
| Friday 6/6/2014 | Rises: 5:33 am Sets: 8:09 pm | Rises: 1:38 pm Sets: 1:15 am Over: 7:46 pm Under: 7:24 am | 58% Waxing Gibbous | 7:24 am-9:24 am 7:46 pm-9:46 pm | 1:15 am-2:15 am 1:38 pm-2:38 pm | ★ Average |
| Saturday 6/7/2014 | Rises: 5:33 am Sets: 8:10 pm | Rises: 2:35 pm Sets: 1:46 am Over: 8:31 pm Under: 8:08 am | 68% Waxing Gibbous | 8:08 am-10:08 am 8:31 pm-10:31 pm | 1:46 am-2:46 am 2:35 pm-3:35 pm | ★ Average |
| Sunday 6/8/2014 | Rises: 5:33 am Sets: 8:10 pm | Rises: 3:34 pm Sets: 2:18 am Over: 9:18 pm Under: 8:54 am | 77% Waxing Gibbous | 8:54 am-10:54 am 9:18 pm-11:18 pm | 2:18 am-3:18 am 3:34 pm-4:34 pm | ★ Average |
| Monday 6/9/2014 | Rises: 5:33 am Sets: 8:11 pm | Rises: 4:35 pm Sets: 2:54 am Over: 10:08 pm Under: 9:43 am | 85% Waxing Gibbous | 9:43 am-11:43 am 10:08 pm-12:08 am | 2:54 am-3:54 am 4:35 pm-5:35 pm | ★ Average |
| Tuesday 6/10/2014 | Rises: 5:33 am Sets: 8:11 pm | Rises: 5:39 pm Sets: 3:34 am Over: 11:02 pm Under: 10:35 am | 92% Waxing Gibbous | 10:35 am-12:35 pm 11:02 pm-1:02 am | 3:34 am-4:34 am 5:39 pm-6:39 pm | ★★ Good |
| Wednesday 6/11/2014 | Rises: 5:33 am Sets: 8:12 pm | Rises: 6:43 pm Sets: 4:19 am Over: --:-- Under: 11:30 am | 97% Waxing Gibbous | --:--:--:-- 11:30 am-1:30 pm | 4:19 am-5:19 am 6:43 pm-7:43 pm | ★★★ Better |
| Thursday 6/12/2014 | Rises: 5:33 am Sets: 8:12 pm | Rises: 7:46 pm Sets: 5:11 am Over: --:-- Under: 12:29 pm | 100% FULL MOON | --:--:--:-- 12:29 pm-2:29 pm | 5:11 am-6:11 am 7:46 pm-8:46 pm | ★★★★ Best |

Fishing Report



Bass Fishing ... (Photo) Tom Willems and Bill Martin from Missouri had the trip of a lifetime this week fishing ledges from the Kick'n Bass Ranger boat. Shown here with four of their fish that topped five pounds each, the boys put together a limit of bass that topped 30 pounds on Shakey Heads. (Note: Kick'n Bass Guide Service practices **CPR (Catch-Photo-Release)** on all bass).

Offshore fishing on Kentucky Lake is especially strong right now. This week we're seeing some fairly large schools of bass on our Lowrance HDS Systems working the ledges in 15-20 feet of water chasing baitfish. When we see this scenario we use a 5 " swim bait and reel it slowly thru the school or crank a deep diving SPRO crankbait to pick off the aggressive biters and then clean up using a ZMan and PJ's Shakey Head combo. The secondary ledges are not as full of fish as they were and the main river ledges are seeing more bass on a daily basis. There are some fish on the points at the mouth of the bays but those areas that had lots of fish just don't have as many now. During times of slack current most of our fish have been caught dragging a ¼ oz PJ's Bass extractor jig head with a ZMan Finesse worm. With fish on or near the bottom this has been a super productive method for us. When things slow down or get especially tough we switch to a 3/16 oz head and 4" finesse worm. The big females are feeding aggressively during the prime feeding times so pay special attention to those times, they're located here in the report, so plan to be at your best location then.



Catch Fish & Have Fun on the Kick'n Bass Pontoon

(Photo) Al & Gus Hirth from Illinois had a blast this week catching a mixed bag of crappie, bass, stripes and catfish off the Kick'n Bass Pontoon and some of the fish were huge!

Book Your Trip NOW !!!

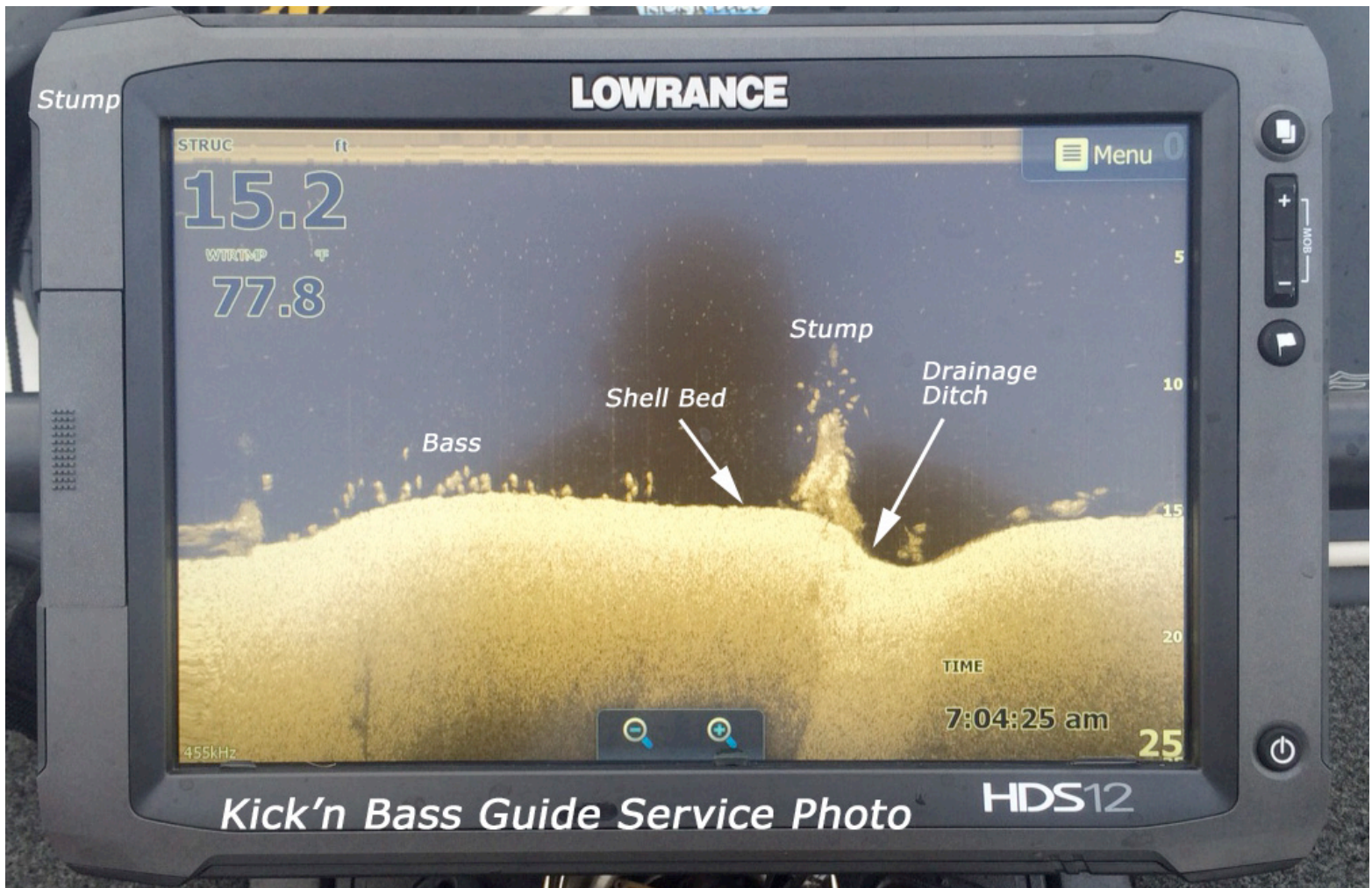
Crappie ... Capt. Rich has been trolling SPRO cranks deep 16-19 feet and catching very large post-spawn females. The bite has been very consistent for big crappie and the numbers have been good each day. **Book your trip NOW!!!**

White bass ... from what we've seen so far it looks like white bass fishing is going to be pretty good this year. We're catching some big fish on the ledges and the mouth of the bays on a Steel

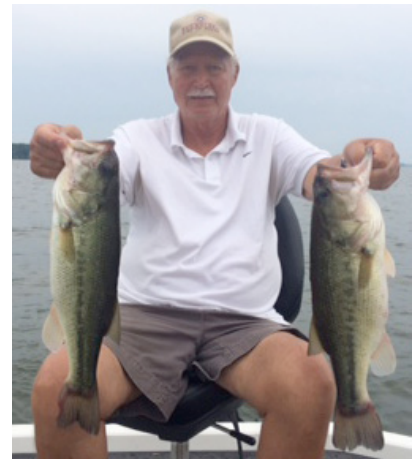
Shad blade bait when we're fishing for bass. So my thoughts are how good could it be if we were concentrating on them. Their time will come

Bluegill & Redear ... The feeding frenzies are waning big time but some good fish are still being caught using Shelton's Bluegill bug with and without a cricket. Fishing a cricket under an ESB slip bobber is a good back up plan.

Sonar Tip Of The Week Featuring Lowrance High Definition Sonar Systems



This location was discovered during one of our guide trips this week. The image shows bass relating to both a shell bed and a stump on the edge of a drainage ditch. We'd been following schools of bass for several days as they used the drainage ditch to make their way towards the river channel. As you can see there was a number of fish in the school which provided us with some real good fishing. Tom Willems (Photo) fishing from the back of the Kick'n Bass Ranger boat, caught these two good ones from the school on a Shakey Head.



Be the best angler you can be by learning to use your electronics to their full potential. For your personalized "On the water Sonar Class" contact Lowrance Pro Staffer Randy Kuhens at rk@kicknbass.net.

Here's what some of our clients had to say about their "On the Water" class experience ...

Randy, what a great class! It exceeded our expectations. Both Paula and I really enjoyed how you kept it interesting didn't get in a hurry and explained everything so we could understand it. We're so fired up we are ordering an HDS 10 in the morning to go up front and selling the HDS 5. We're glad we met you and we'll be sure and tell everyone about your class. Good Luck!

Paul & Paula Trabethan – Naperville, Illinois

Remember ... The first step in our "On the Water Sonar Class" is to perform an inspection of your system to make sure the installation has been done to factory specs and all components are installed in the proper location. If adjustments are needed we can have them made prior to beginning your class. Doing so assures you that your system will perform at a high level and you'll get the most out of your time on the water. You've made a Significant Investment in Electronics. Be the best angler you can be by learning to use your electronics to their full potential. For your personalized "On the water Sonar Class" contact Lowrance Pro Staffer Randy Kuhens at rk@kicknbass.net

The "On the Water Sonar Class" is a one on one, hands on, in your boat using your electronics instruction that will take your understanding and know-how to another level. We get it and you will too!

Kick'n Bass' 7 Essential Steps to Simplify Using Your HDS System.

Kick'n Bass will perform the following ...

- 1. Complete a detailed inspection on your system to certify the installation has been done to factory specs. (If adjustments are required technicians are available to fine tune your system prior to beginning your class. Doing so assures you that your system will perform at an optimum level and you'll get the most out of your time on the water).**
- 2. Check all network settings for compatibility and make adjustments if needed.**
- 3. Program the individual screens and install the overlay data that is best suits the type fishing you do. Example: Depth, Water Temp, Time, etc. Eliminate unwanted, non-practical on screen clutter that hampers using your unit to its maximum potential.**
- 4. Arrange the screens so that going from page to page is orderly and non-confusing. You'll become familiar with the screens and commands and what they'll do for you.**
- 5. Dial in Sonar and Structure Scan Graphics and choose appropriate Palette for the lakes you fish.**
- 6. Demonstrate the art of waypoint management. No more cluttered maps with useless or unproductive waypoints. You'll learn to identify which locations are waypoint worthy and how to go back to those locations without ever assigning a waypoint. You'll assign a waypoint once you are satisfied the location is worth saving.**
- 7. Demo the unit so you'll be able to take advantage of its fish finding capabilities. You'll learn to identify shell beds, submerged stumps, brush piles, ledges, game fish species and more.**

As a bonus Kick'n Bass will help you learn to read an electronic topo map and find "places of interest" that could be potential fishing hot spots.

Triton Smart Bracket Console Mounting System Now Available.

**More Makes & Models to Choose From
Place Your Order Now!**



**Be sure and Check out our webpage for more photos and
other Sonar Accessories. <http://kicknbass.net/sonar-accessories.php>**