



**To Book a trip call 270-703-6133 or visit our website
www.kicknbass.net**

May 16, 2014

Lake Conditions

With the amount of heavy rain we've had late this week both lakes are fluctuating slightly above summer pool. For more information including a generation schedule visit the TVA website at http://www.tva.gov/lakes/kyh_r.htm

Water Clarity and Temperature ...

Both lakes range from cloudy in some of the creeks with the main lake and larger bays clearing. Surface water temps on both lakes are in the 68-70 degree range and trending higher in the afternoons on sunny days.

Weather Outlook

Friday...Mostly sunny. Highs in the lower 60s. West winds 10 to 15 mph.

Friday Night...Partly cloudy with a 20 percent chance of showers. Lows in the mid 40s. West winds 5 mph in the evening shifting to the north after midnight.

Saturday...Partly sunny with a 20 percent chance of showers. Highs in the mid 60s. Calm winds in the morning becoming north 5 mph in the afternoon.

Saturday Night...Partly cloudy. Lows in the upper 40s.

Sunday...Mostly sunny. Highs in the lower 70s.

Sunday Night...Mostly clear. Lows in the lower 50s.

Monday...Partly cloudy. Highs in the mid 70s. Lows in the upper 50s.

Monday Night...Partly cloudy. Highs in the mid 70s. Lows in the upper 50s.

Tuesday...Partly sunny. Highs in the lower 80s.

Tuesday Night...Mostly clear. Lows in the mid 60s. Highs in the mid 80s.

Wednesday...Mostly clear. Lows in the mid 60s. Highs in the mid 80s.

Prime Feeding Times for Gilbertsville, KY 42044

Date	Sun Data	Moon Data	Moon Phase	Major Activity Times	Minor Activity Times	Prediction
Friday 5/16/2014	Rises: 5:44 am Sets: 7:54 pm	Rises: 10:01 pm Sets: 7:25 am Over: 2:15 am Under: 2:44 pm	95% Waning Gibbous	2:15 am-4:15 am 2:44 pm-4:44 pm	7:25 am-8:25 am 10:01 pm-11:01 pm	☆☆☆ Better
Saturday 5/17/2014	Rises: 5:43 am Sets: 7:55 pm	Rises: 10:56 pm Sets: 8:25 am Over: 3:14 am Under: 3:43 pm	89% Waning Gibbous	3:14 am-5:14 am 3:43 pm-5:43 pm	8:25 am-9:25 am 10:56 pm-11:56 pm	☆☆ Average
Sunday 5/18/2014	Rises: 5:42 am Sets: 7:56 pm	Rises: 11:46 pm Sets: 9:30 am Over: 4:12 am Under: 4:41 pm	81% Waning Gibbous	4:12 am-6:12 am 4:41 pm-6:41 pm	9:30 am-10:30 am 11:46 pm-12:46 am	☆☆ Average
Monday 5/19/2014	Rises: 5:42 am Sets: 7:57 pm	Rises: --:-- Sets: 10:36 am Over: 5:10 am Under: 5:38 pm	71% Waning Gibbous	5:10 am-7:10 am 5:38 pm-7:38 pm	--:-----:-- 10:36 am-11:36 am	☆☆ Average
Tuesday 5/20/2014	Rises: 5:41 am Sets: 7:58 pm	Rises: 12:31 am Sets: 11:43 am Over: 6:05 am Under: 6:32 pm	60% Waning Gibbous	6:05 am-8:05 am 6:32 pm-8:32 pm	12:31 am-1:31 am 11:43 am-12:43 pm	☆☆ Average
Wednesday 5/21/2014	Rises: 5:40 am Sets: 7:58 pm	Rises: 1:12 am Sets: 12:50 pm Over: 6:58 am Under: 7:24 pm	50% Last Quarter	6:58 am-8:58 am 7:24 pm-9:24 pm	1:12 am-2:12 am 12:50 pm-1:50 pm	☆☆ Average
Thursday 5/22/2014	Rises: 5:40 am Sets: 7:59 pm	Rises: 1:49 am Sets: 1:55 pm Over: 7:50 am Under: 8:15 pm	37% Waning Crescent	7:50 am-9:50 am 8:15 pm-10:15 pm	1:49 am-2:49 am 1:55 pm-2:55 pm	☆☆ Average



Experience Great Fishing Adventures On the Kick'n Bass Pontoon

**Book Your "Crank'n For Crappie
Trips" on the Kick'n Bass Pontoon
... Don't Wait Book Now!!!**

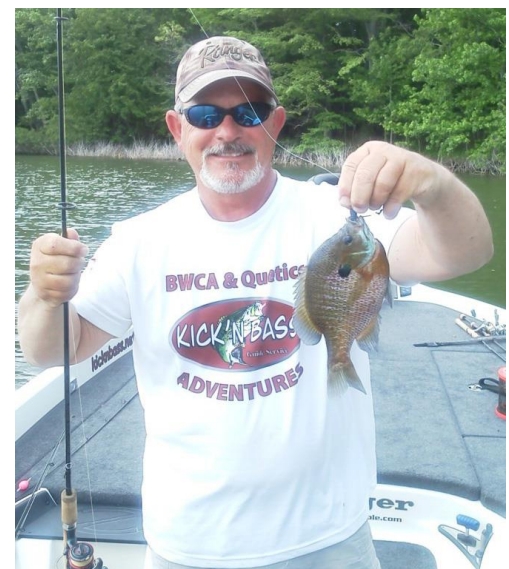
Check out our TV Show "
Crank'n For Crappie" <http://feel-n-reel.com/past-shows.htm>

(Photo) Despite some very cold, rainy conditions late this week my good friend Roger Burkman from Louisville caught some real nice post-spawn crappie fishing from the Kick'n Bass pontoon.

Fishing Report

Bluegill & Redear ... We had a couple of fantastic panfish trips this week and using Shelton's Bluegill bug with and without a cricket we did some serious damage on the bluegill and redear populations. Fishing a cricket under a ESB slip bobber was a strong second. The redear seem to be bedding slightly deeper than last year so if you don't find them in very shallow water keep this in mind. Calm areas with sandy gravel banks are prime areas to find these bedding fish.

(Photo) Kick'n Bass with a "Bull" Bluegill





Everlasting Slip Bobbers ... not just your ordinary slip bobber!

Choosing the right slip bobber is just as important as having the right rod & reel and line. ESB bobbers have several advantages that will help you catch more fish and keep rigging time to a minimum. As an example every ESB bobber comes with a highly polished glass bead that is molded into the top of the tube. No more loose beads to deal with! The high polished bead won't cut fishing line and reduced line friction allows the line to flow smoothly increasing casting distance and accuracy, plus the bait gets to the fish much faster than an ordinary slip

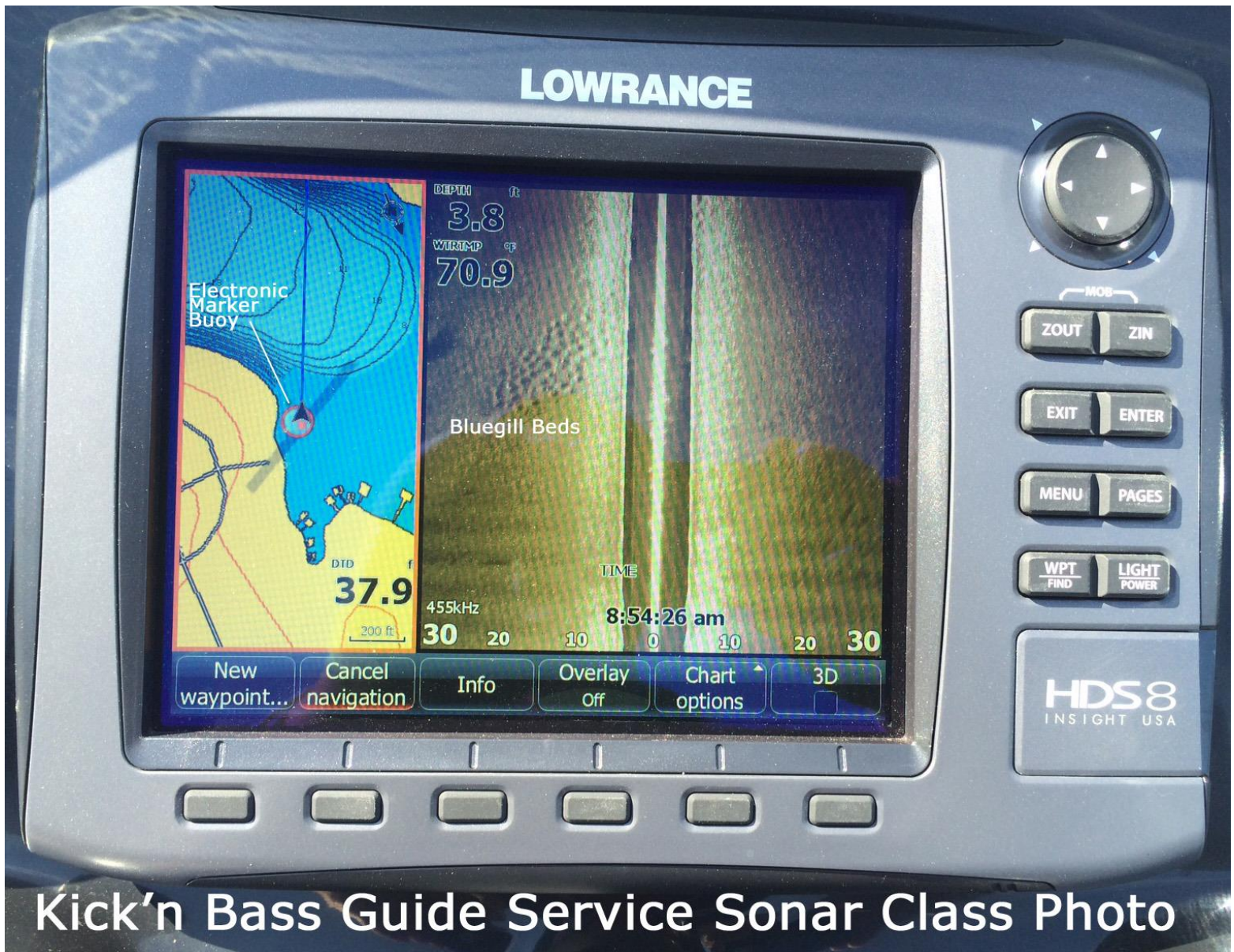
float. The bottom end of the tube is protected by a brass guard so the tube itself won't become worn and fray your line. The tube is made of a clear synthetic material that won't swell, split or rot plus you can see your line coming thru the tube when you're rigging up. ESB bobbers come in assorted sizes for bluegill to big catfish and in an array colors, plus each bobber comes with a slip knot. What could be better! No more frayed lines and loose beads rolling around on the floor, they cast like a dream and everything you need to rig up comes in one neat little package. ESB Bobbers are the only slip bobbers Kick'n Bass uses. (ESB bobbers are available at the tackle shops around the Kentucky Lake area or you can order them online at <http://www.hloutdoors.com>)



Bass Fishing ... We've got post spawn, spawn and pre-spawn action going on and the can only mean one thing and that a lot of fish are in the bushes, on the points at the mouth of the bays and on the ledges. With the full moon this week expect the bass that haven't spawned to do so. Bass fishermen have flocked to the bushes to catch some real nice fish. For the most part My clients and I fishing from the Kick'n Bass Ranger boat have forgone the bushes and worked the points at the mouth of the bays and ledges to catch some real nice fish like the ones my good friend and Former U of L Coach basketball coach Denny Crum (*photo*) caught on a Shakey Head. The best for us this week has been a 7 inch ZMan finsee worm a 3/16 oz PJ's Bass Extractor jig Shakey Head style. Those of you that are only flipping and pitching are passing up some great opportunities if you are just concentrating on the bushes.

Crappie ... Capt. Rich has been trolling SPRO cranks deep 16-19 feet and catching some big post-spawn females. The bite has been very consistent for big crappie and the numbers have been good each day. Book your trip NOW!!!

SONAR TIP OF THE WEEK ...



Kick'n Bass Guide Service Sonar Class Photo

This week Redear and Bluegill are making their way to the shallows in preparation of the spawn. A good way to find these bedding fish is by using your Lowrance HDS Sonar Unit in side scan mode. The right side of the screen clearly shows a bedding location. We marked the spot with an electronic marker buoy and returned using the "Go To Track Back" function. My clients and I found this out of the way bed to be most productive and we caught more than we deserved. Without knowing how to unlock the potential of our system no way would we have found a high percentage area like this.

Be the best angler you can be by learning to use your electronics to their full potential. For your personalized "On the water Sonar Class" contact Lowrance Pro Staffer Randy Kuhens at rk@kicknbass.net.

Here's what one of our clients had to say about his "On the Water" class
Randy, no way would I have ever thought I would get so much out of a sonar class. I've been to sonar seminars, watched youtube videos and read the owners manual from cover to cover. I learned more during my time on the water with you than I ever expected. The sonar class was well worth my time and investment. Anyone wanting to master their electronics should do your class.

Paul Douglas Jones – Marion, IN

Remember ... *The first step in our "On the Water Sonar Class" is to perform an inspection of your system to make sure the installation has been done to factory specs and all components are installed in the proper location. If adjustments are needed we can have them made prior to beginning your class. Doing so assures you that your system will perform at a high level and you'll get the most out of your time on the water.*

You've made a Significant Investment in Electronics. Be the best angler you can be by learning to use your electronics to their full potential. For your personalized "On the water Sonar Class" contact Lowrance Pro Staffer Randy Kuhens at rk@kicknbass.net

The "On the Water Sonar Class" is a one on one, hands on, in your boat using your electronics instruction that will take your understanding and know-how to another level. We get it and you will too!

Kick'n Bass' 7 Essential Steps to Simplify Using Your HDS System.

Kick'n Bass will perform the following ...

- 1. Complete a detailed inspection on your system to certify the installation has been done to factory specs. (If adjustments are required technicians are available to fine tune your system prior to beginning your class. Doing so assures you that your system will perform at an optimum level and you'll get the most out of your time on the water).**
- 2. Check all network settings for compatibility and make adjustments if needed.**
- 3. Program the individual screens and install the overlay data that is best suits the type fishing you do. Example: Depth, Water Temp, Time, etc. Eliminate unwanted, non-practical on screen clutter that hampers using your unit to its maximum potential.**
- 4. Arrange the screens so that going from page to page is orderly and non-confusing. You'll become familiar with the screens and commands and what they'll do for you.**
- 5. Dial in Sonar and Structure Scan Graphics and choose appropriate Palette for the lakes you fish.**
- 6. Demonstrate the art of waypoint management. No more cluttered maps with useless or unproductive waypoints. You'll learn to identify which locations are waypoint worthy and how to go back to those locations without ever assigning a waypoint. You'll assign a waypoint once you are satisfied the location is worth saving.**
- 7. Demo the unit so you'll be able to take advantage of its fish finding capabilities. You'll learn to identify shell beds, submerged stumps, brush piles, ledges, game fish species and more.**

As a bonus Kick'n Bass will help you learn to read an electronic topo map and find "places of interest" that could be potential fishing hot spots.

**Phoenix Smart Bracket Console Mounting
System Now Available.
Taking Orders Now!**



Be sure and Check out our webpage for more photos and other Sonar Accessories. <http://kicknbass.net/sonar-accessories.php>