



**To Book a trip call 270-703-6133 or visit our website  
[www.kicknbass.net](http://www.kicknbass.net)**

**April 4, 2014**

## **Lake Conditions**

### **Water Clarity and Temperature ...**

Both lakes range from dingy in some of the creeks with the main lake and larger bays clearing. Surface water temps on both lakes are around 58 degrees and warming to the low 60's in the afternoons on sunny days. With the amount of rainfall we had Wednesday and Thursday expect the lakes to rise some and the water to have some color to it, especially in the back of the bays where the banks are exposed from the drawdown.

## **Weather Outlook**

**Friday...**Mostly sunny. A 40 percent chance of thunderstorms in the morning. Some thunderstorms May be severe. Highs in the lower 60s. Temperature steady or slowly falling in the afternoon. West winds 10 to 20 mph.

**Friday Night...**Mostly clear. Lows in the upper 30s. West winds 10 to 15 mph.

**Saturday...**Mostly sunny. Highs in the upper 50s. North winds 5 to 10 mph.

**Saturday Night...**Partly cloudy. Lows around 40.

**Sunday...**Partly sunny. Highs in the lower 60s.

**Sunday Night...**Showers likely and isolated thunderstorms. Lows in the upper 40s. Chance of precipitation 60 percent.

**Monday...**Mostly cloudy with a 40 percent chance of showers. Highs around 60.

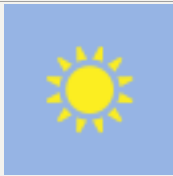
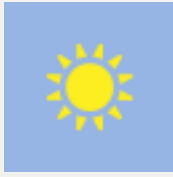
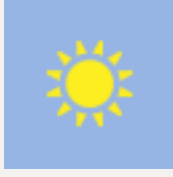
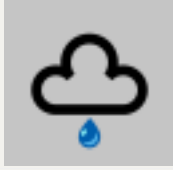
**Monday Night...**Mostly cloudy. Lows in the lower 40s.

**Tuesday...**Partly sunny with a 20 percent chance of showers. Highs around 60.

**Tuesday Night...**Partly cloudy. Lows in the upper 30s.

**Wednesday...**Mostly sunny. Highs around 60.

**Best Feeding Times for Kentucky & Barkley Lakes**

Date	Major	Minor	Sun	Moon	Moon Phase	Weather
<u>Fri, 04 Apr</u>	03:42 am - 05:42 am 04:08 pm - 06:08 pm	--- 08:55 am - 10:55 am	R:06:33 am S:07:17 pm	R:09:55 am S:-		
<u>Sat, 05 Apr</u>	04:33 am - 06:33 am <b>04:57 pm - 06:57 pm</b>	--- 09:44 am - 11:44 am	R:06:31 am S:07:18 pm	R:10:44 am S:00:22 am		
<u>Sun, 06 Apr</u>	05:22 am - 07:22 am <b>05:44 pm - 07:44 pm</b>	00:10 am - 02:10 am 10:35 am - 12:35 pm	R:06:30 am S:07:19 pm	R:11:35 am S:01:10 am		
<u>Mon, 07 Apr</u>	<b>06:10 am - 08:10 am</b> 06:29 pm - 08:29 pm	00:53 am - 02:53 am 11:27 am - 01:27 pm	R:06:28 am S:07:20 pm	R:12:27 pm S:01:53 am		

## ***Family Fishing Adventures From the Kick'n Bass Pontoon***



*(Photo) Alan and Aaron Petefish with some nice crappie caught this week fishing with Kick'n Bass*

**Book Your  
"Crank'in For  
Crappie Trips"  
NOW!**

**Don't Wait  
Book Now!**

Check out our TV Show "Crank'n For Crappie" <http://feel-n-reel.com/past-shows.htm>



**(Photo) Dan Cunagin and Rusty Burnett from Louisville, KY with a few of the slab crappie they caught this week fishing from the Kick'n Bass Ranger boat.**

## Fishing Report

The good weather we've been hoping for finally arrived and with it came some of the best fishing of the early season. **Crappie Fishing** is the big deal on the lakes this week as the Black Crappie began their pre-spawn ritual transitioning to the spawning flats. With the full moon on the 15<sup>th</sup> expect a major spawn to take place. **Bass Fishing** is red hot for smaller male bass, which is indicative of pre-spawn action. The big females are staging on the drops along the secondary channels and creek arms in preparation of the full moon. Fishing for both species is good and expect it to get red hot as the full moon approaches.

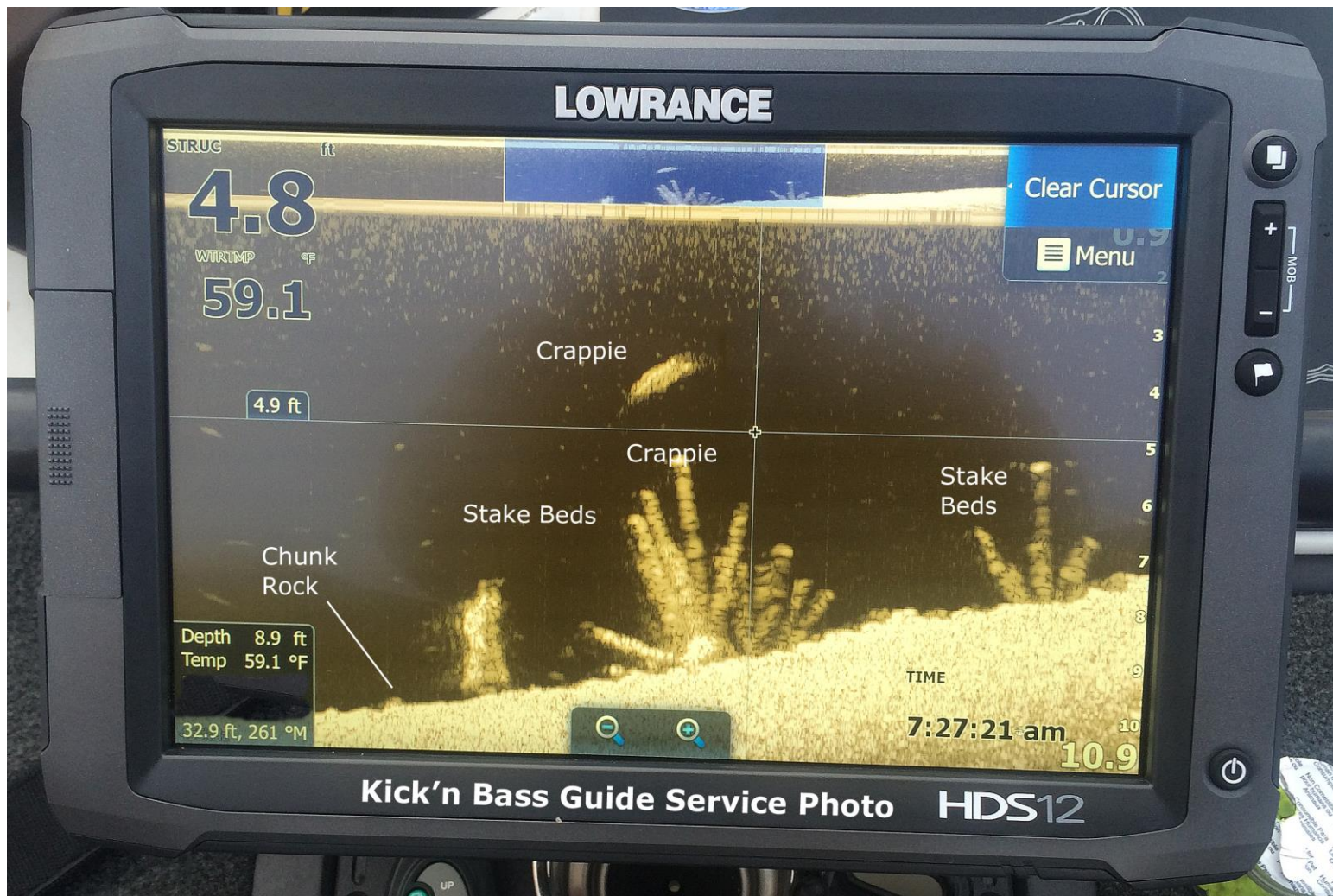
**Crappie ...** The Black Crappie that began moving to the banks late last week made a major move by mid-week and we caught them in big numbers. Our best fish this week was a 16" 2 ¾ pound Black caught on a KY Green curly tail. The most favorable bite was along chunk rock banks mid-way in the bays. Our best method is casting 3/32 oz Ken's light wire lead head with a 2.5 – 3 inch KY Green curly tail and then switching off and casting a small feather and hair jig on a weighted bobber and working it back slowly to pick off another fish or two. Also we're catching a few using a slip bobber and minnow fishing over and around shallow submerged cover. As you can see a number of methods are being used to catch fish and the most productive depths are 4-6 feet and chunk rock banks were the prime target areas. White crappie are being taken by spider rigging jig and jig and minnow combinations over submerged cover. The depth varies but 8-10 is a pretty safe bet.

**Bass Fishing ...** If you're into numbers of fish then you should be a happy camper. Tons of 1 -2 pound bass are shallow and cruising the banks and the points at the mouth of the bays. On sunny days

a Steel Shad blade bait cast on a medium retrieve or SPRO little John crank bait is the way to go. On windy overcast or not so favorable days weather-wise fishing a 7 inch ZMan Shakey Head on a 3/16 oz PJ's bass extractor jig has worked wonders for my clients and I. Wind blown banks on the main lake are holding the better fish. While we're catching some fish up to 3.5 pounds, so far this week the bigger fish have alluded us. Smallmouth Bass are showing up on the main lake gravel flats as they are in pre-spawn mode.

**Catfishing ...** While we're not specifically fishing for cats we've caught a fair number in shallow water while fishing for bass & Crappie. One can only wonder how good cat fishing could be if that was your primary purpose.

## ***SONAR TIP OF THE WEEK ...***



***SCAN – FIND – CAST – CATCH ... Why not scan the banks, find the fish and then cast and catch them! Makes sense doesn't it! That's exactly what my clients and I did this week pre-spawn crappie fishing. The screen shows submerged stake beds topping out at about 5 feet with the crappie suspended slightly above the cover. Once we pinpointed these high percentage areas we cast our curly tails and worked the lure close to the cover. When the lure got close we'd get bit. This scenario repeated itself time and time again and by the end of the day we'd have a real nice mess of fish. Without the help of our Lowrance High Definition system no way would we have found high percentage areas like this much less known at what depth the fish were.***

***Remember ...*** The first step in our "On the Water Sonar Class" is to perform an inspection of your system to make sure the installation has been done to factory specs and all components

are installed in the proper location. If adjustments are needed we can have them made prior to beginning your class. Doing so assures you that your system will perform at a high level and you'll get the most out of your time on the water.

You've made a Significant Investment in Electronics. Be the best angler you can be by learning to use your electronics to their full potential. For your personalized "On the water Sonar Class" contact Lowrance Pro Staffer Randy Kuhens at [rk@kicknbass.net](mailto:rk@kicknbass.net)

**Here's what one of our clients had to say about his "On the Water" class today ...**

Randy, what an exceptional day! Class was better than advertised. Matt and the guys at Bass N' Gas did an exceptional job on the installation of my Lowrance system. Anytime you get the opportunity to learn on a one on one basis with a pro on the water, whether it be fishing or on the electronics system I consider it a life lesson. Your sonar class was a 1st class experience and I would recommend to anyone that purchases or has already purchased Lowrance units to take your class. When you can learn to locate structure but also distinguish the difference in the species of fish, it is a plus. I left today with the confidence knowing I will catch more fish. Thanks for everything.

Barry Baker - Springville, TN

**The "On the Water Sonar Class" is a one on one, hands on, in your boat using your electronics instruction that will take your understanding and know-how to another level. We get it and you will too!**

## **Kick'n Bass' 7 Essential Steps to Simplify Using Your HDS System.**

**Kick'n Bass will perform the following ...**

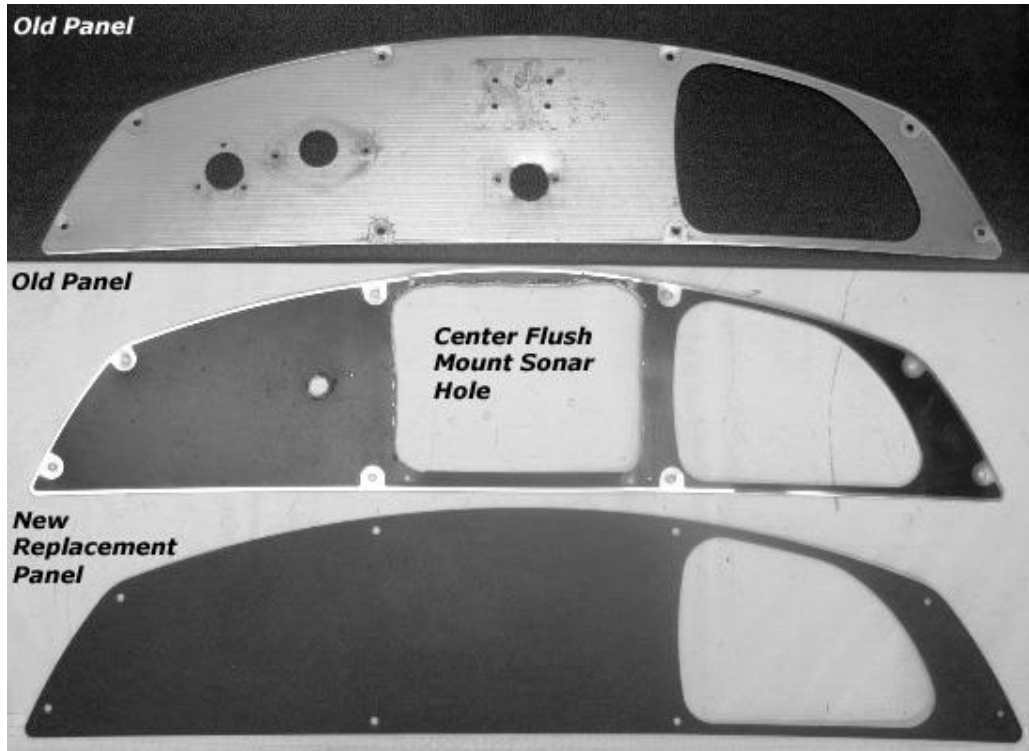
- 1. Complete a detailed inspection on your system to certify the installation has been done to factory specs. (If adjustments are required technicians are available to fine tune your system prior to beginning your class. Doing so assures you that your system will perform at an optimum level and you'll get the most out of your time on the water).**
- 2. Check all network settings for compatibility and make adjustments if needed.**
- 3. Program the individual screens and install the overlay data that is best suits the type fishing you do. Example: Depth, Water Temp, Time, etc. Eliminate unwanted, non-practical on screen clutter that hampers using your unit to its maximum potential.**
- 4. Arrange the screens so that going from page to page is orderly and non-confusing. You'll become familiar with the screens and commands and what they'll do for you.**
- 5. Dial in Sonar and Structure Scan Graphics and choose appropriate Palette for the lakes you fish.**
- 6. Demonstrate the art of waypoint management. No more cluttered maps with useless or unproductive waypoints. You'll learn to identify which locations are waypoint worthy and how to go back to those locations without ever assigning a**

waypoint. You'll assign a waypoint once you are satisfied the location is worth saving.

7. Demo the unit so you'll be able to take advantage of its fish finding capabilities. You'll learn to identify shell beds, submerged stumps, brush piles, ledges, game fish species and more.

As a bonus Kick'n Bass will help you learn to read an electronic topo map and find "places of interest" that could be potential fishing hot spots.

### **Ranger Z Series Replacement Panels available**



**Be sure and Check out our webpage for more photos and other Sonar Accessories.**

<http://kicknbass.net/sonar-accessories.php>