



FISH KENTUCKY & BARKLEY LAKES  
WITH GUIDE RANDY KUHENS

To Book a trip call 270-703-6133 or visit our website

[www.kicknbass.net](http://www.kicknbass.net)

Friday November 1, 2013

Fall Crappie Fishing is **HOT** on the *Kick'n Bass Pontoon.*



If family fishing is your thing or just getting a group together to fellowship then the Kick'n Bass Pontoon is for you! Have a Kick'n Good Time !

***Get Your Family or Friends Together.***

***Corporate or Company Trip Packages Available Too!***

***Book Your Trip Now!***

Contact [rk@kicknbass.net](mailto:rk@kicknbass.net) or Call 270-703-6133

*Michelle Overby from Gilbertsville with her monster 16 inch crappie caught fishing from the Kick'n Bass Pontoon.*



**Watch Episode #6 "Kick'n Carp" on Feel-n-Reel TV.**



**You will be amazed at the size and fight of these fish and want to be right there in the boat with us ...**

**Click on this link ... <http://youtu.be/7AICUwftw4g>**

## **Lake Conditions**

**Lake Levels ...** Both lakes are at 354.5. Summer pool level is 359 which makes the current lake level 4.5 below summer pool. Use caution in shallow areas and pay special attention to the channel markers. They are there for a reason and use them wisely. For additional info, including generation schedule for Kentucky Lake, visit the TVA website: [http://www.tva.gov/lakes/kyh\\_r.htm](http://www.tva.gov/lakes/kyh_r.htm)

**Water Clarity and Temperature ...** The water clarity in both lakes is ideal for fishing. Some areas are clearer than others with the back of the bays showing some color but overall water quality is looking real good. Surface water temps fluctuate during the day starting around 60 degrees after a cool night and warming several degrees by the afternoon.

## **Weather Outlook**

**Friday...** Mostly sunny. Highs in the mid 60s. Southwest winds 5 to 10 mph.

**Friday Night...** Partly cloudy. Lows in the mid 40s. West winds 5 to 10 mph.

**Saturday...** Mostly sunny. Highs in the upper 50s. Northwest winds 10 to 15 mph.

**Saturday Night...** Partly cloudy. Lows in the mid 30s.

**Sunday...** Mostly sunny. Highs in the upper 50s.

**Sunday Night...** Partly cloudy. Lows in the lower 40s.

**Monday...** Partly sunny. Highs in the lower 60s.

**Monday Night...** Partly cloudy with a 20 percent chance of showers. Lows in the upper 40s.

**Tuesday...** Mostly cloudy with a 30 percent chance of showers. Highs in the lower 60s.

**Tuesday Night...** Mostly cloudy with a chance of showers and a slight chance of thunderstorms. Lows in the lower 50s. Chance of precipitation 40 percent.

**Wednesday...** Mostly cloudy with a chance of showers and a slight chance of thunderstorms. Highs in the mid 60s. Chance of precipitation 50 percent.

## Prime Feeding Times for Kentucky & Barkley Lakes

| Date                 | Temps            | Sun Data                      | Moon Data  | Moon Phase                | Major Times                              | Minor Times                             | Prediction |
|----------------------|------------------|-------------------------------|--|---------------------------|--|---|------------|
| Friday<br>11/1/13    | H: 66°<br>L: 49° | Rise: 7:17 AM<br>Set: 5:55 PM | Rise: 5:11 AM<br>Set: 4:45 PM<br>Overhead: 11:02 AM<br>Underfoot: 11:28 PM | 4%<br>Waning<br>Crescent  | 11:02 AM - 1:02 PM<br>11:28 PM - 1:28 AM | 5:11 AM - 6:11 AM<br>4:45 PM - 5:45 PM  | Better     |
| Saturday<br>11/2/13  | H: 56°<br>L: 44° | Rise: 7:18 AM<br>Set: 5:54 PM | Rise: 6:15 AM<br>Set: 5:25 PM<br>Overhead: 11:54 AM<br>Underfoot: --:--    | 1%<br>Waning<br>Crescent  | --:-- - --:--<br>11:54 AM - 1:54 PM      | 6:15 AM - 7:15 AM<br>5:25 PM - 6:25 PM  | Best       |
| Sunday<br>11/3/13    | H: 57°<br>L: 36° | Rise: 6:18 AM<br>Set: 4:53 PM | Rise: 6:22 AM<br>Set: 5:09 PM<br>Overhead: 11:48 AM<br>Underfoot: --:--    | 0%<br>NEW<br>MOON         | --:-- - --:--<br>11:48 AM - 1:48 PM      | 6:22 AM - 7:22 AM<br>5:09 PM - 6:09 PM  | Best       |
| Monday<br>11/4/13    | H: 60°<br>L: 42° | Rise: 6:19 AM<br>Set: 4:52 PM | Rise: 7:29 AM<br>Set: 5:59 PM<br>Overhead: 12:46 PM<br>Underfoot: 12:17 AM | 2%<br>Waxing<br>Crescent  | 12:17 AM - 2:17 AM<br>12:46 PM - 2:46 PM | 7:29 AM - 8:29 AM<br>5:59 PM - 6:59 PM  | Better     |
| Tuesday<br>11/5/13   | H: 61°<br>L: 49° | Rise: 6:21 AM<br>Set: 4:51 PM | Rise: 8:34 AM<br>Set: 6:55 PM<br>Overhead: 1:46 PM<br>Underfoot: 1:16 AM   | 7%<br>Waxing<br>Crescent  | 1:16 AM - 3:16 AM<br>1:46 PM - 3:46 PM   | 8:34 AM - 9:34 AM<br>6:55 PM - 7:55 PM  | Good       |
| Wednesday<br>11/6/13 | H: 63°<br>L: 54° | Rise: 6:22 AM<br>Set: 4:50 PM | Rise: 9:35 AM<br>Set: 7:57 PM<br>Overhead: 2:46 PM<br>Underfoot: 2:16 AM   | 14%<br>Waxing<br>Crescent | 2:16 AM - 4:16 AM<br>2:46 PM - 4:46 PM   | 9:35 AM - 10:35 AM<br>7:57 PM - 8:57 PM | Ave        |

### \*\*\* Fishing Report \*\*\*



#### Crappie Fishing ...

With the lakes plagued by harsh winds we didn't get to fish as much as we liked but when we could go it was a boat load of fun. Michelle Overby caught the big one this week, a 16 inch monster white crappie. **White Crappie** are being taken either by trolling crank baits near the river channel or fishing over submerged cover. Find the right brush pile and you can catch a mess. Fishing vertically in submerged cover with Long Poles and jigs caught a fair amount of fish especially those most affected by the passing of the fronts that rolled thru our area. Best depth seemed to be 10-13 feet. Finding submerged cover in deeper water, 17 feet or so, held a lot of fish too. These areas yielded us our best success as these fish were less

affected by the frontal passages. The most productive means was either to back off and cast 3/32 oz KY

Green curly tails, count them down and swim them slowly thru the brush or better at times, was to cast **ESB slip bobbers** with minnows and let them soak around the submerged cover. Alternating between these two methods produced some real good catches. The key of course was using High Definition electronics to find the places that were holding good numbers of fish. **Black Crappie** are far a few between but as the water cools they will start to show up.

**What is a Slip Bobber Anyway?** Many fishermen love to fish for Crappie but are unsure of what a slip bobber is or how to rig it. A slip bobber consists of a straw-like tube that is surrounded by a float. The float is generally a fluorescent color. The line is inserted thru the tube allowing the bobber to slide freely up and down the line. A slip bobber will not work properly if there is not a method to hold it at a certain spot on the line; therefore a bobber stop is needed. The bobber stop consists of a round bead that goes above the float and a stop knot (a line tie) which is positioned above the bead. Both are threaded onto the fishing line. The *bead* keeps the stop knot from going into the float tube and the *stop knot* is used to adjust the depth of the bait or lure. To adjust the depth you want to fish you simply move the stop knot up or down the line. The bead and stop knot are generally purchased separately from the slip bobbers themselves and you'll need both to make the thing work. Putting the finishing touch to this rig is a real simple task; add a crappie hook, minnow and a split shot or your favorite crappie jig and you're in business. Here's a diagram of how to attach the stop knot.



**Everlasting Slip Bobbers ... not just your ordinary slip bobber!**

Choosing the right slip bobber is just as important as having the right rod & reel and line. **ESB** bobbers have several advantages that will help you catch more fish and keep rigging time to a minimum. As an example every **ESB** bobber comes with a highly polished glass bead that is molded into the top of the tube. No more loose beads to deal with! The high polished bead *won't* cut fishing line and reduced line friction allows the line to flow smoothly increasing casting

distance and accuracy, plus the bait gets to the fish much faster than an ordinary slip float. The bottom end of the tube is protected by a brass guard so the tube itself won't become worn and fray your line. The tube is made of a clear synthetic material that won't swell, split or rot plus you can see your line coming thru the tube when you're rigging up. **ESB** bobbers come in assorted sizes for bluegill to big catfish and in an array of colors, plus each bobber comes *with a slip knot*. What could be better! No more frayed lines and loose beads rolling around on the floor, they cast like a dream and everything you need to rig up comes in one neat little package. ESB Bobbers are the only slip bobbers Kick'n Bass uses. (**ESB** bobbers are available at the tackle shops around the Kentucky Lake area or you can order them online at <http://www.hloutdoors.com> )

**Bass Fishing ...** This week the bass fishing has been pretty good. Earlier in the week we had favorable weather and the bass bit good early & late. When the front arrived Wed. with the high winds the fish backed out and we did all right and caught some fish in 8-12 feet in the creeks. The fish were bigger but the numbers were waaaay down. The best locations again this week were the mini-flats in the bays. A **mini-flat** is an area where a creek channel swings back and forth from the bank forming an underwater flat. Specifically we're looking for these areas mid-bay or even further back. Bass are feeding up on shad and the shad are roaming the creek channels and flats adjacent to the creeks. Find an area like this, scan it with your electronics and you'll see what I'm talking about. Duplicate the pattern in other bays. Some decent fish are showing up too! Check out the Sonar Tip of the week for a real good screen shot of some Big Bass feeding on an old road bed.

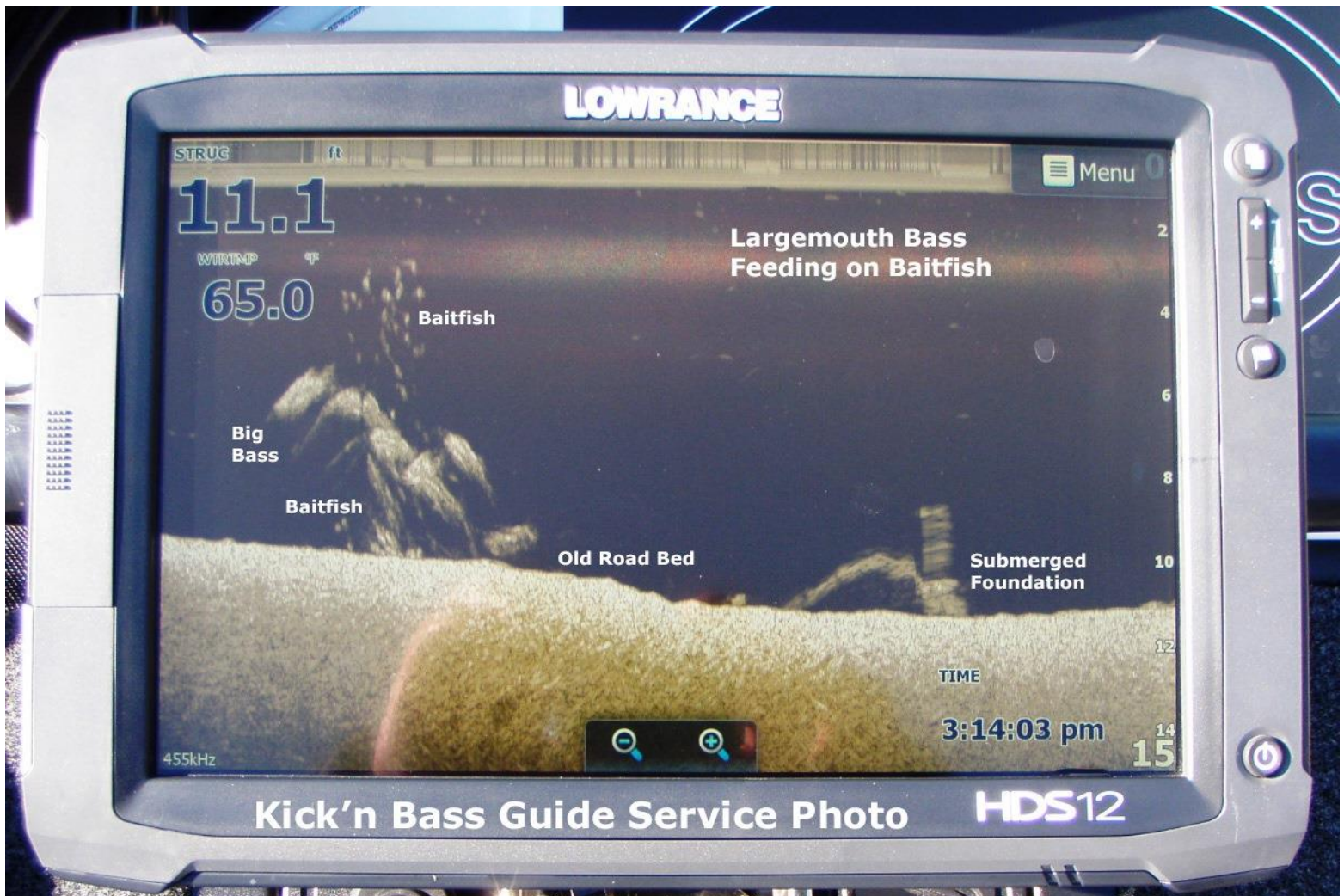
**Offshore Fishing ...** Ditto, Ditto, Ditto from the last three weeks. This pattern is feast or famine. We've caught some fish on the ledges on a Steel Shad blade bait, a Shakey Head and a Drop Shot. Best depth was 10-15 feet on the break. Something we tried again this week was to **Drop Shot** offshore humps in 18-25 feet using a double bait rig. By placing two plastic baits about 24" apart, with one about a foot off the bottom and the other about 3 feet off the bottom allowed us to keep the baits in the

strike zone and catch a number of fish. Once we found the fish on our HDS System we hovered over them and kept the lures in their face. A lot of fish were caught suspended off the bottom about 3 feet deep. Low numbers but bigger fish.

**Stripe Bass Fishing ...** We've caught a fair amount of fish at the mouths of the creeks and bays and trolling on the main lake flats adjoining the Tennessee River Channel. A pretty good indication that fish are in the area is the presence of white gulls. These birds like to take advantage of feeding on wounded shad left behind by the schools of whites. A **Steel Shad blade bait or Ken's Hybrid Spinner** are the best lures for this type of fishing. Also stripes are schooling along main lake ledges. We used our Lowrance HDS System to find these schools and when we did we really caught them sweeping the lures sideways off the bottom.

**Catfish ...** We didn't fish specifically for cats this week but we did catch more than we should have. Every day we caught several on Steel Shad blade baits when we were fishing for bass. I can't imagine what it would be like if we concentrated our efforts on just cat fishing. Over the last two weeks at the cleaning stations, I've seen more folks cleaning catfish than any other species. We've caught them shallow fishing for bass, on crank baits trolling for crappie and when bass fishing the ledges. It must be a cat fish world right now. Kind of wished I had a few more folks that wanted to catfish.

## ***Kick'n Bass Sonar Tip of the Week ...***



## **Get Your System Dialed-in Like Never Before ...**

*WOW! Check out that image of the Big Bass. Is that clear or what! The screen shows a school of Largemouth bass aggressively feeding on baitfish. We marked the location and worked the school but didn't get bit. Later we came back and relocated the school and caught 3 fish with the biggest being 5.25 pounds. Sometimes you just have to back off, be patient but persistent. No doubt, without our Lowrance HDS System no way would we have known that this opportunity even existed.*

*Get your system dialed in like this and by participating in Kick'n Bass "On the Water" sonar class. You'll learn how to use modern technology to find fishing hotspots like this and become a better fisherman. Get it right the first time. For your "On the water Sonar Class" contact Lowrance Pro Staffer Randy Kuhens at [rk@kicknbass.net](mailto:rk@kicknbass.net) or call 270-703-6133*

### **\*\*\* November is Sonar Class Month! \*\*\***

**Last Year we did more classes in November than any month of the year. Now is the time to have your system tuned and programmed. Learn to use your system and practice while weather and fishing is still favorable.**

**Call and book Your Class NOW! 270-703-6133**

### **Here's what some of our clients are saying about Kick'n Bass' "On the Water" Sonar Class ...**

*Randy, friggin awesome class dude! Wait till my fishing buddies see my system. I've got some serious payback to give and I'm going to start this weekend at Patoka Lake.*

*Powers Smith – Tell City, IN.*

*Randy, Your class was recommended to me by a friend of mine who did your class last year. It was well worth the time and my investment. I'll recommend your class to everyone but those guys in my bass club. Ha! LOL!*

*Paul Richardson – Belfontaine, OH.*

**Read the owner's manual or watched a DVD and still baffled? Let's clear up your Sonar confusion. Have your unit(s) programmed and optimized by someone who depends on the HDS technology daily. Together we can make your system more user friendly and you'll get more out of your system.**

**Remember ...** *The first step in our "On the Water Sonar Class" is to perform an inspection of your system to make sure the installation has been done to factory specs and all components are installed in the proper location. If adjustments are needed we can have them made prior to beginning your class. Doing so assures you that your system will perform at a high level and you'll get the most out of your time on the water.*

***The "On the Water Sonar Class" is a one on one, hands on, in your boat using your electronics instruction that will take your understanding and know-how to another level. We get it and you will too!***

## ***Kick'n Bass' 7 Essential Steps to Simplify Using Your HDS System.***

***Kick'n Bass will perform the following ...***

- 1. Complete a detailed inspection on your system to certify the installation has been done to factory specs. (If adjustments are required technicians are available to fine tune your system prior to beginning your class. Doing so assures you that your system will perform at an optimum level and you'll get the most out of your time on the water).***
- 2. Check all network settings for compatibility and make adjustments if needed.***
- 3. Program the individual screens and install the overlay data that is best suits the type fishing you do. Example: Depth, Water Temp, Time, etc. Eliminate unwanted, non-practical on screen clutter that hampers using your unit to its maximum potential.***
- 4. Arrange the screens so that going from page to page is orderly and non-confusing. You'll become familiar with the screens and commands and what they'll do for you.***
- 5. Dial in Sonar and Structure Scan Graphics and choose appropriate Palette for the lakes you fish.***
- 6. Demonstrate the art of waypoint management. No more cluttered maps with useless or unproductive waypoints. You'll learn to identify which locations are waypoint worthy and how to go back to those locations without ever assigning a waypoint. You'll assign a waypoint once you are satisfied the location is worth saving.***
- 7. Demo the unit so you'll be able to take advantage of its fish finding capabilities. You'll learn to identify shell beds, submerged stumps, brush piles, ledges, game fish species and more.***  
***As a bonus Kick'n Bass will help you learn to read an electronic topo map and find "places of interest" that could be potential fishing hot spots.***

**\*\*\* Ranger Boat for Sale \*\*\***



This boat belongs to Jason Sealock, VP of [Wired2Fish.com](http://Wired2Fish.com) and has been well taken care of and maintained. Used but never abused. The boat handles and runs just like new. Jason has made a commitment on a new boat and this one has to go. Here are the particulars.

### **Boat Model**

2008 Ranger Z520 Dual Console in 40th Anniversary colors

### **Ranger Trail Trailer**

Dual Axle. Tires bought Oct 2012

### **Boat Motor**

2009 Evinrude ETEC 250 HO with new Magnum lower unit

Warranty until Feb 2014

Boat Engine has approximately 360 hours on it

Majority of hours at idle speeds (report available)

Compression good on all cylinders (report available)

### **Electronics**

(2) Lowrance **HDS Touch** units. **Touch 9** on console and **Touch 7** on bow

Lowrance HD Structure Scan direct connected to units

NMEA 2000 System

T-H Marine 2-Way Boat Alarm

Lowrance Point-1 Antenna

Lowrance LWX-1 / Sirius Satellite Weather

Electronics wired on own power switch

Kick'n Bass Bow Mount Sonar Bracket at bow

Large Ram Mount at console

### **Optional Equipment**

Minn Kota 8-Foot Talons (2)

Minn Kota Fortrex 24v 80lb trolling Motor w/ G-Force Handle



Minn Kota 3-Bank 330D Digital Battery Charger  
Size 31 AGM Cranking Battery  
Brand new Seat Skins  
Remote Oil fill

Someone will be getting a very good boat at a heck of a price!

Priced for Quick Sale ... **\$32,500**

Serious Inquiries only, please!

Contact **Jason Sealock** direct at [jbsgator@gmail.com](mailto:jbsgator@gmail.com)