



**To Book a trip call 270-703-6133 or visit our website**

**[www.kicknbass.net](http://www.kicknbass.net)**

**July 26<sup>th</sup>, 2013**

## Lake Conditions

**Lake Levels ...** Both lakes at summer pool and projected to stay that way for the next several days. The gates at Barkley are now closed. Kentucky Dam is spilling from 3 gates creating current in the upper lake but expect that to dwindle as the influx of water from the south subsides. For additional info, including generation schedule for Kentucky Lake, visit the TVA website:  
[http://www.tva.gov/lakes/kyh\\_r.htm](http://www.tva.gov/lakes/kyh_r.htm)

**Water Clarity and Temperature ...** The water clarity in both lakes is ideal for fishing. Some areas are clearer than others but overall water quality is looking real good. Surface water temp is 83 degrees.

## Weather Outlook

**Friday...**Partly sunny. Highs in the lower 80s. Northeast winds around 5 mph in the morning shifting to the west in the afternoon.

**Friday Night...**Mostly cloudy with a 20 percent chance of showers and thunderstorms. Lows in the mid 60s. Northwest winds 5 mph.

**Saturday...**Partly sunny. A 20 percent chance of showers and thunderstorms in the morning. Highs in the mid 80s. Northwest winds around 5 mph. **Saturday Night...**Mostly clear. Lows around 60. North winds around 5 mph.

**Sunday...**Mostly sunny. Highs in the lower 80s. **Sunday Night...**Mostly clear. Lows in the lower 60s.

**Monday...**Partly sunny. Highs in the mid 80s. **Monday Night...**Partly cloudy with a 20 percent chance of showers and thunderstorms. Lows in the upper 60s.

## Prime Feeding Times – Gilbertsville, KY 42044

Date	Temps	Sun Data	Moon Data	Moon Phase	Major Times	Minor Times	Prediction
Thursday 7/25/13	H: 83° L: 61°	Rise: 5:53 AM Set: 8:05 PM	Rise: 9:53 PM Set: 9:15 AM Overhead: 3:13 AM Underfoot: 3:39 PM	88% Waning Gibbous	3:13 AM - 5:13 AM 3:39 PM - 5:39 PM	9:15 AM - 10:15 AM 9:53 PM - 10:53 PM	Average
Friday 7/26/13	H: 84° L: 60°	Rise: 5:53 AM Set: 8:04 PM	Rise: 10:27 PM Set: 10:21 AM Overhead: 4:04 AM Underfoot: 4:29 PM	80% Waning Gibbous	4:04 AM - 6:04 AM 4:29 PM - 6:29 PM	10:21 AM - 11:21 AM 10:27 PM - 11:27 PM	Average
Saturday 7/27/13	H: 83° L: 66°	Rise: 5:54 AM Set: 8:03 PM	Rise: 11:01 PM Set: 11:24 AM	70%	4:53 AM - 6:53 AM 5:17 PM - 7:17 PM	11:24 AM - 12:24 PM 11:01 PM - 12:01 AM	Average

			Overhead: 4:53 AM Underfoot: 5:17 PM	Waning Gibbous			
Sunday 7/28/13	H: 82° L: 64°	Rise: 5:55 AM Set: 8:03 PM	Rise: 11:37 PM Set: 12:25 PM Overhead: 5:41 AM Underfoot: 6:05 PM	60% Waning Gibbous	5:41 AM - 7:41 AM 6:05 PM - 8:05 PM	12:25 PM - 1:25 PM 11:37 PM - 12:37 AM	Average
Monday 7/29/13	H: 85° L: 63°	<b>Rise: 5:56 AM</b> Set: 8:02 PM	Rise: --:-- Set: 1:24 PM Overhead: 6:28 AM Underfoot: 6:52 PM	50% Last Quarter	<b>6:28 AM - 8:28 AM</b> 6:52 PM - 8:52 PM	--:-- - --:-- 1:24 PM - 2:24 PM	<b>Average+</b>

## Fishing Report

**Bass Fishing ...** Another good week but frustrating at times. At times we caught fish at will and sometimes we had to really work hard for them. We've had to pull out all of the stops and come up with some new tricks but managed to do pretty good every day. Baitfish are schooling shallow where a current eddy is present and this means main lake points. Steel Shad blade baits are working as well as Zman finesse worms. Don't be surprised to see largemouth in the "jumps" mauling baitfish. A Spinner bait or lipless crank bait rolled just under the surface will catch its fair share of fish. **Ledge Bite ...** Largemouth bass are finding it easier to position themselves on the ledges and feed. 5/8 or 7/16 PJ's Bass Extractor jigs with ZMan Flappin Craws and 7" finesse worms worked good this week but the Steel Shad was again the best bait. The Steel Shad profile mimics a shad to a "T". Ripping it off the bottom seemed to work best. Smallmouth are mixed in with the Largemouth too.

**Top Water Bite ...** With another light willow fly hatch this week and baitfish schooling on the points, top water fishing has made a comeback. Look for banks that have overhanging limbs with the insects dropping in the water and you'll find baitfish and bluegill working the area. The bass aren't far behind. Cast your favorite topwater lure and work it slowly. A good back up plan is casting a small worm or jig to the area especially if bass swipe at your topwater lure and miss. Shallow points at the mouth of the bays are holding good numbers of fish and some are being caught in the back of the bays in the jumps chasing shad. Lipless crank baits and Steel Shad blade baits are the best baits for the jumps.

**Boat Dock Pattern ...** Another pattern worth mentioning is fishing boat docks. Casting small curly tails on 1/16 oz. lead heads caught a surprising number of good bass for us this week. The spawn fry are now large enough for the bluegill and shad to feast on and the bass are making life miserable for all of them. The best docks are ones that have spud poles on the corners. Remember this is a finesse presentation.

**Stripe Bass Fishing ...** We've caught a fair amount of fish in the jumps at the mouths of the creeks and bays and on the main lake flats adjoining the Tennessee River Channel. These jumps are fast and furious and sometimes don't last very long but have produced some very nice fish. Remember when the surface action subsides to let the **Steel Shad blade bait or Ken's Hybrid Spinner** drop below the feeding school ... you'll be surprised how many you can catch that way.



**Bluegill & Redear ...** The mayfly hatch is on again off again and a few scattered hatches were still underway. Docks and bridge piers with overhead lights are attracting some bluegill where flies were hanging and falling to the surface. Overhanging tree limbs close to the surface is a good bet also. Cast to the tree shake the limb and watch the Mayflies hit

the water and its game on. Take a Shelton's Bluegill bug or a Ken's cricket tipped with a piece of red worm, wax worm or cricket and catch some.

**Catfish** ... While we didn't fish for cats specifically we caught more than our share this week on the Steel Shad blade bait.

**Crappie** ... we caught a few when we were fishing for stripes and bass just think how good it might be if we had time to concentrate on these fish. I scanned several submerged tree tops and brush piles in the bays and the fish are there. Try casting a 3/32 oz. leadhead with a Ken's light wire hook and KY Green curly tail and you should do pretty well on the brush piles.

## **Catch Fish & Have Fun on the Kick'n Bass Pontoon**



**(Photo L) The Floarke & Finch group from Iowa with Crappie, Bass, Stripe and Catfish catch. (R) The AJ Halvorsen family & friends from Illinois with a nice catch of Stripes and Bass.**

**Pontoon Fishing is a blast! Check out the smiling faces in the photos. This could be you! Join in on the fun!**

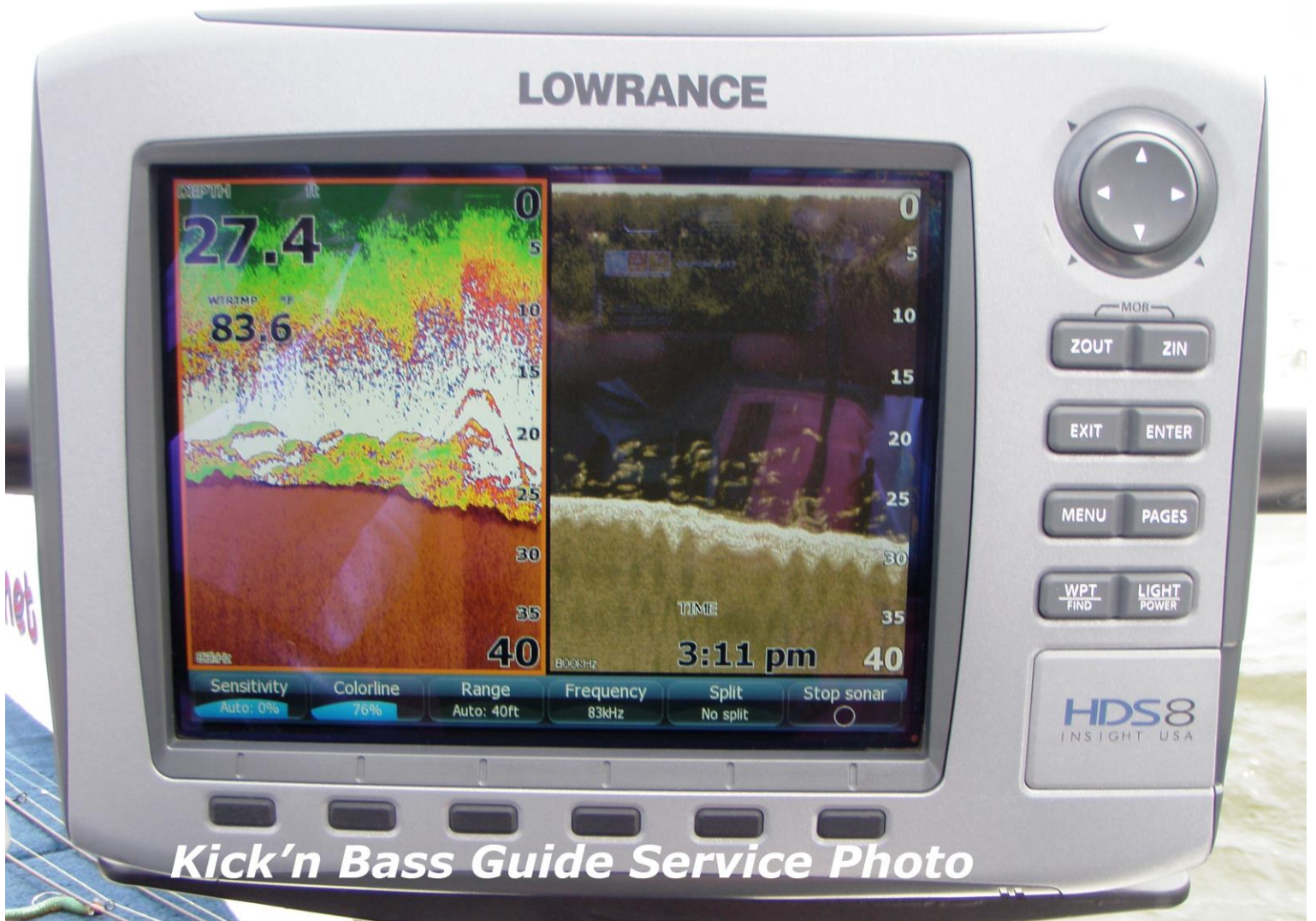
**Get Your Family or Friends Together and Book Your Trip Now!**

If family fishing is your thing or just getting a group together to fellowship then the Kick'n Bass Pontoon is for you! If you want to have a Kick'n Good Time and catch some fish then you ought to book a trip on the Kick'n Bass Pontoon. Pictures tell the story. Check out the smiling faces. These folks had a BLAST!

**Corporate or Company Trip Packages Available Too!**

To book a trip contact [rk@kicknbass.net](mailto:rk@kicknbass.net) or call 270-703-6133

**Sonar Tip of the Week ...**



## Kick'n Bass Guide Service Photo

**The screen shows a school of bass on a ledge feeding on a school of baitfish. Note that the majority of the fish are located 20-25 feet in the water column. Locating the exact position of the fish would not have been possible without the aid of our electronics and most likely we would have fished below the school. To catch these fish we used a Shakey Head and a football head jig. Your electronics can go a long way in helping you find and put more fish in the boat ... Having confidence in using them and knowing what they are telling you is the key!**

**Your system can find schools of fish like this too. If you want to get more out of your HDS system contact [rk@kicknbass.net](mailto:rk@kicknbass.net) for your personal "On the water Sonar Class"**

## **Here's what some of our clients are saying about Kick'n Bass' "On the Water" Sonar Class**

*Randy, I consider myself am a pretty good judge of folks and their capabilities. Lots of folks can "talk" the game. You can "walk the talk" when it comes to the Lowrance units. I am really pleased with what you did to the system setup. There is no doubt in my mind that I would have struggled with technical support to have cleared some of the setup issues that you have been through so many, many times. Thanks for the great class!*

*Lynn Jackson – Hopkinsville, KY.*

**Read the owner's manual or watched a DVD and still baffled? Let's clear up your Sonar confusion. Have your unit(s) programmed and optimized by someone who depends on the HDS technology daily. Together we can make your system more user friendly and you'll get more out of your system.**

**Remember ...** *The first step in our "On the Water Sonar Class" is to perform an inspection of your system to make sure the installation has been done to factory specs and all components are installed in the proper location. If adjustments are needed we can have them made prior to beginning your class. Doing so assures you that your system will perform at a high level and you'll get the most out of your time on the water.*

**The "On the Water Sonar Class" is a one on one, hands on, in your boat using your electronics instruction that will take your understanding and know-how to another level. We get it and you will too!**

## ***Kick'n Bass' 7 Essential Steps to Simplify Using Your HDS System.***

***Kick'n Bass will perform the following ...***

- 1. Complete a detailed inspection on your system to certify the installation has been done to factory specs. (If adjustments are required technicians are available to fine tune your system prior to beginning your class. Doing so assures you that your system will perform at an optimum level and you'll get the most out of your time on the water).***
- 2. Check all network settings for compatibility and make adjustments if needed.***
- 3. Program the individual screens and install the overlay data that is best suits the type fishing you do. Example: Depth, Water Temp, Time, etc. Eliminate unwanted, non-practical on screen clutter that hampers using your unit to its maximum potential.***
- 4. Arrange the screens so that going from page to page is orderly and non-confusing. You'll become familiar with the screens and commands and what they'll do for you.***
- 5. Dial in Sonar and Structure Scan Graphics and choose appropriate Palette for the lakes you fish.***
- 6. Demonstrate the art of waypoint management. No more cluttered maps with useless or unproductive waypoints. You'll learn to identify which locations are waypoint worthy and how to go back to those locations without ever assigning a waypoint. You'll assign a waypoint once you are satisfied the location is worth saving.***
- 7. Demo the unit so you'll be able to take advantage of its fish finding capabilities. You'll learn to identify shell beds, submerged stumps, brush piles, ledges, game fish species and more.***

As a bonus Kick'n Bass will help you learn to read an electronic topo map and find "places of interest" that could be potential fishing hot spots.

## **The Best Bow Mount Sonar Bracket Ever Works on Virtually All Boats (Patent Pending)**



**Phoenix Bow Mount Bracket**

**Ranger Z520c**



**Triton Bow Mount Bracket**

**Blazer Bow Mount Bracket**



**Order Direct and \$ave**  
**[rk@kicknbass.net](mailto:rk@kicknbass.net)**

**Check out the product  
review on [Wired2fish.com](http://Wired2fish.com)**

**<http://wired2fish.com/kickn-bass-sonar-bracket-review-p17741>**

## **NITRO Z-7 Bow Mount Bracket**