



**To Book a trip call 270-703-6133 or visit our website  
[www.kicknbass.net](http://www.kicknbass.net)**

**June 7, 2013**

**Lake Conditions**

**Lake Levels ...** Looking at the amount of water that is on my access road it appears to me that we are at least a foot and maybe then some over summer pool. With the amount of rainfall we've had in the last 24 hours plus what they may have received down south the lake level could change. For additional info, including generation schedule for Kentucky Lake, visit the TVA website:  
[http://www.tva.gov/lakes/kyh\\_r.htm](http://www.tva.gov/lakes/kyh_r.htm)

**Water Clarity and Temperature ...** Kentucky Lake ranges from slightly stained in the back of the bays to the main lake dingy in spots but clearing. Barkley is dingy in the main lake but the bays look just right. Main Lake surface water temps are in the 75 degree range with the back of the bays warming to the high 70's to low 80's on sunny days.

**Weather Outlook**

- Friday...**Partly sunny. Highs in the upper 70s. Northwest winds 5 to 10 mph.
- Friday Night...**Partly cloudy. Lows around 60. Northwest winds 5 to 10 mph.
- Saturday...**Partly sunny. Highs in the upper 70s. West winds 5 mph.
- Saturday Night...**Mostly clear. Lows in the lower 60s. South winds 5 mph.
- Sunday...**Partly sunny with a 30 percent chance of showers and thunderstorms. Highs in the lower 80s.
- Sunday Night...**Partly cloudy with a 50 percent chance of showers and thunderstorms. Lows in the upper 60s.
- Monday...**Partly sunny with a 20 percent chance of showers and thunderstorms. Highs in the mid 80s.

**Prime Feeding Times – Gilbertsville, KY 42044**

Date	Temps	Sun Data	Moon Data	Moon Phase	Major Times	Minor Times	Prediction
Friday 6/7/13	H: 76° L: 65°	Rise: 5:33 AM Set: 8:10 PM	Rise: 4:54 AM Set: 7:25 PM Overhead: 12:09 PM Underfoot: --:--	1% Waning Crescent	--:-- - --:-- 12:09 PM - 2:09 PM	4:54 AM - 5:54 AM 7:25 PM - 8:25 PM	Best
Saturday 6/8/13	H: 76° L: 59°	Rise: 5:33 AM Set: 8:10 PM	Rise: 5:39 AM Set: 8:14 PM Overhead: 12:57 PM Underfoot: 12:33 AM	0% NEW MOON	12:33 AM - 2:33 AM 12:57 PM - 2:57 PM	5:39 AM - 6:39 AM 8:14 PM - 9:14 PM	Best
Sunday 6/9/13	H: 80° L: 60°	<b>Rise: 5:33 AM</b> <b>Set: 8:11 PM</b>	<b>Rise: 6:27 AM</b> <b>Set: 8:59 PM</b>	1%	1:21 AM - 3:21 AM 1:45 PM - 3:45 PM	<b>6:27 AM - 7:27 AM</b> <b>8:59 PM - 9:59 PM</b>	<b>Better++++</b>

Monday 6/10/13	H: 85° L: 66°	Rise: 5:33 AM Set: 8:11 PM	Rise: 7:19 AM Set: 9:41 PM Overhead: 2:33 PM Underfoot: 2:09 AM	4% Waxing Crescent	2:09 AM - 4:09 AM 2:33 PM - 4:33 PM	7:19 AM - 8:19 AM 9:41 PM - 10:41 PM	Bette

## Fishing Report

### Bass Fishing ...



**Smallmouth Bass ...** I consider this time of year the best time to catch a trophy smallmouth bass on Kentucky Lake. This week Kick'n Bass Guide Service had a number of firsts.

First, two clients both caught their personal best Smallmouth bass. Secondly, for all my years of fishing on Kentucky Lake, I had never caught a smallmouth over 6 pounds and this week I finally caught one over 7 pounds. The great thing about fishing is you never get too old or fish too many days to lose the thrill of catching your best fish

ever. Even better yet; being a fishing guide you get to relive it all over again when your client catches their best fish ever. I am very fortunate to be able to share the boat with so many great folks and witness the thrill of them catching a fish of a lifetime.

*(Photos L-R) Kick'n Bass with a 7.1 & 5.5 smallmouth bass, The Halloran boys Tristan and his dad Mike from Cincinnati knocked them dead fishing from the Pontoon. Congratulations to Mike for catching his best ever Smallmouth Bass. All fish in the photos were caught on a **Steel Shad** blade bait. Kick'n Bass Promotes CPR (Catch-Photograph -Release) on bass.*

**Fishing the Ledges ...** We've found schools of fish on the main lake ledges 18-22 feet deep they have been cooperative. However not all ledges have these schools. My observation is that the fish are just beginning to school up in these areas. Best methods have been dragging a Shakey Head or a football jig with a ZMan Flappin Craw along the bottom. Our biggest fish this week have come from the ledges with clients catching some really large fish. These are post spawn females. *(Photo R) Larry Simpson from Lawrenceburg, KY with a couple of nice largemouth bass caught on the ledges.*

**Boat Dock Pattern ...** The boat dock pattern is a much overlooked way to fish right now. Boat docks are holding fish especially the older docks with spud poles. Spud poles are the big metal poles on the corners of the dock that allows the dock to raise up and down with the water levels. There is a lot of fry milling around the docks and baitfish and bluegills are feeding which is attracting the bass. Almost any lure will catch fish providing it is used in a finesse



presentation. A ZMan Zinkerz, which is a Senko look alike, fish weightless is a very good technique for this type of fishing. Our biggest fish of the week come from a main lake dock using this method.

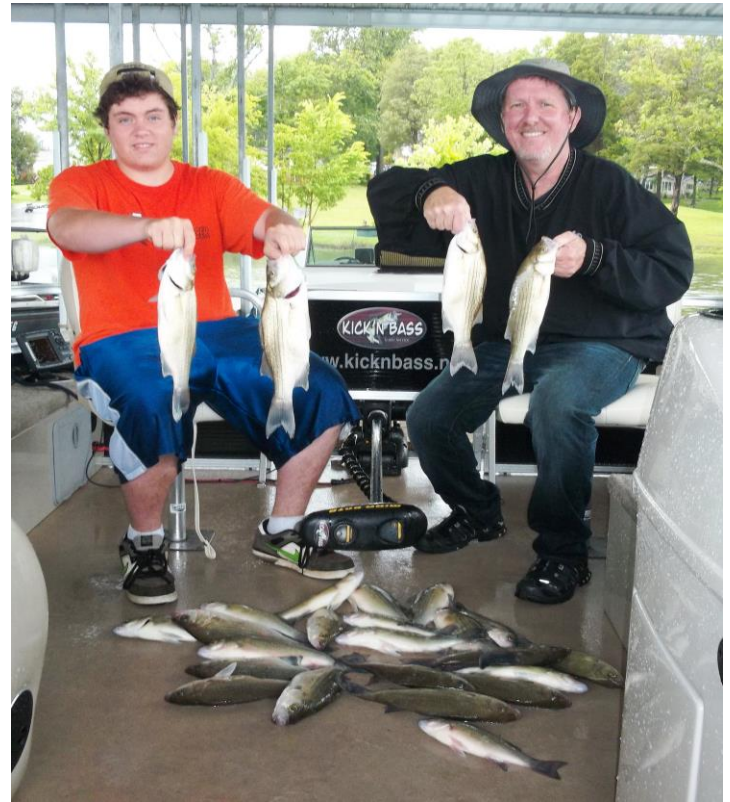
**Bluegill & Redear ...** Although the mad rush seems to be subsiding we still caught enough Redear to keep things interesting. Best tactic was to cast a **Shelton's Bluegill Bug** tipped with a piece of red worm, wax worm or cricket. Look for gravel banks in the back of the bays with some wood and you'll be in business. Remember, think deeper than bluegill and your catch will improve. By the way the Redear this year have been huge.

**White Bass ...** The whites are showing up with regularity and we've been catching them on **Steel Shad blade baits** and **Ken's Hybrid spinners**. The whites are deep and relating to current on the main lake and near the mouth of the bays.

**Crappie ...** Ditto from last week. Basically crappie fishing is being overshadowed by Bass and Redear and Bluegill fishing. The bottom line is Crappie aren't getting as much attention as they deserve with Bass, Redear and Bluegill fishing dominating the news right now.

**Kick'n Bass Guide Service practices CPR (Catch-Photo-Release) on all bass.**

## **Catch Fish & Have Fun on *the Kick'n Bass Pontoon***



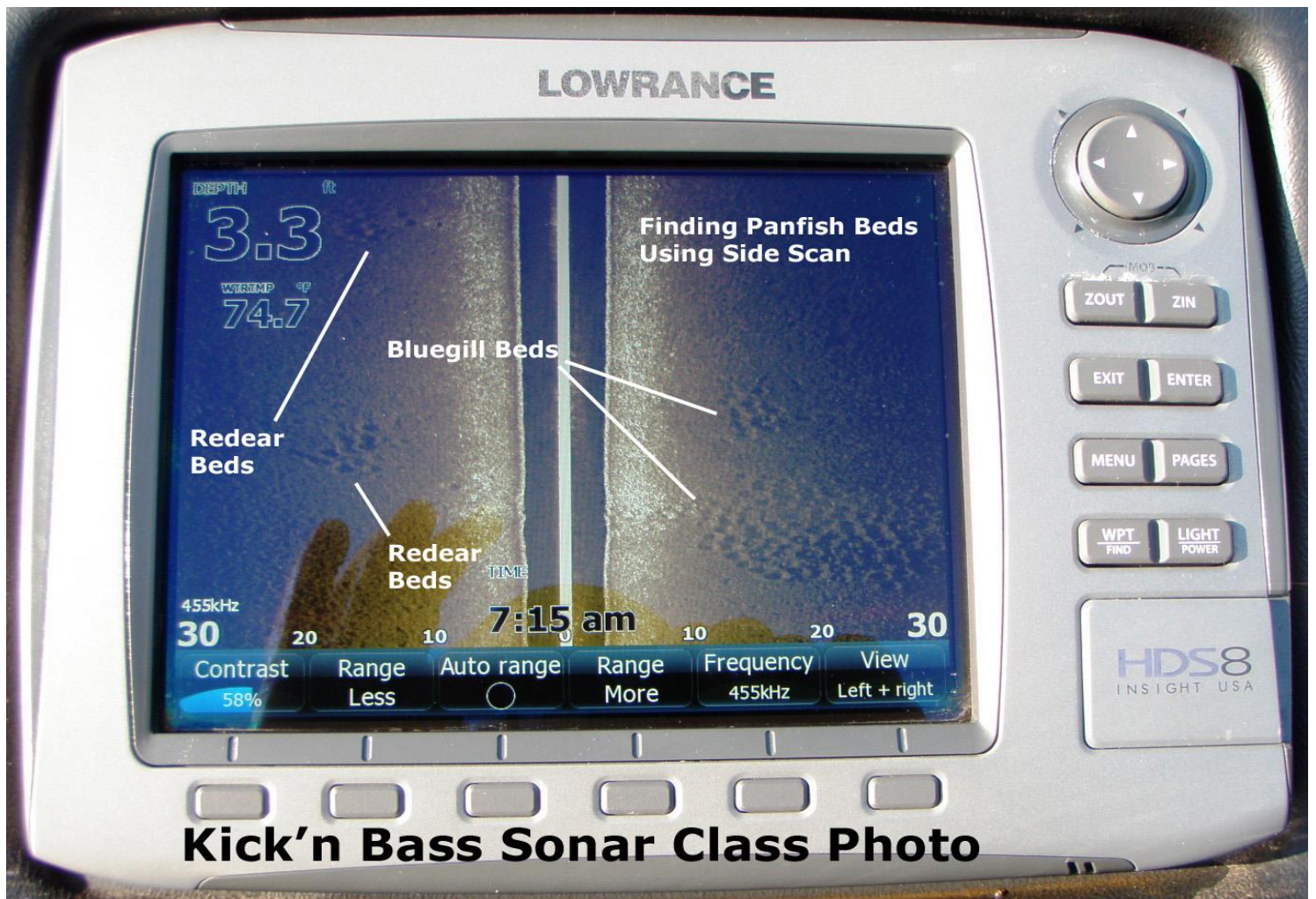
*(Photo L) The Elder Group from Indiana with a huge stripe and catfish catch. Back Row - Marty Elder, Capt. Rich Bay and Derek Kunard, (Front Row) James Hill and Kenneth Beasley. (Photo Right) The Halloran boys, Tristan and his dad Mike from Cincinnati caught a lot of huge white bass fishing from the Pontoon.*

If family fishing is your thing or just getting a group together to fellowship then the Kick'n Bass Pontoon is for you! If you want to have a Kick'n Good Time and catch some fish then you ought to book a trip on the Kick'n Bass Pontoon. Pictures tell the story. These folks did and had a BLAST!

**Corporate or Company Trip Packages available.**

**To book a trip contact [rk@kicknbass.net](mailto:rk@kicknbass.net) or call 270-703-6133**

## Sonar Tip of the Week ...



*Without High Definition Electronics finding late season bedding panfish can be like finding a needle in a haystack. A properly tune and programmed system will put you in a position to make the most of your time on the water and increase the odds in your favor. We found these immense beds and caught all the 'gills we wanted to clean and even caught a few nice redear. Without our Lowrance HDS system and SideScan technology we'd probably drawn a blank!*

*Be the best angler you can be by learning to use your electronics to their full potential. For your personalized "On the water Sonar Class" contact Lowrance Pro Staffer Randy Kuhens at [rk@kicknbass.net](mailto:rk@kicknbass.net)*

## Here's what some of our clients are saying about Kick'n Bass' "On the Water" Sonar Class ...

*Randy, thanks a bunch for the class it was just what I needed to put it all together. I can't wait to use it on those St. Clair smallies.*

*Tom Redmond - Dowigiac, MI.*

*Randy, Thanks for taking time to look my system over. Since I didn't know how to use my system I didn't realize I had issues. My system now looks nothing like it did before and that's a good thing. Glad I ran into you and the class was the bomb!*

*Carl Buetanbach - Fairmont, Wva.*

**Remember ...** *The first step in our "On the Water Sonar Class" is to perform an inspection of your system to make sure the installation has been done to factory specs and all components are installed in the proper location. If adjustments are needed we can have them made prior to beginning your class. Doing so assures you that your system will perform at a high level and you'll get the most out of your time on the water.*

**The "On the Water Sonar Class" is a one on one, hands on, in your boat using your electronics instruction that will take your understanding and know-how to another level. We get it and you will too!**

## ***Kick'n Bass' 7 Essential Steps to Simplify Using Your HDS System.***

***Kick'n Bass will perform the following ...***

- 1. Complete a detailed inspection on your system to certify the installation has been done to factory specs. (If adjustments are required technicians are available to fine tune your system prior to beginning your class. Doing so assures you that your system will perform at an optimum level and you'll get the most out of your time on the water).***
- 2. Check all network settings for compatibility and make adjustments if needed.***
- 3. Program the individual screens and install the overlay data that is best suits the type fishing you do. Example: Depth, Water Temp, Time, etc. Eliminate unwanted, non-practical on screen clutter that hampers using your unit to its maximum potential.***
- 4. Arrange the screens so that going from page to page is orderly and non-confusing. You'll become familiar with the screens and commands and what they'll do for you.***
- 5. Dial in Sonar and Structure Scan Graphics and choose appropriate Palette for the lakes you fish.***
- 6. Demonstrate the art of waypoint management. No more cluttered maps with useless or unproductive waypoints. You'll learn to identify which locations are waypoint worthy and how to go back to those locations without ever assigning a waypoint. You'll assign a waypoint once you are satisfied the location is worth saving.***
- 7. Demo the unit so you'll be able to take advantage of its fish finding capabilities. You'll learn to identify shell beds, submerged stumps, brush piles, ledges, game fish species and more.***

**As a bonus Kick'n Bass will help you learn to read an electronic topo map and find "places of interest" that could be potential fishing hot spots.**

# The Best Bow Mount Sonar Bracket Ever Works on Virtually All Boats



Phoenix Bow Mount Bracket



Triton Bow Mount Bracket



Blazer Bow Mount Bracket - On Deck Installation

**Order Direct and Save**  
[rk@kicknbass.net](mailto:rk@kicknbass.net)

**Check out the product  
review on**  
**Wired2fish.com**  
<http://wired2fish.com/kicknbass-sonar-bracket-review-p17741>