



**To Book a trip call 270-703-6133 or visit our website  
[www.kicknbass.net](http://www.kicknbass.net)**

**May 17, 2013**

## Lake Conditions

**Lake Levels ...** As of this morning both lakes are approximately 2 feet over summer pool and falling as TVA brings the lake level to normal summer pool, which I expect to be by Monday or Tuesday at the latest. This is of course if we don't receive an influx of unexpected water from the south. For additional info, including generation schedule for Kentucky Lake, visit the TVA website:  
[http://www.tva.gov/lakes/kyh\\_r.htm](http://www.tva.gov/lakes/kyh_r.htm)

**Water Clarity and Temperature ...** Kentucky Lake ranges from slightly stained in the back of the bays to the main lake dingy but clearing. Barkley is stained in the creeks and bays and the main lake is murky but clearing. Surface water temps are in the 68 degree range with the back of the bays warming to the low 70's on sunny days.

## Weather Outlook

**Friday...**Cloudy with a 40 percent chance of showers and thunderstorms. Highs in the upper 70s. South winds 5 to 10 mph.

**Friday Night...**Mostly cloudy with a 30 percent chance of showers and thunderstorms. Lows in the mid 60s. South winds 5 to 10 mph.

**Saturday...**Mostly cloudy with a 40 percent chance of showers and thunderstorms. Highs around 80. Southwest winds 5 to 10 mph.

**Saturday Night...**Mostly cloudy with a 20 percent chance of showers and thunderstorms. Lows in the mid 60s. South winds 5 mph.

**Sunday...**Partly sunny. Highs in the mid 80s.

**Sunday Night...**Partly cloudy. Lows in the upper 60s.

**Monday...**Mostly sunny. Highs in the mid 80s.

**Monday Night...**Partly cloudy with a 20 percent chance of showers and thunderstorms. Lows in the upper 60s.

## Prime Feeding Times – Gilbertsville, KY 42044

Date	Temps	Sun Data	Moon Data	Moon Phase	Major Times	Minor Times	Prediction
Friday 5/17/13	H: 81° L: 61°	Rise: 5:43 AM Set: 7:55 PM	Rise: 12:11 PM Set: 12:51 AM Overhead: 6:52 PM Underfoot: 6:30 AM	50% First Quarter	6:30 AM - 8:30 AM 6:52 PM - 8:52 PM	12:51 AM - 1:51 AM 12:11 PM - 1:11 PM	Average+
Saturday 5/18/13	H: 81° L: 65°	Rise: 5:42 AM Set: 7:56 PM	Rise: 1:09 PM Set: 1:24 AM Overhead: 7:37 PM	55% Waxing	7:14 AM - 9:14 AM 7:37 PM - 9:37 PM	1:24 AM - 2:24 AM 1:09 PM - 2:09 PM	Average

			Underfoot: 7:14 AM	Gibbous			
Sunday 5/19/13	H: 85° L: 68°	Rise: 5:42 AM Set: 7:57 PM	Rise: 2:09 PM Set: 1:56 AM Overhead: 8:23 PM Underfoot: 8:00 AM	65% Waxing Gibbous	8:00 AM - 10:00 AM 8:23 PM - 10:23 PM	1:56 AM - 2:56 AM 2:09 PM - 3:09 PM	Average
Monday 5/20/13	H: 84° L: 68°	Rise: 5:41 AM Set: 7:58 PM	Rise: 3:11 PM Set: 2:28 AM Overhead: 9:11 PM Underfoot: 8:47 AM	75% Waxing Gibbous	8:47 AM - 10:47 AM 9:11 PM - 11:11 PM	2:28 AM - 3:28 AM 3:11 PM - 4:11 PM	Average

*(Photos) Ron Salings and Rusty Burnett from Louisville, KY with some monster Redear and Largemouth Bass caught yesterday fishing with Kick'n Bass.*



*Catching fish is what I like to do. I visit KY Lake because I know the lake provides me with the best opportunity to be successful. Quality time is important to me and that's why I like fishing with Kick'n Bass. Randy is a multi-species fishing guide and keeps me on fish. On our trip we caught some really nice bass early and ended our day catching some huge redeer and bluegill. If you're like me and want to learn new ways to catch different species of fish and have a great time doing it then give Kick'n Bass a call.*

*Rusty Burnett - Louisville, KY*

## Fishing Report

### Bluegill & Redear ...

All I can say is ... WOW! Once the wind died down it was business as usual and the big redeer and bluegill began showing up in large numbers. We had several trips where we caught more than we deserved. Best tactic was to cast a **Shelton's Bluegill Bug** tipped with a piece of red worm, wax worm or cricket. Look for gravel banks in the back of the bays with some wood and you'll be in business. I get asked quite often what type of rod & reel and line do we use for crappie and bluegill fishing. My clients always make mention how they love the rods and reels we use for this type of fishing. We use Shimano Clarus 6' Medium /





Light rods and Sedona reels loaded with 8 lb. yellow Power Pro Braided line with a matching fluorocarbon leader. With this combination retrieves are at a minimum, the bug casts like a rocket and you get the full effect of the fight. What could be more fun. The tackle shops around the lakes area keep these combos and baits in stock.

**White Bass ...** The whites are showing up with regularity and we've been catching them on **Steel Shad blade baits** and **Ken's Hybrid spinners**. The whites are deep and relating to current on the main lake and near the mouth of the bays.

**Crappie ...** Since Bass fishing and Redear & Bluegill are so darn hot we haven't been able to devote much time to crappie fishing. I can tell you that wherever we seem to catch bass or panfish the crappie are showing up. That tells me that they're still in relatively shallow water and willing to be caught. We did hit a brush pile or two on the way to bass fish and they were on them pretty good so some crappie are transitioning their way to the deeper stake beds and brush piles. We've seen anglers dressing them at the cleaning stations too.

## Bass Fishing ...

*(Photo) Bill Nix from Indiana with some real nice post-spawn females caught on Steel Shad blade bait.*



We've spent a lot of time bass fishing this week and our results have shown a great deal of bass to be in transition to and from the spawning grounds. We've caught both pre and post-spawn fish on main lake points as well as in the bays along creek channels and drops. A surprising number of fish we've caught have yet to spawn. With the full moon on the 24<sup>th</sup> expect another huge wave of females to spawn. I am of the opinion that this spawn will be much larger than the one we had in April.

As you read this we still have more water than normal and some fish are being caught flipping and pitching flooded bushes. Over the weekend we will still have water over normally dry bushes so this pattern will hold for another day or two. Be advised that TVA is pulling water round the clock so this pattern will definitely change. As the water level drops expect a lot of fish to retreat to the bushes at normal pool level.

Like I said earlier a lot of fish are in transition. Some huge post-spawn females are on the flats

feeding along with pre-spawn females that are heading to the nesting sites. We caught a lot of good fish casting Steel Shad blade baits. Best colors on the Steel Shad are Silver on sunny days and Gold on cloudy days. The Steel Shad has just the right profile and action to mimic a baitfish which is what the bass are feeding on.

Also we've had some success dragging shakey heads along main lake gravel points. The best lure has been the PJ's Bass Extractor jig and ZMan finesse worm. Spinner baits and Crank baits in shad pattern fished along main lake points are catching a few fish also. The ledge bite is in its early stages but is a pattern that will change and get better daily. As you can see there is a lot of ways to catch bass and a lot of it depends on timing, water levels and current. Pay attention to the Prime Feeding times and you'll do a lot better.

# Catch Fish & Have Fun on *the Kick'n Bass Pontoon!*

*(Photo) Laura Blair, Ron & Kathy McCoy form Illinois with a bunch of white bass caught fishing from the Kick'n Bass Pontoon.*

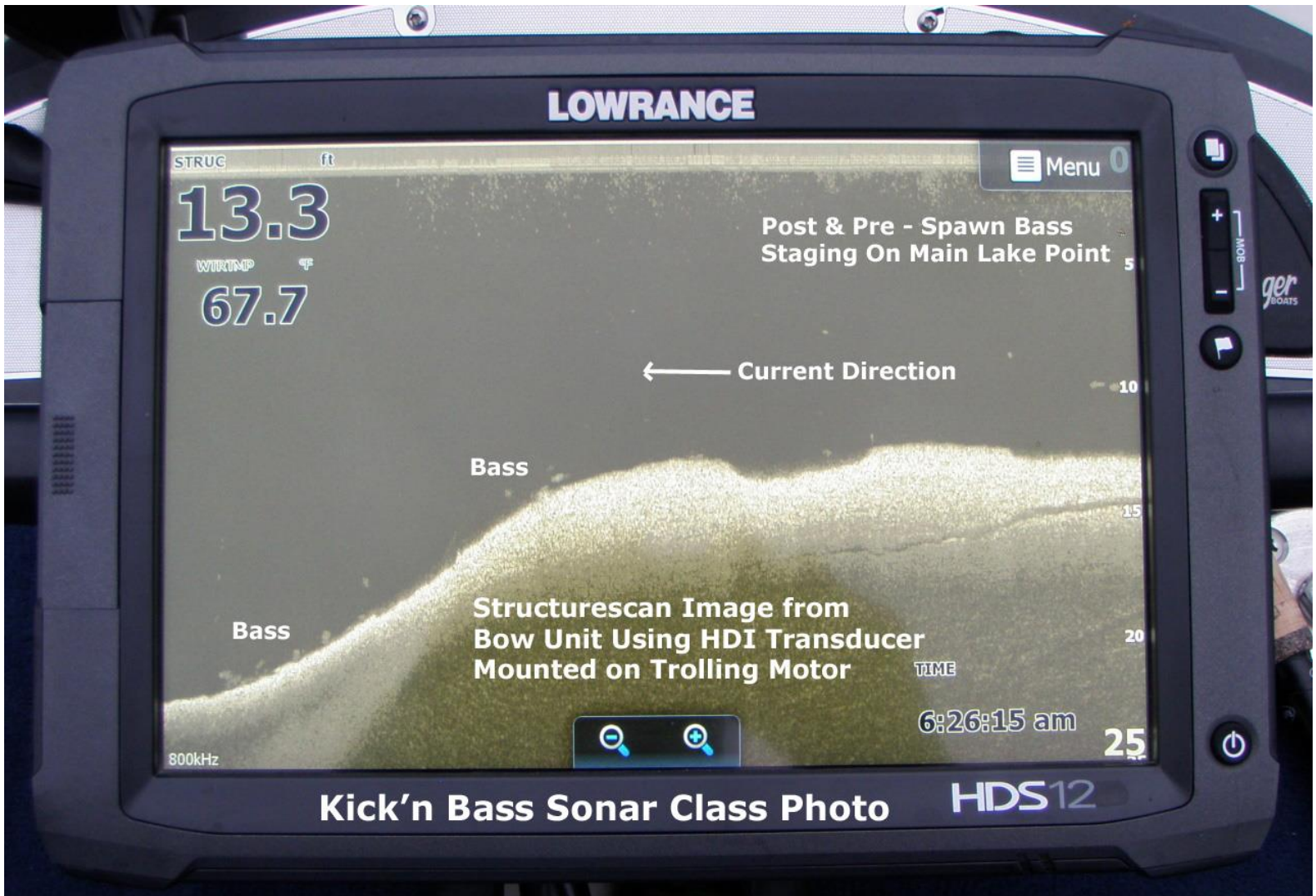
*Randy I want to thank you and especially Capt. Rich for the great time we had on the pontoon. The ladies had never thrown a lure before and Capt. Rich was very patient with them and we caught a LOT of fish. I can't believe how much they talked about their trip and now they have a favorite guide of all time! Thanks again! they are already figuring out when to come back.*

*Ron McCoy - Illinois*

What's nice about this type of fishing is you can go as a group and have a good time at a leisurely pace. The pontoon can fish up to 6 anglers. To book a trip contact [rk@kicknbass.net](mailto:rk@kicknbass.net)



## **Sonar Tip of the Week ...**





*One of the really neat things about the new Touch screen units is, by adding a HDI Transducer to the trolling motor, it enables the angler to have Downscan at the bow unit. In this photo you can see the fish and their position relative to current. Also notice the depression in front of the drop. The depression created a break in the current and positioned the fish on the drop where we could get a shakey head to them. We caught several really nice fish from this location. With only a regular Sonar unit, it would have been easy to miss this prime location.*

*Be the best angler you can be by learning to use your electronics to their full potential. For your personalized "On the water Sonar Class" contact Lowrance Pro Staffer Randy Kuhens at [rk@kicknbass.net](mailto:rk@kicknbass.net)*

## **Here's what some of our clients are saying about Kick'n Bass' "On the Water" Sonar Class ...**

*Randy, I just wanted to let you know how much I enjoyed your class. It was well worth the time and Investment. The Erie walleyes are in trouble now!*

*Paul Priestly – Indiana*

*Randy, What a relief, I can actually use my system like it was intended to be used. I'll recommend your class to all my friends and relatives.*

*Carl Kleine – St. Louis, Mo.*

**Remember ...** *The first step in our "On the Water Sonar Class" is to perform an inspection of your system to make sure the installation has been done to factory specs and all components are installed in the proper location. If adjustments are needed we can have them made prior to beginning your class. Doing so assures you that your system will perform at a high level and you'll get the most out of your time on the water.*

**The "On the Water Sonar Class" is a one on one, hands on, in your boat using your electronics instruction that will take your understanding and know-how to another level. We get it and you will too!**

## **Kick'n Bass' 7 Essential Steps to Simplify Using Your HDS System.**

**Kick'n Bass will perform the following ...**

- 1. Complete a detailed inspection on your system to certify the installation has been done to factory specs. (If adjustments are required technicians are available to fine tune your system prior to beginning your class. Doing so assures you that your system will perform at an optimum level and you'll get the most out of your time on the water).**
- 2. Check all network settings for compatibility and make adjustments if needed.**
- 3. Program the individual screens and install the overlay data that is best suits the type fishing you do. Example: Depth, Water Temp, Time, etc. Eliminate**

unwanted, non-practical on screen clutter that hampers using your unit to its maximum potential.

4. Arrange the screens so that going from page to page is orderly and non-confusing. You'll become familiar with the screens and commands and what they'll do for you.
5. Dial in Sonar and Structure Scan Graphics and choose appropriate Palette for the lakes you fish.
6. Demonstrate the art of waypoint management. No more cluttered maps with useless or unproductive waypoints. You'll learn to identify which locations are waypoint worthy and how to go back to those locations without ever assigning a waypoint. You'll assign a waypoint once you are satisfied the location is worth saving.
7. Demo the unit so you'll be able to take advantage of its fish finding capabilities. You'll learn to identify shell beds, submerged stumps, brush piles, ledges, game fish species and more.

As a bonus Kick'n Bass will help you learn to read an electronic topo map and find "places of interest" that could be potential fishing hot spots.

## **The Best Bow Mount Sonar Bracket Ever Works on Virtually All Boats**



**Phoenix Bow Mount Bracket**



**Triton Bow Mount Bracket**

**Order Direct and Save [rk@kicknbass.net](mailto:rk@kicknbass.net)**

**Check out the product review on [Wired2fish.com](http://wired2fish.com/kickn-bass-sonar-bracket-review-p17741)  
<http://wired2fish.com/kickn-bass-sonar-bracket-review-p17741>**