



To Book a trip call 270-703-6133 or visit our website
www.kicknbass.net

March 29, 2013

Lake Conditions

Lake Levels ... As of this morning both lakes are approximately 1 foot above winter pool and on a slow rise. For additional info, including generation schedule for Kentucky Lake, visit the TVA website:
http://www.tva.gov/lakes/kyh_r.htm

Water Clarity and Temperature ... Kentucky Lake ranges from stained in some of the creeks to the main lake dingy. Barkley is heavily stained in the creeks and bays and the main lake is stained. Surface water temps are in the 48 degree range. *Always wear your PFD and keep an extra change of clothes on board. Advise others of your fishing plans.*

Weather Outlook

Friday...A chance of showers in the morning...Then showers likely in the afternoon. Highs in the mid 50s. Southeast winds 5 to 10 mph. Chance of precipitation 60 percent.

Friday Night...Mostly cloudy with a 50 percent chance of showers. Lows in the mid 40s. Southeast winds around 5 mph.

Saturday...Mostly cloudy with a 20 percent chance of showers. Highs in the lower 60s. Southeast winds 5 to 10 mph.

Saturday Night...Showers likely and a chance of thunderstorms. Lows in the lower 50s. Southwest winds 5 to 10 mph. Chance of precipitation 60 percent.

Sunday...Partly sunny. A chance of showers and a slight chance of thunderstorms in the morning. Highs in the lower 60s. Chance of precipitation 30 percent.

Sunday Night...Mostly clear. Lows in the lower 40s.

Monday...Mostly cloudy with a 50 percent chance of rain. Highs in the lower 50s.

Prime Feeding Times – Gilbertsville, KY 42044

Date	Temps	Sun Data	Moon Data	Moon Phase	Major Times	Minor Times	Prediction
Friday 3/29/13	H: 54° L: 38°	Rise: 6:42 AM Set: 7:13 PM	Rise: 10:07 PM Set: 7:56 AM Overhead: 2:31 AM Underfoot: 2:59 PM	93% Waning Gibbous	2:31 AM - 4:31 AM 2:59 PM - 4:59 PM	7:56 AM - 8:56 AM 10:07 PM - 11:07 PM	Good
Saturday 3/30/13	H: 57° L: 44°	Rise: 6:41 AM Set: 7:13 PM	Rise: 11:14 PM Set: 8:42 AM Overhead: 3:27 AM Underfoot: 3:56 PM	86% Waning Gibbous	3:27 AM - 5:27 AM 3:56 PM - 5:56 PM	8:42 AM - 9:42 AM 11:14 PM - 12:14 AM	Average
Sunday 3/31/13	H: 60° L: 48°	Rise: 6:39 AM Set: 7:14 PM	Rise: --:-- Set: 9:34 AM Overhead: 4:26 AM Underfoot: 4:55 PM	77% Waning Gibbous	4:26 AM - 6:26 AM 4:55 PM - 6:55 PM	--:-- - --:-- 9:34 AM - 10:34 AM	Average

Fishing Report – Crappie Fishing Is Hot From the Kick'n Bass Pontoon!



Crappie ... Overall fishing has been pretty good this week! Decent numbers have been coming in from the Kick'n Bass Pontoon fishing the flats in the bays using 1/16 oz jigs in Blue and Chartreuse or Electric Chicken. Both White & Black Crappie are being caught. Most fish are being caught spider rigging or long line trolling. Also Crappie are being caught vertically fishing with minnows over submerged cover in 12-14 feet. These are primarily White Crappie.

(Photo Left to Right) Tobee Keesee, Jeff Daugerty, Scott Pile & Neal Basham from Louisville are all smiles after catching some nice crappie fishing from the Kick'n Bass Pontoon.



This week with the water temps elevating somewhat we've found a few fish have moved towards shallower cover in 6-8 feet. Kick'n Bass clients have caught some real nice fish casting KY Green curly tails with Ken's Blue Pearl light wire lead heads. What's nice about the light wire lead heads is they enable you to fish submerged brush without the fear of getting hung up. If you do hang up a steady but gentle pull usually dislodges the lure and sometimes when this happens you'll get bit.

(Photo) Phil and Sharon Czarnecki and Bill and Donna Butler from South Bend, IN. with some nice crappie caught while fishing on the Kick'n Bass pontoon.



*(Photo Left) Steve, Brendon and Austin Petrovich, Nashville, TN. with some nice crappie caught fishing from The Kick'n Bass Pontoon. Congratulations to Austin who caught his biggest crappie ever on the trip a **15 inch fish.***

"Tip of the Week"

While catching fish & having fun is certainly a priority, so is providing my clients with useful information to help them become better anglers. It's important to me that at the end of the day the client feels time spent with me was worthwhile. I think it helps me to be a better guide. This week we're going to examine a line set up that I have found to be very effective on spinning gear when

casting for crappie. There are many line choices available for casting crappie jigs. The ideal line for this application must be durable, cast easy and have good feel.



(Photo) Jim Walton and Ron Le Beau from Sugar Grove, IL. And Bill Davis La Ports , IN.

When long casts are necessary to get the lure where the crappies live, in brush, rock, etc. and feel is real important to detect those light bites, braided line really comes into its own. While braided line solves those issues, it does create another dilemma. Fish can see braided line and could shy away from an unnatural presentation. Adding a three foot fluorocarbon leader addresses the visibility issue and makes the jig appear as though it is swimming on its own. My braid of choice is Yellow 8lb Power Pro. With a small diameter allowing for easy casts, power Pro is extremely durable and the yellow color allows me to follow the line. My fluorocarbon leader choice is P-Line 8lb 100% Fluorocarbon which is smooth as silk and is extremely strong. The two lines are joined using a double uni-knot. This set up provides me with the ultimate in ease of casting, durability and feel. To eliminate loops and wind knots I manually close the bail on the reel after every cast. To learn how to tie the double uni-knot Check out this website <http://videofishingknots.com/double-uni-knot.html> The next time you go crappie fishing spool your favorite spinning reel with braid and tie on a fluorocarbon leader. I think you'll feel what you been missing and you'll catch more crappie. (Photo) Nancy, Maverick and Rich Hesselbaum from Oswego, IL. **The Kick'n Bass Pontoon is HOT!**



Book Your Pontoon Fishing Trips NOW!!!

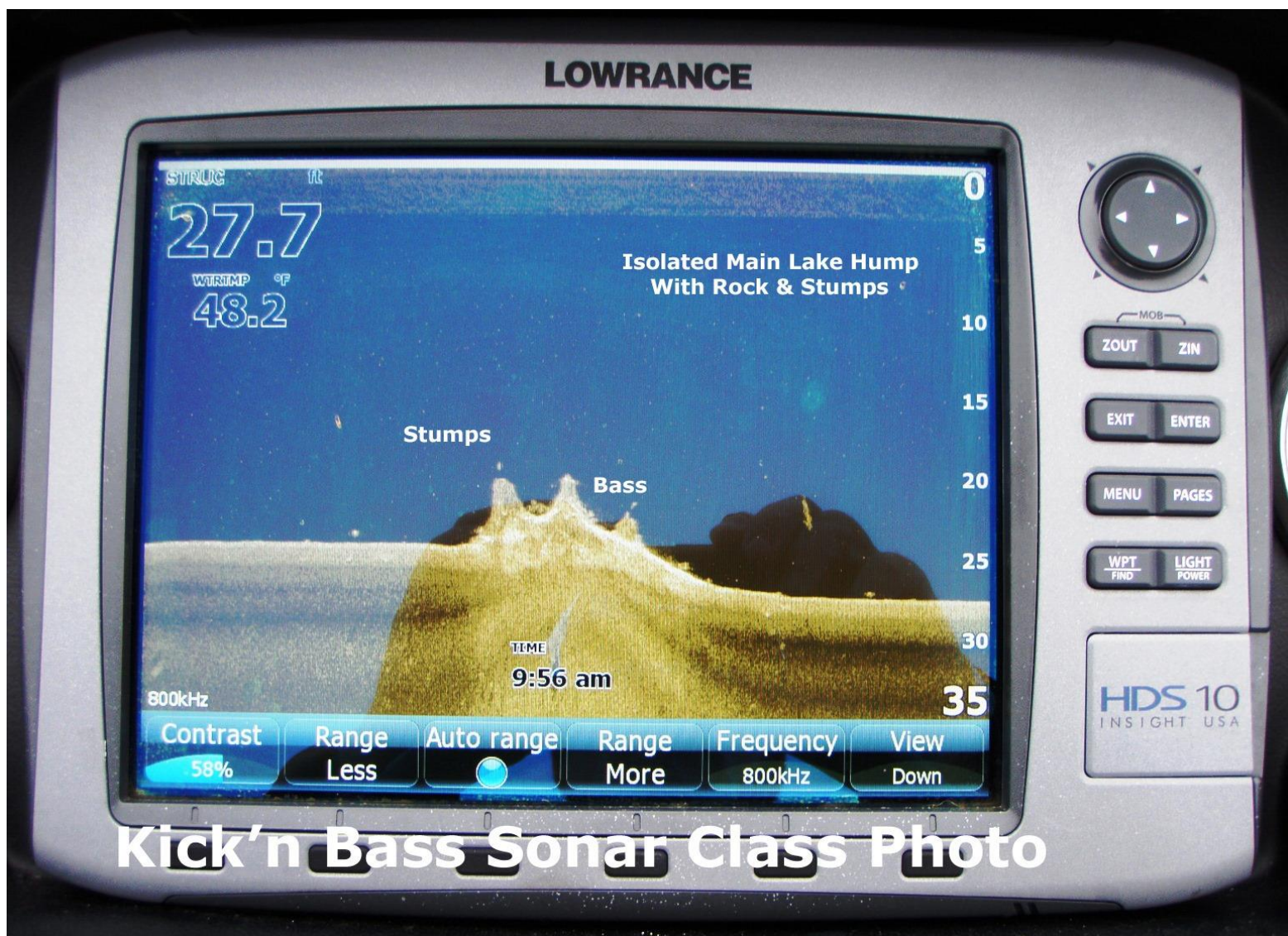


Check out the pontoon video <http://www.youtube.com/watch?v=DIjRXQe4FfI>

Don't be disappointed Book NOW and get the dates you want!

Bass Fishing ... On warmer afternoons we've caught some nice fish on A-Rigs and Steel Shad Blade baits working main lake gravel bars. Main Lake chunk rock banks with deeper water nearby have been good areas to drag a PJ's bass extractor shakey head and ZMan 7" finesse worm. Some fish are being caught in very shallow water in the back of the bays. We noticed this week that fish caught early were very light biters and the more aggressive bites were coming in the afternoon hours.

SONAR TIP OF THE WEEK ...



Talk about finding a needle in a haystack ... The isolated hump with stumps on it provided a couple of hours of really good bass fishing. We stumbled on it during one of our Sonar Classes and it was just too good to pass up. Without our Lowrance HDS system no way would we have ever found his spot. Your system can get images like this too! Be the best angler you can be by learning to use your electronics to their full potential. For your personalized "On the water Sonar Class" contact Lowrance Pro Staffer Randy Kuhens at rk@kicknbass.net

Remember ... The first step in our "On the Water Sonar Class" is to perform an inspection of your system to make sure the installation has been done to factory specs and all components are installed in the proper location. If adjustments are needed we can have them made prior to beginning your class. Doing so assures you that your system will perform at a high level and you'll get the most out of your time on the water.

Here's what some of our clients are saying about Kick'n Bass' "On the Water" Sonar Class ...

Randy, I really enjoyed the class. I was pleasantly surprised how much the units can do. I feel like my electronics are now a useful tool. I'll recommend you class to my friends.

TK Mosely – Grenada, MS.

Randy, the class was just what I needed. I had my doubts that I was ever going to learn to use my system. I really appreciate you taking the time and being so patient with me. Now I feel like I can use them for much more than just a depth finder. Thanks for such an informative class.

Don Truax – Chicago, IL.

The "On the Water Sonar Class" is a one on one, hands on, in your boat using your electronics instruction that will take your understanding and know-how to another level. We get it and you will too!

Kick'n Bass' 7 Essential Steps to Simplify Using Your HDS System.

Kick'n Bass will perform the following ...

- 1. Complete a detailed inspection on your system to certify the installation has been done to factory specs. (If adjustments are required technicians are available to fine tune your system prior to beginning your class. Doing so assures you that your system will perform at an optimum level and you'll get the most out of your time on the water).**
- 2. Check all network settings for compatibility and make adjustments if needed.**
- 3. Program the individual screens and install the overlay data that is best suits the type fishing you do. Example: Depth, Water Temp, Time, etc. Eliminate unwanted, non-practical on screen clutter that hampers using your unit to its maximum potential.**
- 4. Arrange the screens so that going from page to page is orderly and non-confusing. You'll become familiar with the screens and commands and what they'll do for you.**
- 5. Dial in Sonar and Structure Scan Graphics and choose appropriate Palette for the lakes you fish.**

6. Demonstrate the art of waypoint management. No more cluttered maps with useless or unproductive waypoints. You'll learn to identify which locations are waypoint worthy and how to go back to those locations without ever assigning a waypoint. You'll assign a waypoint once you are satisfied the location is worth saving.
7. Demo the unit so you'll be able to take advantage of its fish finding capabilities. You'll learn to identify shell beds, submerged stumps, brush piles, ledges, game fish species and more.

As a bonus Kick'n Bass will help you learn to read an electronic topo map and find "places of interest" that could be potential fishing hot spots.

The Best Bow Mount Sonar Bracket Ever Works on Virtually all boats ...

Keeps your Sonar Unit Secure Too!



Works Great and keeps Sonar secure! (Photo) Note the locking mechanisms on the bracket. The Dura Safe E Locks replace the Gimbel Mount knobs and the two brackets are secured together with a Hardened Steel Master Padlock. Use Loctite 271 on the stainless steel bracket bolts and you're all set. The Mounting Bolts are safely attached thru hull requiring nefarious individuals to remove the bow panel and spend some serious time to remove the mounting bolts. Thieves are lazy. In other words trying to steal your unit would be way too much hassle and work so they move on.

Check out the product review on [Wired2fish.com](http://wired2fish.com)

<http://wired2fish.com/kickn-bass-sonar-bracket-review-p17741>

*** ANNOUNCEMENTS ***



**Covered Boat Slips Available at King Creek Resort
Call Jim at 270-493-0076**

Tourist Commission members receive honors ...



Congratulations to **Christina Onnybecker of Bee Spring Lodge** for receiving the Kentucky's Western Water land Homer Brown Member of the Year Award. The award is given to the individual that goes above and beyond to represents and promote the Lakes area.

Congrats to **Randy Newcomb**, Director of Kentucky Lake/Marshall County Tourism for receiving the Kentucky's Western Water land President's Award. Randy's leadership has proven invaluable in promoting tourism in the area and is well deserving of the award..