



To Book a trip call 270-703-6133 or visit our website

www.kicknbass.net

Feb. 28, 2013

Lake Conditions

Lake Levels ... As of this morning both lakes are approximately 2 feet above winter pool. Some gates are spilling at both Barkley & Kentucky creating significant current in the upper lake. For additional info, including generation schedule for Kentucky Lake, visit the TVA website:

http://www.tva.gov/lakes/kyh_r.htm

Water Clarity and Temperature ... Kentucky Lake ranges from stained in some of the creeks to the main lake dingy. Barkley is heavily stained in the creeks and bays and the main lake is stained. Surface water temps are in the 46 degree range. *Always wear your PFD and keep an extra change of clothes on board. Advise others of your fishing plans.*

Weather Outlook

Friday...Cloudy, a 40 percent chance of light snow. Highs in the upper 30s. NW winds 10 to 15 mph.

Friday Night...Cloudy, a 40 percent chance of light snow. Lows in the upper 20s. NW winds 10 mph.

Saturday...Mostly cloudy with a 20 percent chance of rain and snow. Highs in the upper 30s.

Saturday Night...Partly cloudy. Lows in the mid 20s.

Sunday...Mostly sunny. Highs in the upper 30s.

Sunday Night...Mostly clear. Lows in the mid 20s.

Monday...Partly sunny. Highs in the upper 40s.

Prime Feeding Times – Gilbertsville, KY 42044

Date	Temps	Sun Data	Moon Data	Moon Phase	Major Times	Minor Times	Prediction
Friday 3/1/13	H: 39° L: 32°	Rise: 6:23 AM Set: 5:47 PM	Rise: 10:12 PM Set: 8:17 AM Overhead: 2:45 AM Underfoot: 3:12 PM	83% Waning Gibbous	2:45 AM - 4:45 AM 3:12 PM - 5:12 PM	8:17 AM - 9:17 AM 10:12 PM - 11:12 PM	Average
Saturday 3/2/13	H: 37° L: 28°	Rise: 6:21 AM Set: 5:48 PM	Rise: 11:18 PM Set: 8:58 AM Overhead: 3:39 AM Underfoot: 4:06 PM	74% Waning Gibbous	3:39 AM - 5:39 AM 4:06 PM - 6:06 PM	8:58 AM - 9:58 AM 11:18 PM - 12:18 AM	Average
Sunday 3/3/13	H: 39° L: 25°	Rise: 6:20 AM Set: 5:49 PM	Rise: --- Set: 9:45 AM Overhead: 4:34 AM Underfoot: 5:03 PM	63% Waning Gibbous	4:34 AM - 6:34 AM 5:03 PM - 7:03 PM	--- 9:45 AM - 10:45 AM	Average
Monday 3/4/13	H: 46° L: 26°	Rise: 6:19 AM Set: 5:50 PM	Rise: 12:22 AM Set: 10:37 AM Overhead: 5:32 AM Underfoot: 6:01 PM	50% Last Quarter	5:32 AM - 7:32 AM 6:01 PM - 8:01 PM	12:22 AM - 1:22 AM 10:37 AM - 11:37 AM	Average

Fishing Report

Bass Fishing ... continues to defy Mother Nature. Good fishing is had by casting umbrella rigs and slow rolling medium running crank baits along long tapering points and chunk rock banks at the mouth of the bays. Add a little current and things get a little sweeter. The most consistent depths are 6-10 feet especially when the depths occur on the first break. However, with more inclement weather moving in and North winds cooling water temps you can expect that the fish will suspend somewhat and pull away from the bank. Pulling away from the bank means just that and not necessarily deeper. So if you don't get bit move out and fish S-L-O-W-E-R.

Crappie ... With the windy cold conditions this week a combination of Long Line trolling and spider rigging has been the most consistent methods to catch some fish. Capt. Rich in the Kick'n Bass Pontoon has caught some decent numbers fishing the flats using 1/16 oz jigs in Blue and Chartreuse or Electric Chicken. Crappie are also being caught vertically fishing with minnows over submerged cover in 20 feet plus depths. These are primarily White Crappie. A few Black Crappie were being caught casting the banks 6-8 feet deep but with the North Winds and falling temps those fish have backed off.

Tip ... When it's windy use drift socks they work like a charm. Use one and you'll need to angle your motor to stay straight. Use two and you'll be a happy angler.

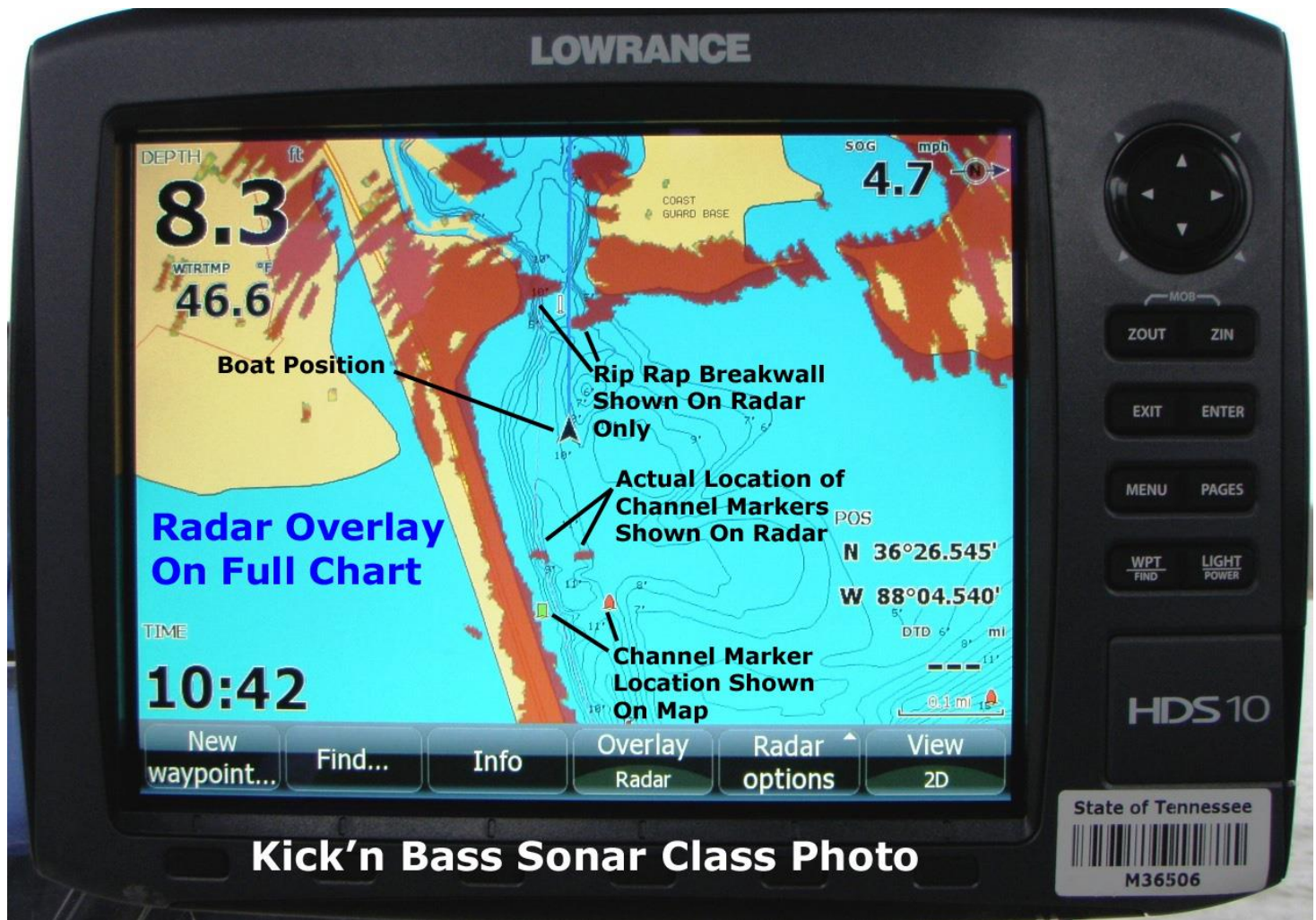
SONAR TIP OF THE WEEK ... What is RADAR?

Kick'n Bass Participates in Tennessee State Police Special Operations Training ...

Coordination and synchronization between special operations teams is crucial since they share integral roles within an area of responsibility, whether it involves intelligence gathering or conducting combat operations. Having the proper equipment and being trained to use it is crucial to the success of any mission.

The training event held on the Tennessee River in cold, wet and windy conditions included members of the Tennessee State Police Special Ops air, ground and dive team units as well as members of the Tennessee Wildlife Resources Agency. These Special Response teams spend many hours training and their level of preparedness is second to none. Kick'n Bass is honored to have had a small part in training these very special men. Also, a special thanks to Matt Quinn of Bass & Gas in Benton, KY and Lowrance Electronics for their technical support.





Kick'n Bass Sonar Class Photo

What is RADAR? RADAR is an object detection system which uses radio waves to determine the range, altitude, direction, or speed of objects. RADAR's two-dimension visual representation aids in locating landmarks and other boats during times of limited visibility. This screen shot was taken during our on the water sonar training with members of the Special Operations Teams from the Tennessee State Police and the Tennessee Wildlife Resources Agency. As you can see things aren't always as they appear on the map. Note the location of the channel markers vs. their actual position painted by RADAR. The break walls at the entrance of the Paris Landing marina aren't shown on the map, yet RADAR clearly displays their image and location. The Chart Screen with RADAR Overlay can show you where you are, where you are going, and how to get there and will keep you from getting lost no matter what.

You've made a Significant Investment in Electronics. Be the best angler you can be by learning to use your electronics to their full potential. For your personalized "On the water Sonar Class" contact Lowrance Pro Staffer Randy Kuhens at rk@kicknbass.net

Here's what some of our clients are saying about Kick'n Bass' "On the Water" Sonar Class ...

*Randy, Just wanted to say thank you again. The professionalism, knowledge and patience's that you have is unmatched. My Dad was even impressed with the class and he's an 80 year old grumpy old man. The fact that you didn't mind or let my autistic son bother you was a true blessing. Most people don't know how to take him and you never even batted an eye. I was impressed with the subject matter and you made sure that it was understood and I was able to do it. Your class was well worth the investment. Thank you again, I can't say that enough. You made the cost of the unit worth it
Jacob Scepurek - Illinois*

Randy, Just wanted to let you know that the sonar class was a great experience and I became a better fisherman without ever touching a fishing pole. I went in to the class thinking I would have to spend a lot of hours on the water to fully understand how to work the electronics. With the program you have created, understanding my HDS 7 Touch couldn't have been any easier! Lowrance owners, you would be foolish not to take this class. Special thanks to Nick and Matt at Bass & Gas for a great installation.
Matt Baker – Hopkinsville, Ky

Remember ... The first step in our "On the Water Sonar Class" is to perform an inspection of your system to make sure the installation has been done to factory specs and all components are installed in the proper location. If adjustments are needed we can have them made prior to beginning your class. Doing so assures you that your system will perform at a high level and you'll get the most out of your time on the water.

The "On the Water Sonar Class" is a one on one, hands on, in your boat using your electronics instruction that will take your understanding and know-how to another level. We get it and you will too!

Kick'n Bass' 7 Essential Steps to Simplify Using Your HDS System.

Kick'n Bass will perform the following ...

- 1. Complete a detailed inspection on your system to certify the installation has been done to factory specs. (If adjustments are required technicians are available to fine tune your system prior to beginning your class. Doing so assures you that your system will perform at an optimum level and you'll get the most out of your time on the water).**
- 2. Check all network settings for compatibility and make adjustments if needed.**
- 3. Program the individual screens and install the overlay data that is best suits the type fishing you do. Example: Depth, Water Temp, Time, etc. Eliminate unwanted, non-practical on screen clutter that hampers using your unit to its maximum potential.**
- 4. Arrange the screens so that going from page to page is orderly and non-confusing. You'll become familiar with the screens and commands and what they'll do for you.**
- 5. Dial in Sonar and Structure Scan Graphics and choose appropriate Palette for the lakes you fish.**
- 6. Demonstrate the art of waypoint management. No more cluttered maps with useless or unproductive waypoints. You'll learn to identify which locations are waypoint worthy and how to go back to those locations without ever assigning a waypoint. You'll assign a waypoint once you are satisfied the location is worth saving.**
- 7. Demo the unit so you'll be able to take advantage of its fish finding capabilities. You'll learn to identify shell beds, submerged stumps, brush piles, ledges, game fish species and more.**

As a bonus Kick'n Bass will help you learn to read an electronic topo map and find "places of interest" that could be potential fishing hot spots.

The Best Bow Mount Sonar Bracket Ever! Works on Virtually all Boats ...



**Check out the product review on [Wired2fish.com](http://wired2fish.com)
<http://wired2fish.com/kickn-bass-sonar-bracket-review-p17741>**

Don't Forget ... Kick'n Bass Offers Pontoon Fishing

Check out the pontoon video <http://www.youtube.com/watch?v=DIjrXQe4FfI>



Don't be disappointed Book NOW and get the dates you want!