



To Book a trip call 270-703-6133 or visit our website
www.kicknbass.net

Jan. 31, 2013

Lake Conditions

Lake Levels ... As of this morning both lakes are approximately 1/2 foot above winter pool. The gates are spilling at both Barkley & Kentucky creating significant current in the upper lake. For additional info, including generation schedule for Kentucky Lake, visit the TVA website:
http://www.tva.gov/lakes/kyh_r.htm

Water Clarity and Temperature ... Kentucky Lake ranges from heavy stain in some of the creeks to the main lake dingy. Barkley is heavily stained to muddy in the creeks and bays and the main lake is dingy to muddy. Surface water temps on both lakes are in the mid 40's. Always wear your PFD and keep an extra change of clothes on board. Advise others of your fishing plans.

Weather Outlook

Friday... Mostly sunny. Highs in the upper 20s. West winds 5 to 10 mph.

Friday Night... Partly cloudy in the evening...Then mostly cloudy with a 20 percent chance of snow after midnight. Lows in the mid 20s. South winds 5 to 10 mph.

Saturday... Partly sunny. A chance of snow in the morning...Then scattered flurries or patchy drizzle in the afternoon. Highs in the mid 40s. Southwest winds 10 to 15 mph. Chance of precipitation 30 percent.

Saturday Night... Mostly clear. Lows around 30.

Sunday... Mostly sunny. Highs in the upper 40s.

Sunday Night... Partly cloudy. Lows around 30.

Monday... Partly cloudy. Highs in the mid 50s. Lows in the mid 30s.

Monday Night... Partly cloudy. Highs in the mid 50s. Lows in the mid 30s.

Prime Feeding Times – Gilbertsville, KY 42044

Date	Temps	Sun Data	Moon Data	Moon Phase	Major Times	Minor Times	Prediction
Friday 2/1/13	H: 30° L: 16°	Rise: 6:54 AM Set: 5:18 PM	Rise: 11:14 PM Set: 9:38 AM Overhead: 3:58 AM Underfoot: 4:23 PM	70% Waning Gibbous	3:58 AM - 5:58 AM 4:23 PM - 6:23 PM	9:38 AM - 10:38 AM 11:14 PM - 12:14 AM	Average
Saturday 2/2/13	H: 44° L: 24°	Rise: 6:54 AM Set: 5:19 PM	Rise: --:-- Set: 10:15 AM Overhead: 4:48 AM Underfoot: 5:15 PM	59% Waning Gibbous	4:48 AM - 6:48 AM 5:15 PM - 7:15 PM	--:-- - --:-- 10:15 AM - 11:15 AM	Average
Sunday 2/3/13	H: 49° L: 29°	Rise: 6:53 AM Set: 5:20 PM	Rise: 12:19 AM Set: 10:58 AM Overhead: 5:42 AM	50% Last	5:42 AM - 7:42 AM 6:09 PM - 8:09 PM	12:19 AM - 1:19 AM 10:58 AM - 11:58 AM	Average+

			Underfoot: 6:09 PM	Quarter			
Monday 2/4/13	H: 52° L: 32°	Rise: 6:52 AM Set: 5:21 PM	Rise: 1:25 AM Set: 11:46 AM Overhead: 6:38 AM Underfoot: 7:07 PM	37% Waning Crescent	6:38 AM - 8:38 AM 7:07 PM - 9:07 PM	1:25 AM - 2:25 AM 11:46 AM - 12:46 PM	Average

Kick'n Bass at the Southern Illinois Boat Show this weekend. Admission is FREE to the public



Come talk Fish'in and High Definition Electronics with Kick'n Bass

The sixth annual Southern Illinois Boat and Fishing Show will fill the ***Pavilion of the City of Marion*** this weekend. ***There is no admission or parking fees. Boats, Tackle, Fishing Seminars & More!***

Kick'n Bass will have a booth at the show featuring a KY Lake Slide Show presentation with photos from our 2012 fishing trips including photos from our extremely popular *Pontoon Fishing Adventures*. Also *Kick'n Bass* will have a Slide Show Presentation

consisting of screen shots from our extremely popular High Definition "On the Water Sonar Class" so you can really see what's down there!

View actual client photos like the one above taken during our "On the Water" Sonar class! These photos are actual screen shots displayed electronically in high definition on a flat screen monitor complete with text defining structure, fish holding cover, baitfish and even your favorite game fish. Come, let's talk!

Show Times

Friday- 4 to 7 pm

Saturday - 9 am -6 pm

Sunday - 10 am - 3 pm.

Don't wait to book your trip ... book right away so you'll get the dates you want!

Fishing Report

Been at the boat shows and doing "On the Water" Sonar Classes this week and didn't get a chance to wet a line. Will be on the water full time next week so stay tuned ...

The Best Bow Mount Sonar Bracket Ever!



Check out the review on
Wired2fish.com

<http://wired2fish.com/kickn-bass-sonar-bracket-review-p17741>

**Don't Forget ... Kick'n Bass Offers
Pontoon Fishing**

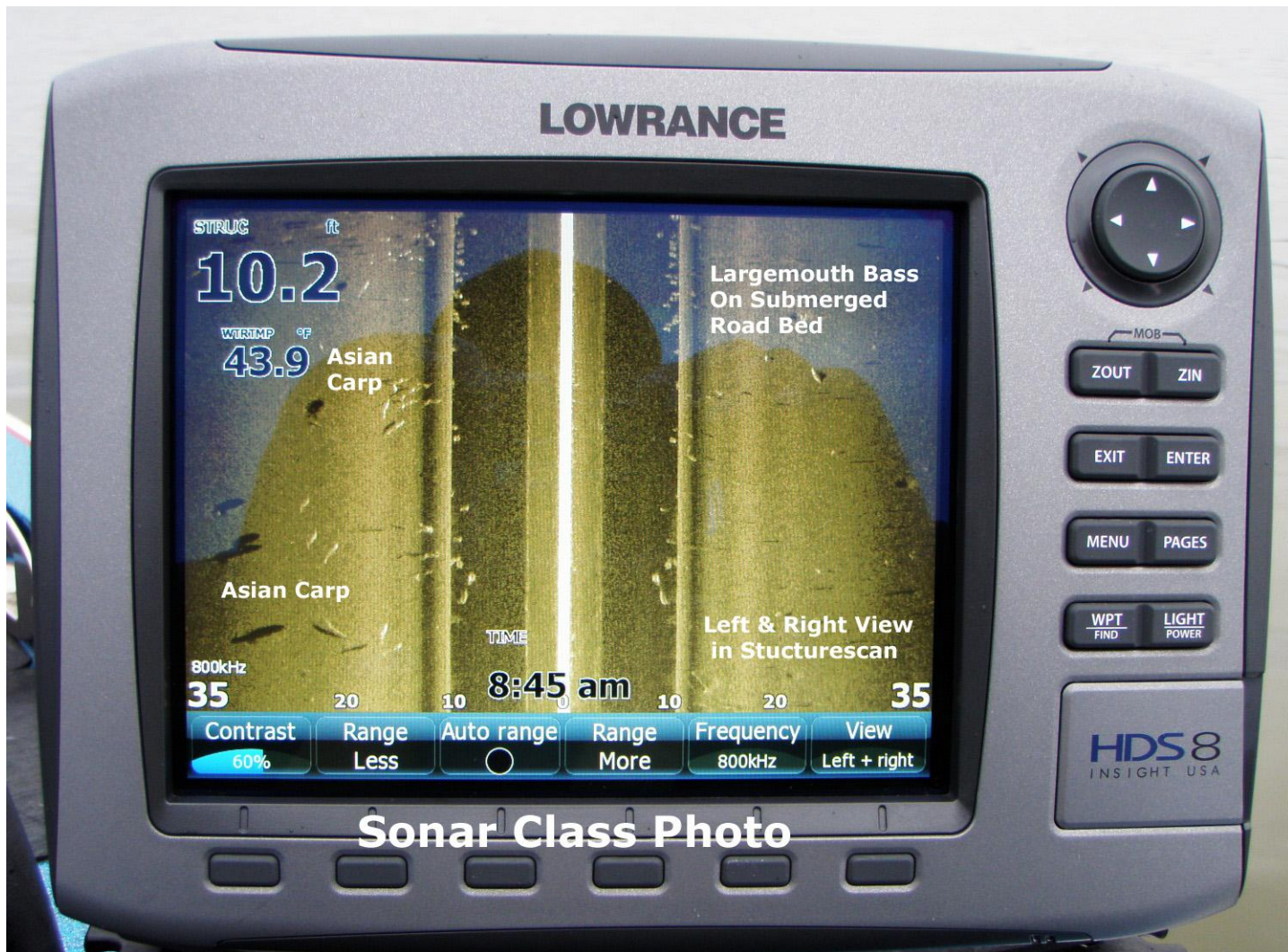
Don't be disappointed Book NOW and get the dates you want!

Check out the pontoon video <http://www.youtube.com/watch?v=DIjrXQe4FfI>



Catch Fish and Have Fun on the Kick'n Bass Pontoon!

SONAR TIP OF THE WEEK ...



Side scan is a very important tool when you want to find fish and find them fast. This screen shot was taken this week during an "On the Water Sonar Class with Larry Chatman of Clarksville, Tn. Larry not only identified the bass on the old road bed but successfully marked their location and positioned the boat within easy casting distance of the school. Larry passed the class with flying colors! You've made a Significant Investment in Electronics. Be the best angler you can be by learning to use your electronics to their full potential. For your personalized "On the water Sonar Class" contact Lowrance Pro Staffer Randy Kuhens at rk@kicknbass.net

Remember ... The first step in our "On the Water Sonar Class" is to perform an inspection of your system to make sure the installation has been done to factory specs and all components are installed in the proper location. If adjustments are needed we can have them made prior to beginning your class. Doing so assures you that your system will perform at a high level and you'll get the most out of your time on the water.

Here's what some of our clients are saying about Kick'n Bass' "On the Water" Sonar Class ...

Randy, After your class I spent two days putting into practice what I learned and I not only found fish I caught my biggest smallmouth bass ever ... a 6 pounder! No way would I have caught that fish before taking the class. The "On the Water Sonar Class" has taken my fishing to another level. Thanks for being patient and thorough.

Carl Campise – Clarksville, TN.

The "On the Water Sonar Class" is a one on one, hands on, in your boat using your electronics instruction that will take your understanding and know-how to another level. We get it and you will too!

Kick'n Bass' 7 Essential Steps to Simplify Using Your HDS System.

Kick'n Bass will perform the following ...

- 1. Complete a detailed inspection on your system to certify the installation has been done to factory specs. (If adjustments are required technicians are available to fine tune your system prior to beginning your class. Doing so assures you that your system will perform at an optimum level and you'll get the most out of your time on the water).**
- 2. Check all network settings for compatibility and make adjustments if needed.**
- 3. Program the individual screens and install the overlay data that is best suits the type fishing you do. Example: Depth, Water Temp, Time, etc. Eliminate unwanted, non-practical on screen clutter that hampers using your unit to its maximum potential.**
- 4. Arrange the screens so that going from page to page is orderly and non-confusing. You'll become familiar with the screens and commands and what they'll do for you.**
- 5. Dial in Sonar and Structure Scan Graphics and choose appropriate Palette for the lakes you fish.**
- 6. Demonstrate the art of waypoint management. No more cluttered maps with useless or unproductive waypoints. You'll learn to identify which locations are waypoint worthy and how to go back to those locations without ever assigning a waypoint. You'll assign a waypoint once you are satisfied the location is worth saving.**
- 7. Demo the unit so you'll be able to take advantage of its fish finding capabilities. You'll learn to identify shell beds, submerged stumps, brush piles, ledges, game fish species and more.**

As a bonus Kick'n Bass will help you learn to read an electronic topo map and find "places of interest" that could be potential fishing hot spots.

