



**To Book a trip call 270-703-6133 or visit our website**  
[www.kicknbass.net](http://www.kicknbass.net)

**Nov. 21<sup>st</sup>, 2012**

## **Lake Conditions**

**Lake Levels ...** As of this morning both lakes are sitting about 2 feet above winter pool. For additional info, including generation schedule for Kentucky Lake, visit the TVA website:  
[http://www.tva.gov/lakes/kyh\\_r.htm](http://www.tva.gov/lakes/kyh_r.htm)

**Water Clarity and Temperature ...** on Kentucky Lake ranges from light stain in some of the creeks with the main lake clear. The lake is very fishable. Barkley is lightly stained and the lake is very fishable. Surface water temps on both lakes are in the low to mid 50's.

## **Weather Outlook –**

**Thanksgiving Day...** Mostly sunny. Highs in the mid 60s. South winds 5 to 10 mph.

**Thursday Night...** Mostly cloudy with a 30 percent chance of showers. Lows in the upper 40s.

**Friday...** Mostly sunny with a 30 percent chance of showers. Highs in the upper 50s.

**Friday Night...** Mostly clear. Lows in the lower 30s.

**Saturday...** Mostly clear. Highs in the mid 40s. Lows around 30.

**Saturday Night...** Mostly clear. Highs in the mid 40s. Lows around 30.

**Sunday...** Mostly sunny. Highs in the lower 50s.

**Sunday Night...** Partly cloudy with a 20 percent chance of rain showers. Lows in the upper 30s.

**Monday...** Mostly cloudy with a 40 percent chance of rain showers. Highs in the mid 50s.



**Who said Girls Can't Fish!** Congratulations to Paula Farrar from Nashville, Tn. (Photo) who caught her first fish EVER fishing with Kick'n Bass Guide Service. Special thanks to her husband Bob, who set the trip up and was a real good sport in letting his wife out fish him. LOL!

## **Fishing Patterns ...**

**Bass Fishing ...** Pretty much like it was last week. Overall pretty tough but we're still catching a fair number of fish. We've really had to work hard for them, especially good ones

**Blade Bait Pattern ...** We're still finding schools of bass suspended and feeding on baitfish. Once we can get on them we're finding that these bass are somewhat stubborn but they will bite. What has worked for us is the yoyo retrieve on a tight line. Bringing the lure off the bottom about a foot or less and let it fall S-L-O-W-L-Y on a tight line. This allows the lure to drop gently giving the bass a real good look at it. Sometimes the sheer weight of the lure on a free fall drops too fast and the

fish can't catch up to it, especially if the bite is waning. Also, ripping it off the bottom is not necessarily the right thing to do at this time of year. More strikes come on a gentle lift. With the scores of bait fish on the flats and bays it's difficult to compete with mother nature but the Blade Bait hangs in there better than anything else we've used all year when it comes to fishing the shad. Our No.1 bait is the Steel Shad in any color but Crawfish Red. **Back Bay Pattern ...** We've caught a few bass shallow in the very backs of the bays on flats on lipless crank baits and Steel Shads and on wood cover with spinner baits. On calm mornings there is a fair shallow water bite along gravel banks and in the back of the bays. A spinner bait slow-rolled shallow along gravel banks has accounted for several nice fish this week too. **Ledge Fishing** has been either feast or famine but when we did catch bass on the ledges they were usually keepers. Best baits were the Steel Shad Blade Bait, a Shakey Head and a 1/2 oz. jig.

The best way to describe bass fishing is, it's still unpredictable and no one pattern seems to be a sure thing. Remember don't be stubborn this time of year, be prepared to move around and try different lures and methods and you'll probably catch more fish and ... fish S-L-O-W.

## ***"Don't Wait" ... Book your spring Crappie trip NOW!***



### **Crappie Fishing ...**

Keeper fish has been the norm and that is not only a good sign now but an even better one for this upcoming spring crappie season. This week our numbers varied quite a bit. One day we'll catch them pretty good and other days we struggle. *(Photo) Joe Compton, Danny Zoeller & Butch Compton from Louisville with some nice crappie caught Long Line Trolling from the Kick'n Bass Pontoon.* Deeper cover has yielded us our best success as these fish were less affected by the November frontal

passages. The best depths for big fish have been 17-20 feet over submerged cover. The most productive means was to back off and cast 3/32 oz. KY Green or Blue Pearl curly tails, count them down and swim them slowly thru the brush. Plan "B" was to tight line minnows and let them soak around the submerged cover. The key of course was using High Definition electronics to find the places that were holding good numbers of fish *(See Sonar Tip of the Week)*. Overall I'd say that Crappie fishing has been fair but unpredictable.

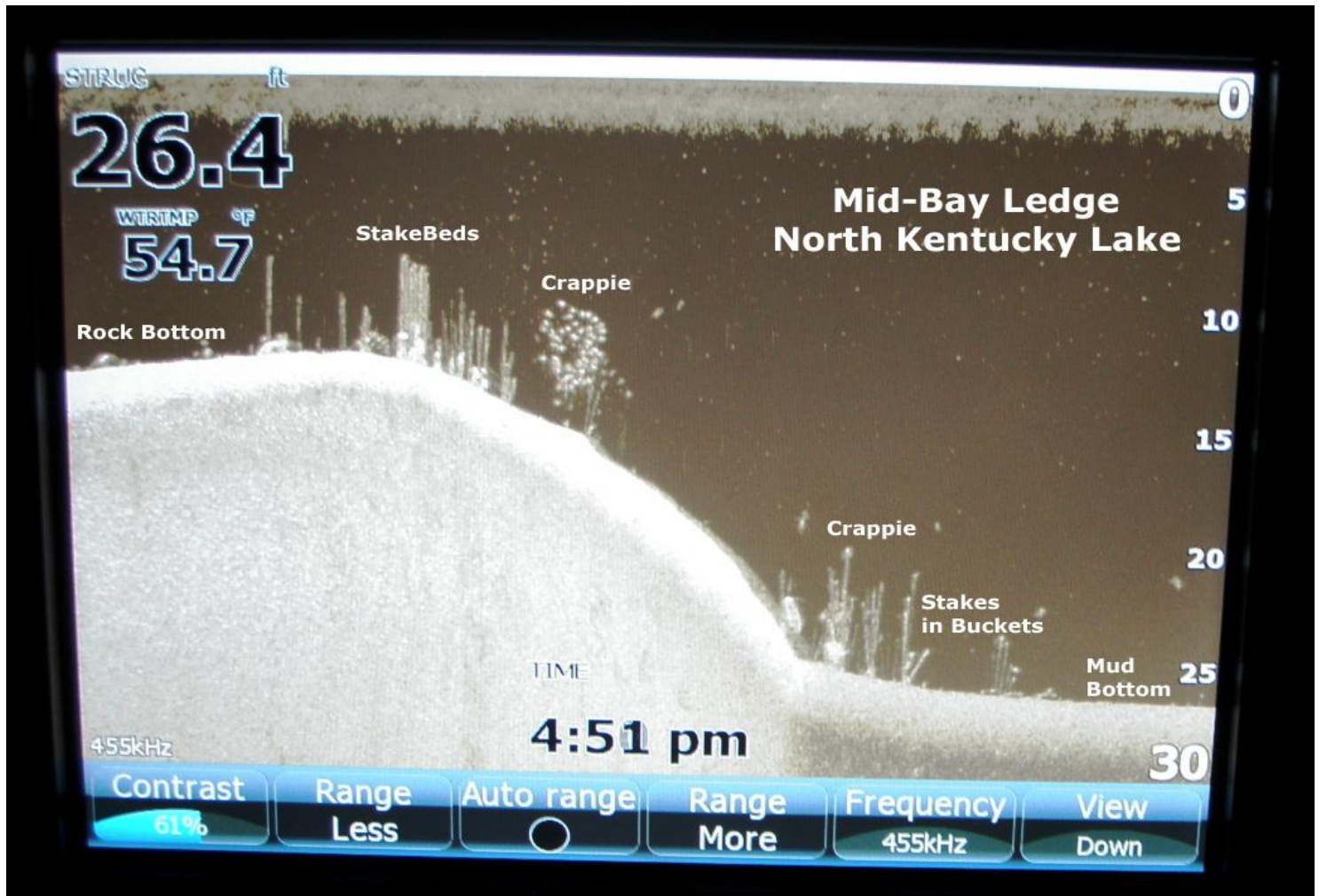
## **The Right Crappie Hook Can Make a BIG Difference!**

When the water on Kentucky Lake has had a lot more color to it spider rigging or vertically fishing over cover is a pretty good way to catch a nice mess of fall crappie. However, with the unusually clear water we've had this fall, getting up close and personal with crappie has been difficult at times for us anglers. In order to improve our catch we've adjusted our presentation in a couple of ways. This includes backing off the cover and casting curly tails mounted on lead heads with light wire hooks and using braided line with a fluorocarbon leader. Using the light wire hooks has allowed my clients and me to keep the lures in and around the cover where the big slabs have been hiding. The big advantage of light wire hooks is the angler can fish lures close to the cover without the fear of getting hung up. Having the right line is essential. We use 10 lb yellow Power Pro braid as a main line and add an 8 pound fluorocarbon leader on the business end. This set up offers several advantages to the angler; superior casting, unbelievable feel for those light biters, strength and durability. In the event one of us gets hung in the brush, all it takes is a gentle steady pull on the line and the Light Wire hook will bend and come free. Countless times we've done this and saved a retie and precious fishing time. Also when you get hung and get free it's one of the best times to get bit. Once the lure comes out, reel very slowly. Some of our best fish have been caught as the lure pops free from the submerged cover. No doubt Light Wire hooks are the way to go. Remember a S-L-O-W retrieve works best when fishing deep brush piles.



By the way get you some of light wire lead heads from Ken McGregor at the **Fisherman's Friend in Lake City (270) 362-4323**. You'll get unhung and retie less when you're swimming those curly tails thru the submerged cover.

## **SONAR TIP OF THE WEEK**



*Talk about fish habitat ... note the placement of the stake beds on top of the ledge and the buckets positioned at the base of the drop. This area can support schools of game fish no matter what the weather or lake conditions. During warm, calm and overcast conditions like we had the day we fished this location, the fish were on top. During a weather change or cold front most likely you'd find game fish positioned at the base of the drop near the buckets. This photo was taken right at sunset and as you might have guessed the fish bit right before dark. The image quality on our Lowrance Structurescan helped us identify the man-made cover and the location of the fish. Without the help of our HDS System no way would we have been able to find this sweet spot.*

*Your system can produce images like this too. Participate in Kick'n Bass "On the Water" sonar class and you'll learn to use modern technology to find fishing hotspots like this.*

*You've made a Significant Investment in Electronics. Be the best angler you can be by learning to use your electronics to their full potential. For your "On the water Sonar Class" contact Lowrance Pro Staffer Randy Kuhens at [rk@kicknbass.net](mailto:rk@kicknbass.net)*

## **Here's what some of our clients are saying about Kick'n Bass' "On the Water" Sonar Class ...**

*Randy, I have to give you a ton of thanks. With all the problems I had, including my new Lowrance unit, not being mounted correctly from a "so called professional. The way you and the folks at Bass & Gas bent over backwards to help me out sure says a lot about your commitment to customer satisfaction.*

*Your sonar class is the only way to go. I hear so many people that have sonar units say that they like them but can't operate it and never get the full advantage of it. Your class makes it so easy to use and get the full benefit of it. I spent the first 2 days after your class just riding around and looking. I would and will recommend your class to all. Thanks again*

*Matt Baker - Clarksville, TN.*

**Kick'n Bass offers a one on one, hands on, in your boat using your electronics class that will take your understanding and know-how to another level!  
IF YOU'RE **CONFUSED, FRUSTRATED, AND NEED ANSWERS** then Kick'n Bass' "On the Water Sonar Class" is for YOU!**

**Here's just some of what Kick'n Bass can do for YOU!**

- **Make sure your HDS unit(s) has the correct settings for the type of fishing you do.**
- **Program the individual screens and install the overlay data on the screen that you want. Example: Depth, Water Temp, Time, etc.**
- **Arrange the screens so they display what you want them to show and make going from page to page orderly and non-confusing.**
- **Eliminate unwanted, non-practical on screen data that clutters your screen and gets in the way of using your unit to its maximum potential.**
- **Learn the art of waypoint management. No more cluttered maps with useless or unproductive waypoints. You'll learn how to identify which locations are waypoint worthy and how to go back to those locations without ever assigning a waypoint. You'll learn to only assign a waypoint once you are satisfied the location is worth saving.**
- **Demo the unit for you to help you be familiar with the screens and commands, so you'll have a good understanding of how to use the unit and take advantage of its fish finding capabilities.**

**As a bonus Kick'n Bass will help you learn to read an electronic topo map and find "places of interest" that could be potential fishing hot spots.**

**WOW! Check out the video on the New Bow Mount Sonar Bracket ...** <http://www.youtube.com/watch?v=BoLvui9b91Q&feature=relmfu>



## ***Shimano Introduces a High Value Low Cost Umbrella Rig Rod***



The NEW Crucial "Umbrella Rig" rod (# CRCU79HA 7'9" Hvy) is a technique specific model for fishing the Alabama Rig. This blank is built out of IM-10 carbon to perfectly cast this awkward lure. Shimano put an extra fast tip design into the action for greater hook setting power. 2 more inches of grip has been added in the rear of the rod to give the angler better support while casting. The suggested retail is \$169.99 with an over the counter limited lifetime warranty.



**A Special Thanks to all our customers. We appreciate each and every one of you and we look forward to fishing with you again!**

*Capt. Randy Kuhens & Capt. Rich Bay  
Kick'n Bass Guide Service*

