



To Book a trip call 270-703-6133 or visit our website [www.kicknbass.net](http://www.kicknbass.net)

## November 11<sup>th</sup>, 2011

### Lake Conditions

**Lake Levels ...** As of this morning both lakes are holding steady at winter pool give or take a few inches.

**Boaters –** Be aware of the depth you are running in at all times and use the channel markers to navigate as both lakes are approximately 4' below their summer pool levels.

**Water Conditions ...** The water on both Lakes is in great shape for fishing.

**Water Temps ...** Surface temps on both lakes are in the mid 50's in the morning and warming to the low 60's in the afternoon on the unseasonably warm sunny days.

**November Open Dates ...** I have a day or two still open in November so let's fine tune your electronics or go fishing or both. Give me a call (270)703-6133 or send me an email: [rk@kicknbass.net](mailto:rk@kicknbass.net) to book a trip.

### Fishing Report



**Bass Fishing ...** Overall bass fishing is inconsistently good. What I mean by that is there are days when we can't do any wrong and other days we struggle somewhat but as a whole my clients and I can't complain too much! The shallow water bite is still fair to good on spinner baits, jerk baits and Steel Shad blade baits. Some productive areas are chunk rock banks and flats mid way in the bays. We've seen some bass busting shad when it's calm in the back of the bays but the biggest concentration of catchable fish seem to be at the mouth of the bays. The bass we've caught are lighter in color which tells me they are coming in from deeper parts of the lake. Some decent Smallmouth are showing up too. *(Photo - Steve Vogts and Dr. Steve Bumb of Murray, KY with some really nice Smallmouth)* Our Shakey Head bite has returned and the **PJ's / ZMAN** combo is hot again. A

**Steel Shad** blade bait and the multi bait rigs like the **Ken's Babrella Rig** are good backup plans. It seems that if the bass are suspended they prefer these type of baits.



**Boat Dock Pattern ...** for those of you that follow my reports you may remember about this time last year we were catching a lot of bass around boat docks. With the fluctuation in weather and wind conditions we're having, the shad like to huddle up around and under boat docks. The best docks are the ones located in deeper water with spud poles. Spud poles, located on the corner of the docks, are driven into the bottom of the lake to help secure the dock. Baitfish like to eat the algae on the spud poles and the bass know that. One lure combination in particular that has been working for us is adding a **ZMAN 3" MinnowZ** swim bait to a **Buckeye Lures Su-Spin** bladed jig head. The **MinnowZ** have a nice square tail which gives off a lot of movement even under a slow retrieve and the **Su-Spin** has an under the head spinner bait shaft with two small willow leaf blades. There's a lot

of good going on with this bait and working it slowly around the docks has been pretty effective. When the bite slows, we've pitched a **Ken's 4" Blue Pearl curly tail grub** on a 2/0 wide gap hook fished Texas Rig style with a 1/16 oz slip sinker. We peg the weight and fish it on spinning gear and 6 lb line. The bass seem to like the slow fall of the 1/16 oz version as it spirals downward. When fishing this way be a line watcher since a lot of the pickups are very subtle. Some nice keeper bass were caught this way. Most of the tackle shops in the Lakes area carry the Ken's Blue Pearl grub but if they're out you can call *The Fisherman's Friend in Lake City at (270)363-4323*.

**Ledge Fishing ...** if you find a ledge with some fish on it they're usually pretty cooperative. Best areas seem to be 12-13 feet deep where the ledge transitions into deeper water. Secondary channel drops near the mouth of the bays are areas of opportunity right now. Most productive baits were a mixture of a *Steel Shad blade bait, a ZMan Shakey Head and a ZMan Scented PaddlerZ Swim Bait*.

**Top Water ...** is feast or famine with the Best action occurring during reasonably calm conditions in the very early morning or late evening hours along chunk rock banks and in the very back of the bays. The most productive bait has been the **SPRO McStick**. We're Jerk Baiting the **SPRO McStick** with a jerk; jerk & pause retrieve to catch a few fish. A Super Spook is a distant second.

**Night Fishing ...** We fished the full of the moon on Tuesday and Wednesday nights and it was a great time to be on the water with non-stop action for most of the time. While we caught a few fish in the 4 pound range it was the numbers of keeper fish in the 16 inch range that kept things interesting ... so much so we braved the windy conditions and some rain to stay out Tuesday. Wednesday evening the wind subsided and it was crisp and clear and a good night for bass fishing also. Right now fishing is prime and overall the bite is much better at night than during the day. If you want to do a **NIGHT FISHING** trip let me know. Just so you'll know my Ranger is set up for guiding at night with LED deck lighting from *West Kentucky LED* so we're good to go. No stepping on rods, stumbling in the dark, etc. A safe trip is a good trip.



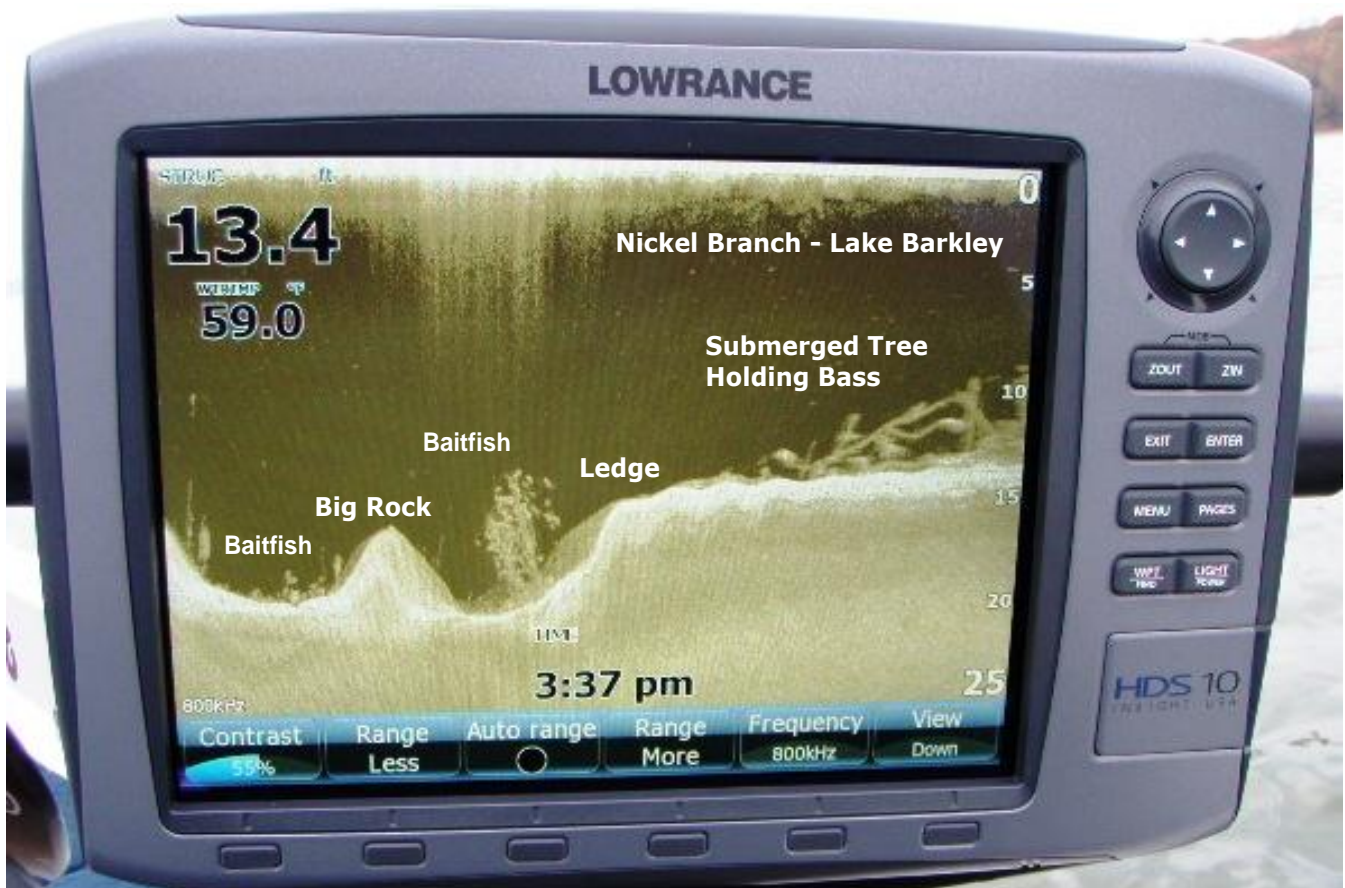
**Crappie ...** while we didn't get to fish for crappie as much as I like to but when we did it was pretty decent. We're catching a lot of crappie over brush about 10 feet deep with minnows on a slip bobber

rig or casting 3/32 oz KY Green or Blue Pearl curly tails. A large number of non-keeper 8-9 inch fish are being caught right now. If your patient and work thru the little ones by the end of the day you'll be rewarded with a decent amount of quality fish in the pound to a pound a half range. I witnessed several other boats in various parts of the lake catching crappie so the bite is definitely on. *(Photo- me and my good friend Sue Casper from Indiana with some nice ones)*

**White and Yellow Bass (Stripes)** Both species are in the bays, on main lake flats and secondary channel flats chasing baitfish. While we weren't focusing on these species we caught some really nice fish this week when bass fishing. Casting a **Steel Shad** or a **Ken's Hybrid Spinner** are the two best baits for this type of fishing.

**Catfish, Bluegill & Redear ...** We didn't fish for these species this week therefore there is no report.

## Sonar Tip of the Week



The screen shows a ledge at the mouth of the bay with a submerged tree and a saddle with a Big Rock in the middle making it a real "sweet spot". At low light the Largemouth Bass were positioned tight to the cover on top of the ledge. As the sun



came up the bass went deeper and re-positioned around the Big Rock in the middle of the saddle. Our HDS 10 not only located these fish but gave us an idea of how deep to fish and what we needed to use to catch them. Most of our fish were caught on Shakey Heads. Without the aid of our electronics, locating a "sweet spot" like this wouldn't have been possible.

## **Attention: High Definition System Owners CONFUSED! FRUSTRATED! NEED ANSWERS? KICK'N BASS CAN HELP!**

**Read the owner's manual or watched a DVD and still baffled? Let's clear up your Sonar confusion. Have your unit(s) programmed by someone who depends on the HDS technology daily. Together we can make your system more user friendly and help you become a better angler.**

### **Here's just some of what Kick'n Bass can do for YOU!**

- If needed, install the most recent updates.
- Make sure your HDS unit(s) has the correct settings for the type of fishing YOU do. In most cases the units factory default setting is set for "general use" not specific.
- Program the individual screens and overlay the data on the screen that you want. Example: Depth, Water Temp, Time, Voltage, etc.
- Arrange the screens in order how you would use them and make going from page to page orderly and non-confusing.
- Eliminate unwanted, non-practical on screen data that clutters your screen and gets in the way of using your unit to its maximum potential.
- Demo the unit for you to help you be familiar with the screens and commands, so you'll have a good understanding of how to use the unit and take advantage of its fish finding capabilities.

As a bonus Kick'n Bass will help you learn to read an electronic topo map and find "places of interest" that could be potential fishing hot spots.

**You've Made a Significant Investment in Electronics  
Learn to Use Them to Their Full Potential.  
Kick'n Bass Can Help ... Call Now! (270)703-6133**

### **Video Fishing Tip of the week**

To view the Kick'n Bass Video Fishing Tip if the week  
Click on this link <http://www.kicknbass.net/video.htm>

**Thanks for reading Kick'n Bass' fishing report!**

**Tight Lines ...**

*Randy Kuhens*