



Call 270-703-6133 or visit our website www.kicknbass.net

April 22nd, 2011

Lake Conditions ... Currently both lakes are right at summer pool and in the midst of a very slow rise. With more water coming in than normal and the Dams spilling water, there is significant current. On Kentucky Lake the creeks and bays have a little color to them while the main lake itself is slightly stained. The majority of the lake has what I would consider ideal fishing water. On Lake Barkley the main lake and some of the bays with large tributaries are stained. However bays with smaller creeks running into them, especially on the LBL side have some good water for fishing. The surface water temps on Barkley are in the low to mid 60's and temps on Kentucky Lake have risen to the mid to upper 60's. Remember, with fronts coming and going the water temps can fluctuating up and down.

Fishing Report

Bass Fishing ...



Dr. John Trost and his son Alex (*Photo*) and I had two days of memorable bass fishing this week. The first day was heavy on numbers of bass and somewhat light on quality fish but the next morning, after overnight severe storms had pounded the lakes area, proved to be a day the three of us will remember. The pre-spawn females were staging on chunk rock points and bit for hours and we had a blast. These two guys could really fish and at times I felt like I was only there as a net man. I think Dr. John and Alex found a new way to catch bass ... fishing Shakey Heads with **Z-Man** Watermelon and

Green Pumpkin finesse worms on a **PJ's 3/16 oz bass extractor jig head.**

Congratulations guys on two days of great fishing, especially under challenging weather conditions.

Largemouth bass are in transition. A few are locked on beds and preparing to spawn, others are on the way to the spawning flats and are running the creek channels along chunk rock banks in the bays and some are making a move from deep water and are congregating around main lake points at the entrance of the bays. These bass holding locations seem to be pretty consistent most everywhere on the lake. I will say that the fish on the west side of the lake seem to be a few days ahead of those on the east side. This is most likely due to a difference in water temp due to the sun shining on the west banks from an eastern sunrise.

One location in particular that has produced good numbers of bass for my clients this week is a mini-flat. A mini-flat is an area where a creek channel swings back and forth from the bank forming an underwater flat. Shakey Heads with **Z-Man** Watermelon and Green Pumpkin finesse worms on a **PJ's 3/16 oz bass extractor jig head** has produced a lot of bass this week on these areas. Some other methods and lures are catching a few; Shallow running crank baits in either a shad or crawfish pattern with a slow retrieve has caught a few fish along gravel banks mid-way in the bays and a 3/8 PJ's jig with a Tiny Paca Craw trailer has been a pretty good back up plan. Jerk baits are catch fish also.

Smallmouth Bass are being taken on main lake gravel banks and on secondary points in the bays. Some of the smallmouth we've caught are post-spawn. Overall the bite has been good. Best lures have been ZMan finesse worms in Green Pumpkin fished Shakey Head style & Tiny Paca Craws in Alabama Craw and Green Pumpkin & Candy. Both plastics are fished on a PJ's 3/16 Bass Extractor Jig. Best results came when the lure was dragged slowly on the bottom.

As you can see the bass are spread out somewhat and several presentations are productive. We've put in a lot of hours on the water and I'd have to say that bass fishing has been very good. It's important to remember you must be willing to try different locations, get in tune with the transition and please practice Catch, Photo and Release.

Crappie Fishing ...

While conditions vary according to which part of the lake you're on, generally speaking the Black Crappie have spawned while the Whites are in various stages of the spawn. With several warm days in row and the water level on a slow rise some real whoppers are still being caught. Basically three methods are being used; casting a slip bobber with a minnow to gravel banks and slowly reeling it in, best depth 3-6 feet, Casting 3/32 lead heads with Kentucky Green and Ken's Blue Pearl curly tails, best depth 5-6 feet and fishing over brush with minnows or jigs 10-12 feet deep. As the crappie are coming off the beds we'll see a very aggressive bite coming on.

White Bass ...

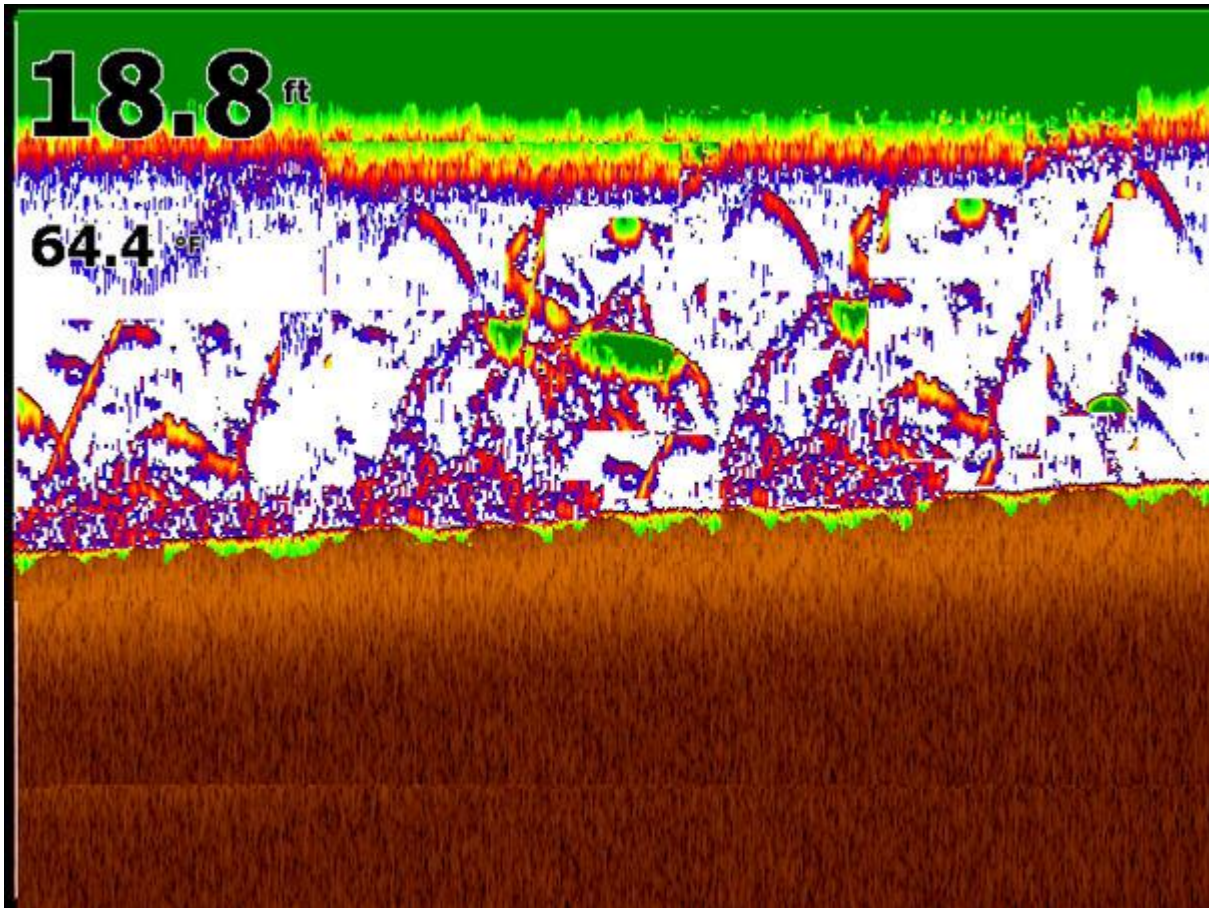
The big Whites are beginning to congregate and suspend at the mouth of the bays. One afternoon we got into them pretty good when we saw them on the Lowrance HDS feeding on shad. Casting a silver **Steel Shad** blade bait, we caught a pretty good mess in a short time before the school got wise. Some were pretty good size too! Look for these schools roaming at the mouth of the bays and make a long cast and bring the blade bait thru the school on a medium retrieve. White bass fishing will improve from here on out.

Red Ear & Bluegill ...

Sharpen your hooks the big ones are beginning to show up. We fished for Bluegill one afternoon for a couple hours and caught a few including several big Red Ear. With bass fishing as good as it is a lot of clients are wanting to stay focused on them but from what I've seen so far it looks like it's going to be a great year for panfish and soon too!

Sonar Tip of the Week

The screen shows a school of bass located on a flat where the creek channel made a bend away from the bank. The bass were aggressively feeding on shad and we used a Steel Shad blade bait to catch several nice fish. With out the aid of our electronics, locating these fish would not have been possible. **Kick'n Bass can help you get more out of your electronics and become a better fisherman. To schedule an on the water fishing trip & instruction email.**



Book Now! & Experience the Thrill of Bass Fishing at Night!



Last year our clients had a blast fishing at night and caught lots of big fish. We will begin our night fishing season in May. The dates available are the 16th, 17th & 18th. The same lures you used during the day are very productive at night and the best spots during the day can be even better at night. There is just something about catching a really big bass at night that really turns a fisherman on. Have the lake all to yourself!

For more information on putting together a night fishing trip send an email rk@kicknbass.net or call 270-703-6133.

**** Special Announcements ****



WOW! Huge Open House This Weekend at "The Cabin Bait and Tackle"

Make plans to attend the open house at The Cabin Bait & Tackle this weekend from 9:00 am to 6 pm on Friday and on Saturday from 9 a.m. to 4:00 p.m. Professional anglers Guido, Dion and Payton Hibdon will be there as well as a number of local pros. The list of Tackle Industry representatives that will be in attendance with product specials is long and there will be several seminars you'll want to surely attend. The Cabin is located between Barkley Dam and I-24 on U.S. 62 in Kuttawa, KY. (270)388-6440.

Kick'n Bass & Area Tackle Shops Team Up for Rod & Reel Combos ...

The cat's out of the bag ... For the past two seasons Kick'n Bass clients have been fishing with Shimano Rod & Reel combos and have raved about they way they cast and handle a good fish. These rods & reels are species specific and have been specially paired for Bluegill & Red Ear, Crappie & Light Bass and Shakey Head fishing for bass. These combos are budget priced and a great value for the angler. Ask for the *Kick'n Bass* Combos at Lake area tackle stores and at Malcolm Creek Resort's on the water tackle shop.

Here's the scoop on the rod & reels ...

Kick'n Bass Bluegill & Red Ear Combo – Shimano Clarus CSS 60LA Rod & 500 Sienna Reel
Kick'n Bass Crappie & Bass Combo – Shimano Clarus CSS 60MA Rod & 1000 Sienna Reel
Kick'n Bass Shakey Head Combo – Shimano Clarus CSS 70MA Rod & 1000 Sienna Reel

Jet-A-Marina Annual Classic Bass Tournament Saturday, April 23rd at Kentucky Dam Marina.

This is an open tournament and the payout is 100% back to 20 % of the field and has a guaranteed 1st place purse of \$5000. This event traditionally has a 300 boat field. On Friday evening April 22nd a cookout and pre-tournament meeting will be held at the Jet-A-Marina dealership in Calvert City. The cookout begins at 5:00 PM and the meeting follows at 6:15. Door prizes will be given away. Register at the pre-tournament meeting or at the launching area at Kentucky Dam Marina on Saturday morning until 5:30 AM. Tournament hours are from 6:00 AM till 3:00 PM. Jet-A-Marina (270) 395-4030.

Tight lines,
RK